



Weekly Macro Market Report

October 1, 2017

U.S. Broad Equity Market Outlook

Intermediate-Term: Bullish

(Will always be Bullish or Bearish)

Our intermediate-term Risk Model (RM) shifted Positive last week for the first time since March. That signal represents the internal improvement in the broad stock market over the past month. Combined with positive price action in the smaller and broad market averages, our outlook has improved markedly in the short to intermediate-term. This development has put a halt to any more shorting or hedging at this point, except in special situations. It also has us more open to add long exposure in our favored areas of the market, e.g., technology, large-cap growth, health care, materials, industrials, financials and housing. We are still loathe to buy breakouts and would look to target buys on pullbacks into support in our favored areas of the market. That said, nothing material has changed in the longer-term, however. Given the extended status of some of the Risk Model components, the current Buy signal is of a higher-risk variety than normal. As such, we will be quicker to take some profits on our trades and treat some of them as a “swing” variety, i.e., shorter-term. Near-term market sentiment is now back near excessive bullishness again. Meanwhile, longer-term sentiment measures are also at excessively bullish levels and could contribute to a top of significant magnitude relatively soon. And FYI, yes, following this potential extension of the recent rally, we continue to think we are nearing the best shorting opportunity in years.

- Favored areas of the domestic market are still large-cap growth, technology, health care (non-biotech/pharma), materials, industrials, utilities, housing and financials. The former laggards, e.g., value, small-caps, high-beta etc. are even looking favorable from a price perspective now, though. Meanwhile, high yield bonds, consumer staples and discretionary stocks are “sell into strength” candidates.
- Internationally, many markets continue to present attractive-looking opportunities. In EM, the BRICS (Brazil, Russia, India and China) look to offer potentially substantial upside in the longer-term, though, they may need to consolidate in the near-term. Smaller EM countries, e.g., Taiwan, Thailand, The Philippines, Indonesia, South Africa, etc. may be setting up major breakouts and offer the best long-term potential in global equities, in our view. European markets are extending bounces off the support we’ve been mentioning now and are now near short-term resistance levels. Germany, in particular, has put in a nice bounce as laid out in recent posts.
- In other markets, the 10-year Treasury Yield has reclaimed its key “regime-defining” level near 2.20%. Commodities, in general, are still mostly range-bound and mostly in the “sell rallies into resistance” category, including crude oil. Industrial metals, e.g., copper, are testing near-term support. Precious metals are still range-bound, in the intermediate-term, and may be testing near-term support. The Dollar Index has reclaimed important multi-year support ~92.50, while the Euro has fallen back below the major resistance we’ve been targeting. The Canadian Dollar is testing key support while Bitcoin is hitting near-term resistance.

Bottom Line: The Risk Model Buy signal and continued positive developments this week put serious stock market danger on hold. Further upside in the near-term is possible. We will cover shorts and add long exposure on pullbacks in favored areas (e.g., technology, large-cap growth, health care, materials, industrials, utilities, housing, financials) – and take some profits into rips higher, like now.

Short-Term: Neutral

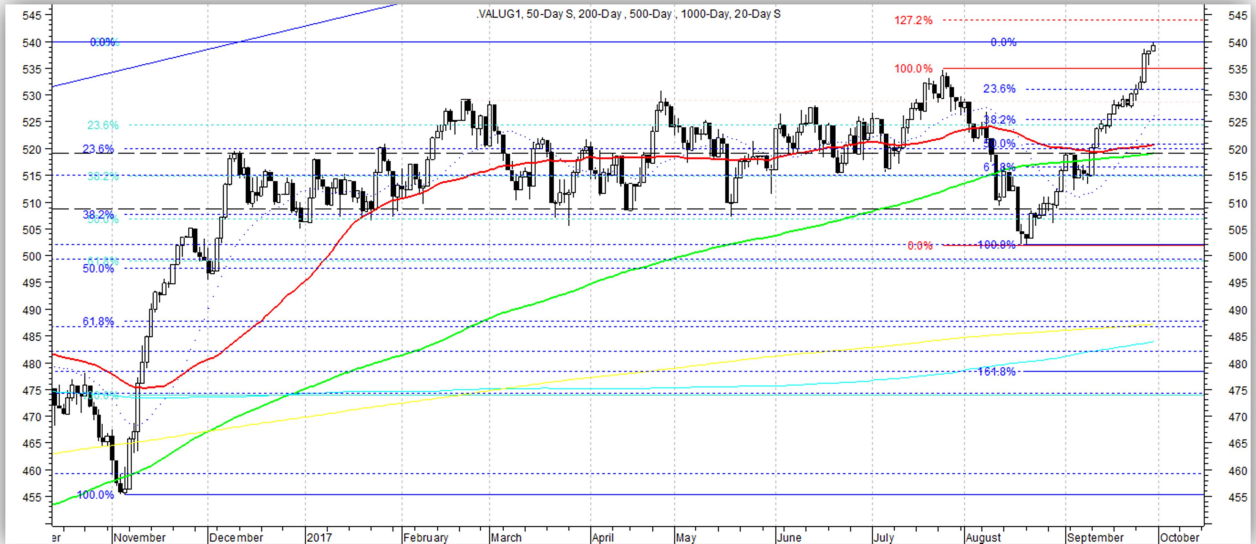
(Will be Bullish, Bearish or [often] neutral – used more for trade entry/exit timing purposes)

Close to turning “Bearish”. Last week’s continued bounce has stock indices extended and sentiment approaching frothy status in the near-term. Profits in swing long trades are advised, though, we are forgoing shorts at this point given the Risk Model Buy signal. We are not be chasing breakouts. We still recommend reducing long exposure in poor performing areas into this bounce. Large-cap growth, technology, health care, materials, industrials, housing, financials and utilities can still be bought into pullbacks into support. Utilities are testing support levels now. Short-term sentiment is getting heavily bullish again. Internationally, European markets (e.g., STOXX 50, Germany) are near resistance (profit-taking) levels now. Russia and Brazil are hitting resistance after recent breakouts, while India is testing support. Smaller EM’s (e.g., Taiwan, Thailand, South Africa, Indonesia, The Philippines) may be offering the best opportunities in the global equity market at this time. The 10-year yield has reclaimed its key ~2.20% level again. The U.S. Dollar Index is has reclaimed major support now ~92.50 while the Euro has lost major support. Lastly, copper is testing support now and the Canadian Dollar is nearing support.

U.S. Equity Index Charts

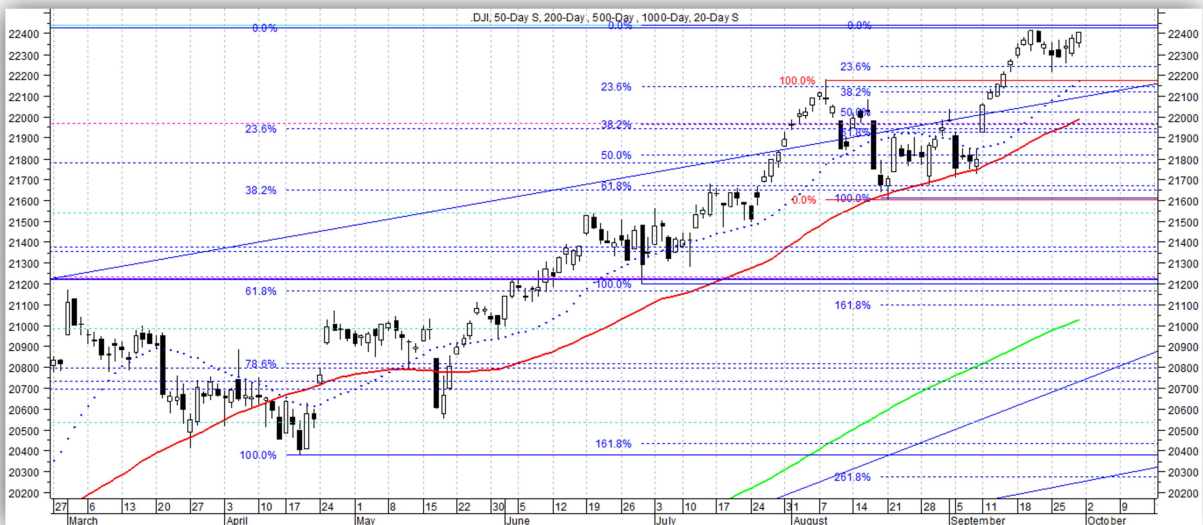
Value Line Geometric Composite (tracks "median" stock)

Bullish. Risk Model Buy signal, internal improvement over past month and positive action has shifted outlook on this index to bullish, for now, and forestalled expected intermediate-term weakness. Getting extended in near-term, though. Key support levels: 531, 525, 520, 516, 508, 498, 487, 474. Key resistance levels: 540.



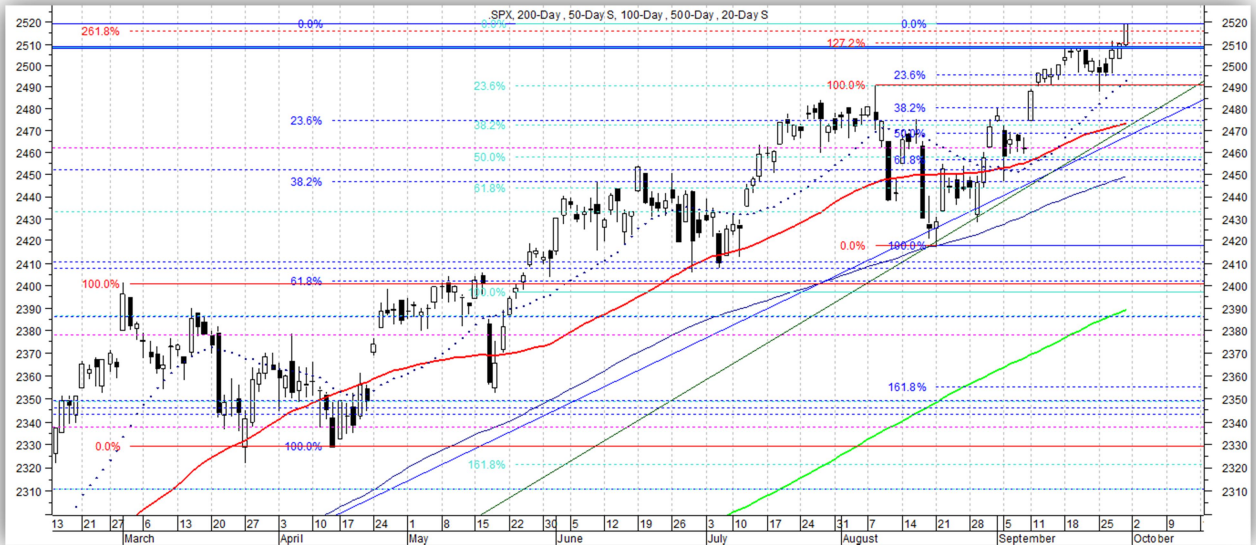
Dow Jones Industrial Average

Bullish. Prices continue to make higher highs and lows. Key support levels: 22,240, 22,120, 21,960, 21,650, 21,210, 21,025, 20,400. Key resistance levels: 22,430, 22,550.



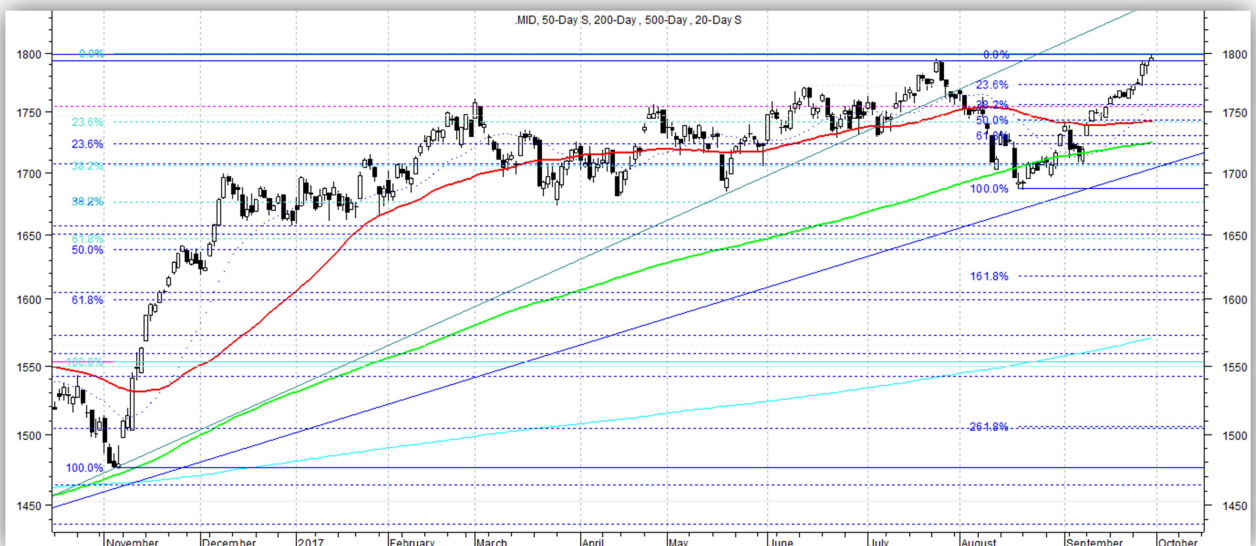
S&P 500

Bullish. Got further extension to new highs, as expected. Getting extended here in the near-term, though. Key support levels: 2495, 2480, 2475, 2455, 2446, 2410, 2385, 2345, 2310, 2275. Key resistance levels: 2520.



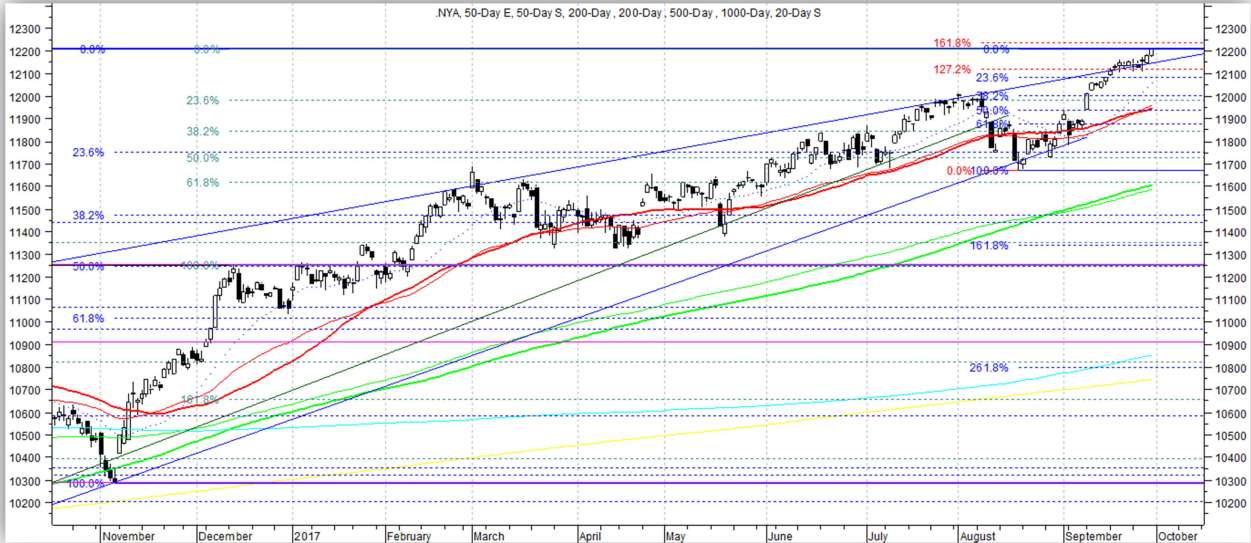
S&P 400 Mid-Cap

Bullish. Risk Model Buy signal, internal improvement over past month and positive action has shifted outlook on this index to bullish, for now, and forestalled expected intermediate-term weakness. Getting extended in near-term, though. Key support levels: 1771, 1753, 1741, 1730, 1708, 1650, 1600. Key resistance levels: 1800.



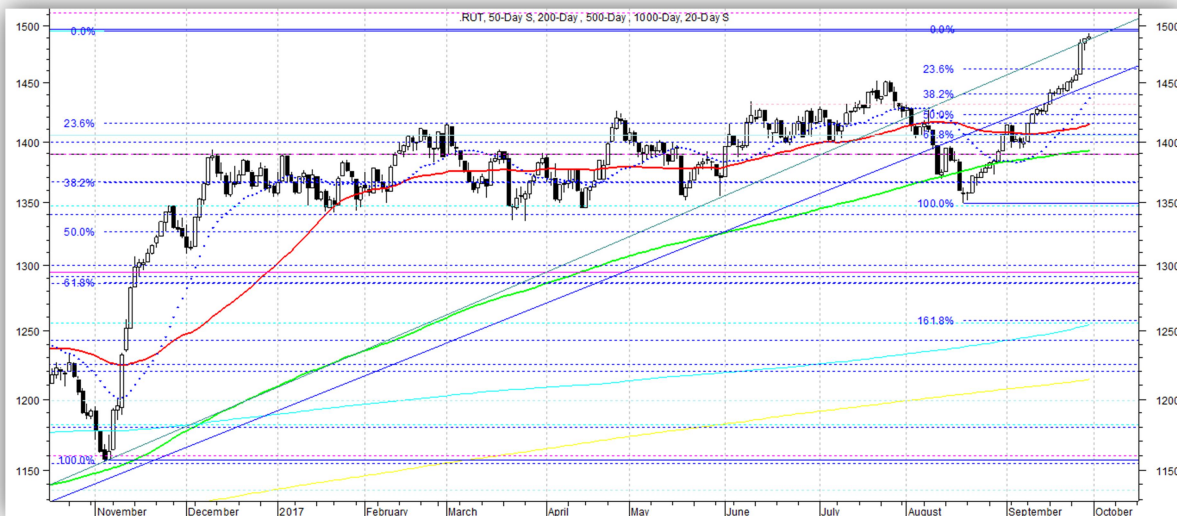
NYSE Composite

Bullish. Got further extension to new highs, as expected. Getting extended here in the near-term, though. Key support levels: 12,080, 12,000, 11,870, 11,740, 11,450, 11,330, 11,250. Key resistance levels: 12,240.



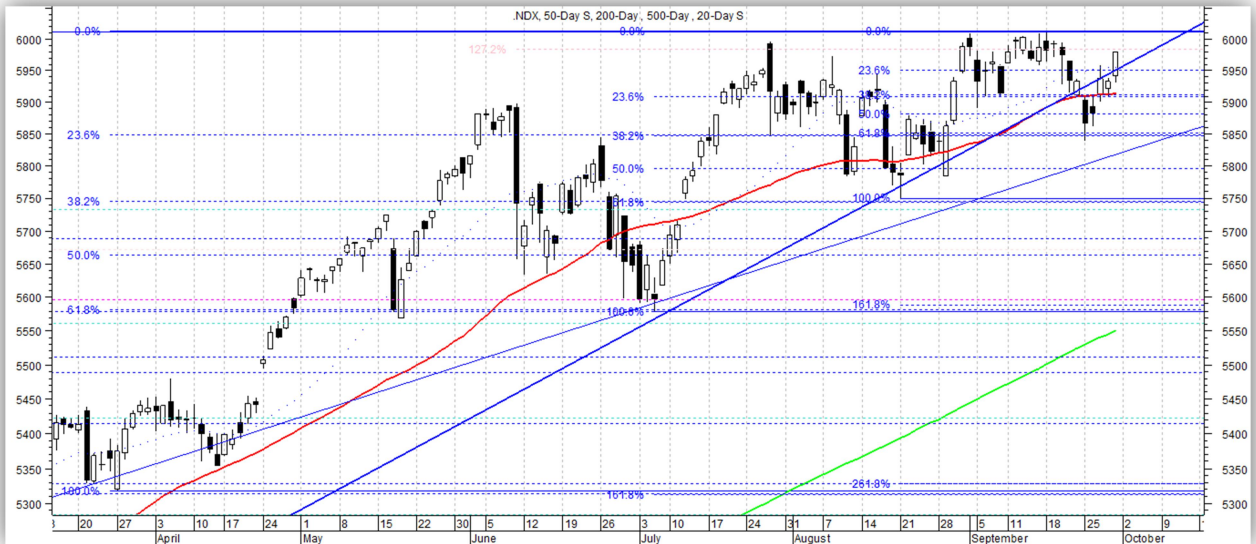
Russell 2000

Bullish. Risk Model Buy signal, internal improvement over past month and positive action has shifted outlook on this index to bullish, for now, and forestalled expected intermediate-term weakness. Getting extended in near-term, though. Key support levels: 1461, 1440, 1415, 1405, 1368, 1288. Key Resistance levels: 1495, 1512.



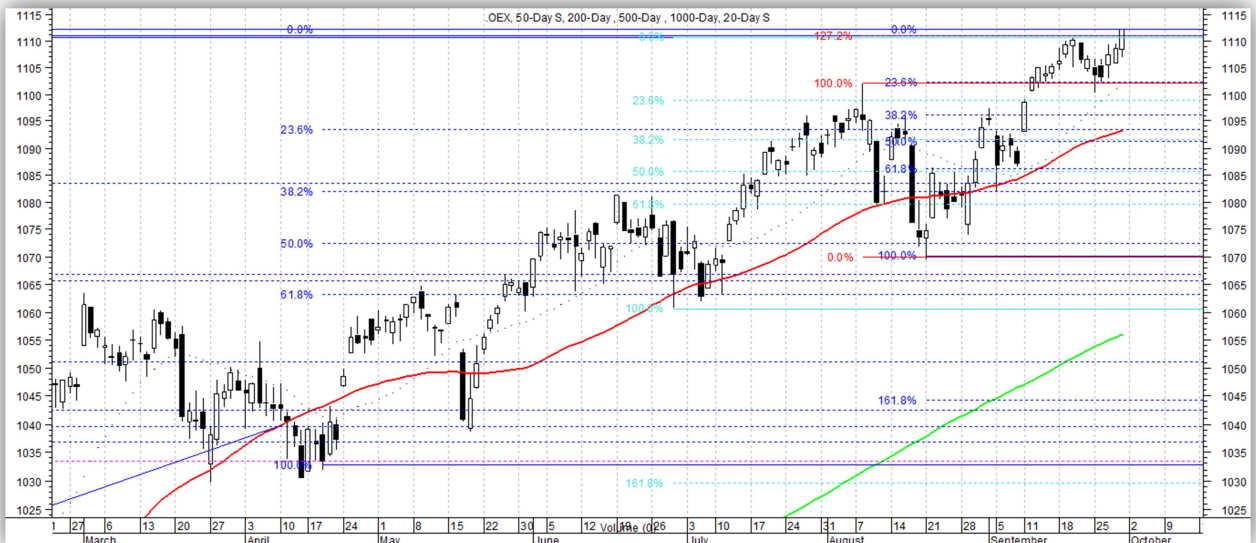
Nasdaq 100

Bullish. Bounced off of support, as expected. Still one of our favored areas. Looking for new highs and at least one more extension higher. Key support levels: 5910, 5840, 5740, 5670, 5575, 5480, 5400, 5325. Key resistance levels: 6010, 6110.



S&P 100

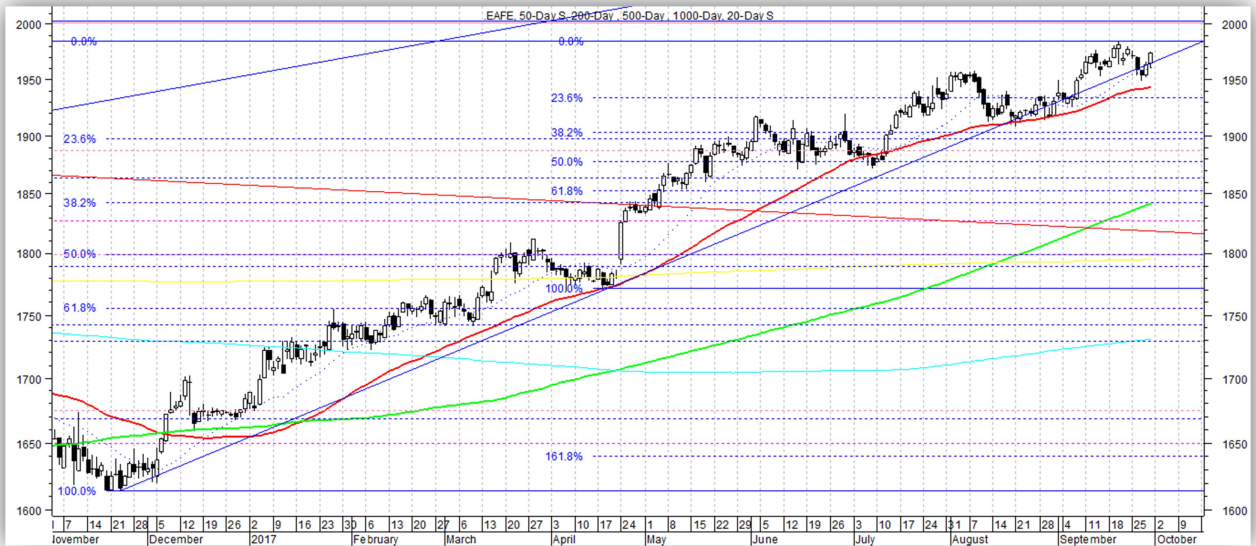
Bullish. Got further extension to new highs, as expected. Getting extended here in the near-term, though. Key support levels: 1120, 1096, 1093, 1086, 1082, 1065, 1033, 1010, 995. Key resistance levels: 1112.



International Indices

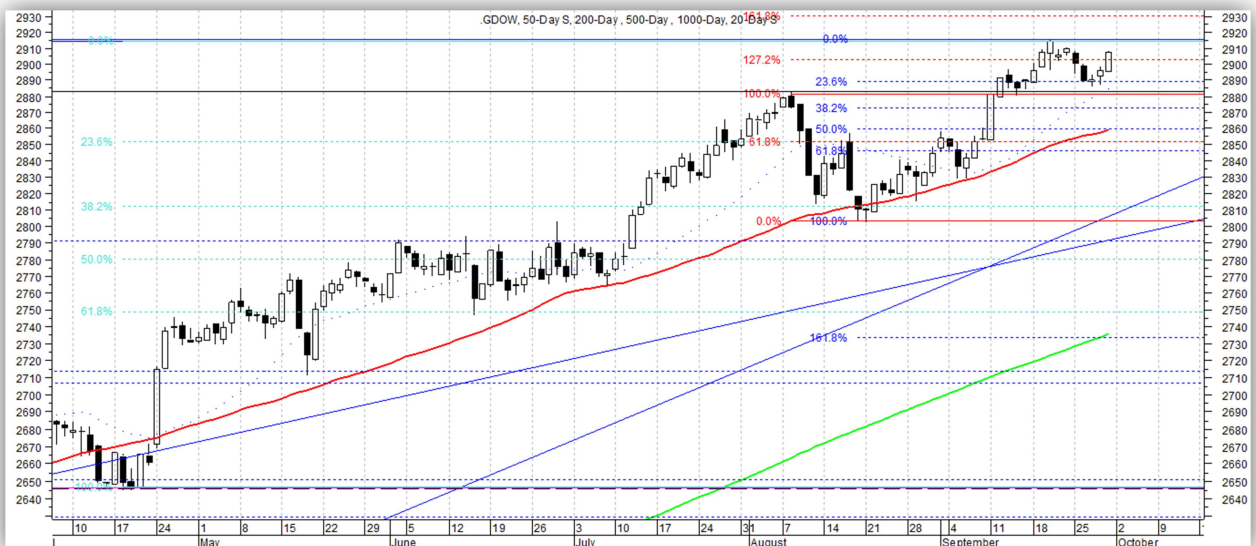
MSCI EAFE

Bullish. Higher highs and higher lows still. More upside possible, but approaching key 2014 peak. Key support levels: 1935, 1900, 1850, 1800, 1770, 1740. Key resistance levels: 2002.



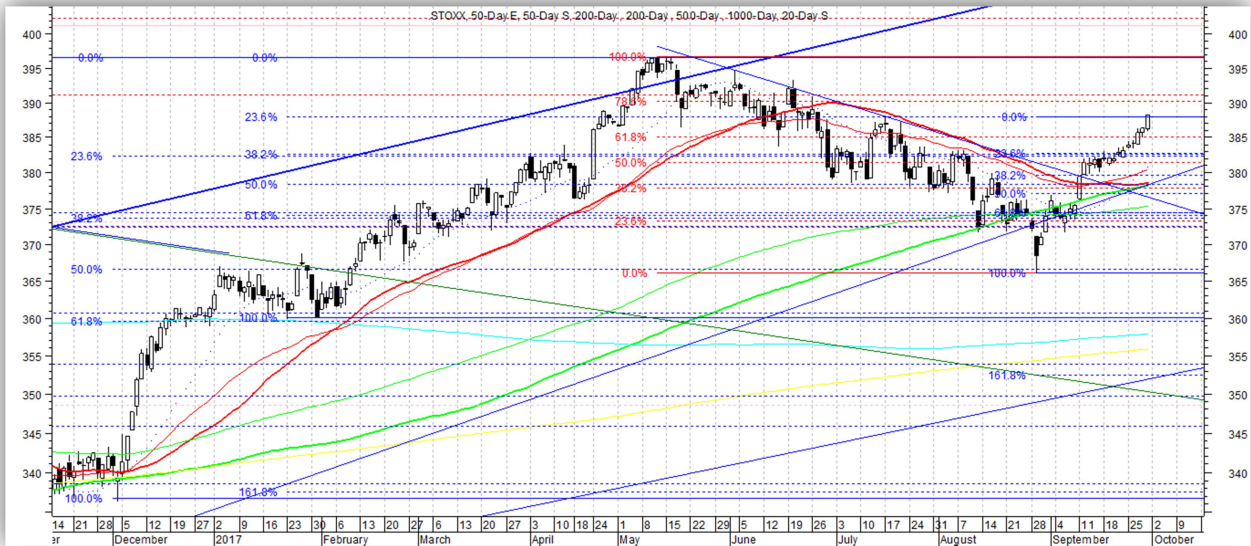
Global Dow

Bullish. Broke S/T resistance, setting new ATH's. Looking for a bit more upside now prior to more serious correction. Key support levels: 2882, 2872, 2860, 2846, 2820, 2790, 2710, 2650. Key resistance levels: 2913, 2931.



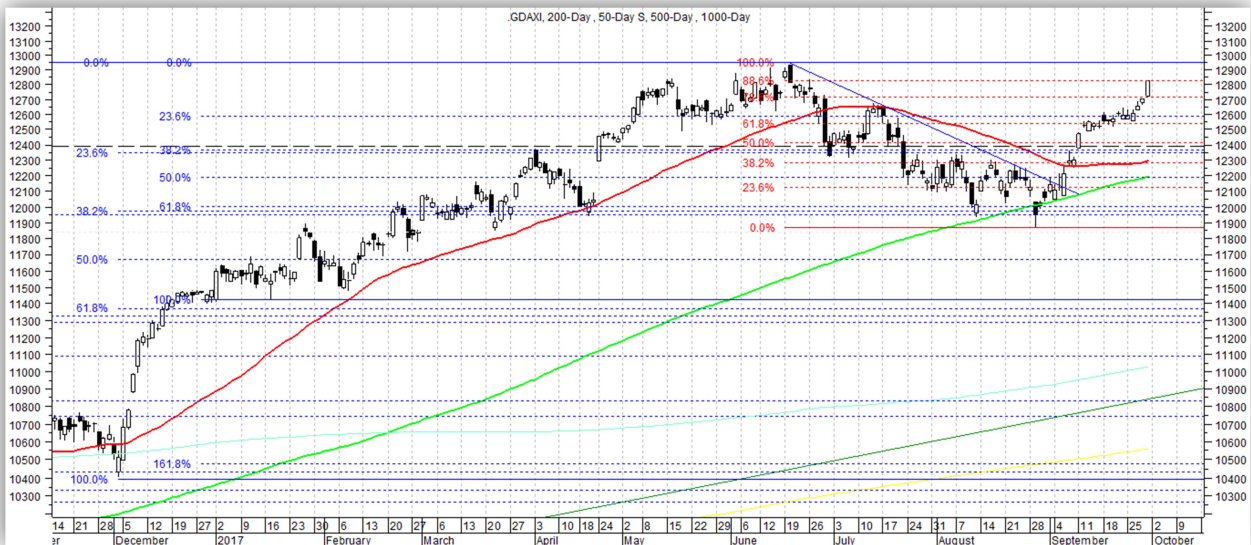
STOXX Europe 600

Bullish. Getting further extension of expected August bounce off of key support. Extended in near-term. Took some profits and riding w/ rest to see if bounce has potential for new highs. Key support levels: 383, 379, 374, 360, 337. Key resistance levels: 391, 396.50, 400, 415.



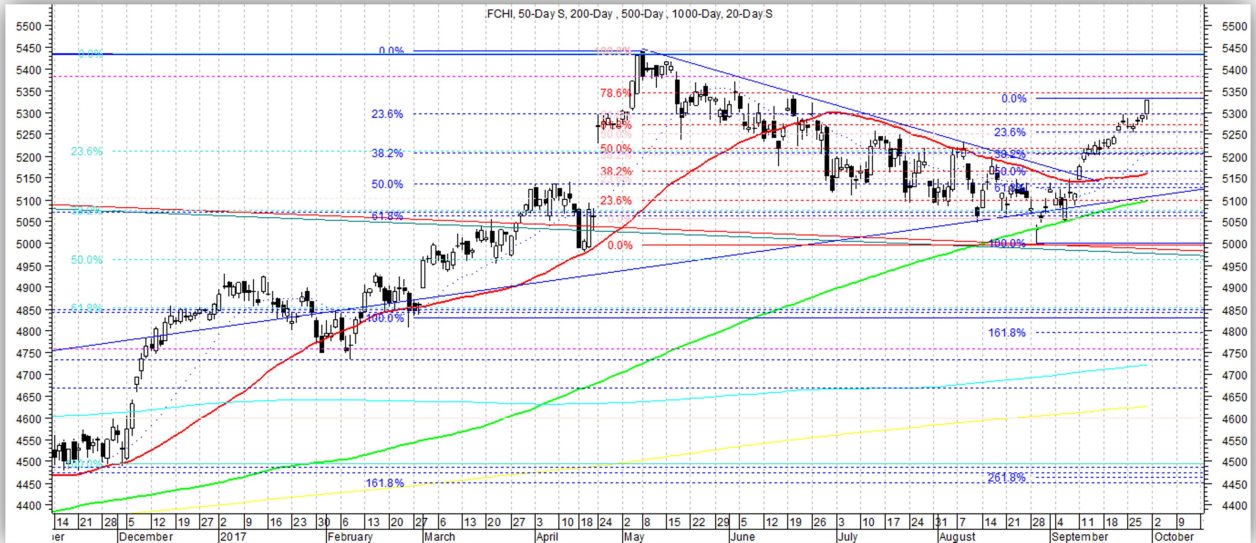
German DAX

Bullish. Getting further extension of expected August bounce off of key support. Extended in near-term. Took some profits and riding w/ rest as bounce has potential for new highs. Key support levels: 12,590, 12,380, 12, 200, 11,950 , 11,300. Key resistance levels: 12,920.



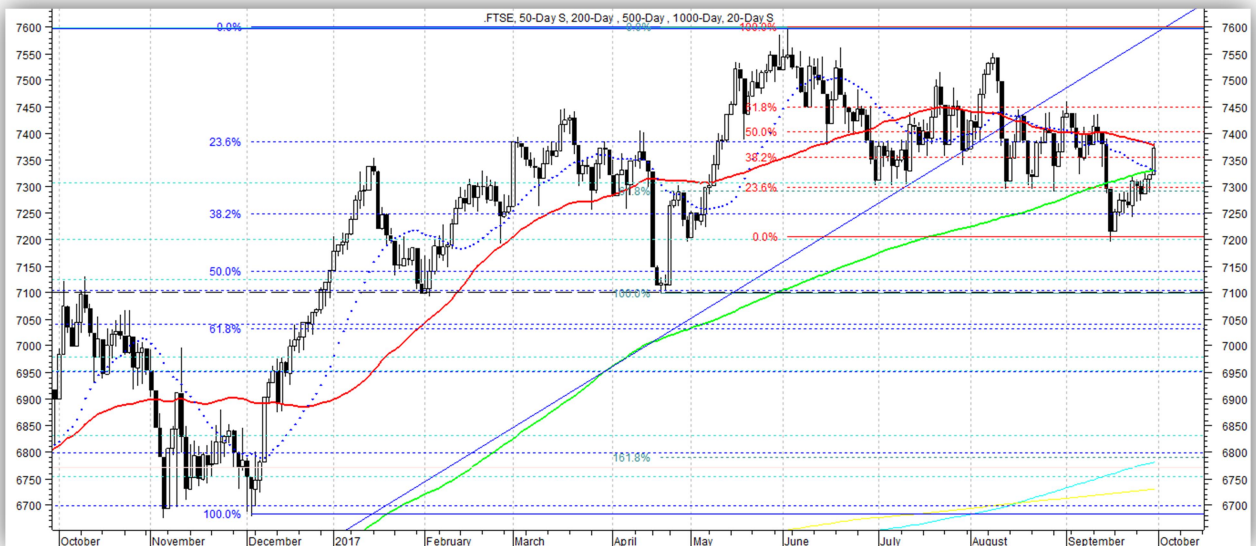
France CAC-40

Bullish. Getting further extension of expected August bounce off of key support. Extended in near-term. Would take some profits and ride w/ rest to see if bounce has potential for new highs. Key support levels: 5250, 5210, 5130, 5000, 4850. Key resistance levels: 5340, 5440.



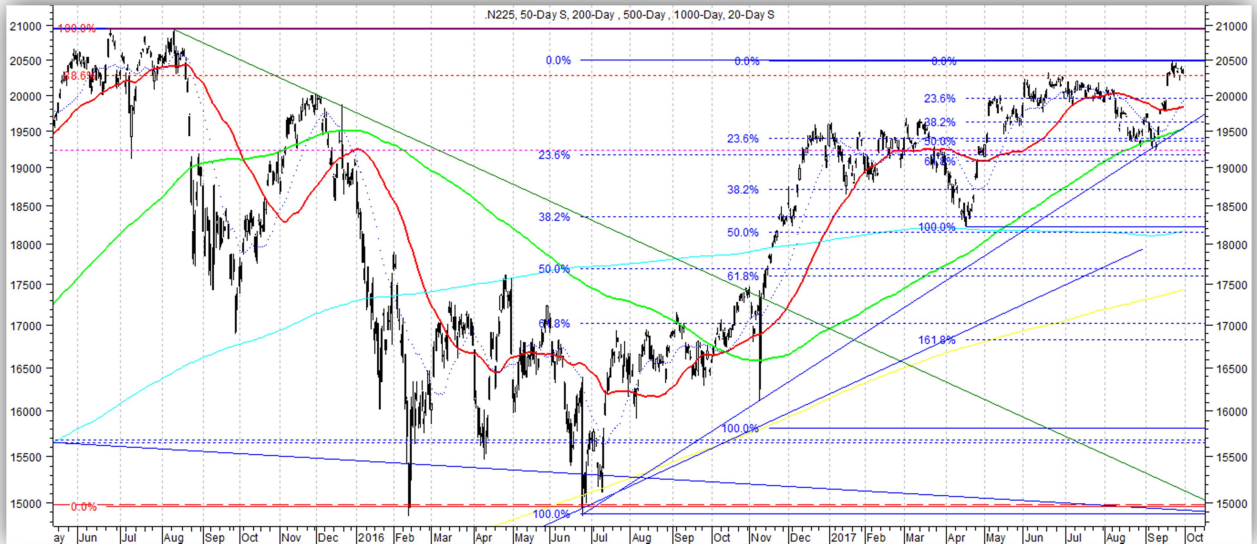
UK FTSE-100

Bearish. Testing near-term resistance. Multi-decade support below at December breakout levels ~7100. Key support levels: 7290, 7200, 7100, 6980-7000. Key resistance levels: 7380, 7450, 7550-7600.



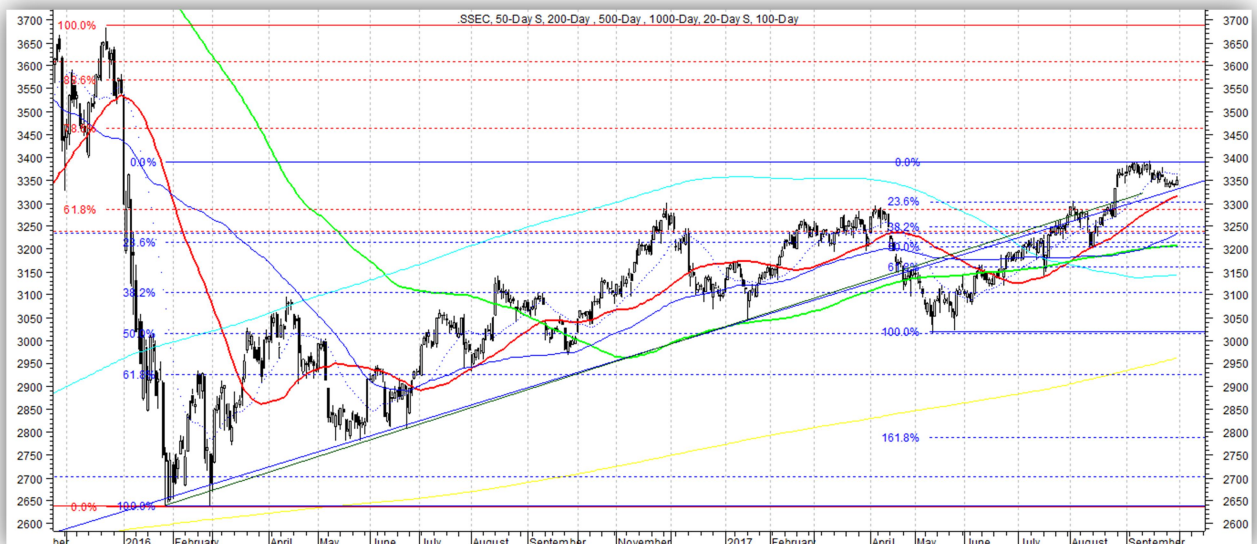
Japan Nikkei 225

Bullish, longer-term. Hitting new multi-year highs. Key support levels: 19,950, 19,610, 19,390, 19,000, 18,710, 18,210. Key resistance levels: 20,500, 21,000.



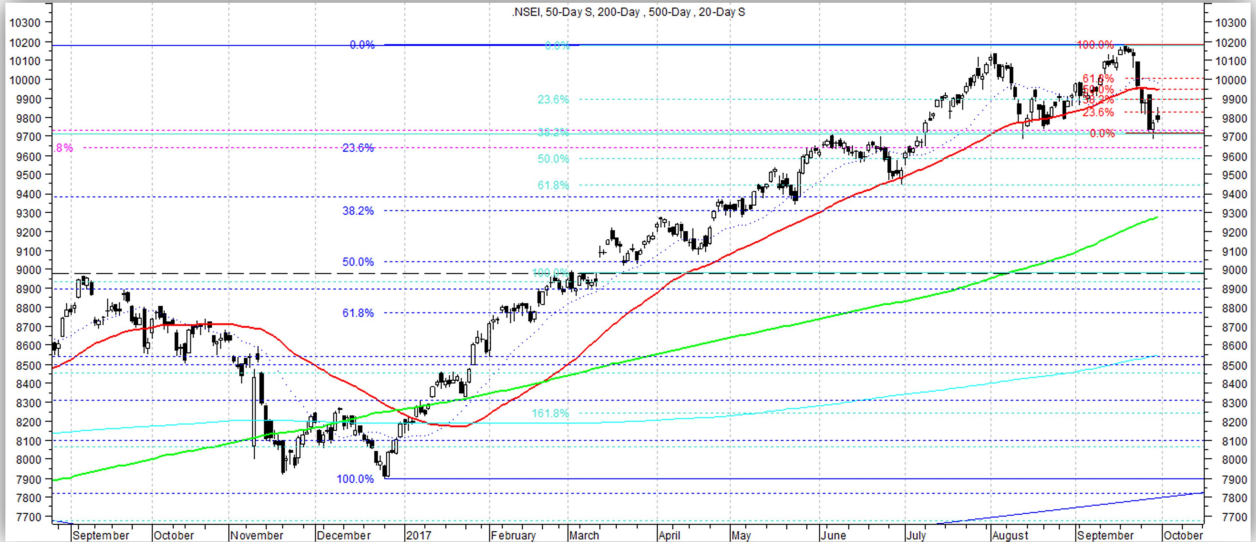
China Shanghai Composite

Bullish. Breakout above November & April highs opened up 5-10% upside potential in near-term. Key support levels: 3300, 3240, 3170, 3140, 3070, 2970, 2890. Key resistance levels: 3390, 3460, 3570, 3660.



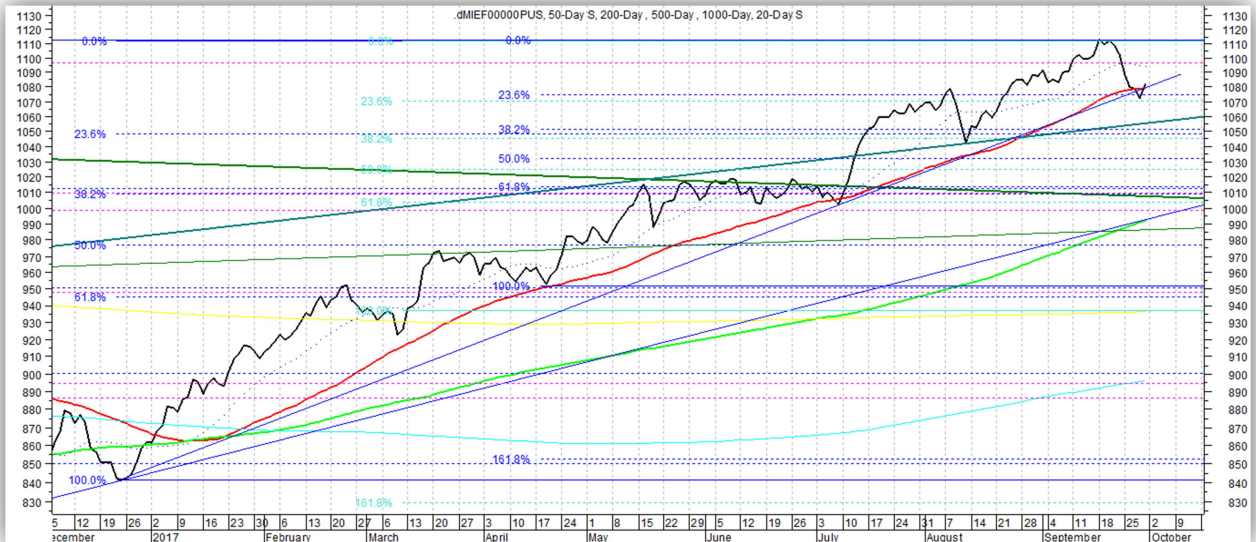
India Nifty 50

Bullish. Testing key near-term support now. Key support levels: 9700, 9600, 9440, 9280, 8990, 8790, 8580, 7900. Key resistance levels: 10,190.



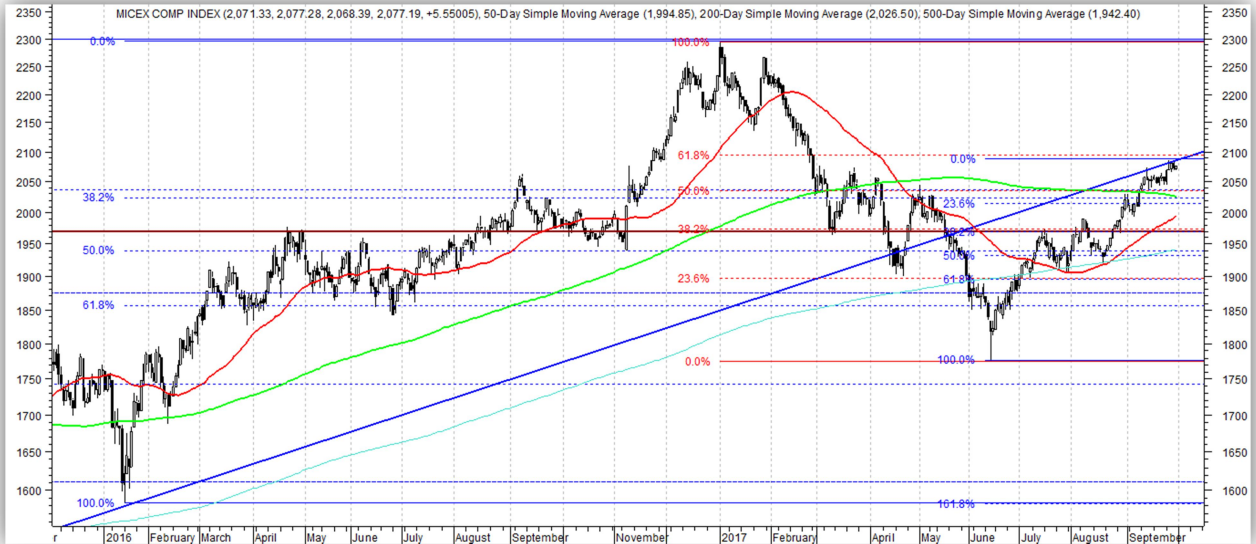
MSCI Emerging Markets

Bullish. Testing near-term support now. Key support levels: 1070, 1045, 1000, 990, 960, 935. Key resistance levels: 1111.



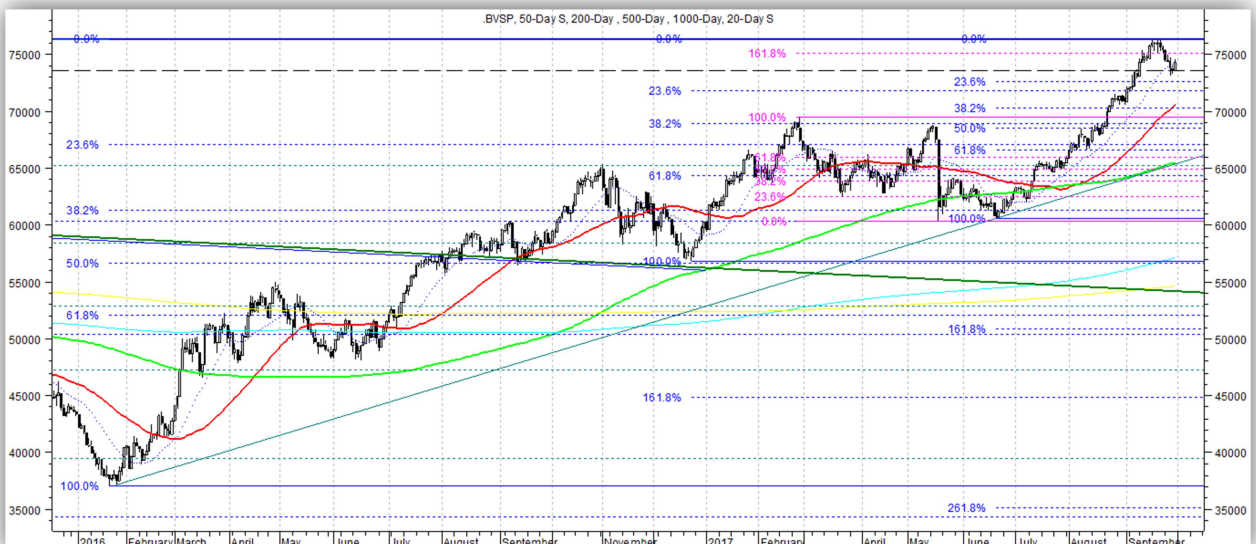
Russia MICEX

Bullish. Hitting near-term resistance now, but longer-term prospects brighter again. Key support levels: 2035, 2015, 1970, 1930, 1900, 1870, 1775, 1741, 1610. Key resistance levels: 2095, 2290.



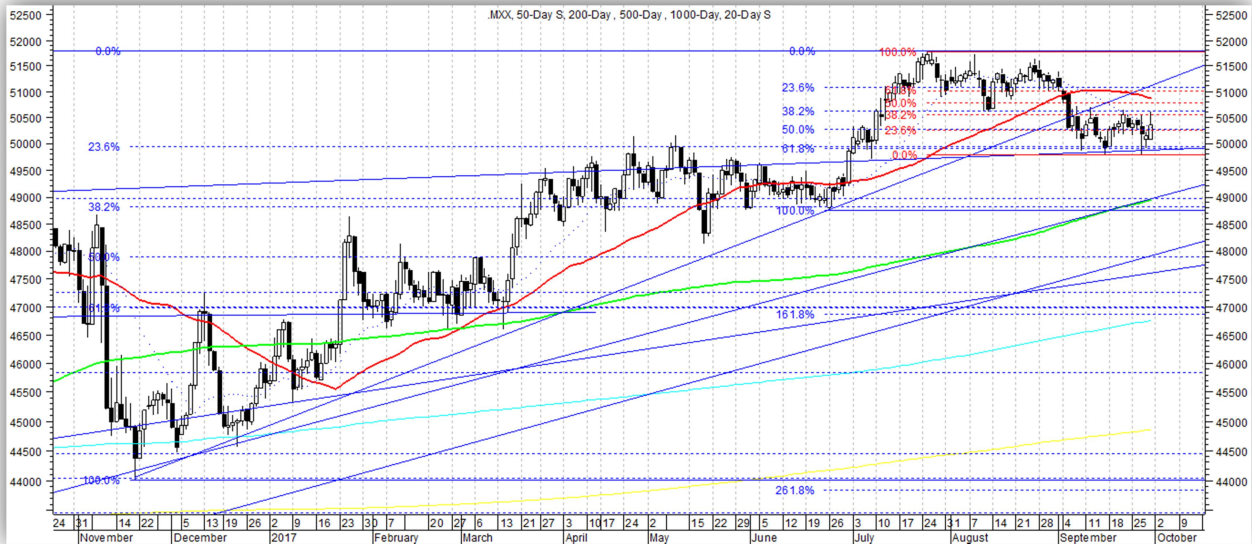
Brazil Bovespa

Bullish. Pulling back to test former all-time highs ~73,400 now. Further pullback, consolidation would be ideal before up-leg to durable new all-time highs. Key support levels: 72,500, 70,000, 67,000, 60,500, 57,000. Key resistance levels: 76,250.



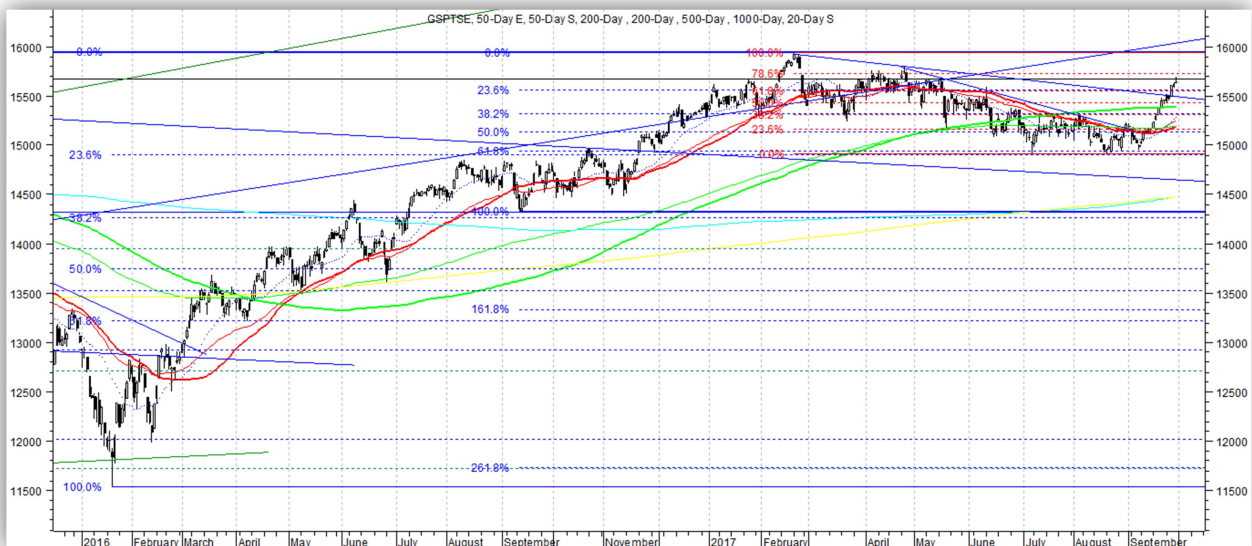
Mexico IPC

Bullish. Testing near-term support ~49,900 again. Key support levels: 49,900, 48,750, 47,900, 46,400, 44,000, 43,500. Key resistance levels: 50,510, 51,000, 51,700.



Canada TSX

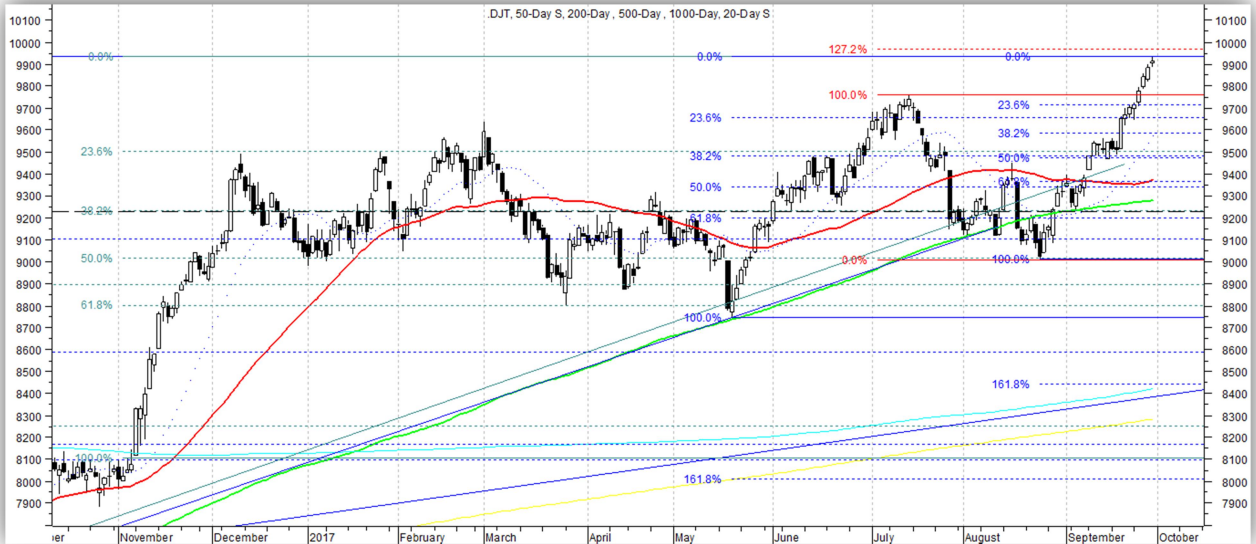
Bullish. Strong bounce off of Fibonacci support has now broken some key resistance. A bit extended in S/T. Key support levels: 15,500, 15,300, 15,150, 14,900, 14,300. Key resistance levels: 15,730, 15,940.



U.S. Sector & Sector/Industry ETF Charts

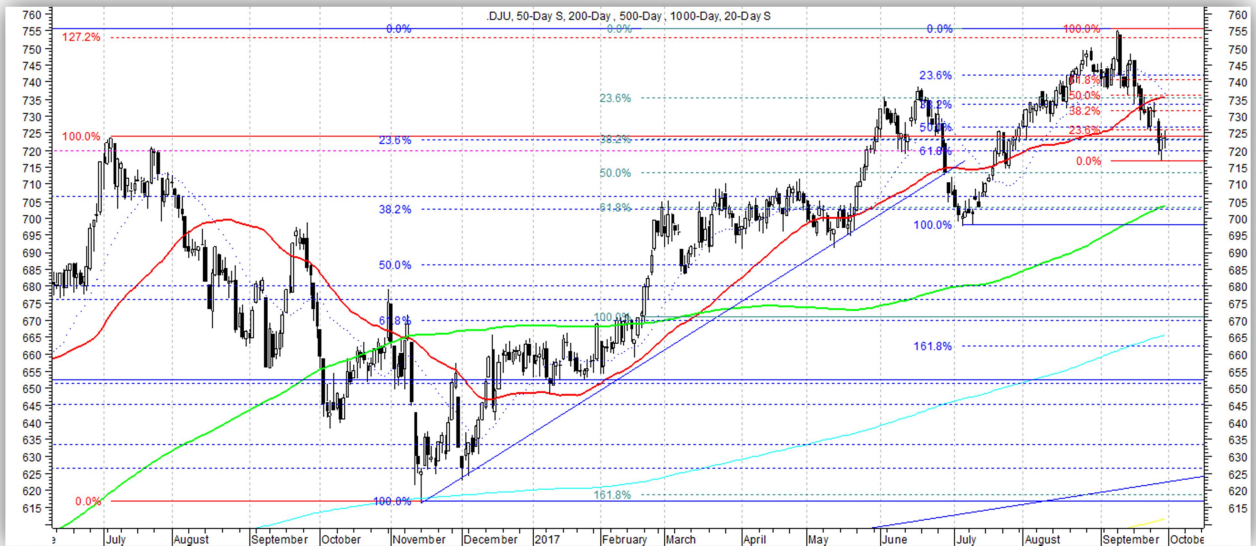
Dow Jones Transportation Average

Bullish. New all-time highs open up further upside. Extended in near-term. Key support levels: 9710, 9580, 9470, 9350, 9230, 9000, 8930, 8750, 8400, 8000. Key resistance levels: 9970.



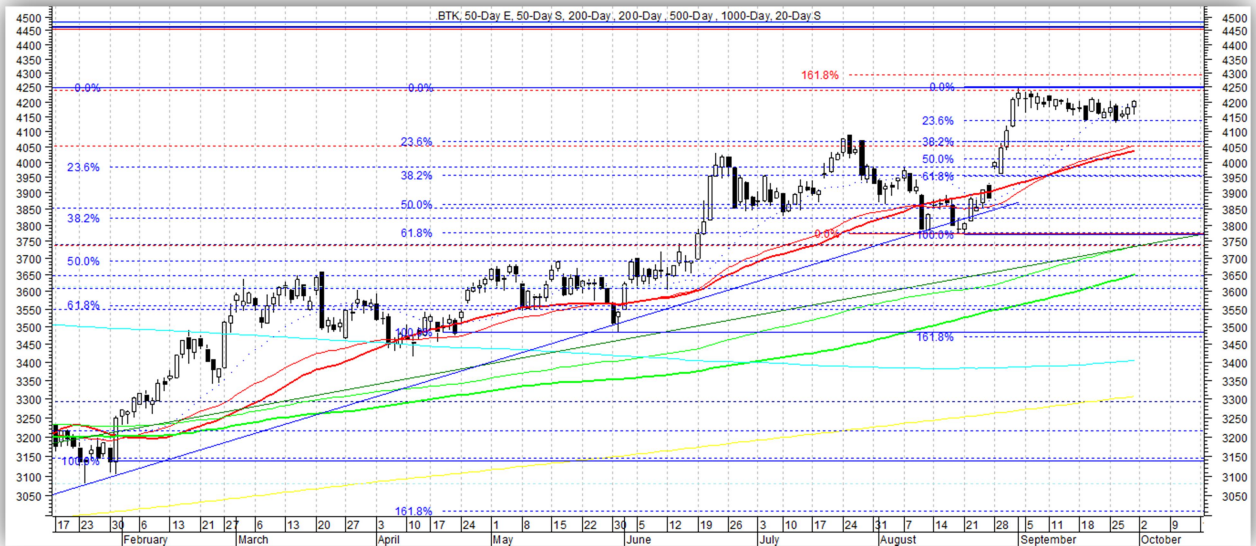
Dow Jones Utility Average

Bullish. Pulling back from ATH's; testing key support. Key support levels: 720-723, 702, 670. Key resistance levels: 732, 740, 755.



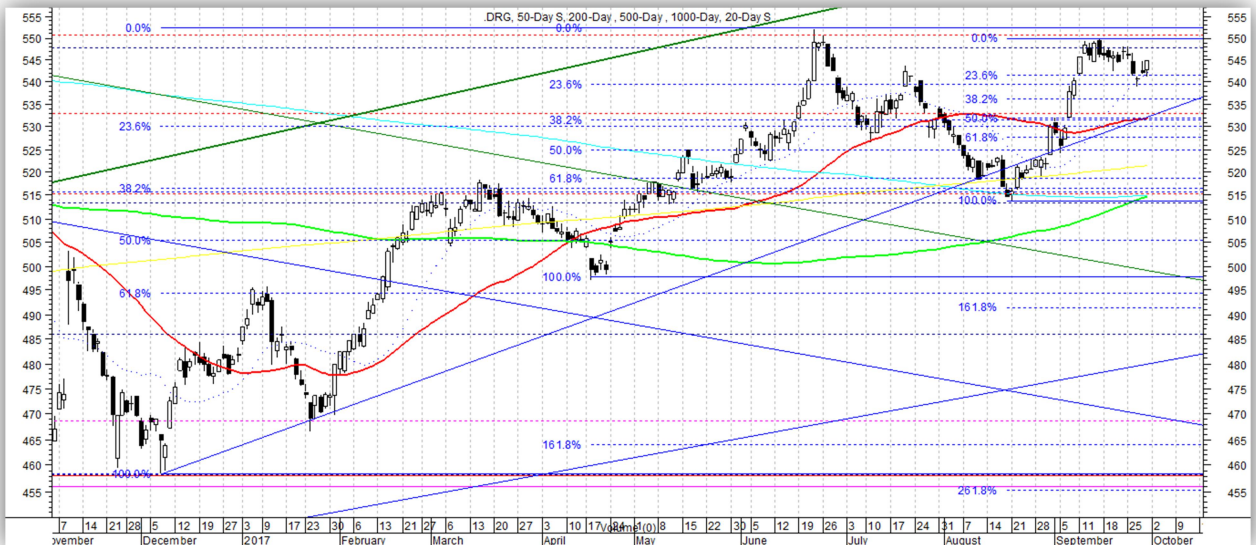
NYSE Biotech Index-BTK

Bullish, near-term; bearish, longer-term. Consolidating recent new high still. Potential short-term bull flag. Limited upside in longer-term due to lower highs after potential bubble top in 2015. Key support levels: 4140, 4070, 3960, 3720, 3680, 3575, 3480, 3350, 3140. Key resistance levels: 4250, 4460.



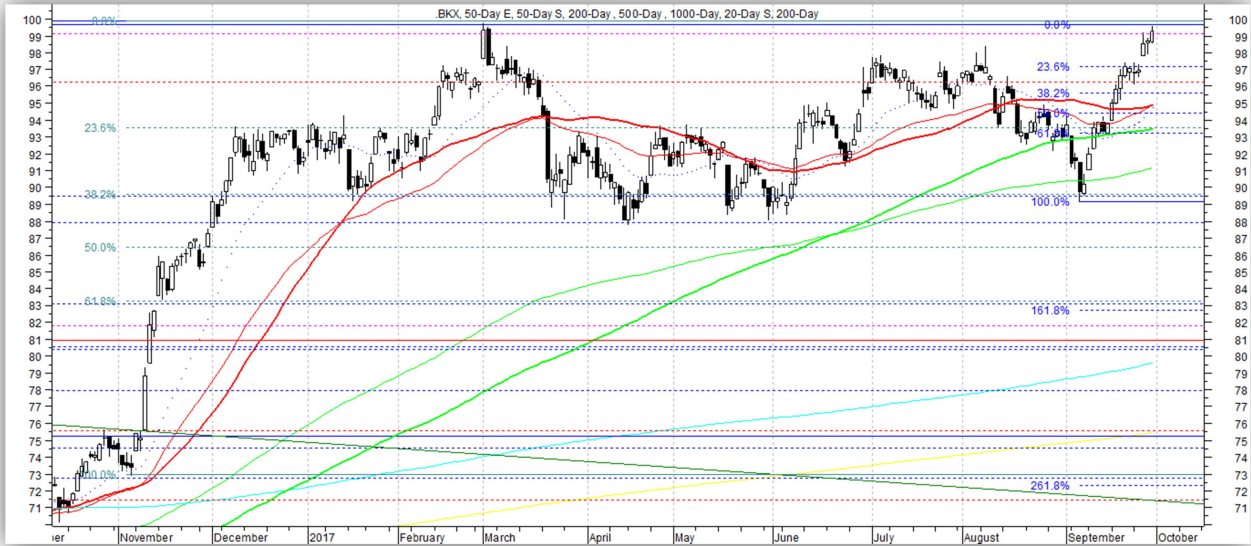
NYSE Pharma Index-DRG

Bullish near-term; bearish, intermediate-term. Got bounce off solid support ~515...but upside perhaps limited due to lower highs on the longer-term chart after topping in 2015. Potential short-term bull flag. Key support levels: 540, 531, 515, 495, 481, 458. Key resistance levels: 550, 607.



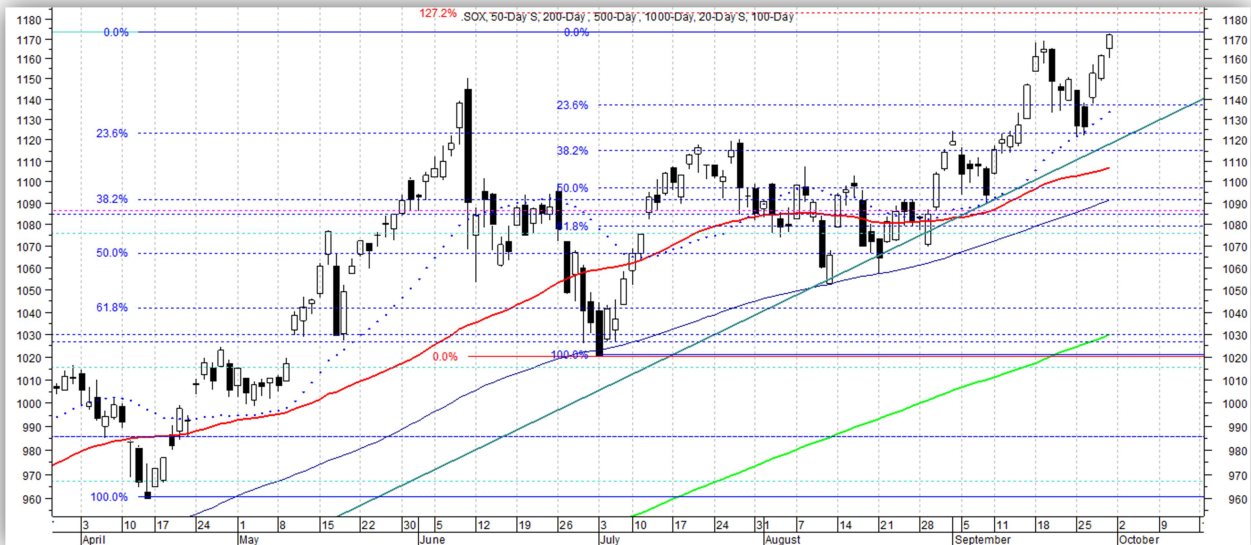
KBW Bank Index-BKX

Bullish. Testing former highs now following bounce from “must-hold” levels. Key support levels: 97.10, 95.50, 93, 89.50, 87.80, 86, 81. Key resistance levels: 99-100.



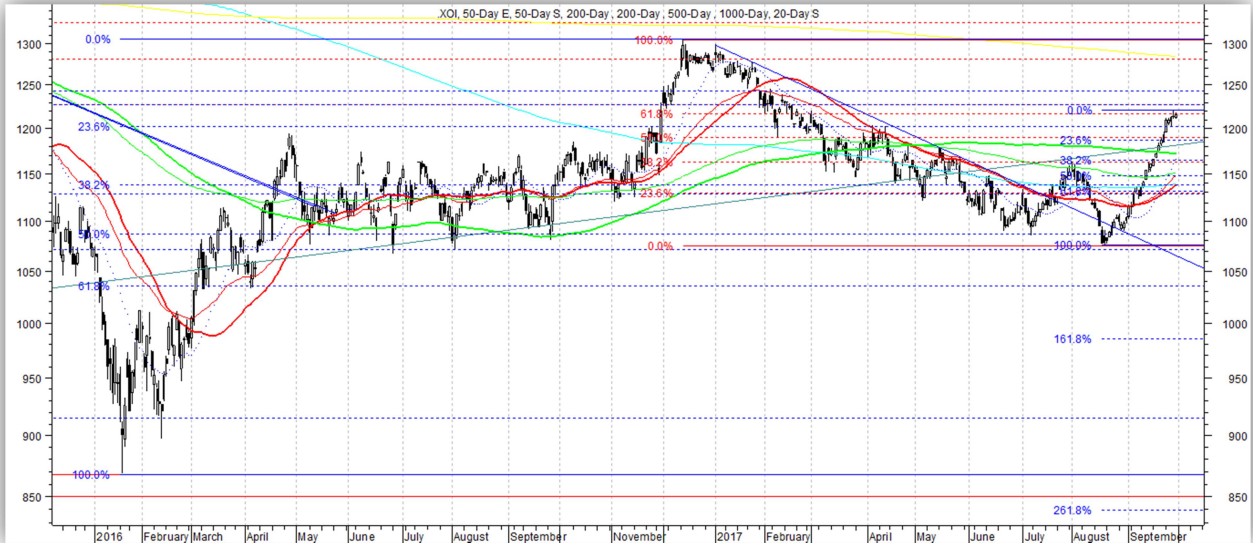
PHLX Semiconductor Index-SOX

Bullish. Back to 52-week highs. Bounced off test of breakout point as expected. Key support levels: 1136, 1123, 1115, 1091, 1080, 1042, 1020, 1010, 960. Key resistance levels: 1174, 1183.



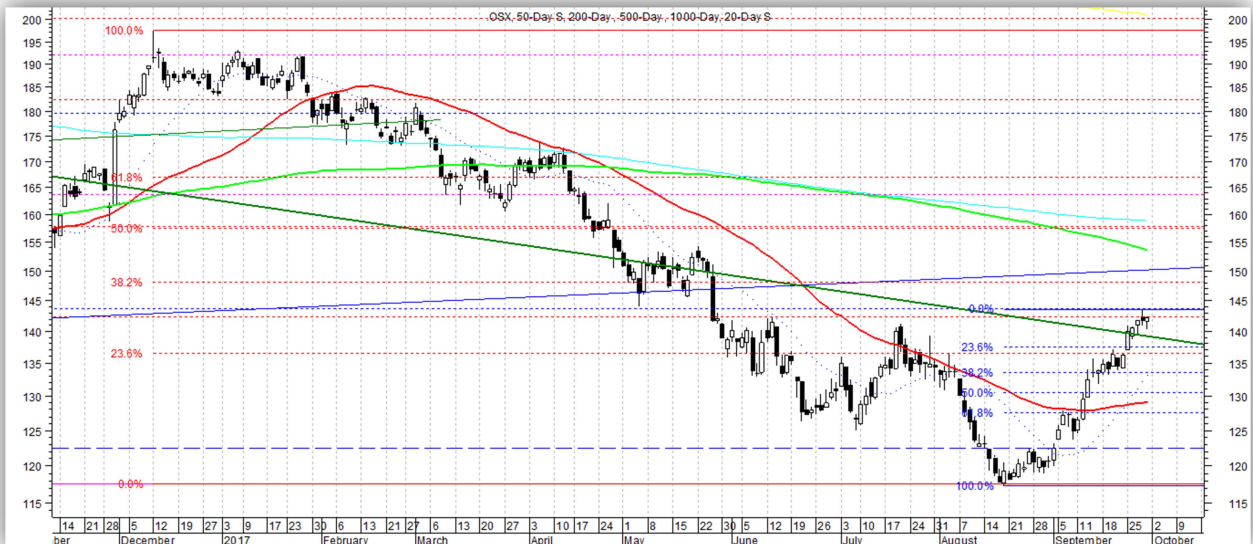
NYSE Oil & Gas Index-XOI

Bearish, longer-term; bullish near-term. Strong bounce off of 52-week low has broken multiple layers of resistance, setting up better longer-term potential now. Extended in near-term and testing resistance at the moment, though. Key support levels: 1188, 1162, 1130, 1072. Key resistance levels: 1219, 1280-1300.



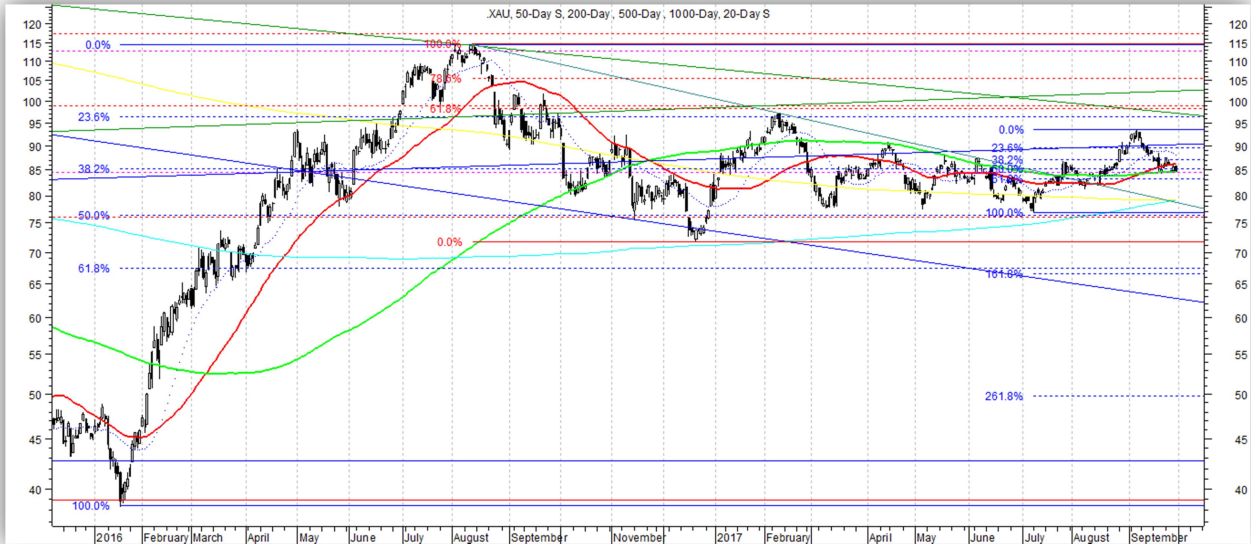
PHLX Oil Services Index-OSX

Bearish, longer-term; bullish near-term. Bounce off of 52-week low continues. Key support levels: 137, 133, 127.50, 125, 122, 117.50, 104, 97. Key resistance levels: 142, 148, 157, 167, 182, 195, 217.



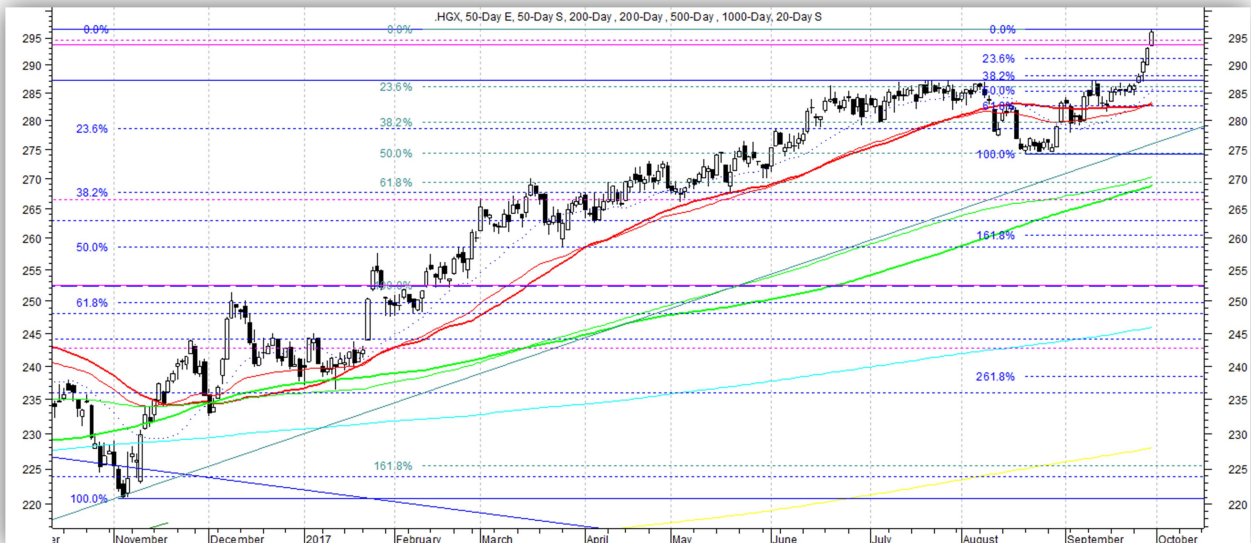
PHLX Gold/Silver Index-XAU

Range-bound, intermediate-term. Testing short-term support now. Key support levels: 85, 81.90, 77.00, 71.50, 67. Key resistance levels: 93, 97-99, 105, 114.



PHLX Housing Index-HGX

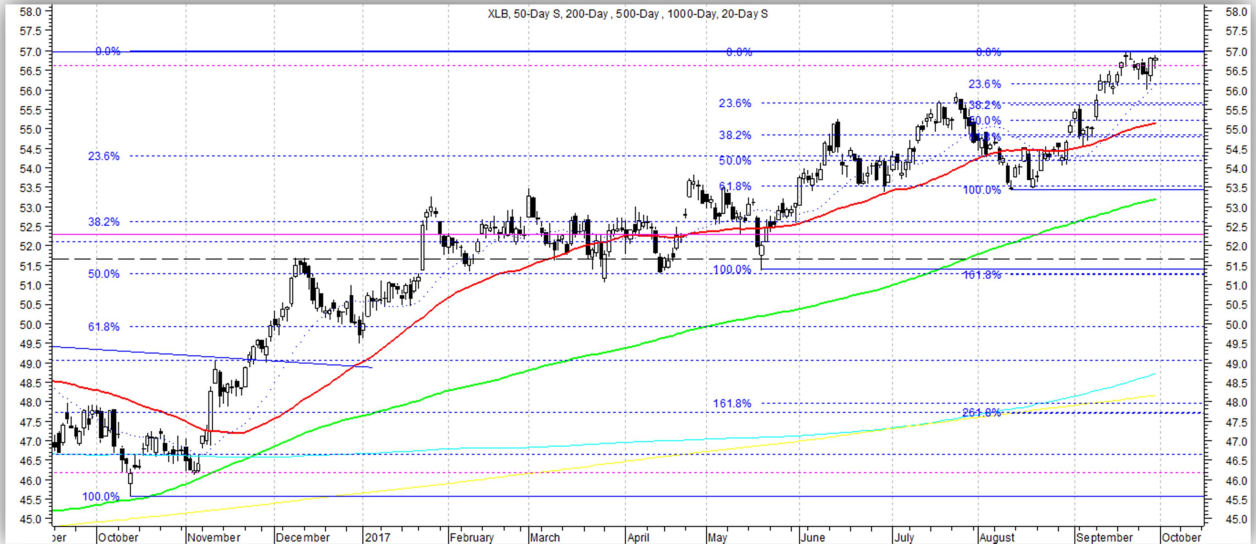
Bullish. New 52-week highs, and threatening to take out 2005's All-Time Highs. Key support levels: 291, 288, 283, 279, 274, 271, 262, 256. Key resistance levels: 296.



Sector ETF's

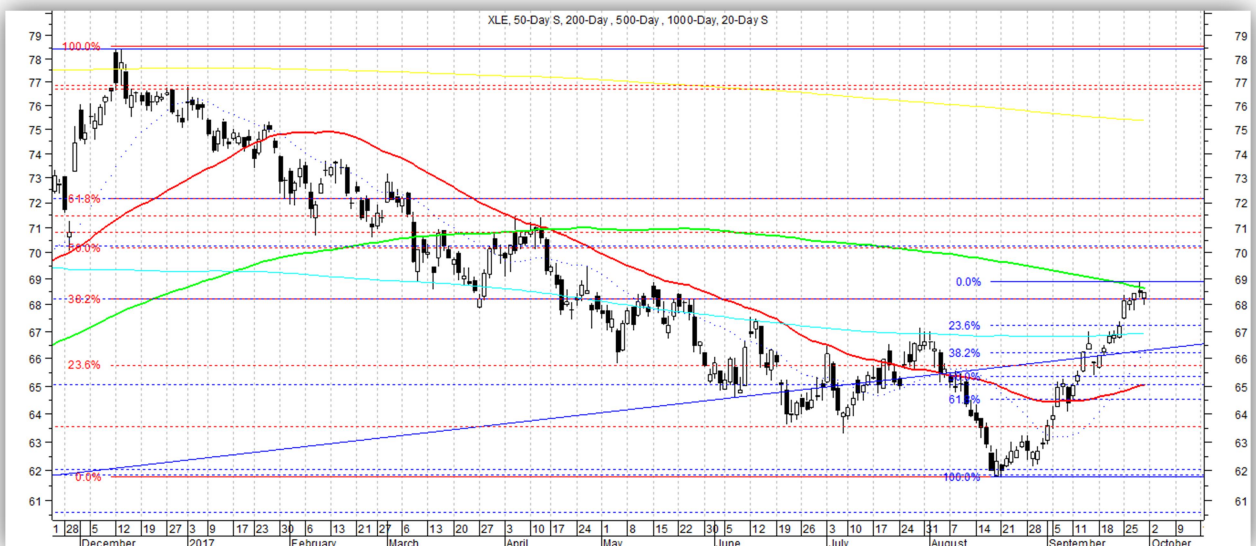
Basic Materials Sector SPDR-XLB

Bullish. New ATH's keeps higher highs in place. A favored sector again. Key support levels: 55.60, 54.75, 53.50, 52.25, 51.50, 50.70. Key resistance levels: 57.



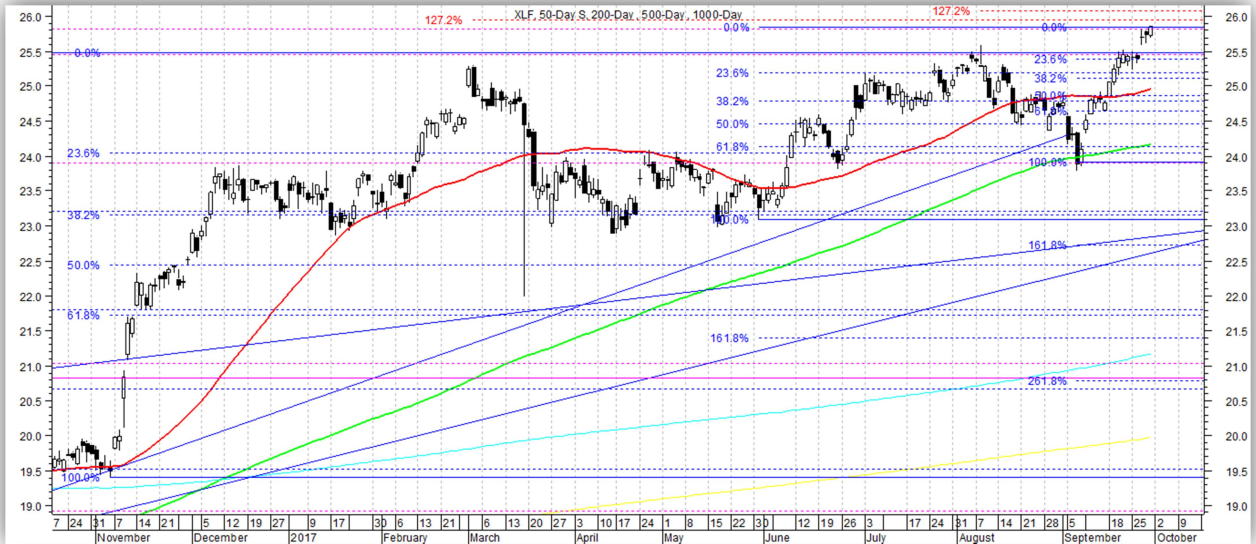
Energy Sector SPDR-XLE

Bearish, intermediate-term; bullish, near-term. Held 61.8% Fibonacci Retracement of 2016 bounce ~61.90. Near-term extended and testing resistance. Bounce probably has more potential eventually, though. Key support levels: 67.25, 66.20, 65.40, 64.50, 61.90, 60.80. Key resistance levels: 68.20-68.90, 71.50, 73, 76.50.



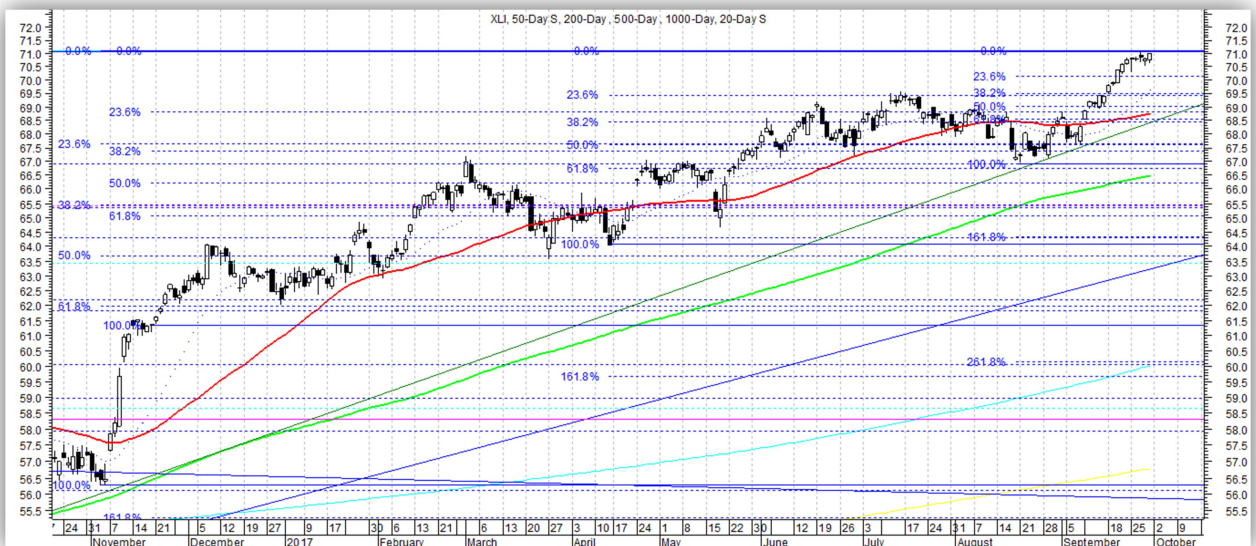
Financial Sector SPDR-XLF

Bullish. Broke out above possible bullish cup-&-handle. Opens further upside potential. Key support levels: 25.40, 25.10, 24.58, 24, 23.15, 21.72, 20.80, 20.60, 19.50. Key resistance levels: 25.95, 26.05.



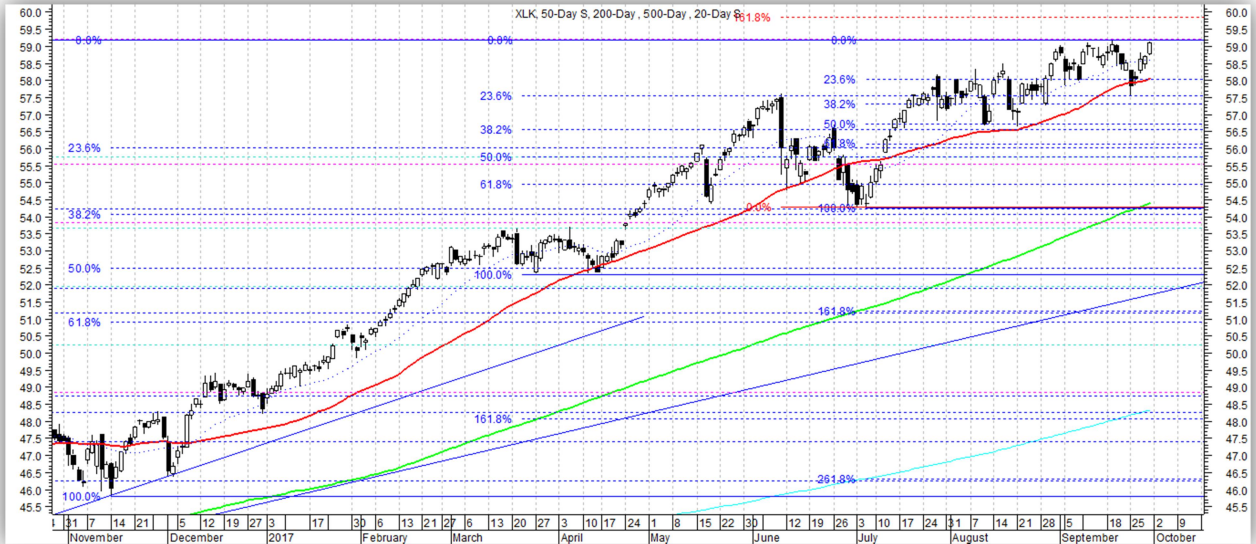
Industrial Sector SPDR-XLI

Bullish. Consolidating ATH's. A favored sector again, into support. Key support levels: 69.50, 68.50, 67.50, 66.95, 64.50, 63.90, 62.50, 61.75, 60.50. Key resistance levels: 71.



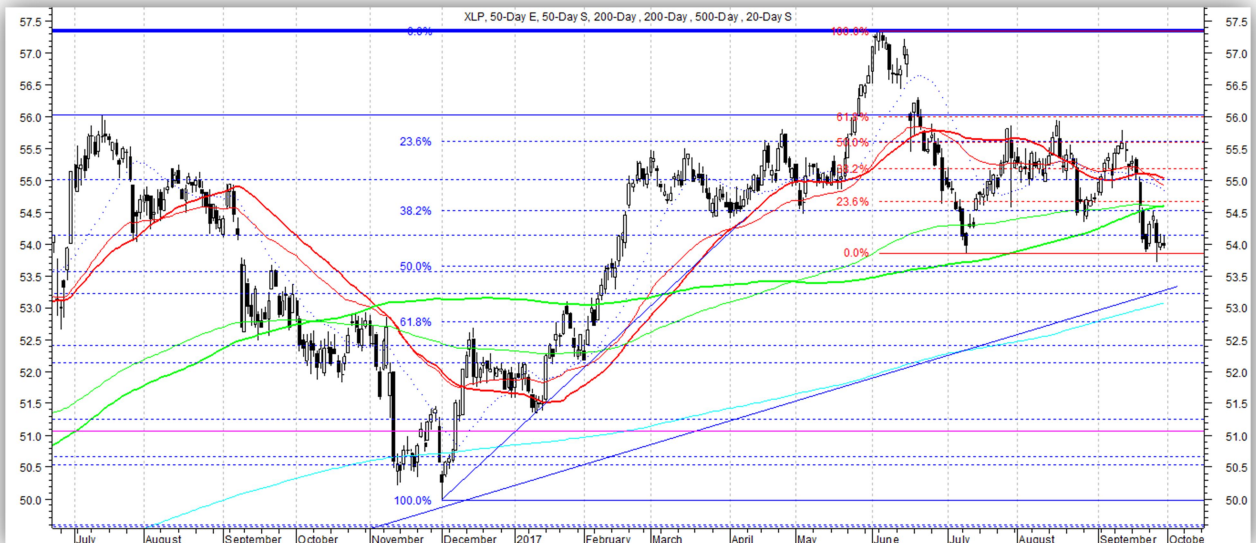
Technology Sector SPDR-XLK

Bullish. Bounced off support, as expected. Testing 52-week highs again. Still a favored sector. Key support levels: 57.90, 57.30, 56.70, 56, 55.50, 54.60, 53.10. Key resistance levels: 59.20, 59.85.



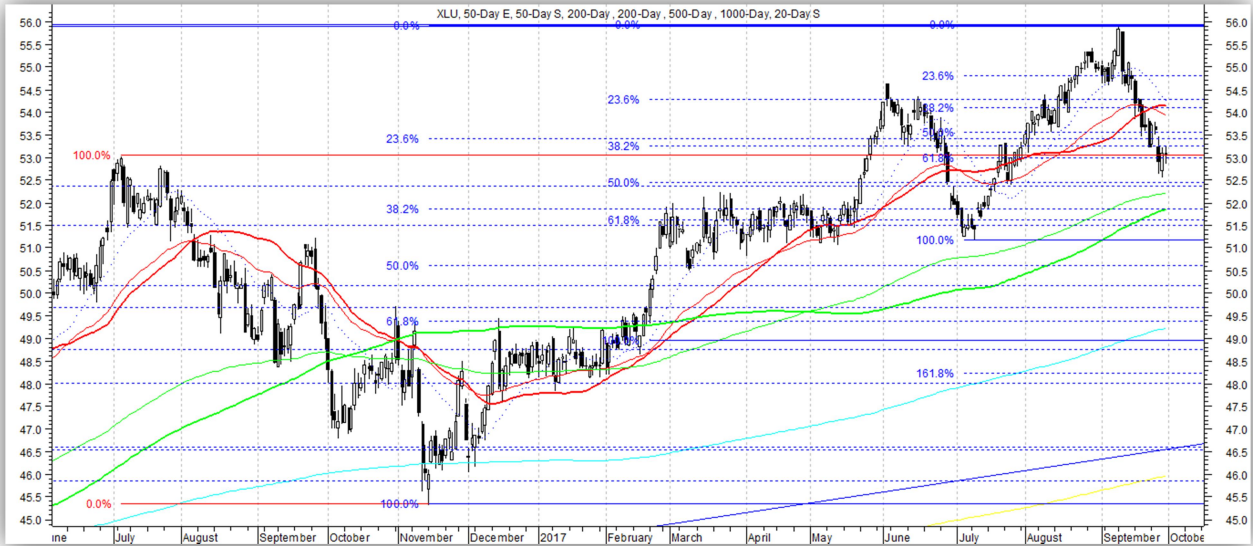
Consumer Staples Sector SPDR-XLP

Bearish. "False breakout" in effect as long as prices stay below ~56. Key support levels: 53.60, 52.75, 52.12, 51.25, 50.50. Key resistance levels: 55.60, 56.00, 56.70, 57.30.



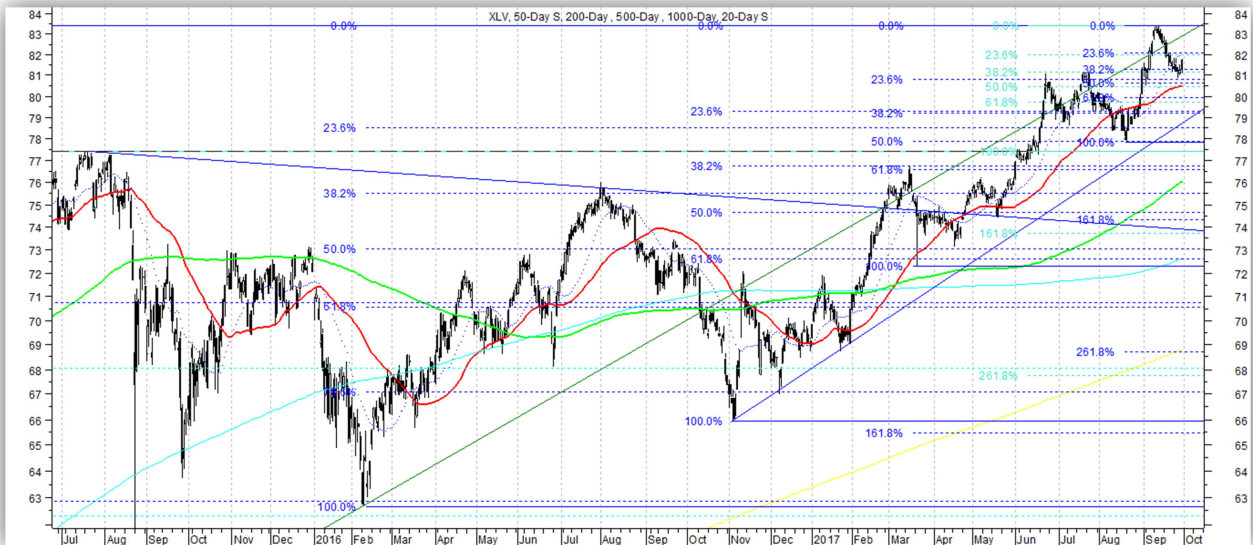
Utility Sector SPDR-XLU

Bullish. Pulling back from All-Time Highs to key test of breakout level now. Key support levels: 53.00, 51.50, 49. Key resistance levels: 54.10, 54.80, 55.90.



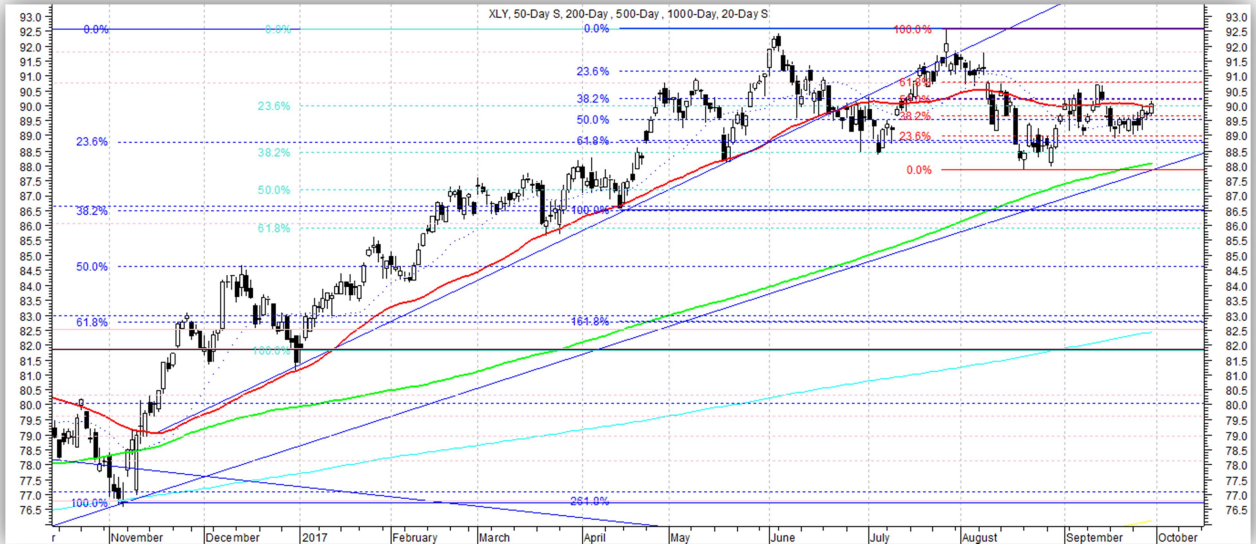
Health Care Sector SPDR-XLV

Bullish. Pulling back from all-time high, nearing key support. A favored sector. Key support levels: 80.60, 80, 77.50, 75.70, 73.50, 71.80. Key resistance levels: 83.50.



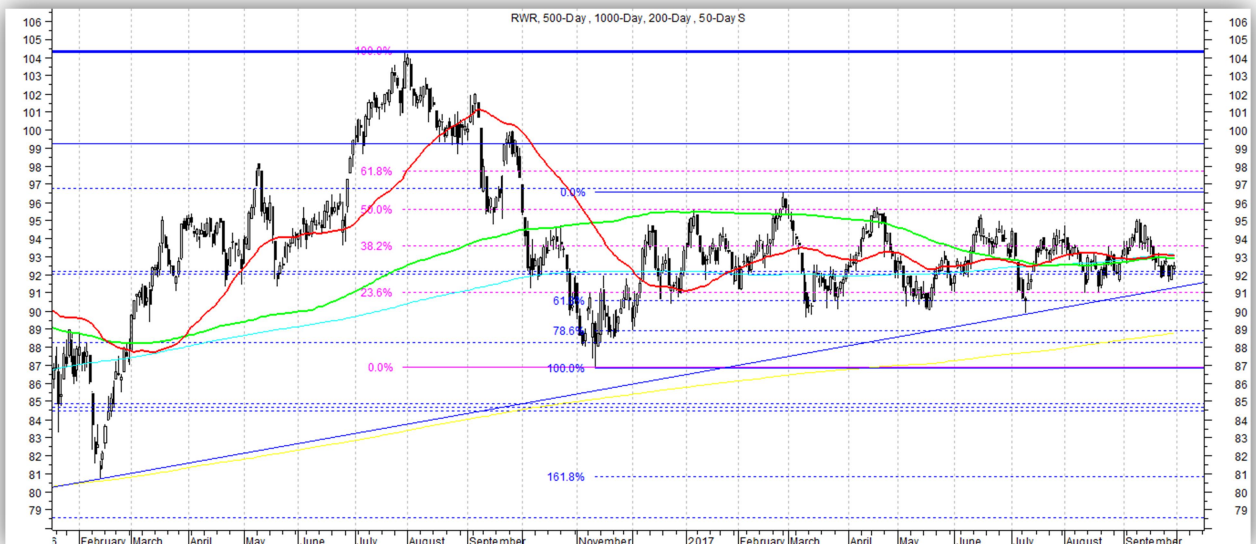
Consumer Discretionary Sector SPDR-XLY

Bearish. Lower lows and potentially lower highs now. Key support levels: 88.80, 87.85, 86.50, 85.50, 83.75, 82. Key resistance levels: 90.75, 92.50.



REIT Sector SPDR-RWR

Bearish, still stuck in nearly 12-month range. Key support levels: 92, 90.50, 88.25, 86.90, 84.50. Key resistance levels: 95.50, 96.50, 97.70.

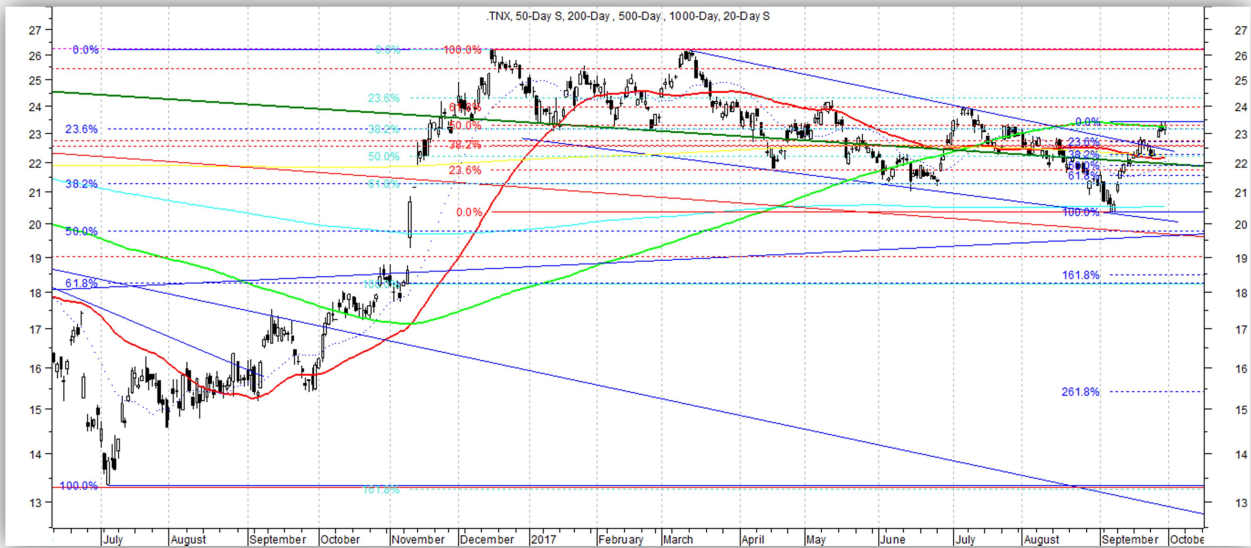


Bonds, Commodities & Currencies

10-Year U.S. Treasury Yield

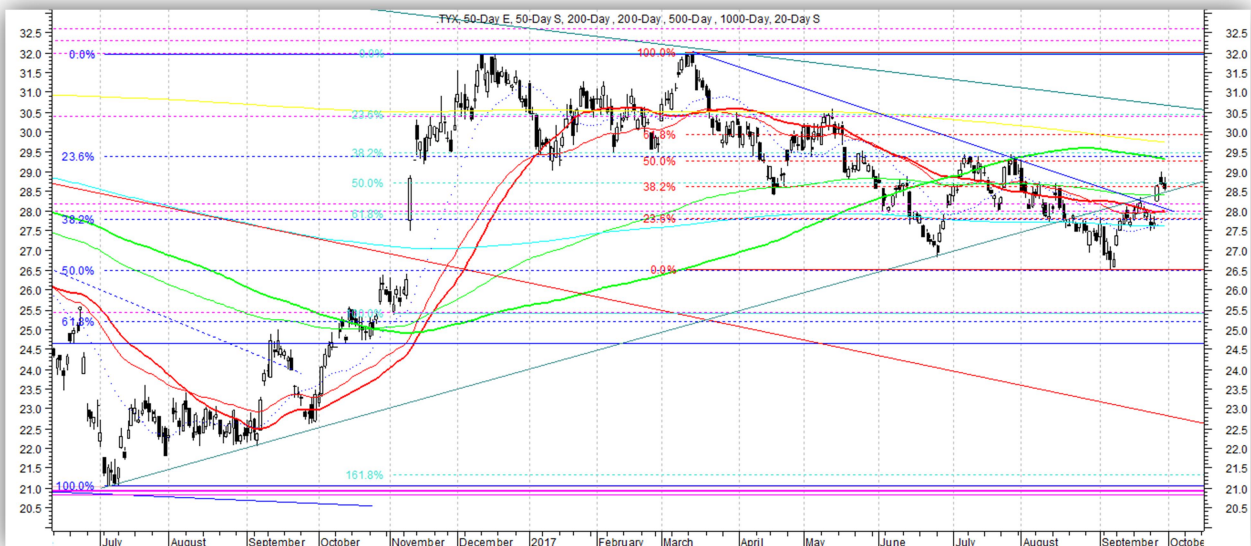
Bullish. Reclaimed again (for now) the post-2007 “regime-defining” down trendline ~2.20%. Long-term, upside still favored and would be selling/shorting 10-Year bonds above 2.20%. Key support levels: 2.19-2.22, 2.04, 1.98, 1.82.

Key resistance levels: 2.35, 2.39, 2.43, 2.62, 2.85, 3.40.



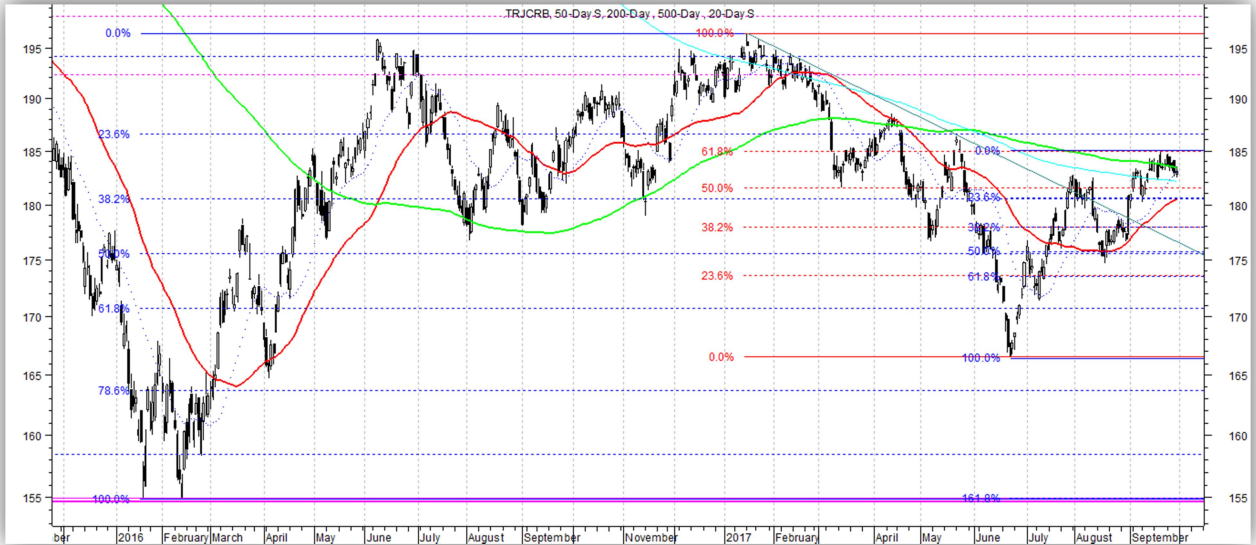
30-Year U.S. Treasury Yield

Bullish. Broke above key resistance ~2.82%; upside favored above there. Key support levels: 2.78-2.82, 2.65, 2.62, 2.52. Key resistance levels: 2.94, 3.02-3.05, 3.20-3.25.



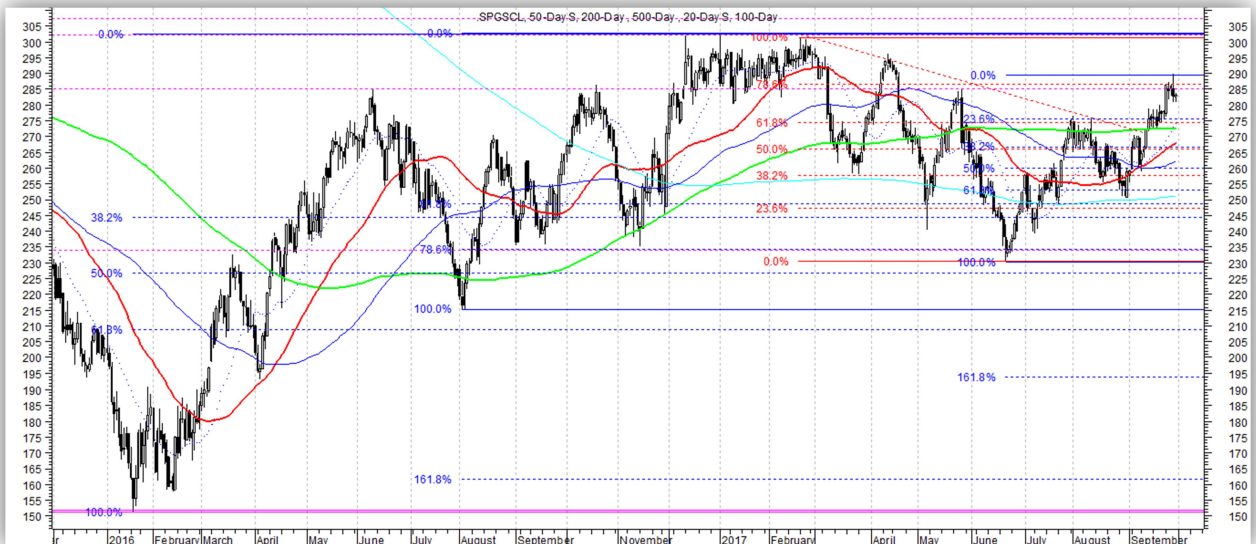
CRB Commodity Index

Bearish, intermediate-term. Range-bound, selling rallies at resistance still. Key support levels: 180, 177, 173, 166.30, 163.90, 155. Key resistance levels: 185, 186.50, 196, 206, 215.



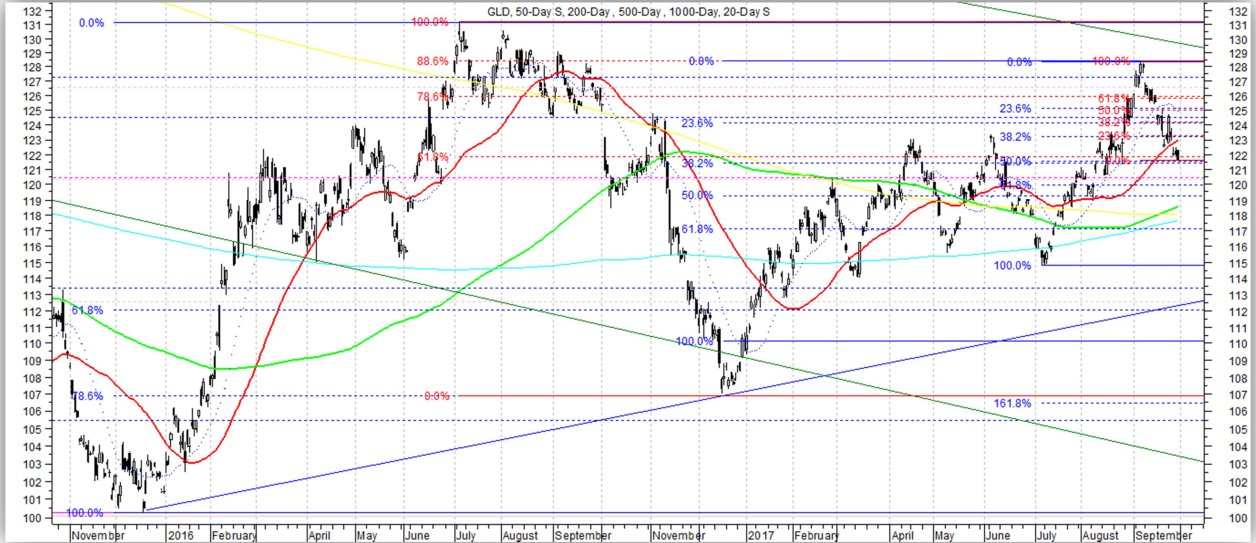
S&P GSCI Crude Oil Index

Range-bound, intermediate-term. Still selling rallies into resistance. Key support levels: 275, 262, 250, 231, 215, 209. Key resistance levels: 287, 299-302, 325, 370, 400.



SPDR Gold Trust (GLD)

Intermediate-term, range-bound. Testing near short-term support now. Key support levels: 121.50, 120, 117, 115, 107. Key resistance levels: 126, 128.40, 130, 131.



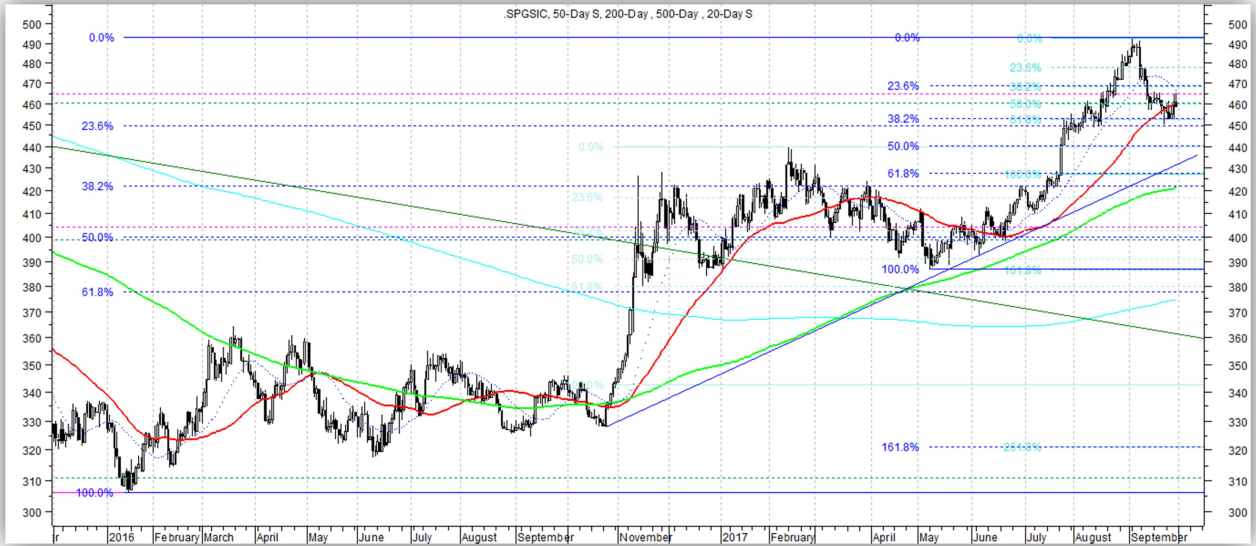
iShares Silver Trust (SLV)

Rangebound. Failed to hold above long-term Down trendline ~16.35. Key support levels: 15.42, 14.40, 13.05. Key resistance levels: 16.25, 16.40, 16.60, 17.10, 17.60, 17.85, 18.15.



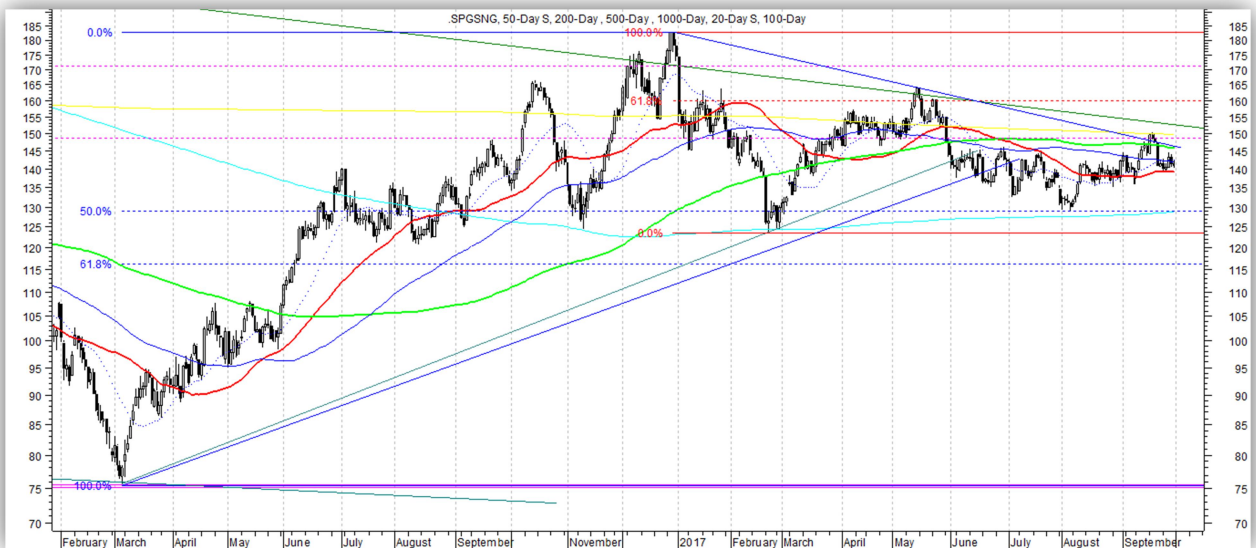
S&P GSCI Copper Index

Bullish. Trying to bounce off key support now ~450; solid long entry point for a trade. Key support levels: 450, 425, 387, 384, 372, 357. Key resistance levels: 493, 512, 560.



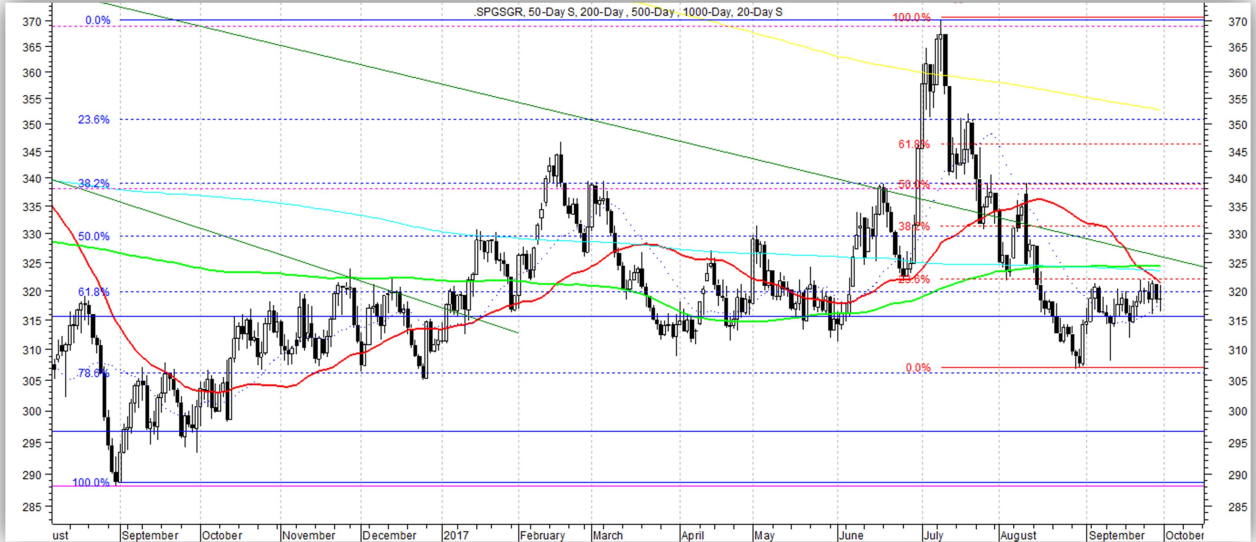
S&P GSCI Natural Gas Index

Rangebound. Key support levels: 129, 124, 116. Key resistance levels: 150, 160, 182.50.



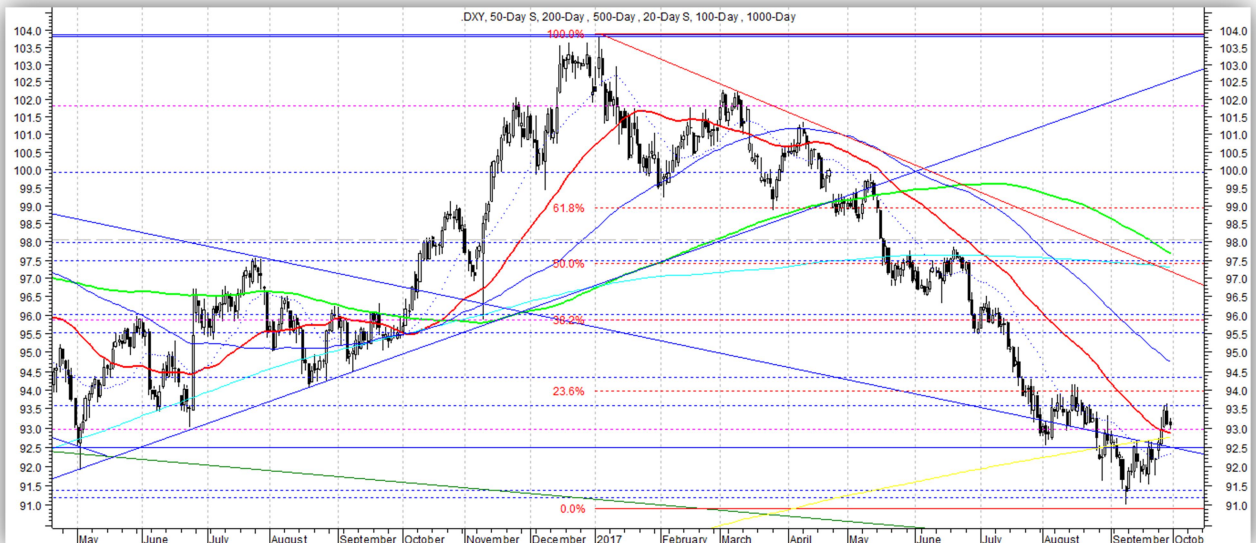
S&P GSCI Grains Index

Bearish. Couldn't hold post-2014 Down trendline. Key support levels: 306, 297, 288. Key resistance levels: 322, 330, 346, 370, 379.



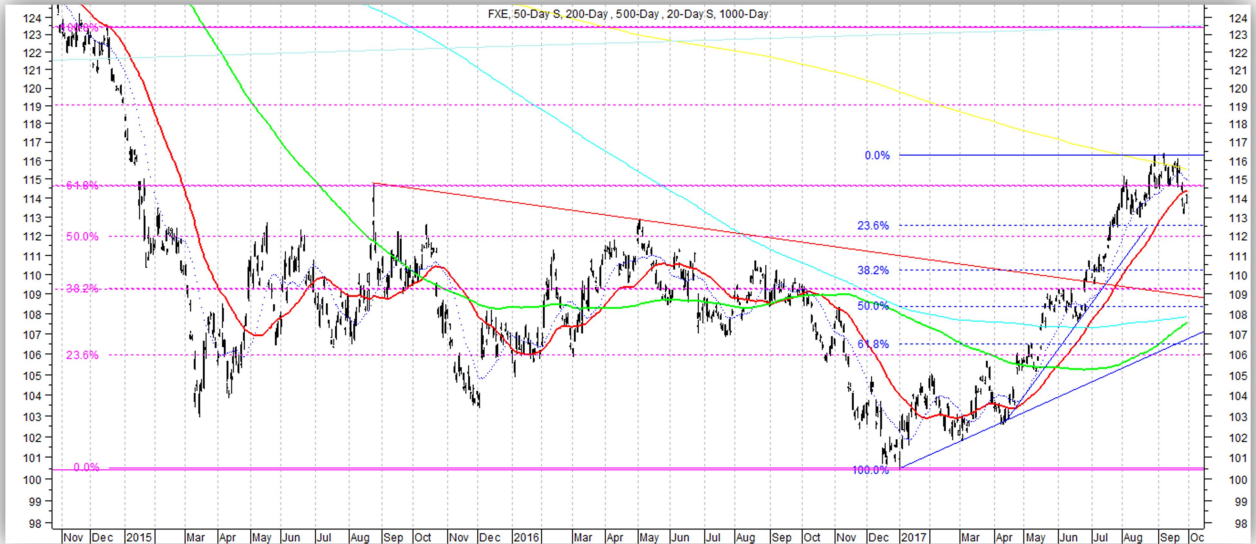
U.S. Dollar Index (DXY)

Bullish. Reclaimed, for now, key support at bottom of multi-year range ~92.5. Key support levels: 92.5, 91.25, 87.5. Key resistance levels: 94, 95.90, 97.50, 99.50, 103.80.



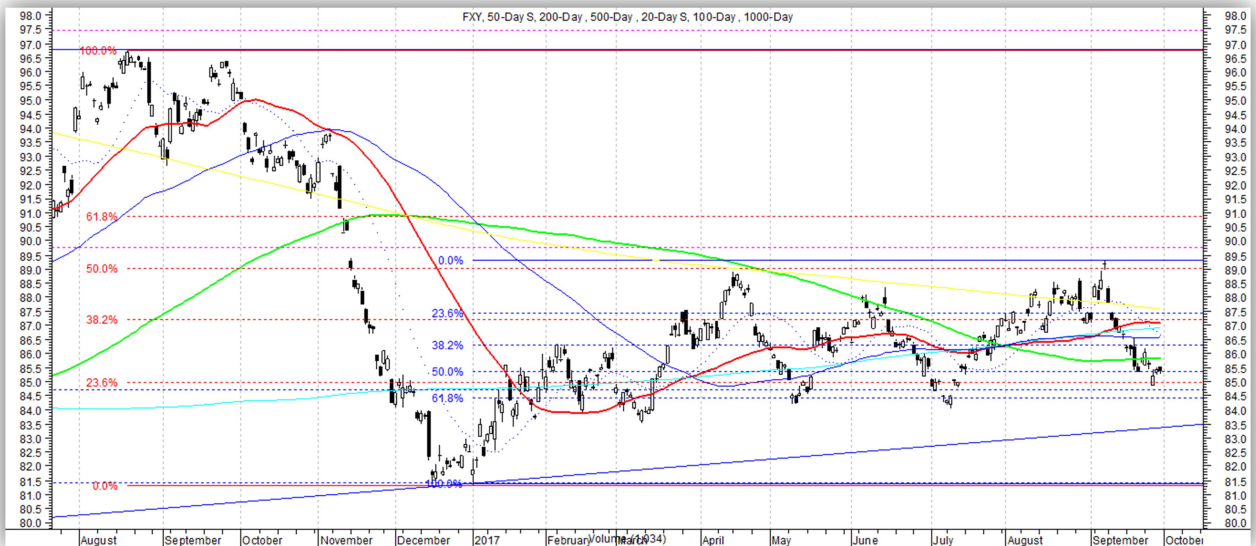
Guggenheim CurrencyShares Euro Trust (FXE)

Bearish. Broke below key support ~114.70. Key support levels: 112.50, 110.25, 106, 100.4. Key resistance levels: 114.70, 116.30, 119, 123.50.



Guggenheim CurrencyShares Yen Trust (FXJ)

Range-bound. Key support levels: 84.25, 81.40. Key resistance levels: 87.20, 89, 90.86.



Relative Strength Rankings-1000 Most Liquid ETF's

Rankings based on JLFMI's proprietary Fund Selection Model. This is a quantitative model designed to identify securities most likely to outperform over intermediate-term, i.e., 2-6 months. Long candidates may be best chosen from top 10% of Rankings while bottom 40% may best be avoided.

Ticker	Security Name	Rank				
		9/29/2017	9/22/2017	9/15/2017	9/8/2017	9/1/2017
TECL	DIREXION DAILY TECHNO BULL 3X ETF	1	1	1	1	1
ROM	PROSHARES ULTRA TECHNOLOGY ETF	2	3	6	5	4
SOXL	DIREXION SEMICONDUCTOR BULL 3X ETF	3	2	22	3	10
TQQQ	PROSHARES ULTRAPRO QQQ ETF	3	4	10	3	3
UDOW	PROSHARES ULTRAPRO DOW 30 ETF	5	5	2	2	2
FBGX	UBS ENHANCED LARGE CAP GROWTH ETN	6	7	5	7	6
QLD	PROSHARES ULTRA QQQ ETF	7	6	11	6	6
EWO	ISHARES MSCI AUSTRIA CAPPED ETF	8	8	3	8	11
EDC	DIREXION DAILY EMG MRKTS BULL 3X ETF	9	10	14	15	21
IGV	ISHARES NORTH AMRN TECH SOFT ETF	10	12	34	22	18
UPRO	PROSHARES ULTRAPRO S&P 500 ETF	10	11	7	10	8
SPXL	DIREXION DAILY S&P 500 BULL 3X ETF	12	15	8	12	9
ROBO	ROBO GBL RBOTCS AND AUTMATN INDX ETF	13	19	13	14	12
SOXX	ISHARES PHLX SEMICONDUCTOR ETF	13	13	69	13	15
DDM	PROSHARES ULTRA DOW 30 ETF	15	9	4	9	5
PSI	POWERSHARE DYNAMIC SEMICONDUCTOR ETF	16	18	56	11	20
CQQQ	GUGGENHEIM CHINA TECHNOLOGY ETF	17	22	42	60	145
IXN	ISHARES GLOBAL TECH ETF	18	19	20	20	22
KWEB	KRANESHARES CSI CHINA INTERNET ETF	19	21	23	26	64
QTEC	FIRST TST NASDAQ 100 TEC ID ETF	20	15	66	17	16
EMQQ	EMQQ EMRNG MKT INTRNT ECMRC ETF	21	14	21	19	51
LIT	GLOBAL X LITHIUM ETF	22	17	8	16	14
GVAL	CAMBRIA GLOBAL VALUE ETF	23	24	12	28	33
SMH	VANECK VECTORS SEMICONDUCTOR ETF	23	23	72	21	27
FGM	FIRST TRUST GERMANY ALPHADEX ETF	25	27	18	38	62
SOCL	GLOBAL X SOCIAL MEDIA INDEX ETF	26	31	45	55	99
MTK	SPDR MORGAN STANLEY TECHNOLOGY ETF	27	26	15	18	17
PNQI	POWERSHARES NASDAQ INTERNET ETF	28	25	47	23	26
PGJ	POWERSHARES GOLDEN DRAGON ETF	29	31	66	46	102
FTEC	FIDELITY MSCI INFOR TECH INDX ETF	30	31	60	27	30
IYW	ISHARES US TECHNOLOGY ETF	30	28	65	29	32
BRF	VANECK VECTRS BRAZIL SML CAP ETF	32	54	24	39	98
VGT	VANGUARD INFORMATION TECHNOLOGY ETF	32	29	55	30	35
VIDI	VIDENT INTERNATIONAL EQUITY ETF	34	51	33	54	61
EWY	ISHARES MSCI SOUTH KOREA CAP ETF	35	40	46	79	74
PSJ	POWERSHARES DYNAMIC SOFTWARE ETF	36	67	75	76	39
EWN	ISHARES MSCI NETHERLANDS ETF	37	43	28	40	66
FIGY	BARCLAYS GLOBAL HIGH YIELD ETN	38	55	35	69	40
XPP	PROSHARES ULTRA FTSE CHINA 50 ETF	39	34	82	66	80
EPOL	ISHARES MSCI POLAND CAPPED ETF	40	38	36	45	69
IGM	ISHARES NORTH AMERICAN TECH ETF	41	39	51	32	33
FNI	FIRST TRUST ISE CHINDIA INDEX ETF	42	45	68	59	113
FSZ	FIRST TRUST SWITZ ALPHADEX ETF	43	36	19	53	28
YINN	DIREXION DLY FTSE CHNA BUL 3X ETF	44	36	76	50	57
INDL	DIREXN DAILY INDIA BUL 3X SHARES ETF	45	30	16	36	36
FPXI	FIRST TRUST INTERNATIONAL IPO ETF	46	35	74	61	96
RYT	GUGGENHEIM S&P 500 EQUAL WE TECH ETF	47	41	81	35	25
DBKO	DETSX X TRK MSCI STH KRA HDG EQY ETF	48	49	38	49	94

EDEN	ISHARES MSCI DEN CAP INV INDX ETF	49	44	50	64	141
XLK	TECHNOLOGY SELECT SECTOR SPDR ETF	50	46	76	34	41
FXL	FIRST TRUST TECHNOLOGY ALPHADEX ETF	51	53	143	56	44
GXC	SPDR S&P CHINA ETF	52	59	97	94	169
BKF	ISHARES MSCI BRIC ETF	53	76	83	104	182
EURL	DIREXZN DLY FTSE EURP BUL 3X SHS ETF	54	62	41	44	45
FCA	FIRST TRUST CHINA ALPHADEX ETF	55	64	93	148	188
PXLG	POWERSHARES RSSL TP 200 PR GRWT ETF	56	65	63	58	46
XHE	SPDR S&P HEALTH CARE EQUIPMENT ETF	56	114	129	81	73
QQQ	POWERSHARES QQQ TRUST SRS 1 ETF	58	58	91	37	37
IHI	ISHARES US MEDICAL DEVICES ETF	59	80	112	103	160
IPKW	POWERSHARES INTL BUYBACK ACHIEV ETF	60	75	42	48	91
CURE	DRXN DAILY HEALTHCRE BULL 3X SHS ETF	61	47	117	72	51
DZK	DIREXION DAILY DVP MKTS BULL 3X ETF	62	57	44	47	43
SMIN	ISHARES MSCI INDIA SMALL CAP ETF	62	50	17	90	88
EFO	PROSHARES ULTRA MSCI EAFE ETF	64	63	49	62	49
ITB	ISHARES US HOME CONSTRUCT ETF	65	113	40	31	42
FDN	FIRST TRUST INTERNET INDEX CF ETF	66	60	84	42	47
RXL	PROSHARES ULTRA HEALTH CARE ETF	67	67	160	112	76
MTUM	ISHARES EDGE MSCI USA MOMNTM ETF	68	73	57	65	68
EEMA	ISHARES MSCI EMERGING MARKETS AS ETF	69	67	63	90	151
DFE	WISDOMTREE EUROPE SMLCP DIVIDEND ETF	70	71	69	73	78
EEM	ISHARES MSCI EMERGING MARKETS ETF	71	80	90	112	198
INCO	COLUMBIA INDIA CONSUMER ETF	72	65	30	68	163
PSCH	POWERSHARES S&P SMAL HEALTH PORT ETF	73	156	287	102	65
ARGT	GLOBAL X MSCI ARGENTINA ETF	74	42	27	24	28
EPI	WISDOMTREE INDIA EARNINGS ETF	74	52	29	74	84
IWY	ISHARES RUSSELL TOP 200 GROWTH ETF	76	84	85	69	53
EFNL	ISHARES MSCI FINLAND CAP INDEX ETF	77	56	39	85	82
CHIQ	GLOBAL X CHINA CONSUMER ETF	78	61	88	75	148
TAO	GUGGENHEIM CHINA REAL ESTATE ETF	78	72	108	94	262
SKYY	FIRST TRUST ISE CLOUD COMP IDX ETF	80	83	172	82	58
PALL	ETFS PHYSICAL PALLADIUM SHARES ETF	81	48	26	33	97
FAS	DIREXION DAILY FINANCIAL BULL 3X ETF	82	92	25	25	23
DLS	WISDOMTREE INTL SMALLCP DIVIDEND ETF	83	86	78	101	115
AAXJ	ISHARES MSCI ALL COUNT ASA EX JP ETF	84	84	105	129	208
XSD	SPDR S&P SEMICONDUCTOR ETF	85	89	338	51	93
EWQ	ISHARES MSCI FRANCE ETF	86	88	73	80	111
GMM	SPDR S&P EMERGING MARKETS ETF	87	90	104	134	215
IEMG	ISHARES CORE MSCI EMERGING ETF	88	95	101	147	234
ONEQ	FIDELITY NASDAQ COMPOSITE INDX ETF	88	102	156	67	48
INP	BARCLAYS BANK IPATH MSCI INDIA ETN	90	79	53	97	176
PTH	PWRSHRS DWA HEALTHCARE MNTM ETF	91	146	408	164	158
MGK	VANGUARD MEGA CAP GROWTH ETF	92	93	95	83	71
DGS	WSDMTREE EMRG MKTS SMALLCAP DVD ETF	93	91	154	170	275
GMF	SPDR S&P EMERGING ASIA PACIFIC ETF	93	93	134	145	253
INDY	ISHARES INDIA 50 ETF	93	77	61	108	170
WOOD	ISHARES GLOBAL TIMBER FORESTRY ETF	96	124	89	136	99
FRN	GUGGENHEIM FRONTIER MARKETS ETF	97	70	62	109	79
QCLN	FIRST TST NASDAQ CLEAN ED ID ETF	98	177	189	84	134
TLTE	FLEXSH MNGST EMR MKT FCTR TL IDX ETF	99	101	124	152	199
IWF	ISHARES RUSSELL 1000 GROWTH ETF	100	111	110	98	77
PDN	PWRSHRS DEV MKTS EX US SMALL MID ETF	101	121	115	130	182
DVYE	ISHARES EMERGING MARKETS DIV ETF	102	126	121	162	226
JKE	ISHARES MRNSTAR LRG CAP GRW ETF	102	97	109	88	86
XBI	SPDR S&P BIOTECH ETF	104	133	509	255	150
PIE	POWERSHARES DWA EMRG MKTS MOM ETF	105	127	261	248	369
PWB	POWERSHARES DYNAMIC LRE CAP GTH ETF	106	99	130	132	82
EWT	ISHARES MSCI TAIWAN ETF	107	111	174	140	193
IFV	FST TRT DSY WRGHT INTRNL FOCS 5 ETF	107	110	121	119	172
SCIF	VANCK VCTR INDIA SML CAP INDX ETF	107	74	31	149	107
PTF	PWRSHRS DWA TECHNOLOGY MNTM ETF	110	128	427	185	165

The Lyons Share

VONG	VANGUARD RUSSELL 1000 GROWTH ETF	111	105	118	87	81
ECH	ISHARES MSCI CHILE CAPPED ETF	112	78	57	106	287
REMX	VANCK VCTR RARE EARTH STRTG METL ETF	113	121	54	63	55
PIN	POWERSHARES INDIA PORTFOLIO ETF	114	82	59	85	138
QQQE	DIREXION NASDAQ 100 EQL WGHT IDX ETF	114	100	280	94	59
QQEW	FIRST TR NAS 100 EQL WEGHTD INDX ETF	116	106	291	89	63
FNDE	SCHWAB FUNDA EMG MKTS LARGE COM ETF	117	116	113	126	142
EWD	ISHARES MSCI SWEDEN ETF	118	136	101	139	146
VUG	VANGUARD GROWTH ETF	119	124	123	115	109
UBR	PROSHARES ULTRA MSCI BRZ CPD ETF	120	162	137	155	343
DBB	POWERSHARES DB BASE METALS ETF	121	256	107	126	195
INDA	ISHARES MSCI INDIA INDEX ETF	122	119	79	144	238
FNDC	SCHWAB FUNDAMENTAL INTL SMAL COM ETF	123	133	111	160	190
RSXJ	VANECK VECTOR RUSSIA SML CAP ETF	124	312	153	385	38
EWI	ISHARES MSCI ITALY CAPPED ETF	125	87	80	110	139
CHW	CALAMOS GLOBAL DYNAMIC INCOME CF	126	155	182	203	104
PIZ	POWERSHARES DWA DEV MKTS MOM ETF	127	140	186	189	267
DFJ	WISDOMTREE JAPAN SMALCP DIVIDEND ETF	128	104	137	122	234
PGAL	GLOBAL X FTSE PORTUGAL 20 ETF	129	144	128	110	254
VVO	VANGUARD FTSE EMERGING MARKETS ETF	130	129	150	197	322
PXH	POWERSHARES FTSE RAFI EMER MKTS ETF	131	121	146	117	177
IVW	ISHARES S&P 500 GROWTH ETF	132	119	130	131	127
VOOG	VANGUARD S&P 500 GROWTH ETF	133	117	133	137	123
FBT	FIRST TRUST NYSE ARCA BIOTECH ID ETF	134	157	516	350	187
DIM	WISDOMTREE INTL MIDCAP DIVIDEND ETF	135	109	103	150	140
EWG	ISHARES MSCI GERMANY ETF	136	107	97	182	207
FEZ	SPDR EURO STOXX 50 ETF	136	115	116	107	181
EWP	ISHARES MSCI SPAIN CAPPED ETF	138	103	87	124	239
SPYG	SPDR S&P 500 GROWTH ETF	138	129	147	121	130
SCHG	SCHWAB US LARGE CAP GROWTH ETF	140	141	130	114	87
ITA	ISHARES US AEROSPACE DEFENSE ETF	141	98	32	51	13
SCHE	SCHWAB EMERGING MARKETS EQUITY ETF	141	138	175	218	313
BIB	PROSHARES ULTRA NASDAQ BIOTECH ETF	143	142	618	333	255
IQDY	FLEXSHS INTL QTY DIV DYN IND ETF	144	169	126	342	189
CGO	CALAMOS GLOBAL TOTAL RETURN CF	145	108	149	176	88
EFG	ISHARES MSCI EAFE GROWTH ETF	146	148	198	271	294
INXX	COLUMBIA INDIA INFRASTRUCTR ETF	147	96	52	135	167
RPG	GUGGENHEIM S&P 500 PURE GROWTH ETF	148	161	187	158	167
UYM	PROSHARES ULTRA BASIC MATERIALS ETF	149	139	48	41	92
UYG	PROSHARES ULTRA FINANCIALS ETF	150	159	36	42	31
EZA	ISHARES MSCI SOUTH AFRICA ETF	151	132	271	336	501
SCHC	SCHWAB INTERNATNAL SMALL CAP EQY ETF	152	191	180	236	261
VSS	VGRD FTSE ALL WRLD EX US SML CAP ETF	153	175	176	230	273
IEUR	ISHARES CORE MSCI EUROPE ETF	154	150	120	173	184
BRZU	DIREXION BRAZIL BULL 3X SHARES ETF	155	215	283	296	450
VGK	VANGUARD FTSE EUROPE ETF	155	150	119	189	184
ILF	ISHARES LATIN AMERICA 40 ETF	157	189	135	183	461
DEM	WISDOMTREE EMRG MRKT HG DIV ETF	158	157	271	296	307
EWX	SPDR S&P EMERGING MRKT SML CP ETF	158	183	256	259	410
MXI	ISHARES GLOBAL MATERIALS ETF	160	167	106	143	162
EWV	ISHARES MSCI MEXICO CAPPED ETF	161	162	199	256	595
JJC	BRCLYS BK IPATH BLOOM COPPER SUB ETN	162	326	151	125	118
COPX	GLOBAL X COPPER MINERS ETF	163	164	91	92	75
EIRL	ISHARES MSCI CAP INVEST MKT IDX ETF	163	196	194	251	281
EWK	ISHARES MSCI BELGIUM CAPPED ETF	165	186	143	274	339
FBZ	FIRST TRUST BRAZIL ALPHADEX ETF	166	228	148	299	482
HEEM	ISHARES CURRENCY HEDG MSCI EMERG ETF	167	178	238	242	345
PPA	POWERSHARES AEROSPACE & DEFENSE ETF	168	137	86	71	24
DBEM	DEUTH X TRK MSCI EMG MRK HDG EQY ETF	169	173	211	236	308
CHIX	GLOBAL X CHINA FINANCIALS ETF	170	164	312	276	302
CWI	SPDR MSCI ACWI EX-US ETF	170	184	218	201	299
QEMM	SPDR MSCI EMRG MKT STRTGCFCTR ETF	170	188	257	240	425

The Lyons Share

URTY	PROSHARES ULTRAPRO RUSSELL 2000 ETF	170	504	389	167	117
IQDF	FLEXSHARES INTL QTY DIV INDEX ETF	174	192	143	284	247
VXUS	VANGUARD TOTAL INTERNATIONAL STK ETF	174	175	166	251	258
EDIV	SPDR S&P EMERGING MARKETS DIVID ETF	176	166	255	269	481
VEU	VANGUARD FTSE ALL WORLD EX US ETF	177	174	168	272	263
DGRE	WSDMTR EMRGNG MKT QLT DIV GWTH ETF	178	214	358	309	517
DIA	SPDR DOW JONES INDUSTRIAL AVRG ETF	179	142	114	104	72
XAR	SPDR S&P AEROSPACE DEFENSE ETF	179	154	69	57	19
ACWX	ISHARES MSCI ACWI EX US ETF	181	185	179	280	271
ECON	COLUMBIA EMERNG MKTS CONSMR ETF	181	179	279	263	444
IEV	ISHARES EUROPE ETF	181	168	139	224	222
FTCS	FIRST TRUST CAPITAL STRENGTH ETF	184	149	140	181	125
QQQX	NUVEEN NASDAQ 100 DYNAMIC OVRWRT CF	185	204	307	77	127
TNA	DIREXION DAILY SMALL CAP BULL 3X ETF	186	506	395	178	114
JKD	ISHARES MORNINGSTAR LARGE CAP ETF	187	153	161	157	133
GII	SPDR S&P GLOBAL INFRASTRUCTURE ETF	188	199	257	246	403
IDOG	ALPS INTL SECTOR DIVIDEND DOGS ETF	188	211	140	304	313
CUT	GUGGENHEIM MSCI GLOBAL TIMBER ETF	190	217	169	287	231
XLG	GUGGENHEIM SP 500 TOP 50 ETF	191	172	170	146	179
IHDG	WISDOMTREE INTER HDG QLY DIV GRT ETF	192	131	215	208	174
RYH	GUGGENHEIM S&P 500 EQUAL WEIG HC ETF	193	197	408	278	294
JPIN	JPMORGAN DVRSFD RTRN INTRNL EQT ETF	194	232	245	319	383
TLTD	FLEXSH MRNGST DEV MKT EX US FCTR ETF	195	207	165	220	245
EEMS	ISHARES MSCI EMER SMALL CAP ETF	196	226	312	404	511
EWL	ISHARES MSCI SWITZERLAND CAP ETF	197	170	210	337	218
SCJ	ISHARES MSCI JAPAN SMALL CAP ETF	198	194	248	284	420
IEFA	ISHARES CORE MSCI EAFE ETF	199	203	166	291	275
PICK	ISHARES MSCI GLL MET MIN PROD ETF	200	279	96	99	101
AFK	VANECK VECTORS AFRICA INDEX ETF	201	224	245	310	506
LABU	DIREXION DALY S&P BIOTCH BULL 3X ETF	201	170	361	187	199
DGRW	WISDOMTREE US QLT DIV GRW ETF	203	182	184	166	152
EUMV	ISHARES EDGE MSCI MIN VOL EUR ETF	204	225	238	377	441
VEA	VANGUARD FTSE DEVELOPED MARKETS ETF	205	208	184	294	283
FPX	FIRST TRUST IPOX-100 INDEX ETF	206	275	448	421	257
HOML	UBS AG ETCS MON 2XD ISE HLDS ETN	207	180	193	175	203
PSCT	POWERSHARES S&P SMALL TECH PORT ETF	207	273	326	196	157
ACWI	ISHARES MSCI ACWI ETF	209	205	187	256	240
PDP	POWERSHARES DWA MOMENTUM ETF	210	276	264	204	230
FM	ISHARES MSCI FRONTIER 100 ETF	211	118	152	165	318
VT	VANGUARD TOTAL WORLD STOCK ETF	212	190	222	230	236
EUFN	ISHARES MSCI EUROPE FINANCIALS ETF	213	159	97	133	161
LMLP	UBS ETRACS MTLY PAY 2XLEVERAGED ETN	214	147	158	119	127
MOAT	VANECK VCTR MORNGSTR WD MOAT ETF	215	238	232	173	131
CRBN	ISHARES MSCI ACWI LW CRBN TGT ETF	216	245	190	230	228
SCHF	SCHWAB INTERNATIONAL EQUITY ETF	217	236	225	311	324
FEU	SPDR STOXX EUROPE 50 ETF	218	218	240	227	280
VHT	VANGUARD HEALTH CARE ETF	219	211	456	402	306
EWZ	ISHARES MSCI BRAZIL CAPPED ETF	220	364	285	328	548
MGC	VANGUARD MEGA CAP ETF	220	206	181	180	179
QQXT	FIRST TST NASDAQ 100 EX TE SC ID ETF	222	278	393	229	143
BBRC	COLUMBIA BEYOND BRICS ETF	223	230	276	393	524
FHK	FIRST TRUST HONG KONG ALPHADEX ETF	224	223	358	349	566
FHLC	FIDELITY MSCI HEALTH CARE INDX ETF	225	219	458	385	305
SBIO	ALPS MEDICAL BREAKTHROUGHS ETF	225	291	635	609	458
MORL	UBS ETRACS 2XLEVERAGED REIT ETN	227	152	266	224	371
CFA	VICTORY CEMP US 500 VOLATILITY ETF	228	271	195	171	159
URE	PROSHARES ULTRA REAL ESTATE ETF	229	250	277	374	324
EXI	ISHARES GLOBAL INDUSTRIALS ETF	230	202	136	194	116
IOO	ISHARES GLOBAL 100 ETF	230	211	163	259	255
RUSL	DIREXION DAILY RSSIA BULL 3X SHS ETF	232	327	207	176	152
HYXU	ISHARES INTRNTNL HI YLD BND ETF	233	298	330	347	461
MIDU	DIREXION DAILY MID CAP BULL 3X ETF	234	409	127	116	50

The Lyons Share

CFO	VICTORY CEMP US 500 ENHNCV VLTTY ETF	235	258	201	191	146
DWM	WISDOMTREE INTERNATIONAL EQY ETF	235	197	220	298	336
EFA	ISHARES MSCI EAFE ETF	237	235	202	337	338
IWP	ISHARES RUSSELL MID CAP GROWTH ETF	238	303	366	319	223
GREK	GLOBAL X MSCI GREECE ETF	239	135	94	78	110
IYH	ISHARES US HEALTHCARE ETF	240	229	457	439	339
GWL	SPDR S&P WORLD EX US ETF	241	253	297	234	370
CGW	GUGGENHEIM S&P GLOBAL WATER IDX ETF	242	293	315	375	278
FNDF	SCHWAB FUNDAMENTAL INL LARGE COM ETF	242	264	219	292	290
EELV	POWERSHARES S&P EMERGING MARKETS ETF	244	283	320	341	534
PBD	POWERSHARES GLOBAL CLEAN ENERGY ETF	245	323	374	281	439
IHF	ISHARES US HEALTHCARE PRO ETF	246	221	289	142	137
UWM	PROSHARES ULTRA RUSSELL 2000 ETF	247	505	454	245	136
IFEU	ISHARES EUROPE DEVELOPED REL EST ETF	248	300	316	414	476
JXI	ISHARES GLOBAL UTILITIES ETF	248	239	228	415	559
OEF	ISHARES S&P 100 ETF	250	219	212	223	233
PBW	POWERSHARES WILDER CLEAN ENERGY ETF	250	349	397	290	414
IWB	ISHARES RUSSELL 1000 ETF	252	268	224	228	217
VV	VANGUARD LARGE CAP ETF	252	242	200	207	206
VPU	VANGUARD UTILITIES ETF	254	180	247	359	475
DGRO	ISHARES CORE DIVIDEND GROWTH ETF	255	216	190	211	201
COW	BACLYS BK IPATH BLOOM LIVESTOCK ETN	256	369	203	163	241
PXF	PWRSHS FTSE RAFI DVPD MKT EX US ETF	257	226	206	178	244
GURU	GLOBAL X GURU INDEX ETF	258	272	349	226	175
IVV	ISHARES CORE S&P 500 ETF	259	230	213	210	211
CSD	GUGGENHEIM S&P SPIN OFF ETF	260	371	418	317	192
VPL	VANGUARD FTSE PACIFIC ETF	261	265	278	370	396
FUTY	FIDELITY MSCI UTILITIES INDX ETF	262	195	273	327	469
DOD	ELEM DGS DW LKD DJ HGH SLCT 10 ETN	263	393	305	352	120
EMFM	GLOBAL X NEXT EMERGING FRONTIER ETF	263	187	314	318	551
GWX	SPDR S&P INTERNATIONAL SMALL CAP ETF	265	296	365	276	438
DIVC	CITIGRP C TRKS MLR HWD STRA DIV ETN	266	221	254	246	264
SCHX	SCHWAB US LARGE CAP ETF	267	243	205	220	201
PSL	PWRSHRS DWA CNSMR STPLS MNTM ETF	268	337	369	344	519
VOO	VANGUARD S&P 500 ETF	268	248	207	212	214
EWK	ISHARES MSCI HONG KONG ETF	270	280	324	312	451
FFTY	INNOVATOR IBD 50 ETF	271	248	285	240	250
DRW	WISDOMTREE GLOBAL EX-US REAL EST ETF	272	210	292	360	531
IQDE	FLEXSHS INTL QTY DIV DEF INDX ETF	272	308	268	461	456
SPPP	SPROTT PHYSICAL PLATINUM PAL CF	274	145	172	156	227
FXI	ISHARES CHINA LARGE CAP ETF	275	244	354	340	373
XHS	SPDR S&P HEALTH CARE SERVICES ETF	276	327	399	218	237
CSQ	CALAMOS STRATEGIC TOTAL RETURN CF	277	236	234	325	102
PIO	POWERSHARES GLOBAL WATER ETF	278	320	431	378	365
AOA	ISHARES CORE AGGRESSIVE ALLOCATI ETF	279	290	362	366	355
SPY	SPDR S&P 500 ETF	280	252	231	172	220
VONE	VANGUARD RUSSELL 1000 ETF	281	240	226	214	216
XLU	SELECT SECTOR UTI SELECT SPDR ETF	282	200	288	331	509
VOT	VANGUARD MID CAP GROWTH ETF	283	295	401	346	293
XLV	SELECT SECTOR HEALTH CARE SPDR ETF	283	257	478	403	353
URTH	ISHARES MSCI WORLD ETF	285	247	220	307	241
IDU	ISHARES US UTILITIES ETF	286	192	250	411	491
IDLV	POWERSHARES S&P INTERNATIONAL DE ETF	287	329	325	299	483
EWS	ISHARES MSCI SINGAPORE ETF	288	254	162	186	274
DSI	ISHARES MSCI KLD 400 SOCIAL INDX ETF	289	261	282	272	225
TOK	iShares MSCI Korusai ETF	290	267	222	351	270
RZG	GUGGENHEIM S&P SMALLCAP 600 GR ETF	291	453	497	217	166
PRN	PWRSHRS DWA INDUSTRIALS MNTM ETF	292	381	302	261	212
PUI	PWRSHRS DWA UTILITIES MNTM ETF	292	232	303	305	437
IWV	ISHARES RUSSELL 3000 ETF	294	294	262	253	218
IYY	ISHARES DOW JONES US ETF	295	259	241	233	221
MORT	VANECK VCTR MRTGAG REIT INCM ETF	296	282	430	406	550

The Lyons Share

ITOT	ISHARES TOTAL US STOCK MARKET ETF	297	263	236	236	204
THRK	SPDR RUSSELL 3000 ETF	297	325	265	193	210
MVV	PROSHARES ULTRA MIDCAP 400 ETF	299	427	195	151	59
CHAU	DIREXION DLY CSI 300 CHNA 2X SHS ETF	300	276	351	361	423
NORW	GLOBAL X MSCI NORWAY ETF	300	280	263	295	321
MLPN	CREDIT SUS X LKS CHG MLP INFR ETN	302	259	284	254	330
DXJS	WISDOMTREE JAPAN HEDGED SC EQUITY ETF	303	200	228	153	184
IYJ	ISHARES US INDUSTRIALS ETF	303	287	177	235	95
THD	ISHARES MSCI THAILAND CAPPED ETF	305	394	392	545	484
KLD	ISHARES MSCI USA ESG SELECT ETF	306	285	304	284	359
HEZU	ISHARES CRRNCY HDG MSCI EURZN ETF	307	240	281	343	349
USMV	ISHARES EDGE MSCI MIN VOL USA ETF	308	274	296	383	393
IXJ	ISHARES GLOBAL HEALTHCARE ETF	309	296	466	530	417
VTI	VANGUARD TOTAL STOCK MARKET ETF	309	305	244	248	228
FXH	FIRST TRUST HEALTH CARE ALPHADEX ETF	311	315	519	456	392
PTNQ	PACER TRENDPILOT 100 ETF	312	262	322	267	272
BZF	WISDOMTREE BRAZILIAN REAL STR ETF	313	299	401	365	508
ENOR	ISHARES MSCI NORWAY CAP MKET ETF	313	292	207	301	315
SCHB	SCHWAB US BROAD MARKET ETF	313	289	236	244	212
PSP	POWRSHS GLBL LISTED PRIVATE EQTY ETF	316	302	266	118	122
EPP	ISHARES MSCI PACIFIC EX JAPAN ETF	317	386	217	451	449
IBB	ISHARES NASDAQ BIOTECHNOLOGY ETF	317	359	697	567	385
IDV	ISHARES INTERNATIONAL SEL DIV ETF	317	300	190	411	366
EUSC	WISDOMTREE EUR HDGD SMLCP EQT ETF	320	246	252	281	292
DRN	DIREXION DAILY REAL EST BULL 3X ETF	321	318	333	477	380
EBND	SPDR BLMBRG BRCLY EMG MKT LCL ETF	322	317	459	424	606
IPFF	ISHARES INTERNATIONAL PRF ETF	322	332	252	544	398
EFAD	PROSHARES MSCI EAFE DVD GRWRS ETF	324	360	396	483	453
DBEZ	DEUTSCH X TRCKR MSCI EUR HDG EQY ETF	325	234	214	303	335
DTH	WISDOMTREE INTERNATIONAL HGH DIV ETF	326	270	295	355	410
QUAL	ISHARS EDG MSCI USA QLTY FCTR ETF	327	288	309	356	303
DOL	WISDOMTREE INTL LARGECP DIVIDEND ETF	328	255	319	397	429
LEMB	ISHARES EMERG MRTS LOCAL CUR ETF	328	319	422	471	598
XHB	SPDR S&P HOMEBUILDERS ETF	330	416	329	268	289
CHI	CALAMOS CONVERTIBLE OPPO AND INCM CF	331	362	342	334	252
EWUS	ISHARES MSCI UK SMALL CAP ETF	331	336	289	419	354
FDIS	FIDELITY MSCI CONS DISCR INDX ETF	333	462	345	198	170
FDD	FIRST TRST STOXX EUR SEL DVD INC ETF	334	304	215	382	357
HEWP	ISHARES CURNCY HDG MSCI SPAIN ETF	335	251	251	305	446
VCR	VANGUARD CONSUMER DISCRETIONARY ETF	335	450	336	208	177
XMLV	POWERSHARES S&P MIDCAP LOW VOL ETF	337	309	260	265	232
ALFA	ALPHAclone ALTERNATIVE ALPHA ETF	338	354	385	366	394
SPHQ	POWERSHARES S P 500 QUALITY ETF	339	311	311	287	281
IWO	ISHARES RUSSELL 2000 GROWTH ETF	340	496	578	427	275
KXI	ISHARES GLOBAL CONSUMER STAP ETF	341	357	328	456	575
EFAV	ISHARE EDGE MSCI MIN VOL EAFE ETF	342	343	337	502	542
IXG	ISHARES GLOBAL FINANCIALS ETF	343	286	124	159	144
BBC	BIOSHARES BIOTCHNLGY CLNCL TRALS ETF	344	305	333	308	360
HEDJ	WISDOMTREE EUROPE HEDGED EQTY ETF	345	209	309	356	389
IUSG	ISHARES CORE RUSSELL US GROWTH ETF	345	307	346	332	405
FJP	FIRST TRUST JAPAN ALPHADEX ETF	347	346	434	454	536
OEUR	O SHARES FTSE EUROPE QULTY DIVI ETF	348	348	425	472	531
SPLV	POWERSHARES S&P 500 LOW VOLAT ETF	349	309	332	390	397
UGLD	CS VELOCITYSHARES 3X LONG GOLD ETN	350	417	629	551	762
AOR	ISHARES CORE GROWTH ALLOCATION ETF	351	367	442	434	455
CWB	SPDR BLMBERG BRCLY CONV SECR ETF	352	345	542	479	496
IYK	ISHARES US CONSUMER GOODS ETF	353	378	357	408	554
GXG	GLOBAL X MSCI COLOMBIA ETF	354	316	306	400	583
NFRA	FLEXSHAR STX GLOBAL BROAD INF ETF	355	338	323	455	490
FKU	FIRST TRUST UK ALPHADEX ETF	356	352	299	439	404
IPAC	ISHARES CORE MSCI PACIFIC ETF	356	329	346	437	447
PBE	POWERSHARES BIOTECHNOLOGY GENOME ETF	358	399	668	575	408

The Lyons Share

DEF	GUGGENHEIM DEFENSIVE EQUITY ETF	359	366	348	420	402
DWX	SPDR S&P INTERNATIONAL DIVIDEND ETF	360	356	373	314	497
EEMV	ISHR EDG MSCI MIN VOL EMG MKT ETF	361	379	388	463	565
XLY	SPDR FUND CONSUMER DISCRE SELECT ETF	362	444	339	199	191
FXO	FIRST TRUST FINANCIALS ALPHADEX ETF	363	372	171	168	125
VIG	VANGUARD DIVIDEND APPRECIATION ETF	364	347	270	335	344
CDC	VICTORY CEMP US EQ INCM EHNCD ETF	365	376	356	388	363
EFV	ISHARES MSCI EAFE VALUE ETF	366	322	230	358	398
XLI	SELECT SECTOR INDUSTRIAL SPDR ETF	367	331	203	169	69
DOO	WISDOM TREE INTERNA DVD EX FINAN ETF	368	334	400	512	521
KIE	SPDR S&P INSURANCE ETF	368	314	142	128	56
ULE	PROSHARES ULTRA EURO ETF	370	395	453	467	664
CHY	CALAMOS CONVERTIBLE AND HIGH INC CF	371	463	438	512	368
HAO	GUGGENHEIM CHINA SMALL CAP ETF	371	389	429	446	502
DLN	WISDOMTREE LARGE CAP DIVIDEND ETF	373	342	376	379	351
BFOR	BARRONS 400 ETF	374	514	445	275	196
INTF	ISHARES MSCI MLTFCR INTL ETF	374	340	382	389	474
RYU	GUGGENHEIM S&P 500 EQUAL WEI UTI ETF	376	284	364	366	525
KLDW	GAVEKAL KNWLDG LEADR DVLP WRLD ETF	377	355	440	427	486
VBK	VANGUARD SMALL CAP GROWTH ETF	378	478	530	429	297
ACWV	ISHARES EDGE MSCI MIN VOL GLBL ETF	379	364	378	511	539
RXI	ISHARES GLOBAL CONSUMER DISCRE ETF	379	411	341	313	294
DXGE	WISDOMTREE GERMANY HEDGED ETF	381	265	354	435	407
RYF	GUGGENHEIM S&P 500 EQUAL WEI FIN ETF	381	351	100	93	54
IYM	ISHARES US BASIC MATERIALS ETF	383	335	241	201	331
XT	ISHARES EXPONENTIAL TECHNOLOGIES ETF	383	341	383	353	433
IJK	ISHARES S&P MID CAP 400 GRWTH ETF	385	433	379	314	250
ADRD	BLDRS DEVELOPED MARKETS 100 ADR ETF	386	375	377	372	425
DGP	DB GOLD DOUBLE LONG ETN	387	472	649	613	798
GAL	SPDR SSGA GLOBAL ALLOCATION ETF	388	381	498	533	500
PWV	POWERSHARES DYNAMIC LARGE CAP ETF	389	415	351	188	197
RFG	GUGGENHEIM S&P MIDCAP 400 PURE ETF	390	465	474	283	329
MOO	VANECK VECTORS AGRIBUSINESS ETF	391	412	381	362	431
FMAT	FIDELITY MSCI MATERIALS INDX ETF	392	403	317	205	322
DBAW	DEUT X TRK MSCI AL WLD EX US HDG ETF	393	323	317	363	387
IYF	ISHARES US FINANCIALS ETF	394	343	195	200	156
UGL	PROSHARES ULTRA GOLD ETF	395	476	663	607	792
IVOG	VANGUARD S&P MID CAP 400 GROWTH ETF	396	431	398	339	264
DBGR	DEUTSH X TRKS MSCI GRMNY HDG EQY ETF	397	321	343	493	435
VO	VANGUARD MID CAP ETF	398	402	414	398	326
FIDU	FIDELITY MSCI INDUSTRIALS INDX ETF	399	436	249	279	112
DVP	DEEP VALUE ETF	400	408	403	192	135
MDYG	SPDR S&P 400 MID CAP GROWTH ETF	400	466	411	292	287
HEWG	ISHARES CURRENCY HEDGED MSCI GER ETF	402	368	405	396	480
TILT	FLEXSHARES MORNINGSTAR US IDX ETF	402	517	367	354	266
VAW	VANGUARD MATERIALS ETF	404	383	301	264	328
EZY	WISDOMTREE LARGE CAP VALUE ETF	405	333	273	222	173
IYG	ISHARES US FINANCIAL SER ETF	405	372	178	154	149
RWL	OPPENHEIMER REV WGHTE LRG CP ETF	407	460	415	316	299
RSP	GUGGENHEIM S&P 500 EQUAL WEIGHT ETF	408	444	406	326	285
VNQI	VANGUARD GLBAL EX US REAL ESTATE ETF	409	374	372	461	576
IBND	SPDR BLMBRG BARCLY INTL CRP ETF	410	441	501	522	633
DTD	WISDOMTREE TOTAL DIVIDEND ETF	411	391	393	464	367
EPU	ISHARES MSCI ALL PERU CAPPED ETF	412	409	476	488	583
IWR	ISHARES RUSSELL MID CAP ETF	413	477	462	459	333
XLB	SPDR FUND MATERIALS SELECT SECTR ETF	413	358	299	212	388
AFTY	CSOP FTSE CHINA A50 ETF	415	406	485	422	549
EWA	ISHARES MSCI AUSTRALIA ETF	416	537	227	647	522
WDIV	SPDR S&P GLOBAL DIVIDEND ETF	417	396	435	405	522
XLF	SELECT STR FINANCIAL SELECT SPDR ETF	418	376	154	100	108
AOM	ISHARES CORE MODERATE ALLOCATIN ETF	419	418	518	524	531
IAI	ISHRS US BRKR DEALRS SCURTS EXCH ETF	419	361	182	161	123

The Lyons Share

REM	ISHARES MORT REAL ESTATE CAP ETF	421	313	371	499	561
IYC	ISHARES US CONSUMER SERVICES ETF	422	492	374	261	205
VXF	VANGUARD EXTENDED MARKET ETF	422	542	511	452	268
CEW	WISDOMTREE EMERGING CUNCY STR ETF	424	405	529	583	609
SCHM	CHARLES SCHWAB US MC ETF	425	483	412	399	258
FVD	FIRST TRUST VALUE DIVIDEND INDEX ETF	426	398	330	447	376
GUR	SPDR S&P EMERGING EUROPE ETF	427	384	421	391	489
WBIG	WBI TACTICAL LCV ETF	427	362	367	330	248
EMLC	VANECK VCTR J P MORG N LCL BND ETF	429	429	565	584	698
FIW	FIRST TRUST ISE WATER INDEX ETF	430	533	243	347	132
TDIV	FIRST TR NASDAQ TECH DIV IDX ETF	431	387	513	448	428
CUBA	HERZFELD CARIBBEAN BASIN CF	432	420	349	323	421
RDVY	FIRST TRST NASDAQ RSNG DVD ACHVS ETF	432	413	259	138	67
DEW	WISDOMTREE GLOBAL HIGH DIVI ETF	434	401	499	575	512
VLUE	ISHARES EDG MSCI USA VAL FCTR ETF	434	438	426	266	260
VFH	VANGUARD FINANCIALS ETF	436	419	157	141	119
HEFA	ISHARES CURRENCY HEDG MSCI EAFE ETF	437	384	419	459	416
VIS	VANGUARD INDUSTRIALS ETF	438	443	269	302	106
RTM	GUGGENHEIM S&P 500 EQUAL WEI MAT ETF	439	388	363	195	301
KOL	VANECK VECTORS COAL ETF	440	425	416	501	395
IJT	ISHARES S&P SMLL CAP 600 GRTH ETF	441	397	447	430	487
TAN	GUGGENHEIM SOLAR ETF	442	426	476	476	650
LVL	GUGGENHEIM S&P GLBL DVD OPPTS IDX ETF	443	404	446	491	488
EWU	ISHARES MSCI UNITED KINGDOME ETF	444	484	385	572	457
CCD	CALAMOS DYNAMIC CONVERTIBLE CF	445	400	467	532	495
RGI	GUGGENHEIM S&P 500 EQUAL WEIGHT ETF	446	533	275	248	105
FXZ	FIRST TRUST MATERIALS ALPHADEX ETF	447	593	433	417	348
GNR	SPDR S&P GLOBAL NATURAL RESOURCS ETF	448	485	428	329	459
PHO	POWERSHARES WATER RESC PORTFOLIO ETF	449	522	408	480	268
WBI	WBI TACTICAL LCV ETF	450	353	385	269	152
DBEF	DEUTSCH X TRKS MSCI EAFE HDG EQY ETF	451	350	333	415	374
EQAL	POWERSHARES RSSL 1000 EQL WT ETF	452	548	524	542	552
KCE	SPDR S&P CAPITAL MARKETS ETF	453	431	326	205	209
WBIL	WBI TACTICAL LCS ETF	454	369	293	239	155
ELD	WISDOMTREE EMERGING MKT LOCAL ETF	455	424	564	607	689
FNCL	FIDELITY MSCI FINANCIALS INDX ETF	456	439	164	122	121
NGE	GLOBAL X MSCI NIGERIA ETF	457	499	493	600	707
PICB	POWERSHARES INTL CORPORATE BOND ETF	458	490	533	562	645
SCHD	SCHWAB US DIVIDEND EQUITY ETF	459	442	390	485	445
ASHR	DET X TRK HRV T CSI 300 CHN CL A ETF	460	435	545	426	613
EWJ	ISHARES MSCI JAPAN ETF	460	392	489	504	505
NOBL	PROSHARES S&P 500 DIV ARISTOCRAT ETF	462	458	404	477	478
SCHV	SCHWAB US LARGE CAP VALUE ETF	462	457	339	441	398
FV	FIRST DORSEY WRIGHT FOCUS 5 ETF	464	407	467	401	460
FXA	GUGGENHEIM CURRENCY AUS DOLLAR ETF	464	560	454	654	663
PID	POWERSHARES INTL DVDND ACHVRS ETF	466	519	528	507	545
VYM	VANGUARD HIGH DIVIDEND YIELD ETF	467	471	390	517	453
JKG	ISHARES MORNINGSTAR MID CAP ETF	468	469	420	435	357
PFM	POWERSHARES DIVIDEND ACHIEVERS ETF	469	437	451	410	466
WIP	SPDR CITI INTL GOV INFL PRTC BND ETF	470	440	580	546	676
FGD	FST TST DOW JNS GLBL SEL DVD IDX ETF	471	454	321	556	473
SLX	VANECK VECTORS STEEL ETF	472	610	294	258	164
PSCU	POWERSHARES S&P SMALL UTILI PORT ETF	473	339	384	372	286
TWOK	SPDR RUSSELL 2000 ETF	474	660	626	555	333
AOK	ISHARES CORE CONSERVATIVE ALLOC ETF	475	495	575	592	588
CEFL	UBS ETRACS MONTH PAY 2XLEV CEF ETN	476	545	507	527	378
QDEF	FLEXSHARES DEF QUAL DIV ETF	477	489	443	554	423
FXE	GUGGENHEIM CURRENCYSHARES EURO ETF	478	480	542	570	674
HFXI	IQ 50 PERCENT HEDGED FTSE INTER ETF	479	423	462	486	528
IAU	ISHARES GOLD ETF	480	510	641	661	779
SGOL	ETFS GOLD TRUST ETF	480	525	643	665	781
IYLD	ISHARES MORN MLTI ASS INC IND ETF	482	511	599	625	625

The Lyons Share

IHY	VANECK VECTORS INTL HG YLD BOND ETF	483	486	535	514	570
EIDO	ISHARES MSCI INDONESIA ETF	484	430	437	537	640
PKW	POWERSHARES BUYBACK ACHIEVERS ETF	485	558	520	385	291
FNDX	SCHWAB FUNDAMENTAL US LARGE CO ETF	486	507	462	448	408
PKB	POWERSHARES DYNAMIC BLDG CONSTRN ETF	487	690	501	381	224
SLYG	SPDR S&P 600 SMALL CAP GROWTH ETF	487	634	570	433	312
FXU	FIRST TRUST UTILITIES ALPHADEX ETF	489	413	412	597	538
IWM	ISHARES RUSSELL 2000 ETF	490	653	612	553	382
OUNZ	VANECK MERK GOLD ETF	491	519	646	660	784
IAK	ISHARES US INSURANCE ETF	492	421	159	216	90
MGV	VANGUARD MEGA CAP VALUE ETF	493	450	379	444	380
XLP	SPDR FUND CONSUMER STAPLES ETF	493	460	462	437	630
GLD	SPDR GOLD SHARES ETF	495	513	644	667	782
LRGF	ISHARES EDGE MSCI MLTFCTR USA ETF	495	444	452	443	390
PTLC	PACER TRENDPILOT 750 ETF	497	454	492	474	479
PEK	VANECK VCTR CHINAAMC CSI 300 ETF	498	466	538	432	586
FSTA	FIDELITY MSCI CONS STPLS INDX ETF	499	468	488	448	628
VTWO	VANGUARD RUSSELL 2000 ETF	500	637	616	551	363
VTV	VANGUARD VALUE ETF	501	486	343	425	374
GLTR	ETFS PHYSICAL PRECIOUS MTL BSKT ETF	502	550	622	634	754
XRLV	PWRSHAR S&P 500 EX RAT SEN LW VL ETF	503	475	496	529	516
FNDB	SCHWAB FUNDAMENTAL US BROAD MKT ETF	504	543	483	492	410
IDX	VANECK VECTR INDONESIA INDEX ETF	504	428	449	571	647
HACK	ETF MANG PUREFUNDS ISE CYBER SEC ETF	506	565	714	674	620
PBS	POWERSHARES DYNAMIC MEDIA ETF	506	613	549	481	498
IUSV	ISHARES CORE RUSSELL US VALUE ETF	508	448	500	496	546
VB	VANGUARD SMALL CAP ETF	509	632	537	514	356
WPS	ISHARES INTERNATIONAL DEV PRTY ETF	510	464	416	569	621
PSAU	PWRSHS GLOBAL GOLD & PREC MET ETF	511	507	640	483	907
GUNR	FLEXSHARES UPSTREAM NATURAL IDX ETF	512	531	481	494	543
PHYS	SPROTT PHYSICAL GOLD ETV UNT	513	527	659	698	787
EZM	WISDOMTREE MIDCAP EARNINGS ETF	514	617	509	453	337
ICLN	ISHARES GLOBAL CLEAN ENERGY ETF	515	514	471	549	674
PSCC	POWERSHARES S&P CONS STAP PORT ETF	516	716	701	566	619
IWC	ISHARES MICRO CAP ETF	517	720	657	619	379
VDC	VANGUARD CONSUMER STAPLES ETF	518	474	487	506	636
FCOM	FIDELITY MSCI TELECOM SERV INDX ETF	519	456	482	383	347
VOE	VANGUARD MID CAP VALUE ETF	520	528	422	445	362
GDXX	PROSHARES ULTRA GOLD MINERS ETF	521	599	725	577	888
PEZ	PWRSHRS DWA CONSMR CYCLS MNTM ETF	522	620	547	482	499
DVY	ISHARES SELECT DIVIDEND ETF	523	482	532	520	564
PRF	POWERSHARE FTSE RAFI US 1000 POR ETF	524	530	485	392	361
MDY	SPDR S&P MIDCAP 400 ETF	525	603	483	394	298
DGL	POWERSHARES DB GOLD ETF	526	556	686	692	802
CIBR	FIRST TRUST NASDAQ CYBRSCRTY ETF	527	550	616	610	582
FDL	FIRST TRUST MORNINGSTAR DIV LDRS ETF	528	494	424	584	526
SCHA	SCHWAB US SMALL CAP ETF	529	657	595	546	413
USLV	CS VELOCITYSHARES 3X LONG SILVER ETN	529	894	815	593	963
PHDG	POWERSHS SP 500 DWNDE HEDGED ETF	531	459	527	458	572
GHYG	ISHARES GLOBAL HIGH CORP BOND ETF	532	581	522	582	558
BWZ	SPDR BLMBRG BARCLY SH TM INTL ETF	533	516	604	646	749
IVOO	VANGUARD S&P MID CAP 400 ETF	533	583	480	431	315
JETS	US GLOBAL JETS ETF	535	422	470	243	245
DVYA	ISHARES ASIA/PACIFIC DIVIDEND ETF	536	575	370	578	571
QVAL	VALUESHARES U S QUANTITATIVE VAL ETF	536	693	590	538	540
VIOO	VANGUARD S&P SMALL CAP 600 ETF	536	736	558	517	326
IGN	ISHARES NORTH AMERICAN TECH ETF	539	447	659	656	463
BWX	SPDR BLMBRG BRCLY INTL TRSRY ETF	540	541	636	712	790
FXR	FIRST TR INDL PROD DRBL ALPHADEX ETF	541	538	308	215	84
GDX	VANECK VECTORS GOLD MINERS ETF	541	532	638	500	899
IJH	ISHARES CORE S&P MID CAP ETF	541	598	472	441	317
QDF	FLEXSHARES QUAL DIV ETF	544	533	474	565	433

The Lyons Share

FTLS	FIRST TRUST LONG SHORT EQUITY ETF	545	488	571	469	349
DBP	POWERSHARES DB PRECIOUS METALS ETF	546	595	696	702	852
REZ	ISHARES RESI REAL ESTATE CAP ETF	547	470	531	683	635
GQRE	FLEXSHARES GLB QULY REAL EST IDX ETF	548	481	450	586	605
SCIU	GLOBAL X SCIENTIFIC BETA US ETF	548	497	545	564	553
OUSA	O SHARES FTSE US QUALITY DIV ETF	550	498	551	587	592
FAN	FIRST TRUST GLOBAL WIND ENERGY ETF	551	564	358	558	655
PCEF	POWERSHARES CEF INC COMPOSITE PF ETF	552	562	557	525	535
RHS	GUGGENHEIM S&P 500 EQUAL WE CONS ETF	553	501	521	519	659
HAP	VANECK VECTORS NATURAL RESRCS ETF	554	631	526	526	560
IJR	ISHARES CORE S&P SMALL CAP ETF	555	731	573	521	339
SDIV	GLOBAL X SUPERDIVIDEND ETF	556	605	609	685	616
AGQ	PROSHARES ULTRA SILVER ETF	557	860	773	687	958
PTMC	PACER TRENDPILOT 450 ETF	558	518	539	508	472
IWD	ISHARES RUSSELL 1000 VALUE ETF	559	624	495	556	493
JKF	ISHARES MRNSTAR LARGE CAP VAL ETF	560	589	438	533	513
PJP	POWERSHARES DYNAMIC PHARMACALS ETF	561	526	781	677	617
CVY	GUGGENHEIM MULTI ASSET INCOME ETF	562	585	654	675	544
HYD	VANECK VECTR HG YLD MCPL INDX ETF	563	599	690	810	952
PRFZ	PWRSHS FTSE RAFI US 1500 SML MID ETF	564	683	622	503	384
VUSE	VIDENT CORE US EQUITY ETF	564	674	579	413	401
CYB	WISDOMTREE CHINESE YUAN STRAY ETF	566	500	588	589	668
IWX	ISHARES RUSSELL TOP 200 VALUE ETF	567	554	461	550	510
XSLV	POWERSHARES S&P SMALLCAP LOW VOL ETF	567	711	512	523	284
IGOV	ISHARES INTERNATIONAL TRSRY BND ETF	569	578	656	773	803
SCO	PROSHARES ULTRST BLOM CRUDE ETF	569	490	948	954	978
VOOV	VANGUARD S&P 500 VALUE ETF	571	522	441	488	436
TMF	DIR DAILY 20+ YEAR TRSRY BULL 3X ETF	572	519	798	720	809
SIVR	ETF SILVER TRUST ETF	573	773	735	712	927
EWC	ISHARES MSCI CANADA ETF	574	582	504	541	568
JPN	DUTSCH X TRCK JAP JPX NIK 400 EQ ETF	575	512	573	590	623
FUND	SPROTT FOCUS TRUST ORD	576	596	607	345	515
GRES	INDEXIQ GLOBAL RESOURCES ETF	577	607	671	624	690
IHE	ISHARES US PHARMACEUTICALS ETF	578	543	791	770	541
SDY	SPDR S&P DIVIDEND ETF	579	568	505	528	519
FPE	FIRST TRUST PREFERRED SEC INCOME ETF	580	522	550	626	615
SLV	ISHARES SILVER TRUST ETF	580	783	737	721	929
EMHY	ISHARES EMERGING MARKETS HIGH ETF	582	591	628	675	699
SYLD	CAMBRIA SHAREHOLDER YIELD ETF	583	594	494	418	311
IVE	ISHARES S&P 500 VALUE ETF	584	539	443	487	442
VVOB	VANGUARD EMERGING MKT GOVT BND ETF	584	570	634	678	723
HEWJ	ISHARES CURRENCY HEDGED MSCI JAP ETF	586	450	460	371	331
RSX	VANECK VECTORS RUSSIA ETF	586	621	582	623	470
HDV	ISHARES CORE HIGH DIVIDEND ETF	588	493	517	635	610
IYR	ISHARES US REAL ESTATE ETF	589	529	555	640	612
HEWI	ISHARES CURRENCY HDGD MSCI ITLY ETF	590	831	855	877	861
DXPS	WISDOMTREE UNITED KINGDOM HEG EQ ETF	591	390	554	663	590
CDL	VICTORY CEMP US LG CAP HIGH DIV ETF	592	540	566	580	591
DXJ	WISDOMTREE JAPAN HEDGED EQUITY ETF	593	434	436	322	320
XTN	SPDR S&P TRANSPORTATION ETF	594	723	561	379	421
MLN	VANCK VCTR AMT FREE LNG MCPL ETF	595	646	787	844	966
URA	GLOBAL X URANIUM ETF	596	269	234	469	470
QAI	IQ HEDGE MULTI-STRATEGY TRACKER ETF	597	580	651	643	653
HDLV	UBS ETRACS PAY 2X US HG DIV LOW ETN	598	473	515	637	601
DBEU	DEUTSCH X TRKS MSCI ERP HDG EQY ETF	599	502	553	682	530
EES	WISDOMTREE SMALLCAP EARNINGS ETF	600	740	572	465	278
KCNY	KRANESHARES E CHN CMRCL PPR ETF	601	567	597	616	707
ANGL	VANECK VCTR FALN ANGL HY BND ETF	602	682	608	690	547
SRET	GLOBAL X SUPERDIVIDEND REIT ETF	603	579	611	611	665
WBIE	WBI TACTICAL LCG ETF	604	509	508	490	377
FNDA	SCHWAB FUNDAMENTAL US SMALL COM ETF	605	741	612	587	417
IWS	ISHARES RUSSELL MID CAP VALUE ETF	605	663	534	601	448

VONV	VANGUARD RUSSELL 1000 VALUE ETF	605	565	505	536	484
NUGT	DRXN DLY GLD MNS INX BL 3X ETF	608	638	751	472	967
PCY	POWERSHARES EMRG MKTS SOVRGN DBT ETF	609	533	653	657	791
MNA	INDEXIQ MERGER ARBITRAGE ETF	610	574	684	505	514
VCLT	VANGUARD LONG TERM COR BD ETF	611	583	684	734	721
QYLD	RECON CAPITAL NAS 100 CVRD CAL ETF	612	577	600	573	589
DBJP	DEUTSCH X TRK MSCI JPN HDG EQY ETF	613	479	432	394	385
DON	WISDOMTREE MIDCAP DIVIDEND ETF	614	660	548	662	468
CLY	ISHARES 10+ YEAR CREDIT BOND ETF	615	573	679	728	725
VRP	POWERSHARES VARIABLE RATE PRF ETF	615	545	614	605	603
UBT	PROSHARES ULTRA 20+ YR TREASURY ETF	617	576	752	807	849
DBS	POWERSHARES DB SILVER ETF	618	825	771	752	955
PSLV	SPROTT PHYSICAL SILVER CF	619	816	746	727	947
IFGL	ISHARES INTERNATIONAL DEV RL EST ETF	620	553	491	669	715
SPHD	PWRSHARS S P 500 GHG DIV LW VLTU ETF	621	503	552	560	527
ILTB	ISHARES CORE 10 YEAR USD BOND ETF	622	615	708	767	789
FXG	FIRST TR CONSUMR STAPLS ALPHADEX ETF	623	609	586	612	722
DHS	WISDOMTREE HIGH DIVIDEND ETF	624	547	561	641	587
SGDM	SPROTT GOLD MINERS ETF	624	572	739	509	905
FXD	FIRST TR CONS DSCRTNRY ALPHADEX ETF	626	782	621	598	581
UAE	ISHARES MSCI UAE CAPPED ETF	627	379	479	467	614
FXC	GUGGENHEIM CURR CANADIAN DOLLAR ETF	628	617	556	650	660
FREL	FIDELITY MSCI REAL ESTATE INDEX ETF	629	596	630	629	644
EWM	ISHARES MSCI MALAYSIA ETF	630	554	541	632	800
RPV	GUGGENHEIM S&P 500 PURE VALUE ETF	631	614	467	366	371
PYZ	PWRSHRS DWA BSC MTRLS MNTM ETF	632	710	542	539	467
RVNU	DEUT X TRK MNCPL INFRSTRCTR RVNE ETF	632	642	809	819	950
LWC	SPDR BLMBRG BRCLY LNG TRM CRP ETF	634	557	740	710	714
YYY	YIELDSHARES HIGH INCOME ETF	635	552	592	618	596
DIV	GLOBAL X SUPERDIVIDEND US ETF	636	621	648	689	671
RWK	OPPNHMR REVN WGHTD MD CP ETF	637	704	624	535	417
XMPT	VANECK VECTORS CEF MNCPL INCM ETF	638	602	658	731	801
RYJ	GUGGENHEIM RYMD JAMES SB-1 EQTY ETF	639	799	690	630	477
SLY	SPDR S&P 600 SMALL CAP ETF	640	796	693	548	503
DTN	WISDOM TREE DIVIDEND EX FINAN ETF	641	610	631	726	577
IAT	ISHARES US REGIONAL BANKS ETF	641	591	297	287	194
EIS	ISHARES MSCI ISRAEL CAPPED ETF	643	588	680	709	688
EMCB	WISDOMTREE EMERG MKTS CORP BOND ETF	644	549	639	652	669
VBR	VANGUARD SMALL CAP VALUE ETF	645	738	576	599	432
WBIH	WBI TACTICAL HIGH INCOME ETF	646	673	742	742	624
TUR	ISHARES MSCI TURKEY ETF	647	601	633	633	694
CMF	ISHARES CALIFORNIA MUNI BOND ETF	648	679	779	796	888
VNM	VANECK VECTORS VIETNAM ETF	649	656	702	708	730
ITM	VANCK VCTR AMT FR INTMDT MCPL ETF	650	626	788	794	936
JJN	BARCLAYS BK IPATH BLOOM NICKEL ETN	651	797	620	947	701
TTFS	ADVISORSHARES WILSHIRE BUYBACK ETF	652	718	566	514	391
PBP	POWERSHARES S&P 500 BUYWRITE ETF	653	635	595	494	572
ICF	ISHARES COHEN AND STEERS REIT ETF	654	587	589	735	641
FXF	GUGGENHEIM CURRENCY SWISS FRANC ETF	655	625	693	705	765
IJS	ISHARES S&P SMALL CAP 600 ETF	656	808	614	620	427
HYG	ISHARES IBOXX HIGH YIELD BOND ETF	657	725	736	724	638
BLV	VANGUARD LONG TERM BOND ETF	658	636	765	814	806
ZROZ	PIMCO 25YR ZERO CUPN US TRS INDX ETF	659	608	857	828	864
FMB	FIRST TRUST MANAGED MUNICIPAL ETF	660	689	769	841	940
RWO	SPDR DOW JONE GLOBAL REAL ESTATE ETF	660	606	601	636	662
RTH	VANECK VECTORS RETAIL ETF	662	762	569	543	557
KBE	SPDR S&P BANK ETF	663	623	353	324	243
HYEM	VNECK VCTR EMRG MKT HG YLD BOND ETF	664	687	719	667	751
PWZ	POWERSH CALIFOR AMT FRE MUNI BND ETF	664	641	713	719	918
PZA	POWERSHARE NATL AMT FRE MUNI BND ETF	664	671	781	772	921
ILB	PIMCO GLOBAL ADVANTAGE INFL ACTV ETF	667	619	637	643	670
IXP	ISHARES GLOBAL TELECOM ETF	668	560	524	655	700

RCD	GUGGENHEIM S&P 500 EQUAL WEI CON ETF	669	820	697	617	608
GGOV	PROSHARES GERMAN SUB SOVEREIGN ETF	670	628	654	670	778
AIRR	FT RBA AMERICAN IND RENAISSANCE ETF	671	744	560	509	310
MUB	ISHARES NATIONAL MUNI BOND ETF	672	664	816	812	915
RLY	SPDR SSGA MULTI ASSET REAL RETUR ETF	673	701	710	684	656
FXB	GUGGE CUR BRITISH POUND STERLING ETF	674	720	642	739	672
CORP	PIMCO INVEST GRADE CORP BND IDX ETF	675	638	704	795	757
WBII	WBI TACTICAL INCOME ETF	676	612	725	695	694
LQD	ISHARES IBOX INVNT GRADE BOND ETF	677	645	765	803	758
JNK	SPDR BLMBRG BRCLY GHG YLD BND ETF	678	715	749	724	643
SMLV	SPDR RUSSELL 2000 LOW VOLATILITY ETF	678	809	605	622	465
PGF	POWERSHARES FINANCIAL PREFERRED ETF	680	615	650	645	705
TUTT	TUTTLE MANAGEMENT U.S. CORE ETF	680	630	647	664	679
SEA	GUGGENHEIM SHIPPING ETF	682	570	523	530	563
TFI	SPDR NUVEEN BLMBRG BRCLY MNCP ETF	683	685	840	830	951
DSUM	POWERSHARES CHINESE YUAN DIM SUM ETF	684	649	669	697	744
XPH	SPDR S&P PHARMACEUTICALS ETF	684	640	838	858	666
TICC	TICC CAPITAL ORD	686	449	232	183	518
REET	ISHARES GLOBAL REIT ETF	687	662	581	791	710
IWN	ISHARES RUSSELL 2000 VALUE ETF	688	789	624	604	463
BOND	PIMCO TOTAL RETURN ACTIVE ETF	689	659	794	776	784
PFXF	VANCK VECTR PRF SECTR EX FNCL ETF	690	633	692	714	726
PGX	POWERSHARES PREFERRED PORTFOLIO ETF	690	604	659	639	727
VNQ	VANGUARD REIT ETF	690	651	587	730	651
DIVY	REALITY SHARES DIVS ETF	693	590	540	497	592
IVOV	VANGUARD S&P MID CAP 400 VALUE ETF	693	770	563	601	442
SCHH	CHARLES SCHWAB US REIT ETF	695	643	598	746	646
HYS	PIMCO 0-5 YEAR HIGH YLD BND IDX ETF	696	768	780	743	639
UGA	UNITED STATES GASOLINE ETF	697	904	705	651	579
PSCF	POWERSHARES S&P SMALL FINAN PORT ETF	698	756	513	540	303
FRI	FIRST TRUST S&P REIT INDEX ETF	699	647	593	736	649
KRE	SPDR S&P REGIONAL BANKING ETF	700	644	407	364	249
UST	PROSHARES ULTRA 7-10 YR TREASURY ETF	700	678	807	861	971
IYT	ISHARES TRANSPORTATION AVERAGE ETF	702	705	559	423	406
VCIT	VANGUARD INTERMEDIATE TERM COR ETF	703	695	778	822	804
IJJ	ISHARES S&P MID CAP 400 VALUE ETF	704	729	568	603	439
PEJ	POWERSHARES DYNIC LEISURE & ENTE ETF	705	698	688	497	415
HYMB	SPDR NUVEEN S&P HIGH YIELD MUNI ETF	706	650	789	896	953
AUNZ	WISDOMTREE AUSTRALIA NEW ZEALAND ETF	707	651	665	681	696
SMB	VANCK VCTR AMT FREE MCPL INDX ETF	707	657	810	787	844
RFV	GUGGENHEIM S&P MIDCAP 400 PUE VA ETF	709	774	610	465	308
PEY	POWERSHARES HIGH YIELD DIVIDEND ETF	710	700	594	563	529
BSCO	GUGGENHEIM BLTSHRS 2024 CRPT BND ETF	711	669	800	747	805
VTEB	VANGUARD MUNI BND TAX EXEMPT ETF	711	676	727	744	775
MDYV	SPDR S&P 400 MID CAP VALUE ETF	713	727	602	594	451
SGDJ	SPROTT JUNIOR GOLD MINERS ETF	714	822	802	614	888
SLYV	SPDR S&P 600 SMALL CAP VALUE ETF	714	807	672	595	494
PSK	SPDR WELLS FARGO PREFERRED STOCK ETF	716	629	718	581	770
TLO	SPDR BLMBRG BRCLY LG TM TRSRY ETF	717	666	848	850	924
BSCN	GUGGENHEIM BLTSHRS 2023 CRPT BND ETF	718	647	750	802	764
SMHD	UBS ETRCS MNLY PY 2XLVGD US SML ETN	719	669	632	596	342
BAL	BARCLAYS BK IPATH BLOOM COTN SUB ETN	720	818	775	694	652
KNOW	DIREXION ALL CAP INSIDER SENTI ETF	721	826	584	671	579
VGLT	VANGUARD LONG TERM GOV BD ETF	721	684	849	863	906
BSCM	GUGGENHEIM BULLET 2022 COR BOND ETF	723	681	786	833	793
XME	SPDR S&P METALS & MINING ETF	723	703	619	319	319
FBND	FIDELITY TOTAL BOND ETF	725	672	812	836	768
BTAL	QUANTSHARES US MARKET NEUTRAL AN ETF	726	667	794	934	938
IBMI	ISHARS IBND SEP 2020 TRM MUN BND ETF	727	679	796	804	850
IBDP	ISHARES IBONDS DEC 2024 TRM ETF	728	691	747	757	748
QLTA	ISHARES AAA A RATED COR BOND ETF	729	731	817	821	797
SHYD	VANECK VCTRS SHT HY MNCL INDEX ETF	729	699	733	880	956

IBDQ	ISHR IBND DEC 2025 TRM ETF	731	697	753	766	752
IBDO	ISHARES IBONDS DEC 2023 TERM ETF	732	694	742	756	746
RWX	SPDR DOW JONES INTER REAL ESTATE ETF	732	686	680	631	766
SPHB	POWERSHARES S&P 500 HIGH BETA ETF	734	726	585	407	346
BAB	POWERSHARES BUILD AMERICA ETF	735	668	821	723	925
EDV	VANGUARD EXTENDED DURATION ETF	736	665	899	820	947
PPLT	ETFS PHYSICAL PLATINUM SHARES ETF	737	569	602	768	724
MUNI	PIMCO INTRMEDIATE MUNI BOND ACTV ETF	738	654	859	827	943
ERUS	ISHARES MSCI RUSSIA CAPPED ETF	739	706	662	738	603
ITR	SPDR BLMBRG BRCLY INTRMDT TRM ETF	739	731	830	834	808
IBDN	ISHARES IBONDS DEC 2022 TERM ETF	741	712	754	776	750
CNXT	VANCK VCTR CHINAAMC SME CHINEXT ETF	742	692	805	797	927
SHM	SPDR NVN BLMBRG BRCLY SHT TM ETF	743	722	803	817	824
BSJK	GUGGENHEIM BULLS 2020 HIGH BOND ETF	744	742	721	769	678
BSJM	GUGG BLTSHS 2022 HGH YLD CPT BND ETF	745	803	711	748	676
RWR	SPDR DOW JONES REIT ETF	745	696	664	693	683
COMT	ISHARES COMMODITIES SELCT STRTGY ETF	747	824	591	615	585
TUTI	TUTTLE TCTCL MNGMT MLT STRGY INC ETF	748	688	706	707	717
IBDM	ISHARES IBONDS DEC 2021 TERM ETF	749	714	745	788	753
DXJF	WISDOMTREE JAPAN HEDGED FNCLS ETF	750	563	490	375	352
BSJJ	GUGGENHEIM BULLS 2019 HIGH BOND ETF	751	735	755	751	685
TLH	ISHARES 10-20 YEAR TSURY BOND ETF	752	709	852	882	940
DES	WISDOMTREE SMALLCAP DIVIDEND ETF	753	840	728	740	567
RWJ	OPPENHEIMER REV WGHTD SMLLCP ETF	753	840	730	680	503
BSJL	GUGG BLTSHS 2021 HGH YLD CRP BND ETF	755	790	764	790	697
RDIV	OPPENHMR REV WGHTD ULTR DIV ETF	756	850	723	749	629
TPYP	TORTOISE NORTH AMERICAN PIPELINE ETF	757	708	682	678	631
FXY	GUGGENHEIM CURRENCY JAPANESE YEN ETF	758	757	926	965	986
PLW	POWERSHARES 1 30 LADDERED TRSURY ETF	759	707	863	856	917
IPW	SPDR SP INTERNA ENERGY SECTOR ETF	760	701	737	753	728
NFLT	NEWFLEET MLT SCTR UNCSND BND ETF	760	737	706	771	741
MDIV	FT MULTI ASSET DIVERSIF INC IDX ETF	762	760	672	702	654
EPHE	ISHARES MSCI PHILIPPINES ETF	763	558	503	568	711
PHB	POWERSHARES FUNDAME H YIELD CORP ETF	763	795	770	741	657
STPP	BARCLAYS BK IPATH US TREAS STEEP ETN	765	586	535	573	594
TIPZ	PIMCO BROAD US TIPS INDEX ETF	766	777	929	816	830
SHYG	ISHARES HIGH YIELD CORPORAT BOND ETF	767	816	804	799	719
ROOF	IQ US REAL ESTATE SMALL CAP ETF	768	730	672	779	626
IPU	SPDR S&P INTL UTILITIES SECTOR ETF	769	713	734	745	742
LTPZ	PIMCO 15+ YEAR US TIPS INDEX ETF	770	717	956	783	812
QABA	FIRST TST NASDAQ ABA COM BK ID ETF	771	774	473	561	430
AGGY	WSDMTR BRCLY US AGRGT BND ENHNC ETF	772	719	781	805	766
HTUS	HULL TACTICAL US ETF	772	677	678	717	693
GYLD	ARROW DOW JONES GLOBAL YIELD ETF	774	758	792	706	761
BIV	VANGUARD INTERMEDIATE TERM BOND ETF	775	788	845	877	937
SLVO	CREDIT SUISSE X LNK SLVR CVR CAL ETN	776	893	903	926	969
PBJ	POWERSHARES DYN FOOD&BEVERAGE ETF	777	835	773	728	762
HYLS	FIRST TRUST TACTICAL HIGH YIELD ETF	778	724	645	715	687
HYLD	PERITUS HIGH YIELD ETF	779	674	687	672	642
TOTL	SPDR DOUBLELINE TTL RTRN TTCL ETF	780	727	784	789	776
GBF	ISHARES GOVT CREDIT BOND ETF	781	755	824	847	859
SDOG	ALPS SECTOR DIVIDEND DOGS ETF	782	753	577	722	618
MLPS	UBS ETRACS LKD TO ALERIAN MLP ETN	783	743	897	910	876
IBDK	ISHARES IBONDS DEC 2019 TERM ETF	784	754	765	784	756
UCI	E TRACS UBS BLOOMBERG CMCI ETN	784	844	583	688	637
SJNK	SPDR BLMBRG BRCLY SHT TRM HGH ETF	786	799	811	785	718
WBLA	WBI TACTICAL SMG ETF	787	793	667	648	536
TIP	ISHARES TIPS BOND ETF	788	794	920	806	843
IBDL	ISHARES IBONDS DEC 2020 TRM ETF	789	780	832	849	823
CMBS	ISHARES CMBS ETF	790	783	865	865	915
BND	VANGUARD TOTAL BOND MARKET ETF	791	786	849	870	880
DWAS	POWERSHARES DWA SMALLCAP MOM ETF	792	745	755	758	731

KBWB	POWERSHARES KBW BANK ETF	792	745	755	758	731
KBWD	POWERSHARES KBW HIGH DVD YLD FNL ETF	792	745	755	758	731
KBWP	PWRSHS KBW PRPRTY & CASUALTY INS ETF	792	745	755	758	731
KBWR	POWERSHARES KBW REGIONAL BANKING ETF	792	745	755	758	731
KBWY	PWRSHS KBW PREM YLD EQTY REIT ETF	792	745	755	758	731
UDF	UNITED DEVELOPMENT IV ORD	792	745	755	758	731
UWTI	VELOCITYSHARES 3X LNG CRD OIL ETN	792	745	755	758	731
BSCL	GUGGENHEIM BULLET 2021 COR BOND ETF	800	763	808	868	810
AGG	ISHARES CORE US AGGREGATE BOND ETF	801	779	845	880	882
IBMH	ISHRS IBND SEP 2019 TRM MUN BND ETF	802	760	822	825	848
ASHS	DET X TRK HRVT CSI 500 CHN CL A ETF	803	776	826	874	909
ARCC	ARES CAPITAL ORD	804	765	776	408	680
TDTF	FLEXSHARES IBOXX 5 YR TIPS IDX ETF	804	851	933	848	873
WBIB	WBI TACTICAL SMV ETF	806	812	700	649	556
FXEU	PWRSHARS EUR CRNCY HD LW VLTLTY ETF	807	771	828	637	835
SUB	ISHARES SHORT TERM NTNL MUN BND ETF	808	792	817	846	840
EMLP	FIRST TRUST NORTH AMERICAN ENERGF ETF	809	837	732	793	673
RIGS	RIVERFRONT STRATEGIC INCOME ETF	810	832	688	754	691
BSCK	GUGGENHEIM BULTSH 2020 CORP BOND ETF	811	769	831	834	799
WBID	WBI TACTICAL SMS ETF	811	804	676	659	554
BIZD	VANECK VECTORS BDC INCOME ETF	813	843	835	800	692
GSC	GS S&P GSCI ENHA COMM RET STRA ETN	814	759	627	628	796
IBDJ	ISHARES IBONDS DEC 2017 TERM ETF	815	778	790	786	744
DVHL	UBS ETRACS PAY 2XLV DIV HIGH INC ETN	816	827	833	755	607
IBDF	ISHARES IBONDS DEC 2016 TRM ETF	817	767	777	778	746
MLPC	CITI C TRACKS MILLER HOWARD MLP ETN	817	791	784	701	631
VCSH	VANGUARD SHORT TERM COR BD ETF	819	806	851	854	812
IPE	SPDR BLOOMBERG BARCLAYS TIPS ETF	820	811	946	832	879
SCHZ	SCHWAB US AGGREGATE BOND ETF	820	766	861	872	892
GOVT	ISHARES US TREASURY BOND ETF	822	780	860	877	918
DGRS	WISDMTRE US SMLCP QLT DIV GRW ETF	823	848	716	750	577
BDCL	UBS LEV LNG SEC LKD WF BUS DEV ETN	824	828	801	779	569
SCHR	SCHWAB INTERMEDIATE TERM US TRS ETF	824	786	872	890	932
GVI	ISHARES INT GOV CREDIT BOND ETF	826	801	862	876	882
IBDC	ISHARES IBONDS MAR 2020 TERM ETF	827	785	901	839	867
PFIG	PWRSHS FUND INV GRD CRP BND ETF	828	771	827	810	814
FTGC	FIRST TRUST GBL TTCL COMDTY STRA ETF	829	905	798	824	777
FLTB	FIDELITY LIMITED TERM BOND ETF	830	763	873	892	830
VGIT	VANGUARD INTERMEDIATE TERM GOV ETF	831	798	870	905	947
IGHG	PROSHARES INVNT GD INT RAT HED ETF	832	855	796	831	712
SCHP	SCHWAB US TIPS ETF	833	805	951	863	903
WBIC	WBI TACTICAL SMY ETF	834	814	768	774	686
BNDX	VANGUARD TOTAL INTERNATIONAL BND ETF	835	821	893	929	892
VOX	VANGUARD TELECOMMUNICATION SERVC ETF	836	738	677	711	634
ITE	SPDR BLMBRG BRCLY INTRMDT TM ETF	837	815	883	914	913
SLVP	ISHARES MSCI GLOBAL SILR MIN ETF	838	846	819	653	956
AGZ	ISHARES AGENCY BOND ETF	839	829	894	892	910
BSJG	GUGGENHEIM BULLETSHARES 2016 ETF	840	809	834	841	788
UNL	UNITED STATES 12 MT NATURAL GAS ETF	840	922	913	591	837
BSJI	GUGGENHEIM BULLETSHARES 2018 ETF	842	839	853	823	760
PXMV	POWERSHARES RSSLL MDCP PR VAL ETF	842	838	722	695	600
GYEN	ADVISORSHARES GARTMAN GOLD YEN ETF	844	877	719	911	898
IYZ	ISHARES US TELECOM ETF	844	731	652	715	622
IBCD	ISHRS IBND MAR 2020 TRM EX FNNCL ETF	846	822	877	855	878
RJI	AB SVENSK ELEMENTS LKD RGR INDEX ETN	847	875	666	704	660
BDCS	UBS E TRACS LKD WLS FRG DEV ETN	848	857	847	851	703
FLTR	VANCK VCTRS INVST GRD FLOTNG ETF	849	842	854	853	794
EMB	ISHARES JPMORGAN USD MTS BOND ETF	850	819	842	852	807
MINC	ADVISORSHARES NEWFLET MUL SEC ETF	851	859	840	907	837
SRLN	SPDR BLACKSTONE GSO SENIOR LOAN ETF	852	833	823	812	768
RING	ISHARES MSCI GLO GOLD MINERS ETF	853	834	858	869	820
BSV	VANGUARD SHORT-TERM BOND ETF	854	856	892	922	899

SCPB	SPDR BLMBRG BARCLY SHT TRM CP ETF	854	852	876	874	832
BSCI	GUGGENHEIM BULTSH 2019 CORP BOND ETF	856	847	886	896	846
SST	SPDR BLMBRG BRCLY SHT TRM TRS ETF	857	854	909	903	908
SVVC	FIRSTHAND TECHNOLOGY VALUE CF	858	844	837	825	704
IBMG	ISHARS IBND SEP 2018 TRM MUN BND ETF	859	836	866	906	864
PFF	ISHARES U.S. PREFERRED STOCK ETF	860	830	856	866	817
STPZ	PIMCO 1-5 YEAR US TIPS INDEX ETF	860	898	920	882	847
MBG	SPDR BLMBRG BRCLY MRTG BKD BD ETF	862	876	955	956	964
DJP	BRCLYS BK IPATH BLOOM COMMODITY ETN	863	932	715	731	729
EGPT	VANECK VECTORS EGYPT INDEX ETF	863	883	942	775	779
TIPX	SPDR BLMBRG BRCLY 1 10 YR TIP ETF	865	813	882	829	871
IMLP	BARCLAYS IPATH SP MLP ETN	866	889	864	807	683
STIP	ISHARES 0-5 YEAR TIPS BOND ETF	867	889	905	871	841
GDXJ	VANECK VECTOR JUNR GOLD MNRS ETF	868	861	744	626	979
AMU	UBS ETRACS ALERIAN MLP INDEX ETN	869	887	886	838	709
TDDT	FLEXSHARES IBOXX 3 YR TIPS IDX ETF	870	917	935	888	874
YMLI	VANCK VCTR HG INCM INFRST MLP ETF	870	897	868	798	680
DJCI	E-TRACS LINKED TO THE BLM COM ETN	872	923	716	737	739
FLRN	SPDR BLMBRG BRCLY INV GR FLTN ETF	872	865	883	885	818
VMBS	VANGUARD MORTGAGE BACKED SEC ETF	874	877	938	953	945
FLOT	ISHARES FLOATING RATE BOND ETF	875	872	878	886	824
MINT	PIMCO ENHANCED SHRT MATURTY ACTV ETF	875	867	878	886	827
SPFF	GLOBAL X SUPERINCOME PREFERRED ETF	875	853	900	940	795
DBC	POWERSHARES DB CMMDTY IDX TRCKNG ETF	878	932	683	717	682
FTSL	FIRST TRUST SENIOR LOAN ETF	879	870	805	856	773
IBDH	ISHARES IBONDS DEC 2018 TRM ETF	879	894	894	919	872
ULST	SPDR SSGA ULTRA SHORT TERM BOND ETF	881	869	883	892	818
AMJ	JP MORGAN CHASE ALERIAN ETN	882	899	888	844	713
BNO	UNITED STATES BRENT OIL ETF	883	909	606	621	507
GSY	GUGGENHEIM SHORT DURATION ETF	884	874	889	888	829
USCI	UNITED STATES COMMODITY INDEX ETF	884	950	898	952	895
CHAD	DIREXION DLY CSI 300 CHN A BR 1X ETF	886	872	881	895	874
WEAT	TEUCRIUM WHEAT ETF	887	916	812	900	855
BSCG	GUGGENHEIM BLLSHS 2016 CORP BND ETF	888	868	875	884	822
GNMA	ISHARES GNMA BOND ETF	889	883	952	960	961
GSG	ISHARES S&P GSCI COMMODITY INDXD ETF	890	923	699	699	657
GSP	BARCLAYS TRAD NTS GSCI TOT RET IDX	891	928	672	666	626
NEAR	ISHARES SHORT MATURITY BOND ETF	891	882	890	898	837
VGSH	VANGUARD SHORT TERM GOVERNMENT ETF	893	921	924	931	884
ATMP	BARCLAYS SELECT MLP ETN	894	906	890	861	706
FTSM	FIRST TRUST ENHANCED SHORT MTRTY ETF	895	880	874	891	832
PGHY	POWERSHS GLOB SHORT TERM HY BOND ETF	895	886	870	792	811
BKLN	POWERSHARES SENIOR LOAN ETF	897	863	842	818	755
RJA	AB SVNK ELEMENTS LKD RGR INDX AGR	897	883	724	860	782
SILJ	ETF MANG PUREFUNDS ISE JUNIR SIL ETF	899	879	842	606	942
VBND	VIDENT CORE US BOND STRATEGY ETF	900	858	839	950	973
VTIP	VANGUARD SHRT INF PROT SEC INDEX ETF	901	912	928	841	862
PVI	POWERSHARES VRDO TAX FREE WEEKLY ETF	902	900	880	908	832
BSCI	GUGGENHEIM BULTSH 2018 CORP BOND ETF	903	864	910	927	858
BSJH	GUGGENHEIM BULLETSHARES 2017 ETF	903	901	902	909	826
DBE	POWERSHARES DB ENERGY ETF	905	936	695	658	602
CRED	ISHARES US CREDIT BOND ETF	906	862	907	924	868
SCHO	SCHWAB SHORT TERM US TREASURY ETF	907	889	920	928	885
HVPW	US EQY HIGH VOLATILITY PW IND ETF	908	865	913	916	887
BIL	SPDR BLMBRG BRCLY 1 3 MNTH T ETF	909	888	903	902	851
RRF	WISDOMTREE GLOBAL REAL RETURN ETF	909	870	918	923	877
SIL	GLOBAL X SILVER MINERS ETF	911	802	919	691	962
AMZA	INFRACAP MLP ETF	912	970	975	966	897
BSCH	GUGGENHEIM BLLSHS 2017 CORP BND ETF	913	892	915	916	854
TUZ	PIMCO 1-3 YEAR US TREASURY ETF	914	903	936	932	892
IBCC	ISHR IBND MAR 2018 TRM EX FNNCL ETF	915	896	917	930	841
CORN	TEUCRIUM CORN ETF	916	919	669	836	816

The Lyons Share

IBMF	ISHRS IBND SEP 2017 TRM MN BND ETF	916	911	910	920	860
SHV	ISHARES SHORT TREASURY BOND ETF	918	908	912	920	855
UNG	UNITED STATES NATURAL GAS ETF	919	958	971	642	990
GUSH	DRXN DLY S&P OL GS EXP PRD BL 3X ETF	920	913	925	925	911
DBO	POWERSHARES DB OIL ETF	921	934	740	700	574
GCC	WISDOMTREE CONTNUOUS CMODTY INDX ETV	922	949	829	916	855
IBDB	ISHARES IBONDS MAR 2018 TRM ETF	922	915	915	937	844
CIU	ISHARES INTERM CREDIT BOND ETF	924	901	943	949	895
RJN	AB SVSK ELM LKD RGRS IDX TTL RET ETN	925	942	711	686	647
PST	PROSHARES ULTRASHORT LEHMAN 7-10 ETF	926	849	820	801	716
MLPI	UBS E TRACS ALERIAN MLP INFRASTR ETN	927	927	906	867	720
JNUG	DIREXION DILY JR GOLD MIN BUL 3X ETF	928	917	709	474	994
ISTB	ISHARES CORE 1.5 YEAR USD BOND ETF	929	910	940	942	868
CSJ	ISHARES 1-3 YEAR CREDIT BOND ETF	930	923	931	935	870
DBA	POWERSHARES DB AGRICULTURE ETF	930	939	866	936	881
JJE	BARCLAYS BNK IPATH BLOOM ENERGY ETN	932	907	937	904	920
FTSD	FRANKLIN LBRTY SHRT DUR US GVRN ETF	933	919	944	945	899
ENY	GUGGENHEIM CANADIAN ENGY INCOME ETF	934	947	920	940	827
RZV	GUGGENHEIM S&P SMALLCAP 600 PURE ETF	935	952	869	839	701
SHY	ISHARES 1-3 YEAR TREASURY BOND ETF	936	935	945	943	891
IUSB	ISHARES TOTAL USD BOND MARKET ETF	937	926	950	959	932
IEI	ISHARES 3-7 YEAR TRERY BOND ETF	938	930	953	961	931
JJG	BARCLAYS BK IPATH BLOOM GRAINS ETN	939	946	730	900	852
LMBS	FRST TRT LOW DRTN OPPRNTS ETF	940	941	941	948	922
GEUR	ADVISORSHARES GARTMAN GOLD EURO ETF	941	940	947	977	983
USL	UNITED STATES 12 MONTH OIL ETF	942	957	792	781	599
BOIL	PROSHARES ULTRA BLOM NAT GAS ETF	943	969	980	579	995
IEF	ISHARES 7-10 YEAR TRSURY BOND ETF	944	931	956	968	959
PDBC	PWRSHRS ACTVLY MNG OPTM YD DVRS ETF	945	973	908	809	815
USO	UNITED STATES OIL ETF	946	945	729	731	596
RINF	PROSHARES INFLATION EXPECTATIONS ETF	947	937	930	899	835
MLPA	GLOBAL X MLP ETF	948	966	954	913	740
FILL	ISHARES MSCI GLOBAL ENGY PROD ETF	949	943	835	872	743
ZMLP	DIREXION ZACKS MLP HGH INCM SHS ETF	949	954	938	946	786
AMLP	ALPS ALERIAN MLP ETF	951	962	960	933	759
ASFI	ASTA FUNDING ORD	951	627	969	998	989
MLPX	GLOBAL X MLP ENERGY INFRASTRUCT ETF	953	965	958	951	772
XRT	SPDR S&P RETAIL ETF	954	980	963	956	912
OIL	BARCLYS IPATH NOTES LKD GAS OIL INDX	955	958	772	815	611
QAT	ISHARES MSCI QATAR CAPPED ETF	956	913	894	937	774
WDTI	WISDOMTREE MANAGED FUTURES STRAT ETF	956	952	973	973	976
UCO	PROSHARES ULTRA BLOOM CRUDE ETF	958	955	703	673	561
UGAZ	VELOCITYSHARES 3X LNG NTRL GS ETN	959	975	988	559	998
USDU	WISDOMTREE BLOMBRG US DOL BUL ETF	960	929	949	912	820
DSLX	CS VELOCITYSHARES 3X INV SILVER ETN	961	881	927	859	492
TTT	PROSHARES ULTPRO SH 20 YR TSRY ETF	962	938	812	782	667
SOYB	TEUCRIUM SOYBEAN ETF	963	948	747	944	904
IXC	ISHARES GLOBAL ENERGY ETF	964	956	825	915	771
MBB	ISHARES MBS ETF	964	963	973	972	974
DAG	DB AGRICULTURE DOUBLE LONG ETN	966	951	933	964	959
RUSS	DIREXION DAILY RUSSIA BR 3X SHS ETF	967	943	967	958	984
PXE	POWERSHARES DYNAMIC EXPLRTN PRDN ETF	968	974	967	955	914
DBV	POWERSHARES DB G10 CURR HARVEST ETF	969	963	931	967	926
UUP	POWERSHRS DB US DLR INDX BULLISH ETF	970	960	959	939	862
FXP	PROSHARES ULTRASH FTSE CHINA 50 ETF	971	967	982	986	986
IGE	ISHARES NORTH AMER NATL RES ETF	972	972	960	962	866
YANG	DIREXION DLY FTSE CHNA BER 3X ETF	973	971	985	989	993
IEO	ISHARES US OIL GAS EXL PROD ETF	974	983	969	969	930
NIB	BARCLAYS BANK IPATH BLOOM COCOA ETN	975	967	990	997	985
FXN	FIRST TRUST ENERGY ALPHADAX ETF	976	979	964	970	934
BZQ	PROSHARES ULTRSHRT MSCI BRZL CPD ETF	977	961	977	982	981
XLE	ENERGY SELECT SECTOR SPDR ETF	977	977	965	971	923

The Lyons Share

IYE	ISHARES US ENERGY ETF	979	978	962	977	944
GAZ	BARCLYS BK IPATH BLOOM NATL GAS ETN	980	975	984	963	991
VDE	VANGUARD ENERGY ETF	981	980	965	975	938
FENY	FIDELITY MSCI ENERGY INDX ETF	982	982	972	974	946
XOP	SPDR S&P OIL & GAS EXPL & PROD ETF	983	991	988	980	971
JO	BARCLAYS BK IPATH BLOOM COFFEE ETN	984	985	977	992	992
RYE	GUGGENHEIM S&P 500 EQUAL WEI ENG ETF	985	990	976	981	965
DIG	PROSHARES ULTRA OIL & GAS ETF	986	986	979	985	967
GASL	DIR DAILY NAT GAS REL BUL 3X ETF	987	987	987	975	977
TECS	DIREXION DAILY TECHNOLOGY BER 3X ETF	988	984	992	996	997
PXJ	POWERSHARES DYNM OIL SRVCS PRFTL ETF	989	988	983	984	954
RETL	DIREXION DAIL RETAIL BULL 3X SHS ETF	989	1000	994	991	996
ERX	DIREXION DAILY ENERGY BULL 3X ETF	991	989	981	988	969
FRAK	VANECK VCTR UNCNVNTNL OIL GAS ETF	992	996	995	993	986
IEZ	ISHARES US OIL EQUIP SER ETF	993	992	986	983	899
PXI	PWRSHRS DWA ENERGY MNTM ETF	994	997	996	989	975
XES	SPDR S&P OIL & GAS EQUIP & SERVS ETF	995	993	991	979	886
OIH	VANECK VECTORS OIL SERVICES ETF	996	993	993	986	934
PSCE	POWERSHARES S&P SMALLCA ENG PORT ETF	996	998	997	994	980
OHAI	OHA INVESTMENT ORD	998	995	998	995	982
SGG	BARCLAYS BK IPATH BLOOM SUGAR RT ETN	999	999	999	999	1000
DXJR	WISDOMTREE JAPAN HEDGED RL EST ETF	1000	655	1000	1000	999

Disclaimer

Important Consumer Disclosure

The Lyons Share's web site is limited to the dissemination of general investment-related information together with possible access to additional publications and links. Accordingly, the publication of The Lyons Share's web site on the Internet should not be construed by any prospective or existing subscriber as a solicitation to effect, or attempt to effect transactions in securities, or the rendering of personalized investment advice for compensation over the Internet.

Subscribers are solely responsible for choosing investments for their accounts based on their own risk tolerance and general circumstances. The Lyons Share does not make any representations or warranties as to the accuracy, timeliness, suitability, completeness, or relevance of any information prepared by any unaffiliated third party, whether linked to The Lyons Share's web site or incorporated herein, and takes no responsibility therefor. All such information is provided solely for convenience purposes only and all users thereof should be guided accordingly.

Past performance may not be indicative of future results. Therefore, no prospective or existing subscriber should assume that future performance of any specific investment or investment strategy, including the investments and/or investment strategies made reference to directly or indirectly by The Lyons Share on its web site, or indirectly via a link to an unaffiliated third party web site, will be profitable or equal any historical performance level(s).

Please remember that different types of investments involve varying degrees of risk, and there can be no assurance that any specific investment will be suitable for a prospective or existing subscriber's investment portfolio.

Historical performance results for investment indices and/or categories generally do not reflect the deduction of transaction and/or custodial charges, the deduction of an investment management fee, nor the impact of taxes, the incurrence of which would have the effect of decreasing historical performance results.

Certain portions of The Lyons Share's web site (i.e. videos, posts, commentaries, etc.) may contain a discussion of, and/or provide access to, positions and/or recommendations as of a specific prior date. Due to various factors, including changing market conditions, such discussion may no longer be reflective of current position(s) and/or recommendation(s). Moreover, no prospective or existing subscriber should assume that any such discussion serves as the receipt of, or a substitute for, personalized advice from an investment professional.

The Lyons Share is neither an attorney nor an accountant, and no portion of the web site content should be interpreted as legal, accounting or tax advice.

The Lyons Share does not make any representations or warranties as to the accuracy, timeliness, suitability, completeness or relevance of any information prepared by any unaffiliated third party, whether linked to The Lyons Share's web site or incorporated herein, and takes no responsibility therefor. All such information is provided solely for convenience purposes only and all users thereof should be guided accordingly.

Each prospective or existing subscriber agrees, as a condition precedent to his/her/its access to The Lyons Share's web site, to release and hold harmless The Lyons Share, its officers, directors, owners, employees and agents from any and all adverse consequences resulting from any of his/her/its actions and/or omissions which are independent of his/her/its receipt of access to The Lyons Share.