



## **Weekly Macro Market Report**

**December 17, 2017**

## U.S. Broad Equity Market Outlook

### Intermediate-Term: Bullish

*(Will always be Bullish or Bearish)*

Our intermediate-term Risk Model (RM) is Positive and we continue to hold significant long exposure. Internal/breadth indicators have firmed again, especially among large-caps, following mild recent deterioration. That is a positive development, in addition to price structure which remains constructive across most market segments, i.e., higher highs & lows. We continue to follow our game plan to remove some exposure/take some profits off the table in extended areas – and redeploy the capital into other favorable areas as they pull back to favorable risk:reward junctures. In the long-term, nothing material has changed. Given the extended status of some of the Risk Model components, the current Buy signal may not have the typical shelf-life. Additionally, longer-term sentiment and background measures are also at excessively bullish levels and could contribute to a top of significant magnitude following this intermediate-term rally.

- Favored areas of the domestic market are now *large or small-cap, growth or value*, technology, consumer discretionary, health care (broad-based), materials, industrials, housing, financials and transports. Meanwhile, high yield bonds are in the “sell into strength” category.
- Internationally, many markets are consolidating recent rallies and may offer better prospects for *immediate-term* allocation of capital. Furthermore, most continue to present attractive-looking opportunities especially in the long-term. In EM, some BRICS, e.g., Brazil and Russia, India look to offer potentially substantial upside in the longer-term. Those 3 plus China are holding key support in the near-term. Smaller EM countries, e.g., Taiwan, Thailand, The Philippines, Indonesia, South Africa, Chile, etc. may be undergoing major breakouts and offer the best long-term potential in global equities, in our view. In the near-term, several look to be undergoing successful (for now) tests of support. European markets still look potentially constructive intermediate-term, but are undergoing key tests after pulling back from their strong post-August bounces. Upside is still favored there in broad indices, e.g., STOXX 600 as well as individual markets, e.g., Germany, UK, but near-term support must be held & a sharp recovery back to recent highs is sorely needed. PIIGS, meanwhile, are displaying perhaps the worst behavior of the global equity market which may be a subtle warning sign. Japan is also still attractive long-term and is consolidating its recent swift rally.
- In other markets, the 10-year Treasury Yield is holding key support near 2.31% and remains above the key “regime-defining” level near 2.20%. We expect further upside in rates in longer-term as long as they remain above the “regime line”. The 30-Year Yield lost its near-term 2.78% support level and could move moderately lower. Commodities are a mixed bag. Crude oil is consolidating multi-year highs and may have moderate further upside in the short-term. Industrial metals, e.g., copper, held a test of important support and are bouncing back nicely. Precious metals also lost near-term support and are at risk for further downside. Silver (SLV) is testing especially important longer-term support. The Dollar Index is holding its key bottoming level ~92.50-93, while the Euro is still testing its key pivot area.

**Bottom Line:** The Risk Model Buy signal and continued constructive price puts serious stock market danger on hold. Thus, further upside in the intermediate-term is expected. Recent internal deterioration has been repaired and aids the near-term bullish case. Most market segments are still constructive, technically, and we continue to reduce exposure in extended areas and add long exposure on pullbacks to support in favored areas (e.g., technology, consumer discretionary, large or small-cap growth or value, health care, materials, industrials, housing, financials and transports).

### Short-Term: Neutral

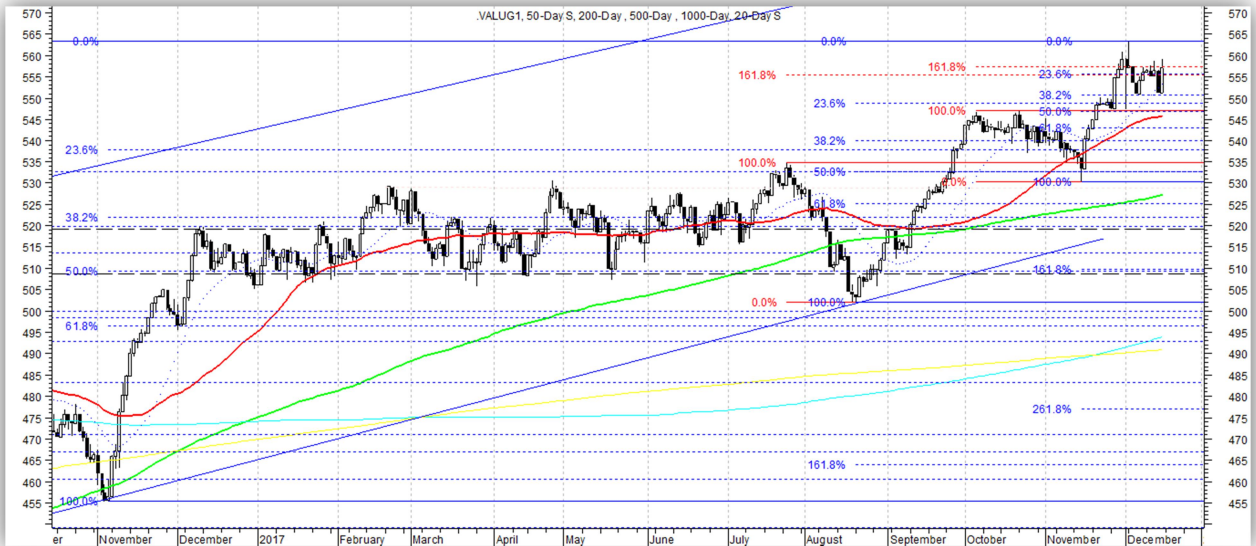
*(Will be Bullish, Bearish or [often] neutral – used more for trade entry/exit timing purposes)*

Following the latest breakout to new highs, consolidation is the order of the day in most domestic equity areas. With our Risk Model bullish, we continue to maintain substantial long exposure while taking profits in swing long trades in extended areas and redeploying into other areas experiencing pullbacks to support. There are no favored domestic areas near support at the moment. Utilities and energy are the closest sectors to support. No sectors are at extended profit-taking levels either. Many international equity markets have bounced off key support levels and are middle-of-the-road, near-term, including BRIC’s, e.g., Russia, India, and smaller EM’s (e.g., South Korea, Taiwan, Thailand, The Philippines, South Africa, Chile). The latter group appears to be in the process of testing major recent breakout levels, and may offer the best longer-term potential. China is testing key near-term support within a less-attractive longer-term set-up. European markets (e.g., STOXX 600, Germany, France, UK) are bouncing finally after holding key support levels -- and needed it. Mexico is nearing short-term resistance after a counter-trend bounce while Australia and Canada are consolidating breakouts and may offer new attractive setups as well. 10-Year Yields are holding support while the 30-Year Yield has broken near-term support. The U.S. Dollar Index is holding key long-term support while the Euro is testing its key pivot point and could go either way (leaning to the downside presently). Gold and silver lost key near-term support, opening lower prices with SLV currently testing important long-term support.

# U.S. Equity Index Charts

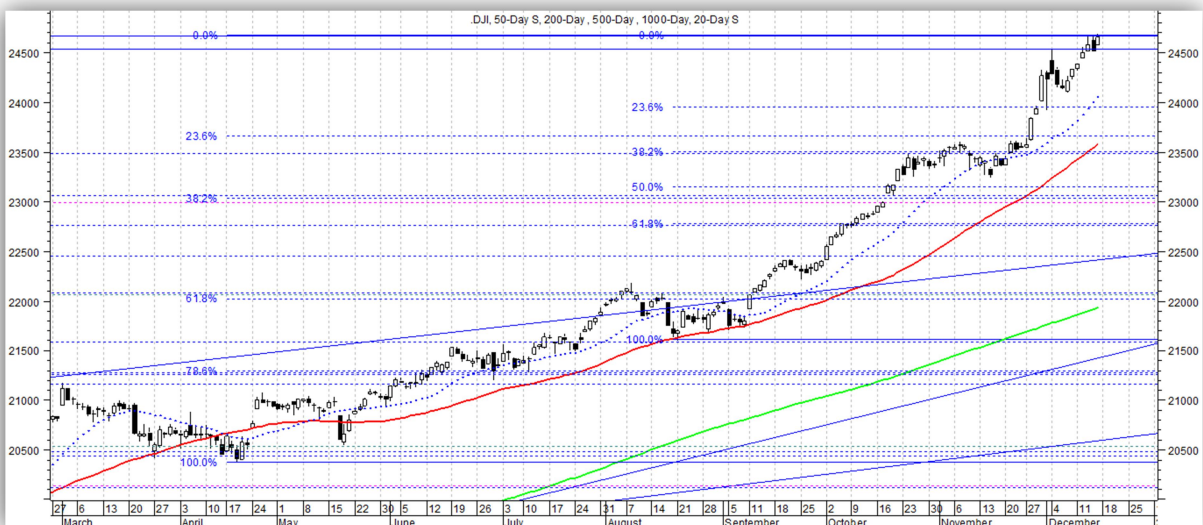
## Value Line Geometric Composite (tracks "median" stock)

Bullish. Consolidating recent breakout to all-time high. Short-term Fib Extensions producing a pause. Key support levels: 548, 543, 540, 532, 525, 519, 509, 495, 455. Key resistance levels: 563.



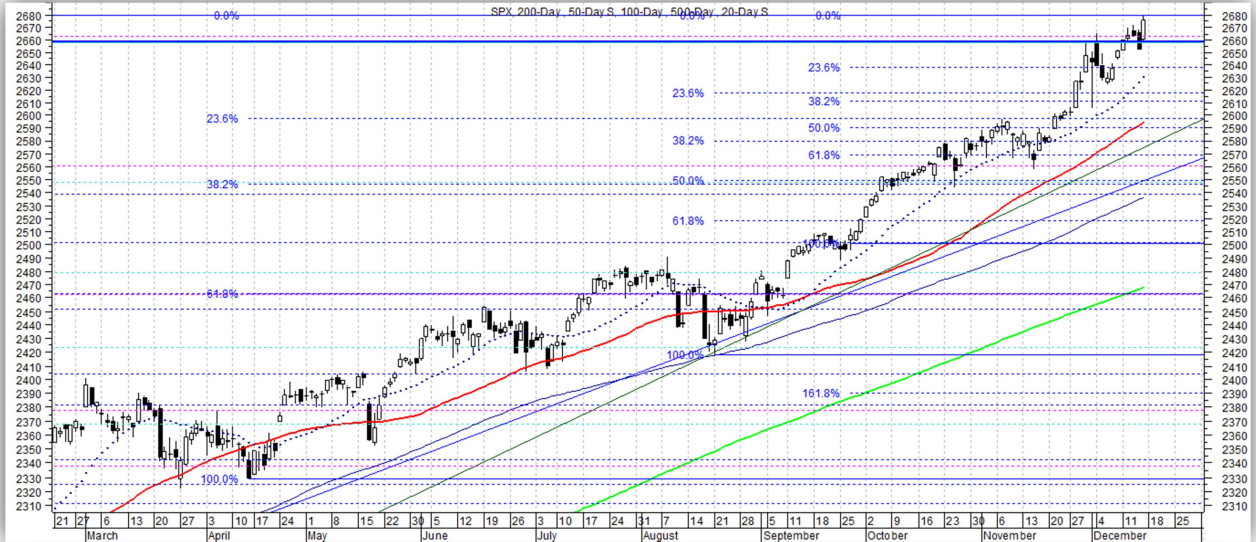
## Dow Jones Industrial Average

Bullish. New all-time highs again. Further intermediate-term gains possible, but extended now. Key support levels: 23,950, 23,500, 23,050, 22,800, 22,050, 21,600, 21,200, 20,400. Key resistance levels: 24,700.



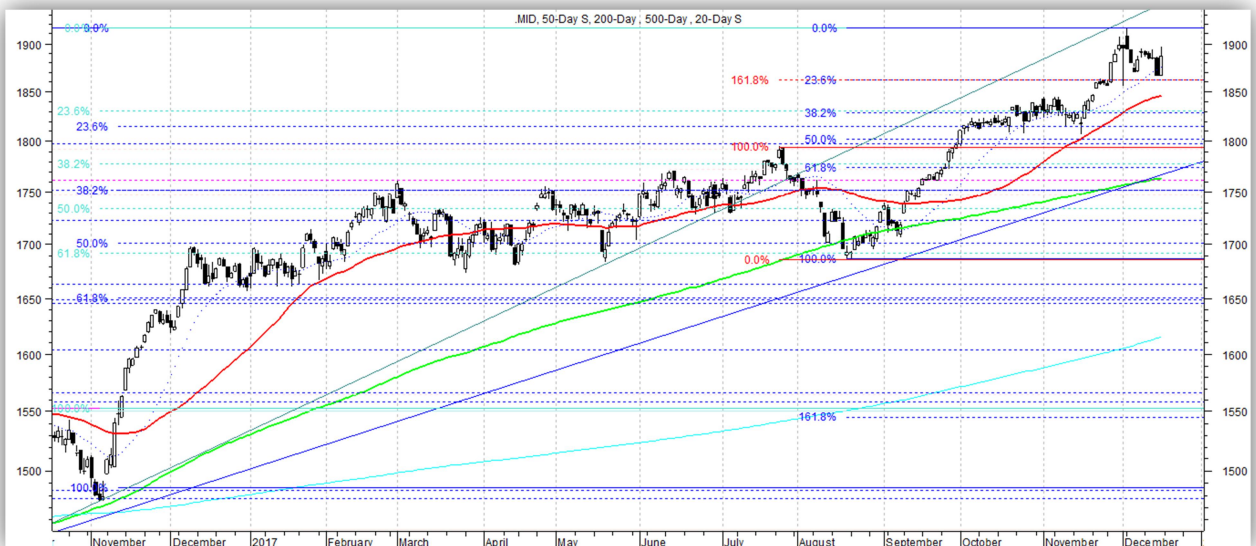
### S&P 500

Bullish. New all-time highs again. Further intermediate-term gains possible, but hitting key Fib Extension now. Key support levels: 2635, 2615, 2580, 2568, 2550, 2500, 2460, 2420, 2385, 2345. Key resistance levels: 2680.



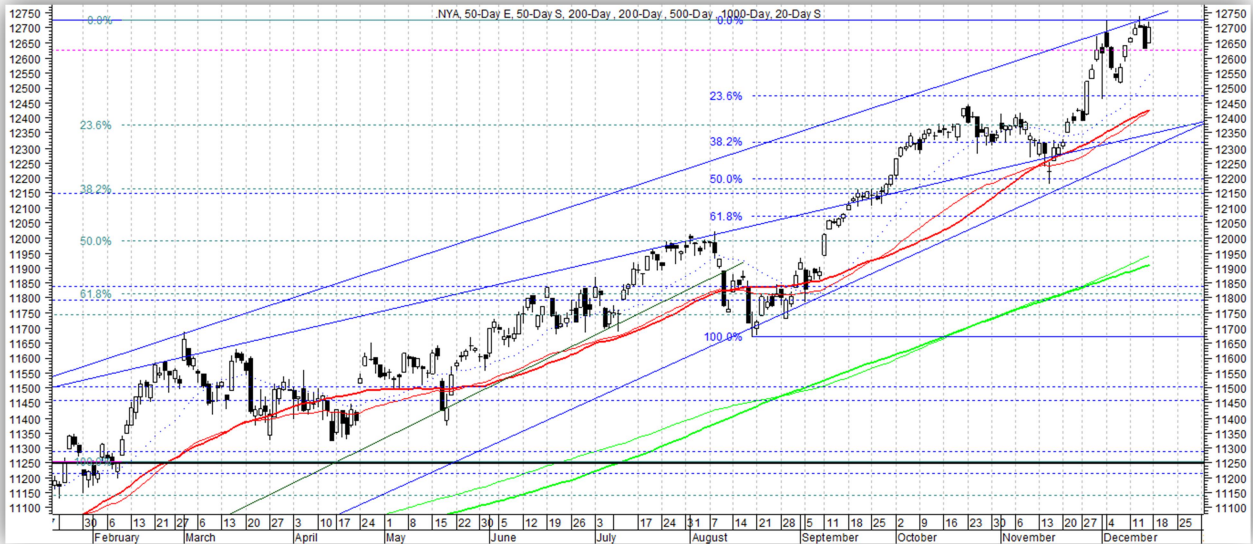
### S&P 400 Mid-Cap

Bullish. Consolidating recent burst to all-time highs. Key support levels: 1860, 1830, 1799, 1775, 1750, 1710, 1620. Key resistance levels: 1916.



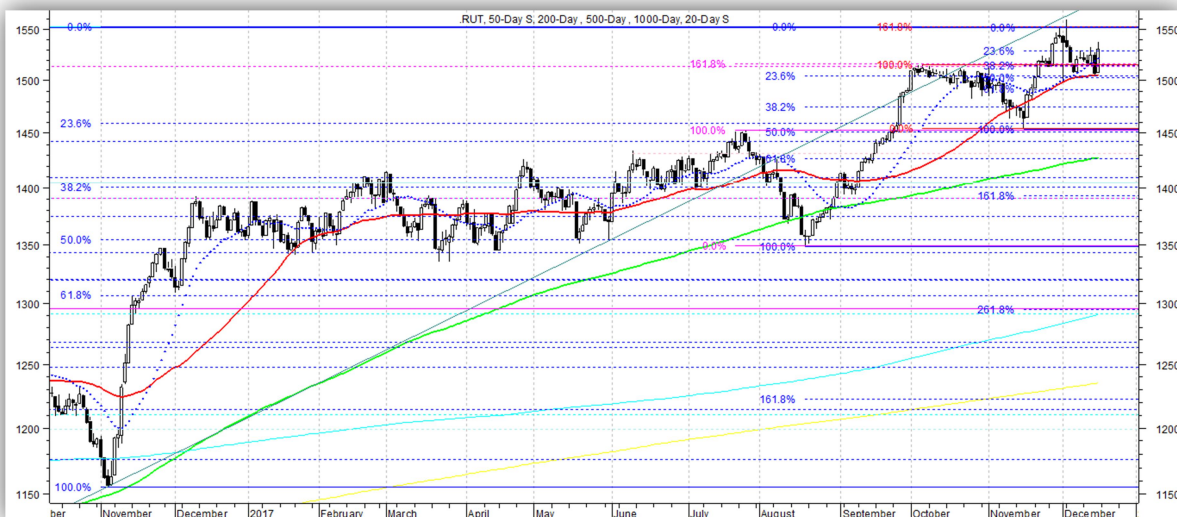
## NYSE Composite

Bullish. Consolidating near all-time highs. Further intermediate-term gains possible but testing key Fib Extension now. Key support levels: 12,460, 12,350, 12,150, 12,060, 11,800, 11,450, 11,250. Key resistance levels: 12,710.



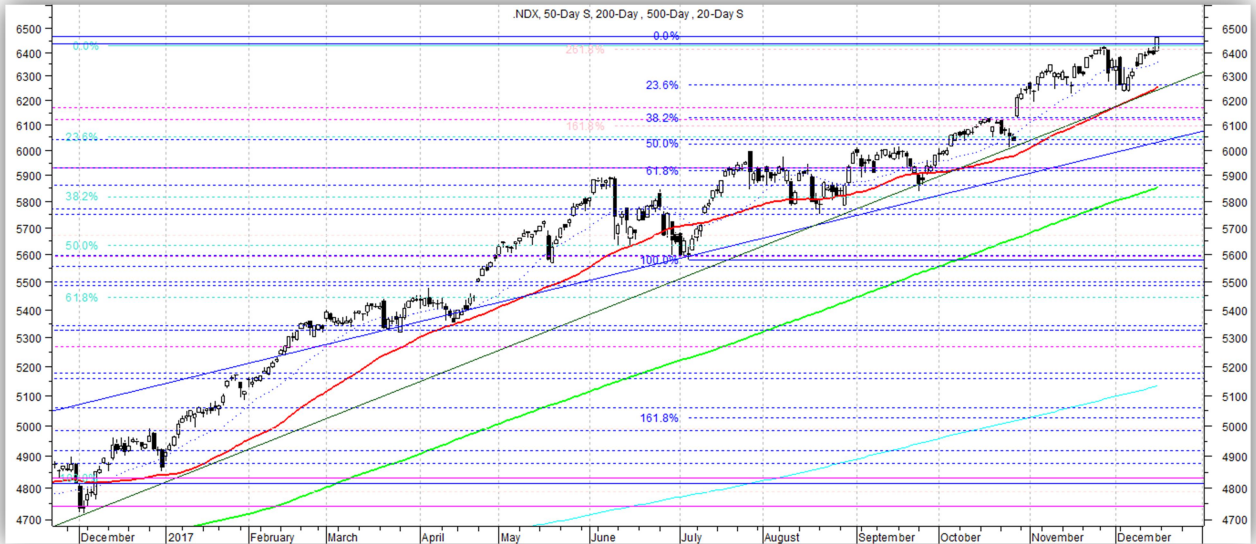
## Russell 2000

Bullish. Held test of recent breakout level. Key support levels: 1505, 1475, 1455, 1425, 1350, 1300. Key Resistance levels: 1551.



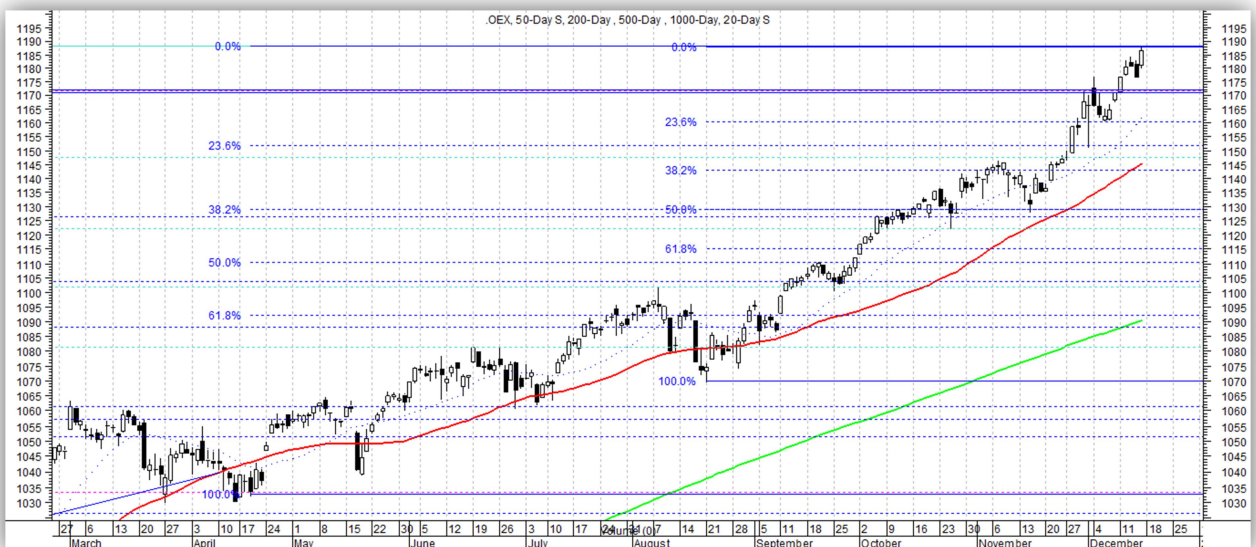
### Nasdaq 100

Bullish. New all-time highs again. Bounced off near-term support, holding below short-term Fibonacci Extension. Key support levels: 6250, 6125, 6025, 5910, 5750, 5590, 5480, 5400, 5325. Key resistance levels: 6460.



### S&P 100

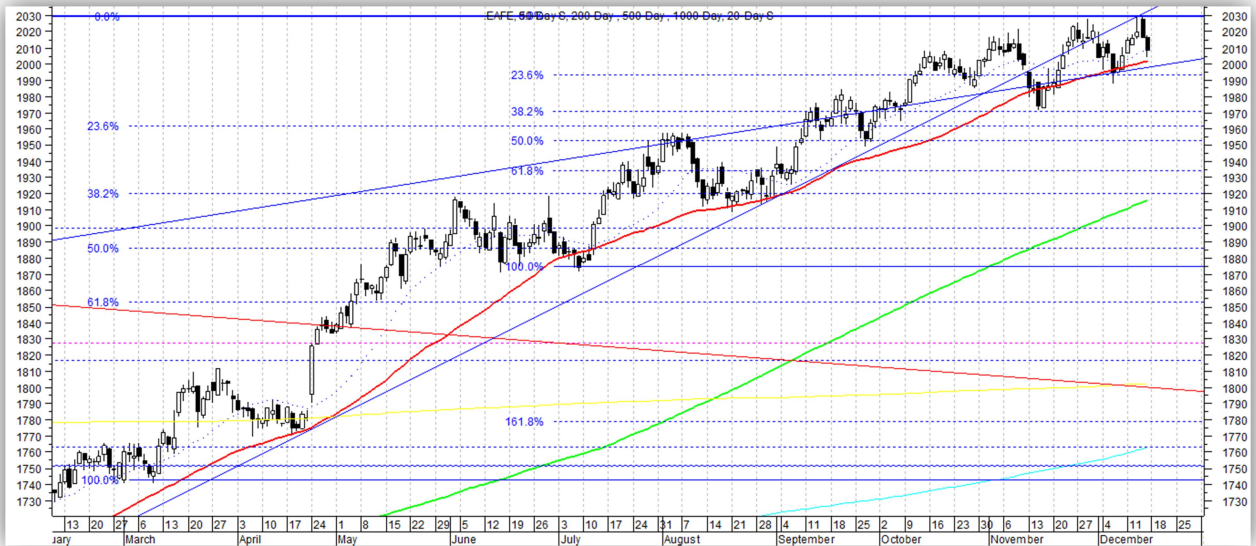
Bullish. New all-time highs again. Breaking above key Fib Extension. Key support levels: 1172, 1160, 1142, 1127, 1115, 1090, 1070, 1030, 1010, 995. Key resistance levels: 1188.



# International Indices

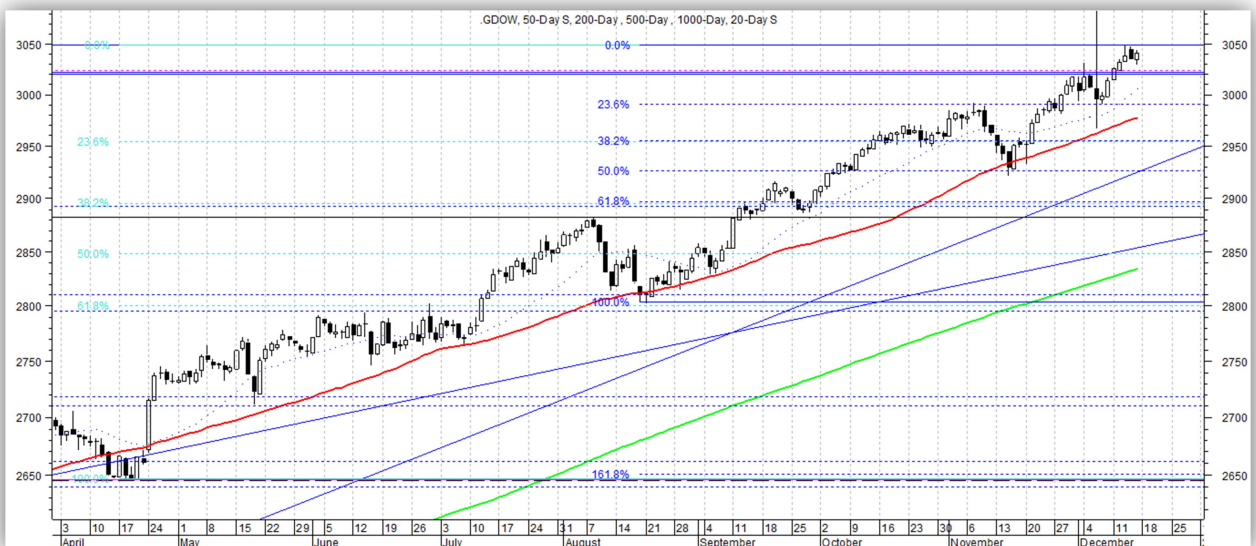
## MSCI EAFE

Bullish. Consolidating near multi-year highs. 2014 peak is resistance nearby. Key support levels: 1992, 1960, 1920, 1880, 1800, 1770, 1740. Key resistance levels: 2030.



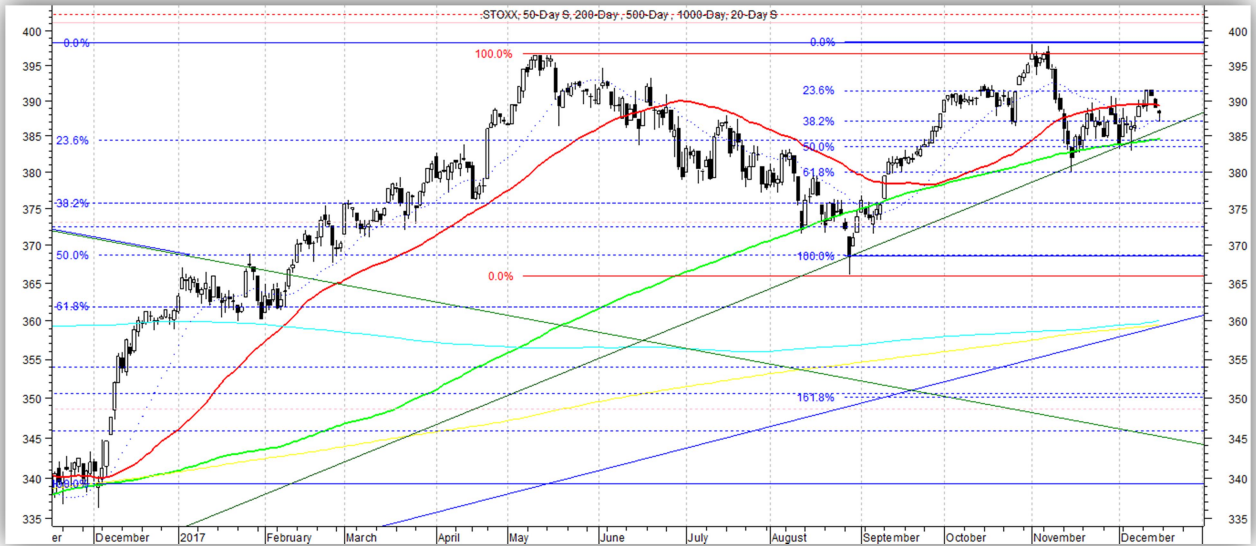
## Global Dow

Bullish. New all-time highs again. Testing key Fib Extension. Key support levels: 2990, 2955, 2895, 2801, 2748, 2660. Key resistance levels: 3050.



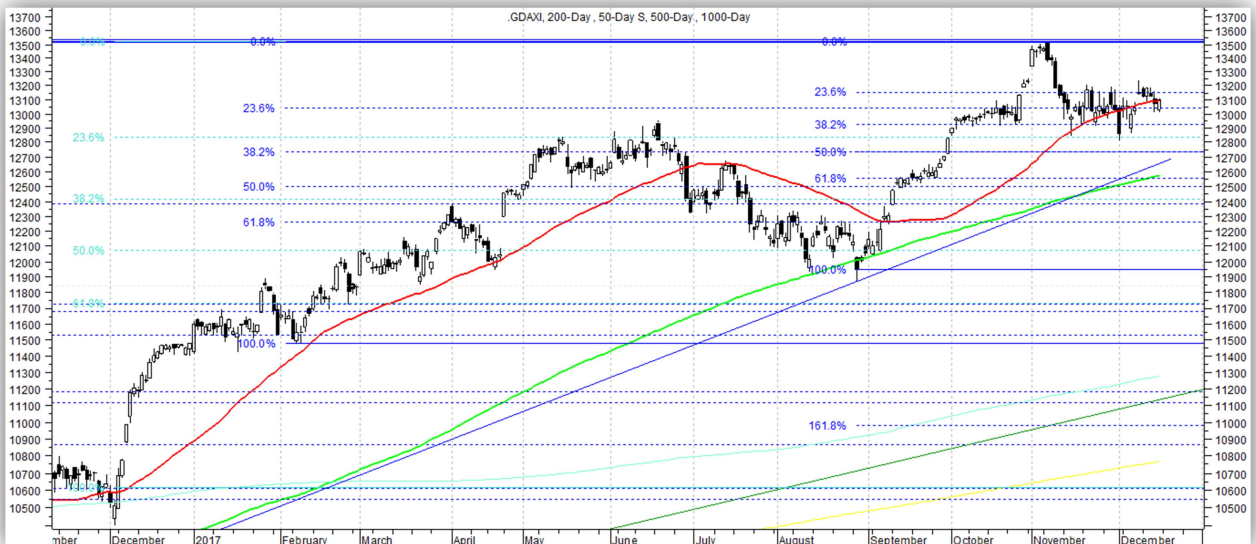
## STOXX Europe 600

Bullish. Still holding key support ~383, but needs to rally towards recent highs soon to maintain upward momentum. Key support levels: 383, 378, 374, 337. Key resistance levels: 392, 396.50, 400, 415.



## German DAX

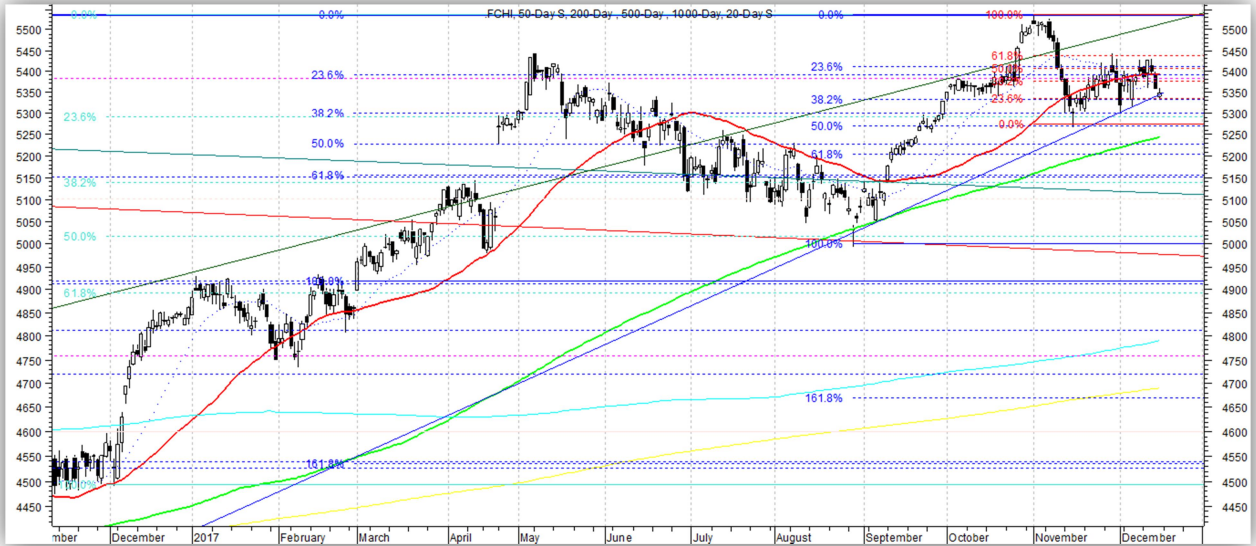
Bullish. Still testing break former breakout level ~13,000. Key support levels: 12,900, 12,750, 12,500, 12,200, 11,950, 11,600. Key resistance levels: 13,150, 13,500.





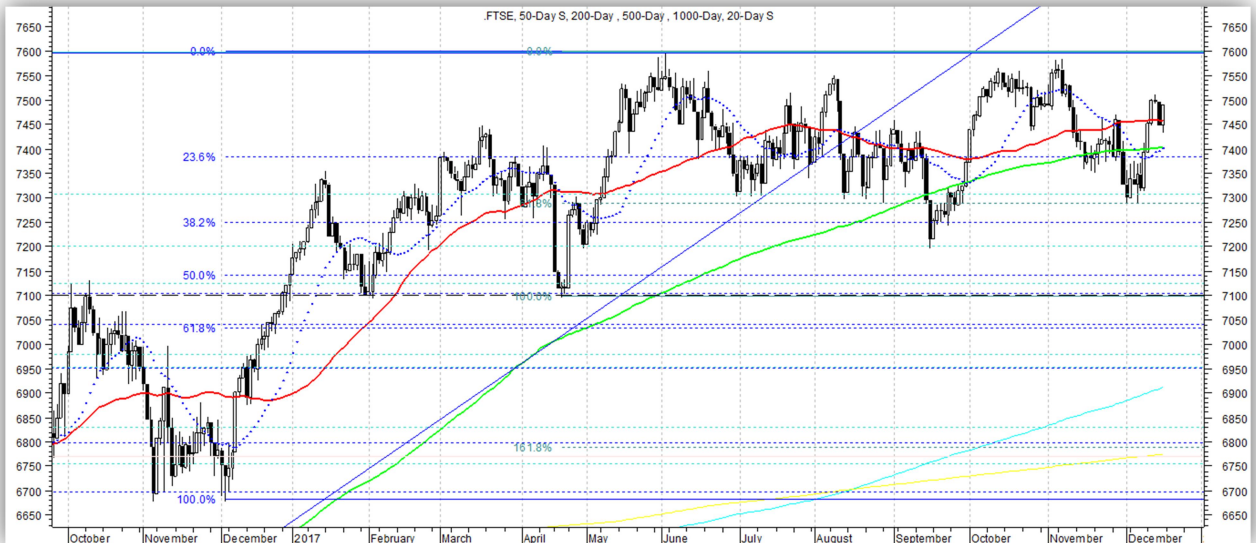
### France CAC-40

Bullish. Still holding key support ~5300, but needs to rally towards recent highs soon to maintain upward momentum. Key support levels: 5330, 5270, 5200, 5150, 5000, 4920. Key resistance levels: 5430, 5530.



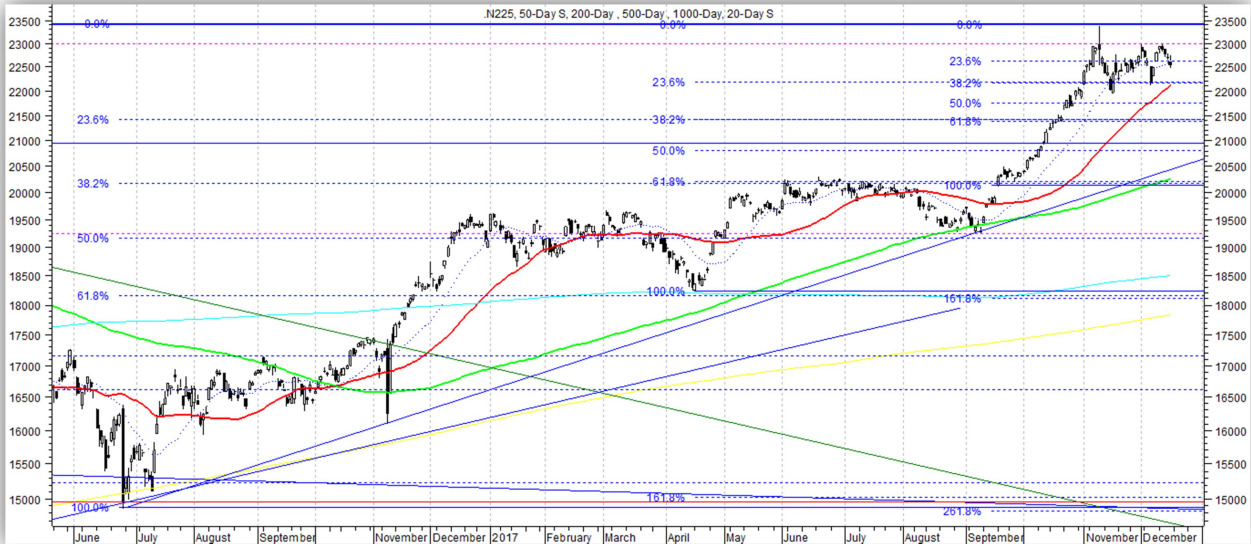
### UK FTSE-100

Bullish. Consolidating all-time highs for past 12 months. Still looking for eventual new highs. Key support levels: 7290, 7200, 7100, 6980-7000. Key resistance levels: 7550-7600.



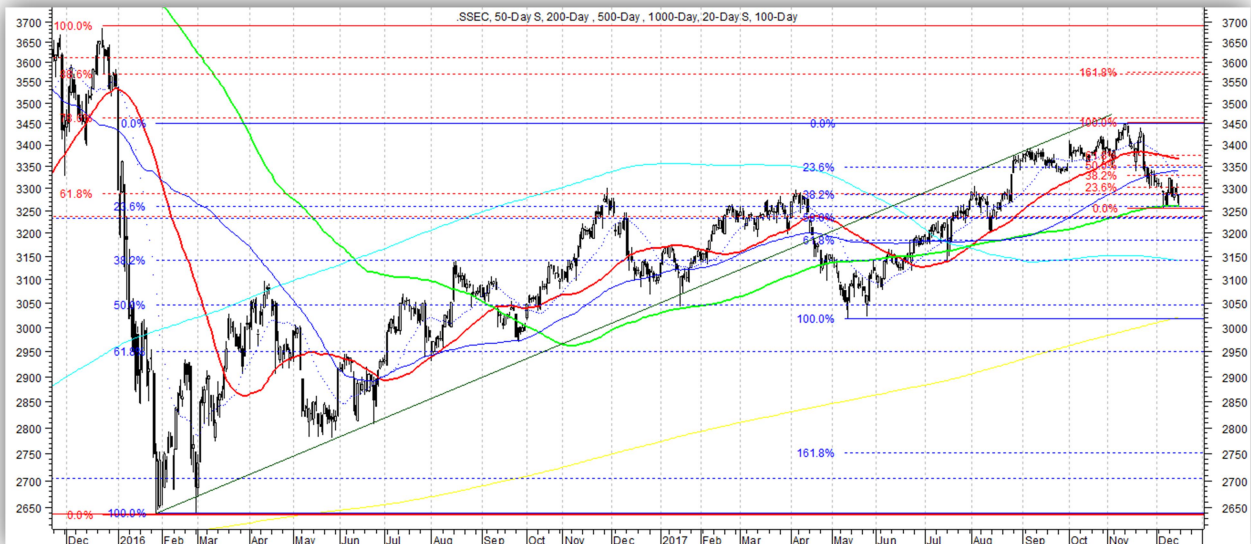
## Japan Nikkei 225

Bullish. Consolidating recent burst to multi-year highs. Looking for more upside eventually in intermediate-term.  
 Key support levels: 22,150, 21,400, 21,000, 20,150, 19,200, 18,210. Key resistance levels: 23,000, 27,000.



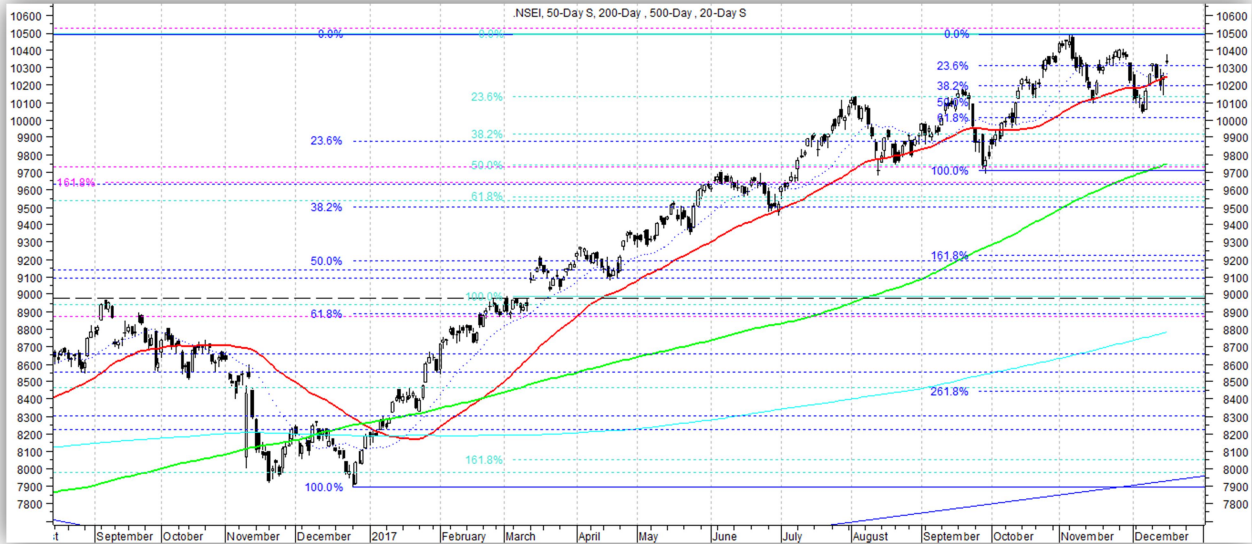
## China Shanghai Composite

Bullish. Pulling back to near support/breakout level ~3280 now. Looking for moderate further upside in intermediate-term. Key support levels: 3260, 3235, 3180, 3140, 3070, 2970, 2890. Key resistance levels: 3350, 3465, 3570, 3660.



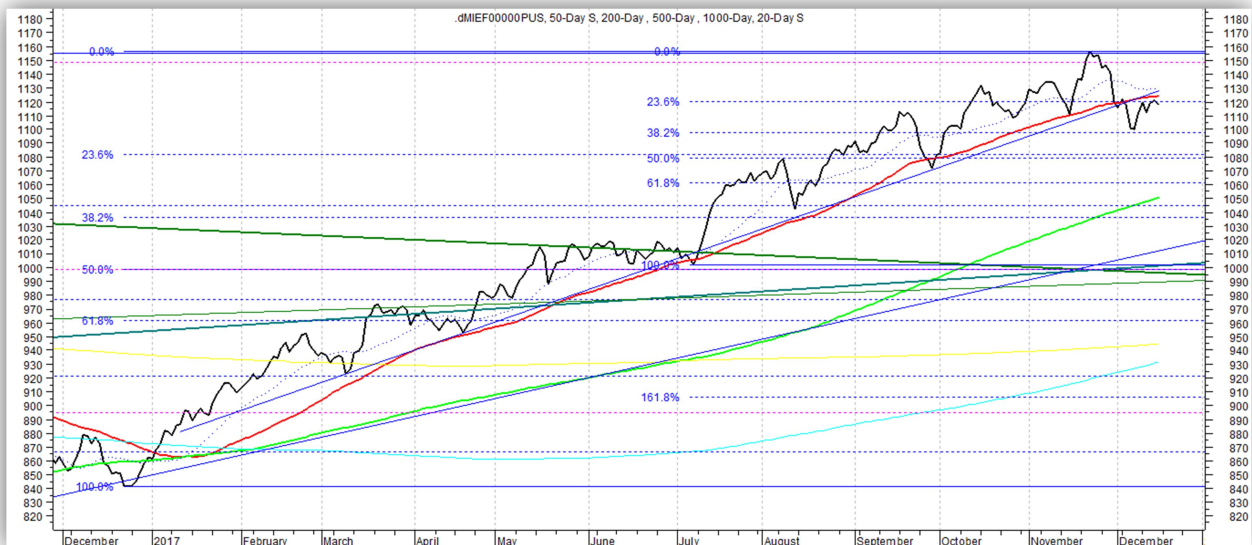
## India Nifty 50

Bullish. Consolidating recent breakout to all-time highs. Looking for more upside in intermediate to long-term, but holding beneath key Fib Extension. Key support levels: 10,000, 9880, 9700, 9600, 9440, 9280, 8990, 8790, 8580, 7900. Key resistance levels: 10,500.



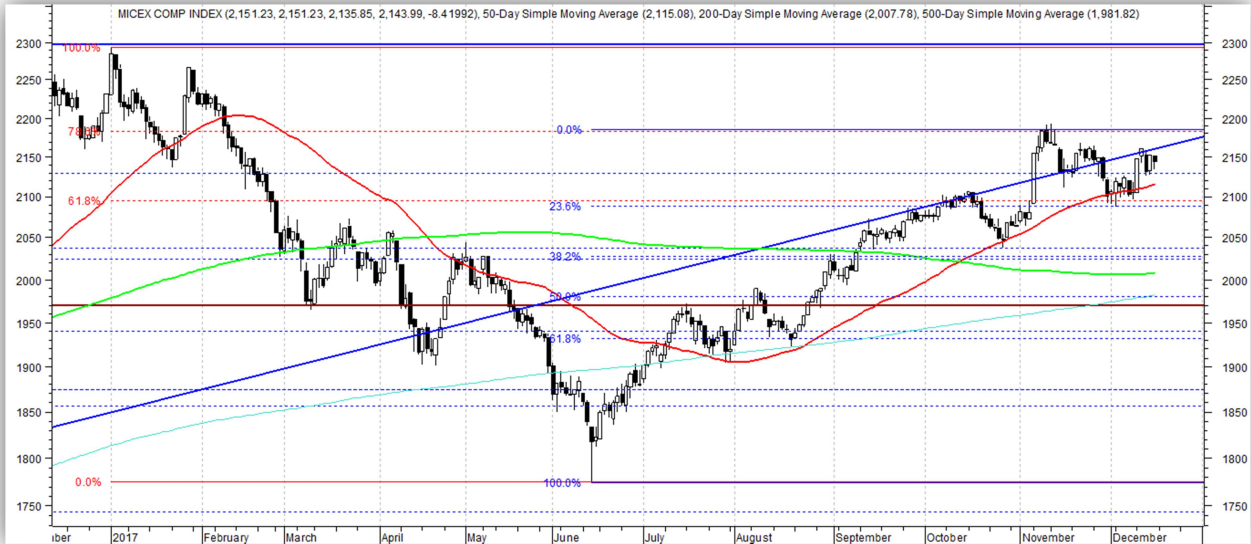
## MSCI Emerging Markets

Bullish. Pulling back from multi-year highs. Broke near-term support, but looking for further gains in long-term. Key support levels: 1095, 1080, 1060, 1040, 1000, 950, 935. Key resistance levels: 1120, 1153.



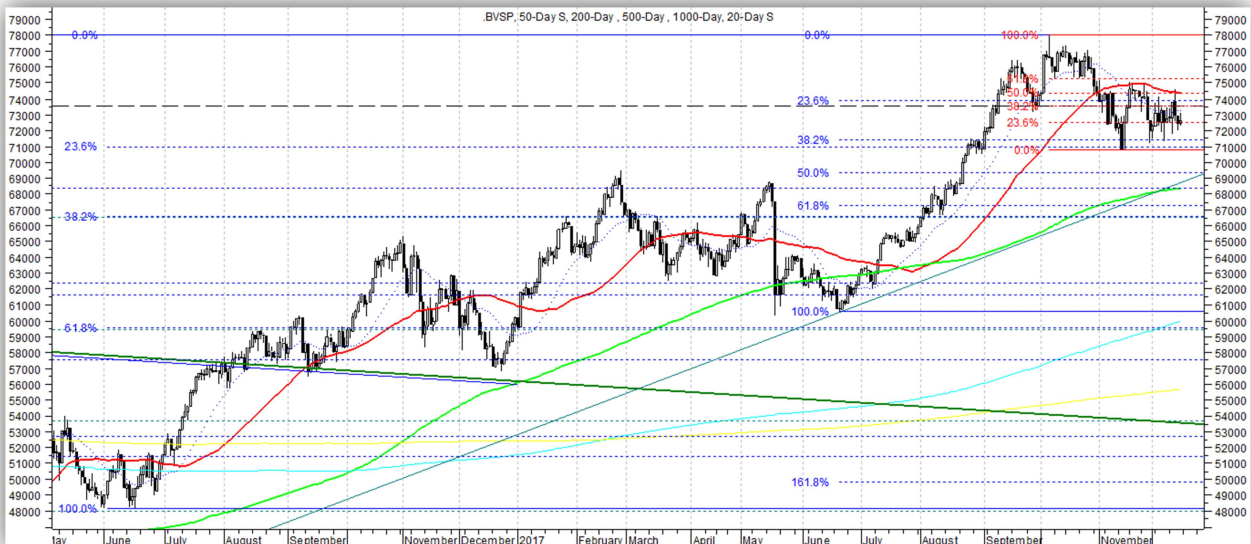
## Russia MICEX

Bullish. Held test of breakout level at early October highs/key Fibonacci level. Key support levels: 2100, 2030, 1970, 1930, 1900, 1870, 1775, 1741, 1610. Key resistance levels: 2190, 2300.



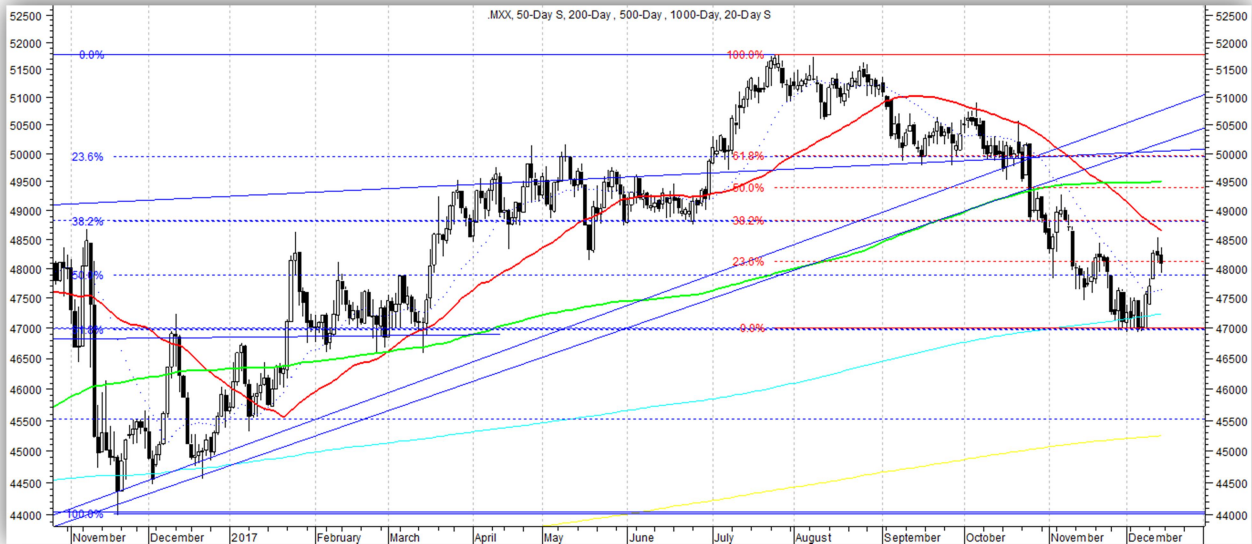
## Brazil Bovespa

Bullish. Still consolidating near level of former all-time highs ~73,500; breakdown opens downside to ~68,000. Looking for further upside longer-term, though. Key support levels: 71,000, 68,000, 60,500, 57,000. Key resistance levels: 75,200, 77,000-78,000.



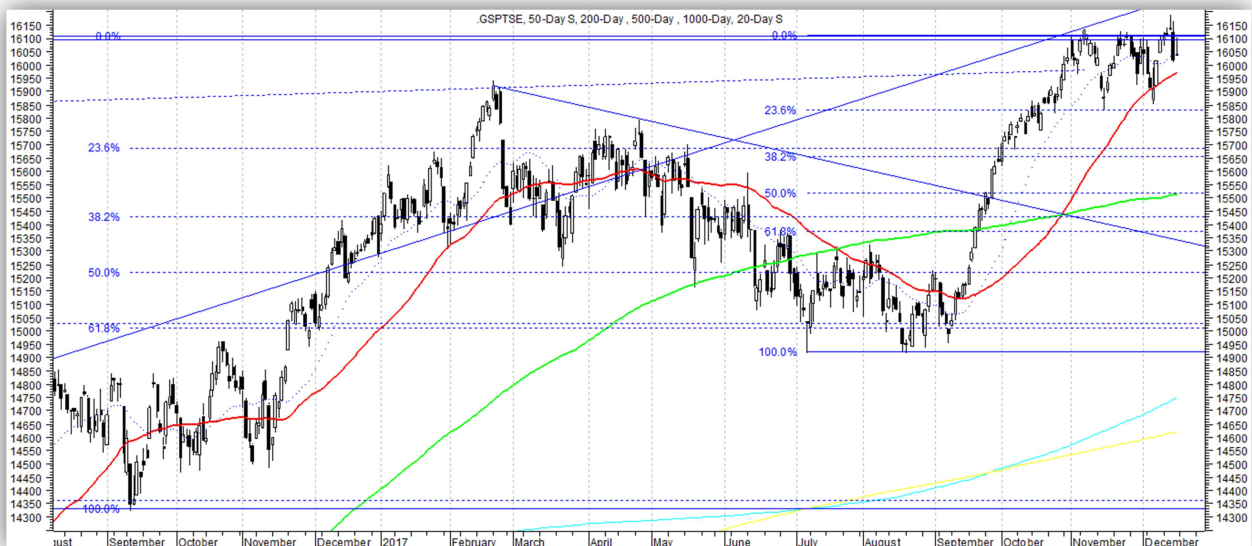
## Mexico IPC

Bearish. Bouncing off key cluster of Fib Retracements ~47,000. Key support levels: 47,000, 46,400, 44,000, 43,500. Key resistance levels: 48,850, 50,000, 51,700.



## Canada TSX

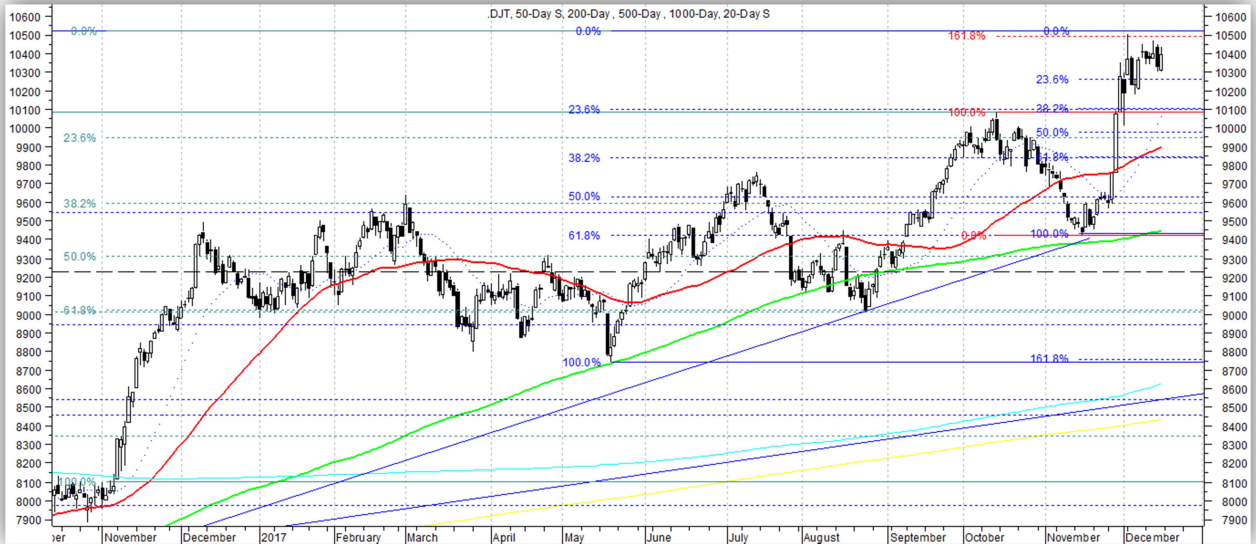
Bullish. Consolidating at all-time highs. Look for new highs in intermediate-term. Key support levels: 15,830, 15,680, 15,400, 15,000. Key resistance levels: 16,100.



# U.S. Sector & Sector/Industry ETF Charts

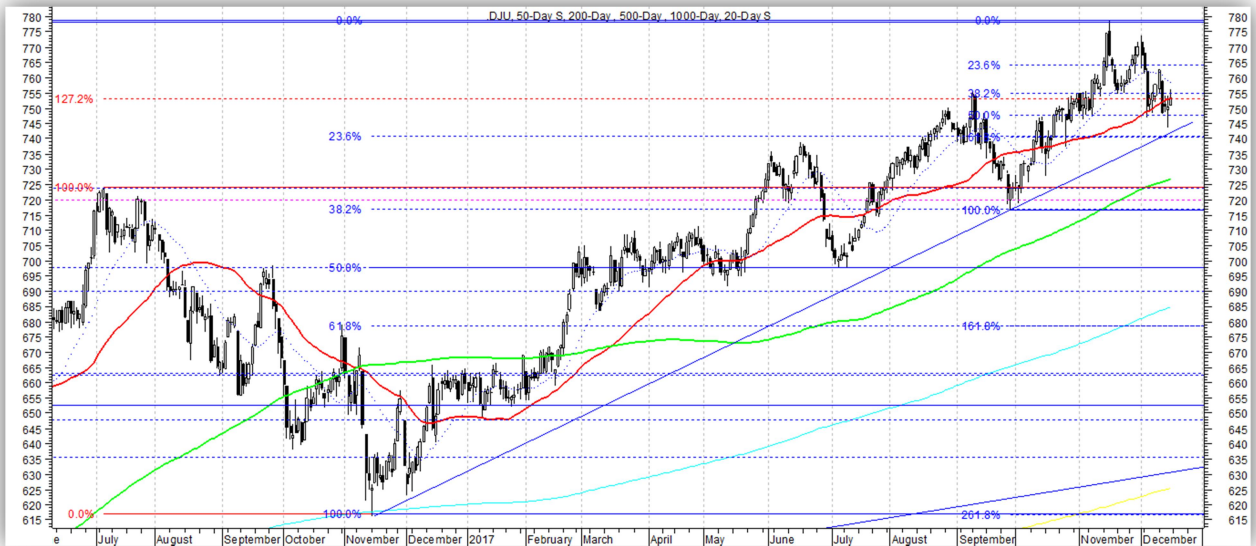
## Dow Jones Transportation Average

Bullish. Consolidating recent blast back to new highs. Short-term Fib Extension providing resistance. Key support levels: 10,100, 9750, 9400, 9230, 9000, 8930, 8750, 8400, 8000. Key resistance levels: 10,500.



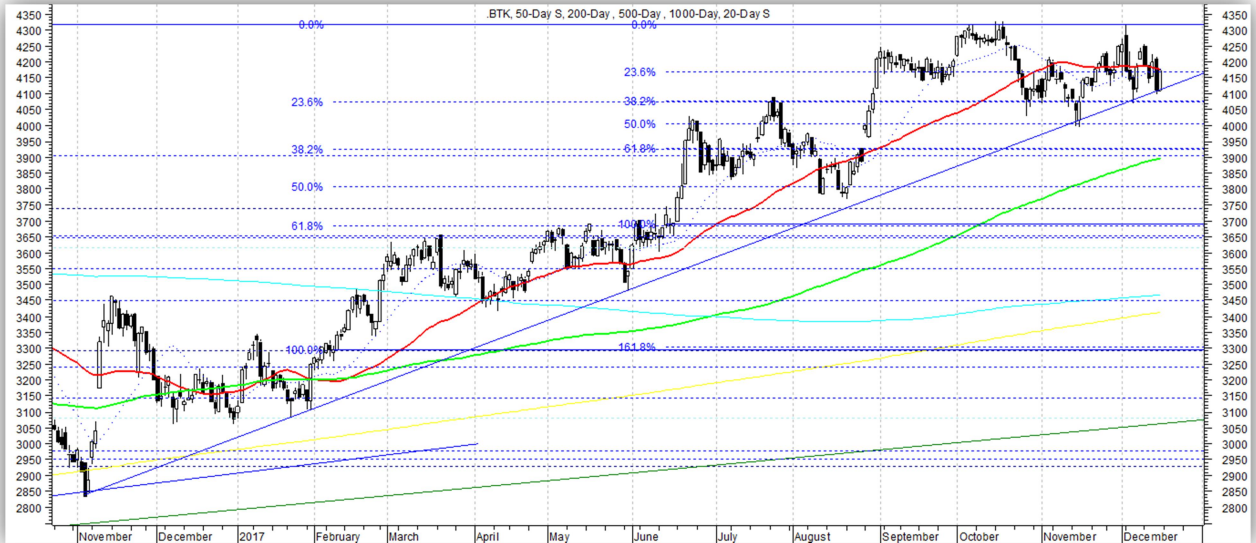
## Dow Jones Utility Average

Bullish. Testing level of most recent breakout to all-time highs. Key support levels: 740, 720, 702, 670. Key resistance levels: 764, 779.



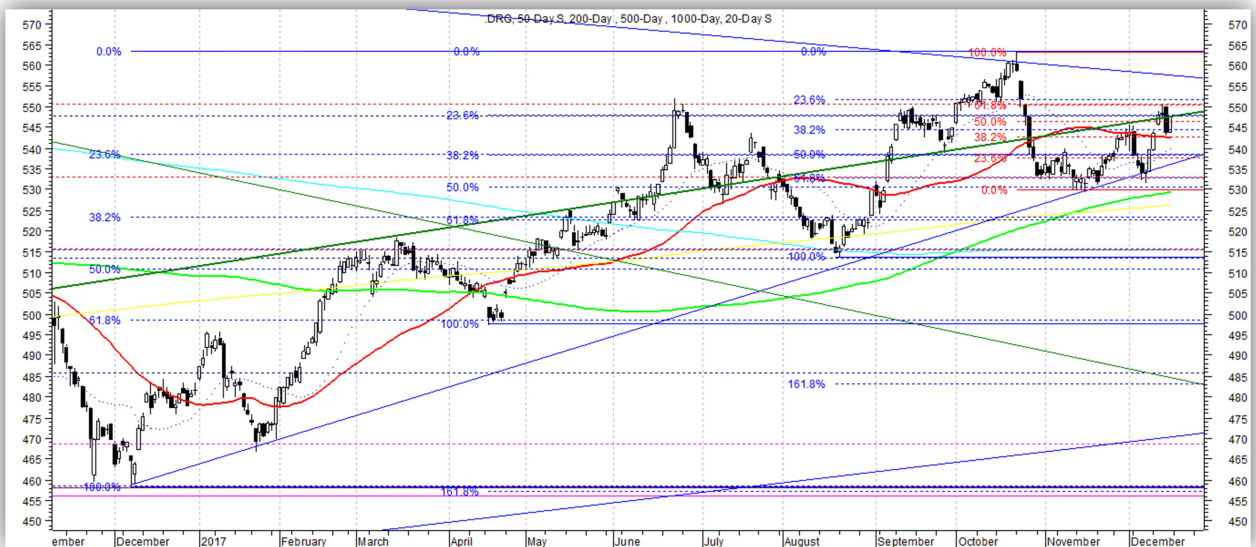
### NYSE Biotech Index-BTK

Bullish, near-term; bearish, longer-term. Still testing key support, but possibly limited upside in longer-term due to lower highs after potential bubble top in 2015. Key support levels: 4075, 3925, 3650, 3300. Key resistance levels: 4310, 4460.



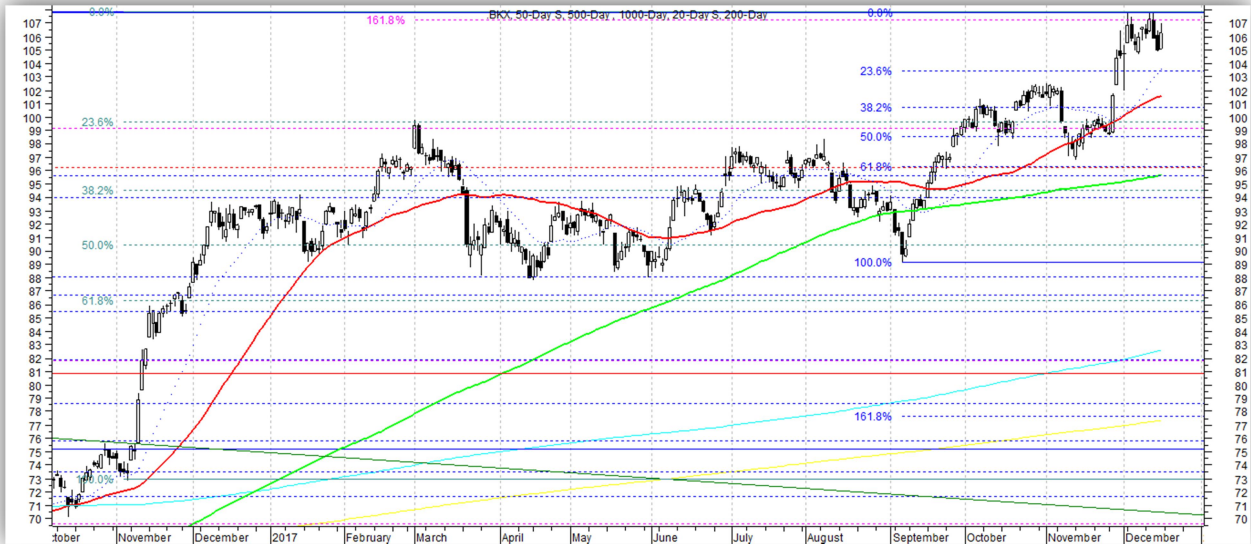
### NYSE Pharma Index-DRG

Bullish near-term; bearish, longer-term. Hitting near-term resistance. Upside perhaps limited longer-term due to lower highs on chart after topping in 2015. Key support levels: 538, 532, 522, 515, 498, 485, 458. Key resistance levels: 550, 561, 607.



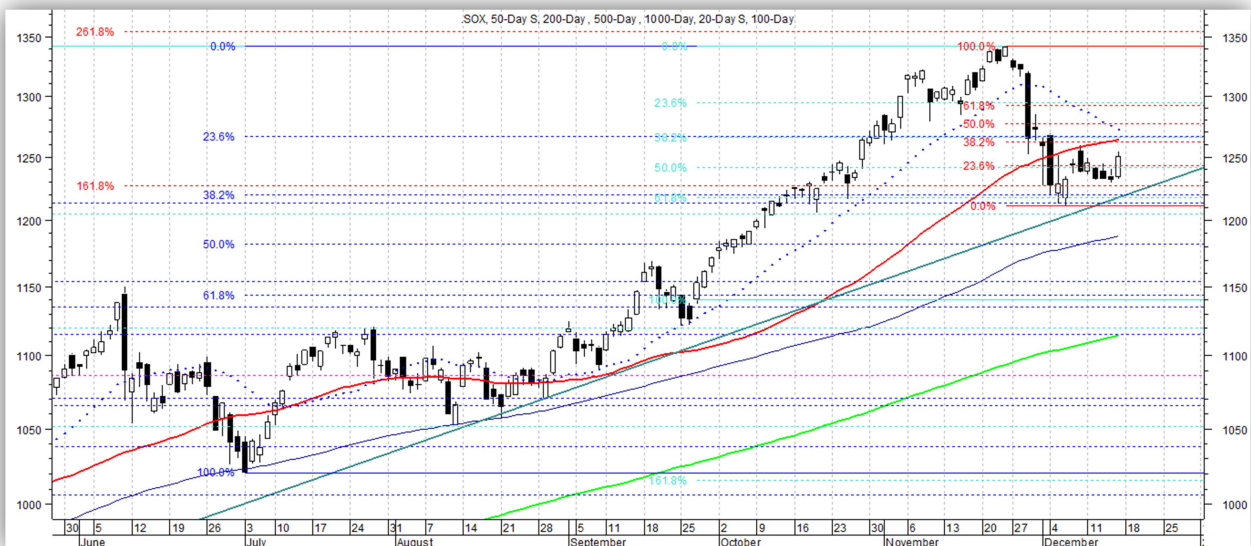
### KBW Bank Index-BKX

Bullish. Consolidating below short-term Fib Extension following recent blast back to new highs. Key support levels: 103.50, 100.75, 98.50, 96, 93, 89, 85, 81.50. Key resistance levels: 107.50, 109.50.



### PHLX Semiconductor Index-SOX

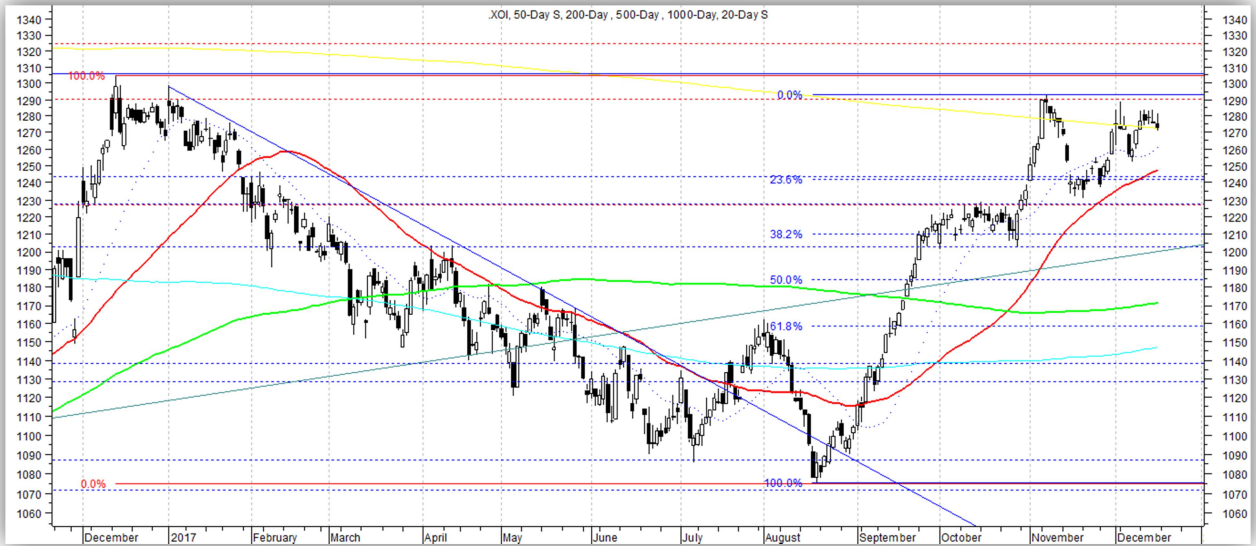
Bullish. Held key near-term support after being rejected near 2000 all-time highs. Key support levels: 1215, 1140, 1100, 1086, 1080, 1040-1050, 1000, 960. Key resistance levels: 1262, 1292, 1355, 1370.





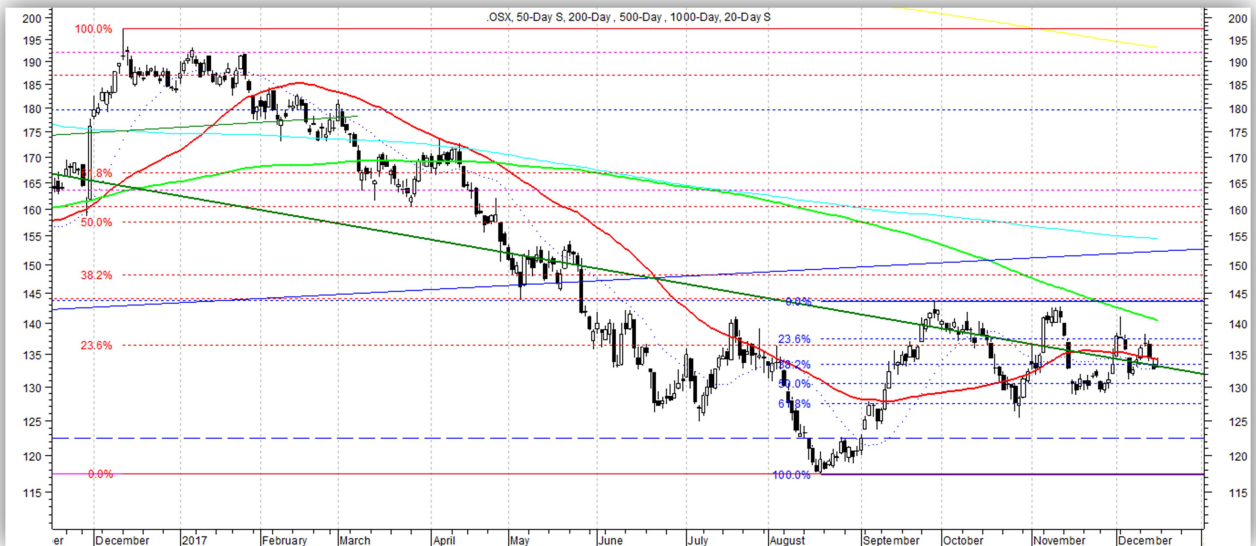
### NYSE Oil & Gas Index-XOI

Bullish. Consolidating near 52-week high. Key support levels: 1240, 1210, 1158, 1140, 1072. Key resistance levels: 1290-1300.



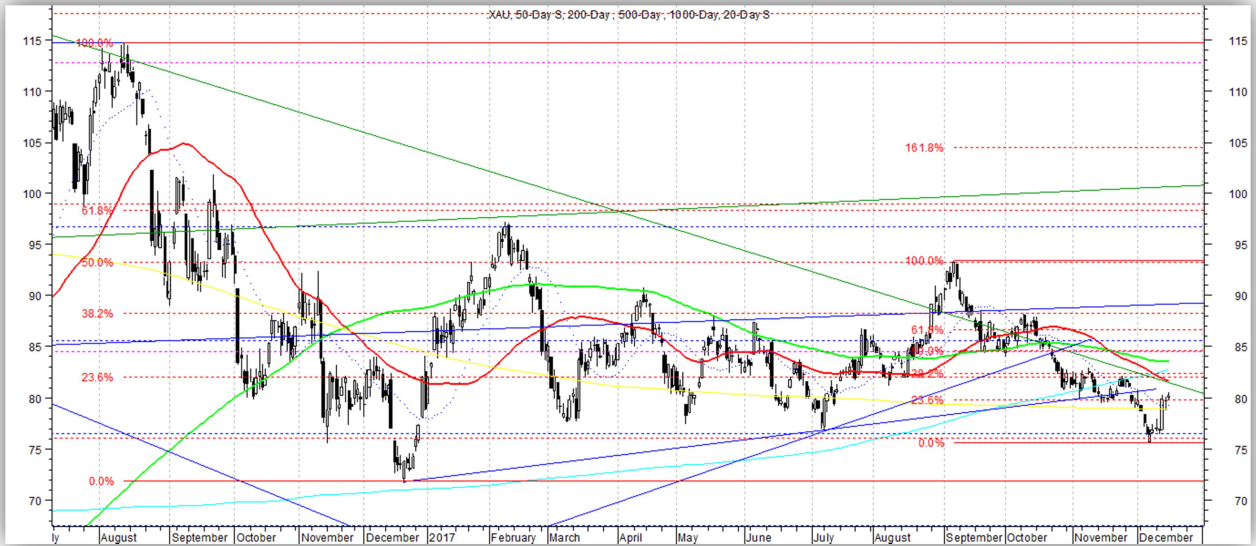
### PHLX Oil Services Index-OSX

Bearish. Consolidating near multi-year lows; needs to bounce sharply. Key support levels: 127, 117.50, 104, 97. Key resistance levels: 143, 148, 157, 167, 182, 195, 217.



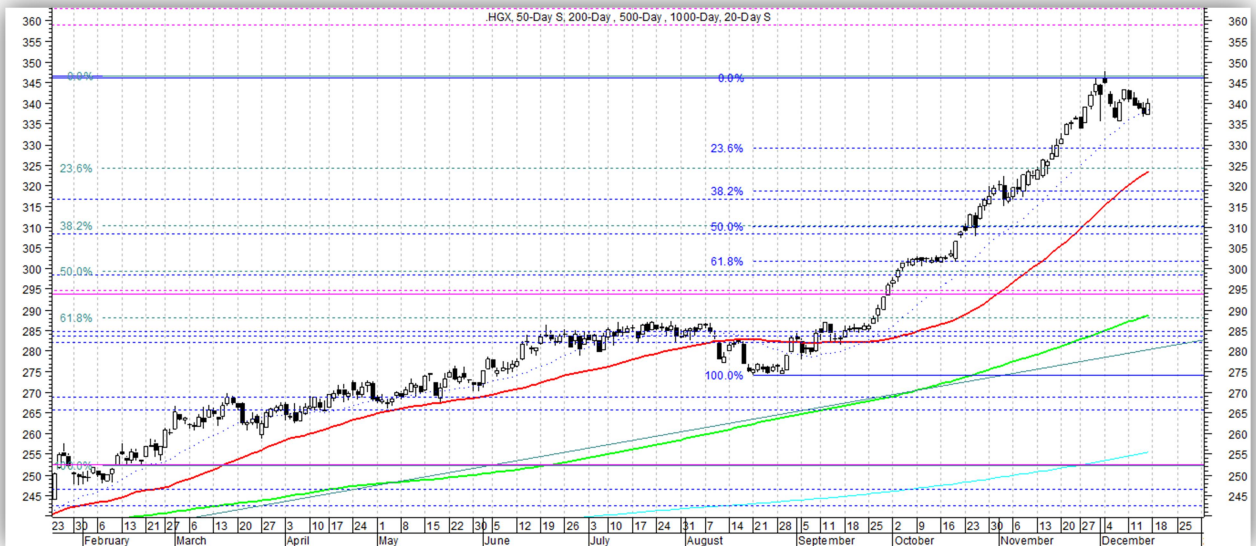
### PHLX Gold/Silver Index-XAU

Bearish. Broke near-term support; opens up potential further downside. Key support levels: 75, 71.50, 67. Key resistance levels: 82, 87, 88.50, 93, 97-99, 105, 114.



### PHLX Housing Index-HGX

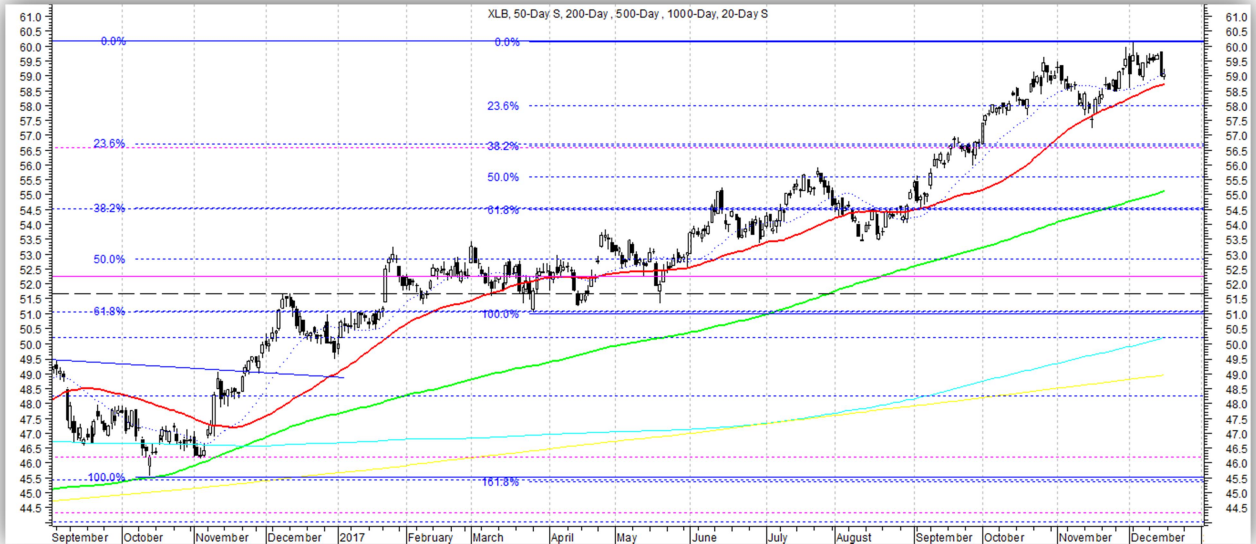
Bullish. Consolidating near all-time highs. Further upside possible in intermediate-term, but extended, near-term. Key support levels: 329, 317, 298, 294, 284, 275, 262, 256. Key resistance levels: 347.



## Sector ETF's

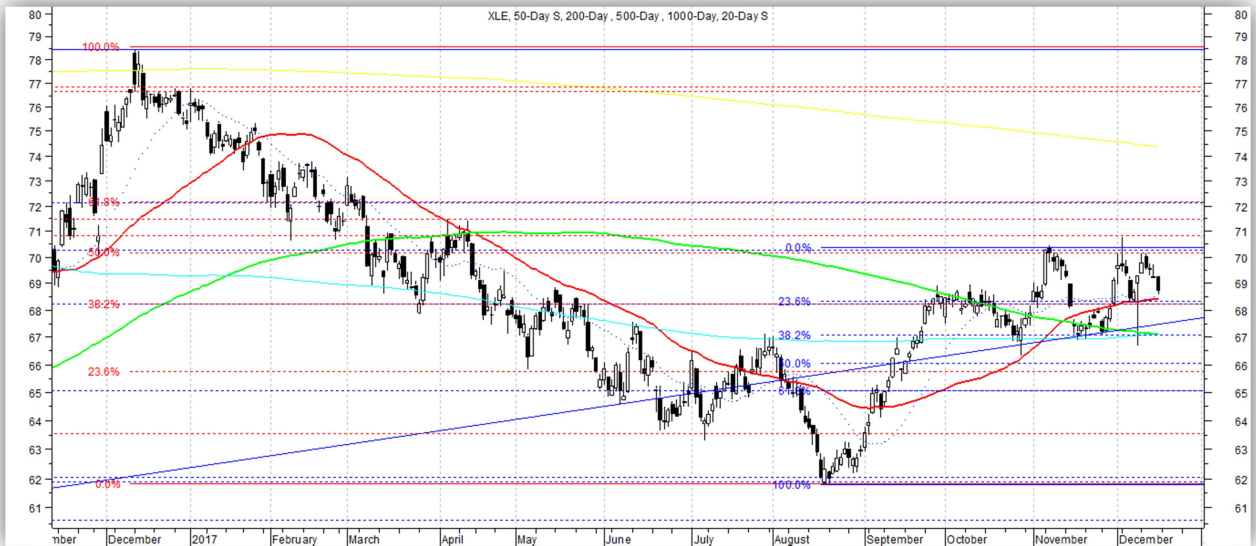
### Basic Materials Sector SPDR-XLB

Bullish. Testing all-time highs. A favored sector. Key support levels: 58, 56.70, 54.50, 52.75, 51, 50.70. Key resistance levels: 60.10.



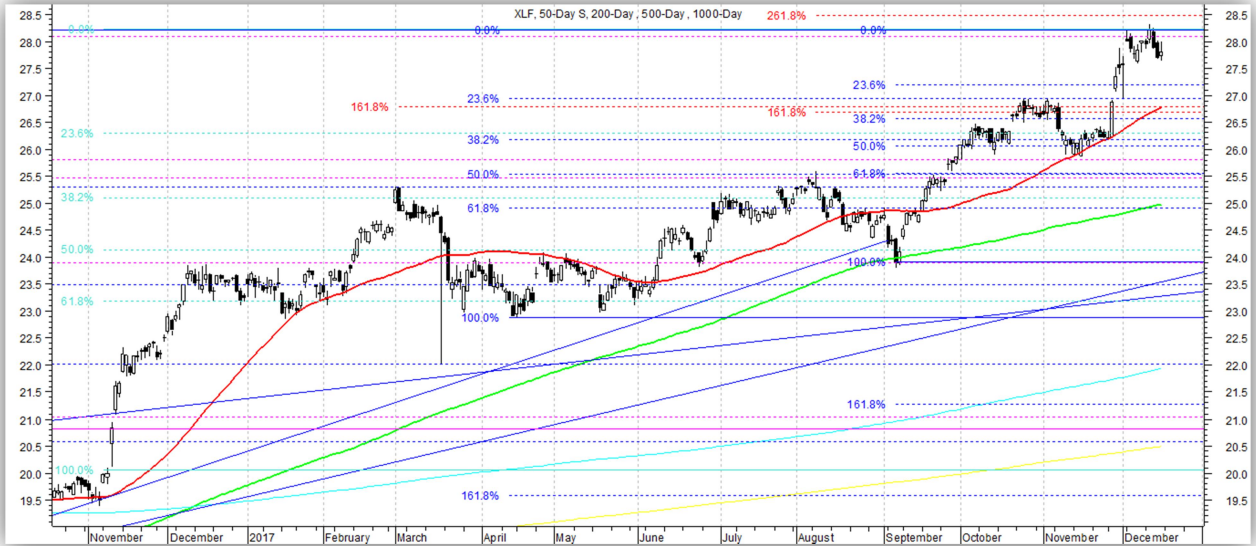
### Energy Sector SPDR-XLE

Bullish. Consolidating post-August bounce; look for upside resolution and moderate further upside. Key support levels: 68.25, 67.00, 66.10, 64.50, 61.90, 60.80. Key resistance levels: 70.25, 72.10, 76.50.



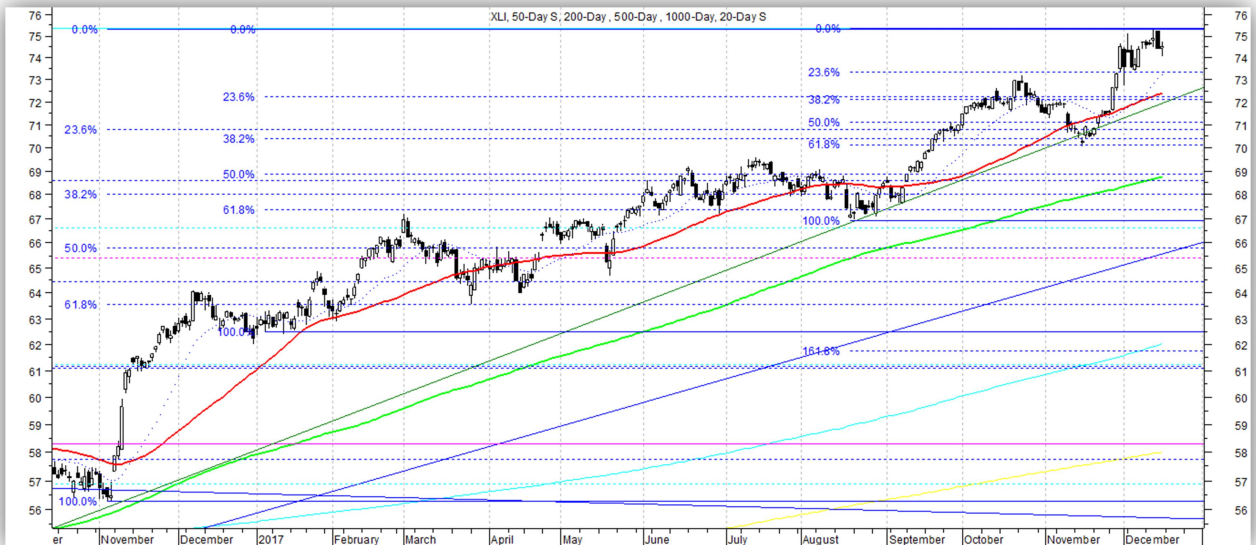
### Financial Sector SPDR-XLF

Bullish. Consolidating recent blast back to new highs. A favored sector. Key support levels: 26.90, 26.60, 26.10, 25.80, 25.40, 25, 24.30, 23.90, 23, 21.72, 20.80, 20.60, 19.50. Key resistance levels: 28.10, 28.50.



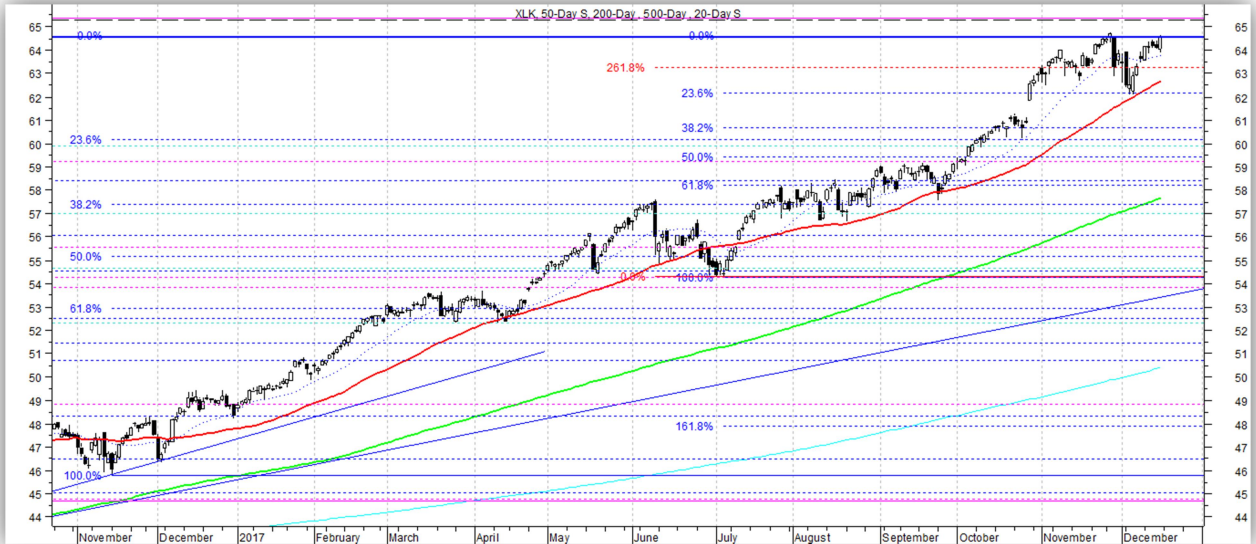
### Industrial Sector SPDR-XLI

Bullish. New all-time highs again; further intermediate-term upside expected. A favored sector. Key support levels: 73.40, 72.10, 70.50, 68.50, 66.80, 63, 61.75, 60.50. Key resistance levels: 75.40.



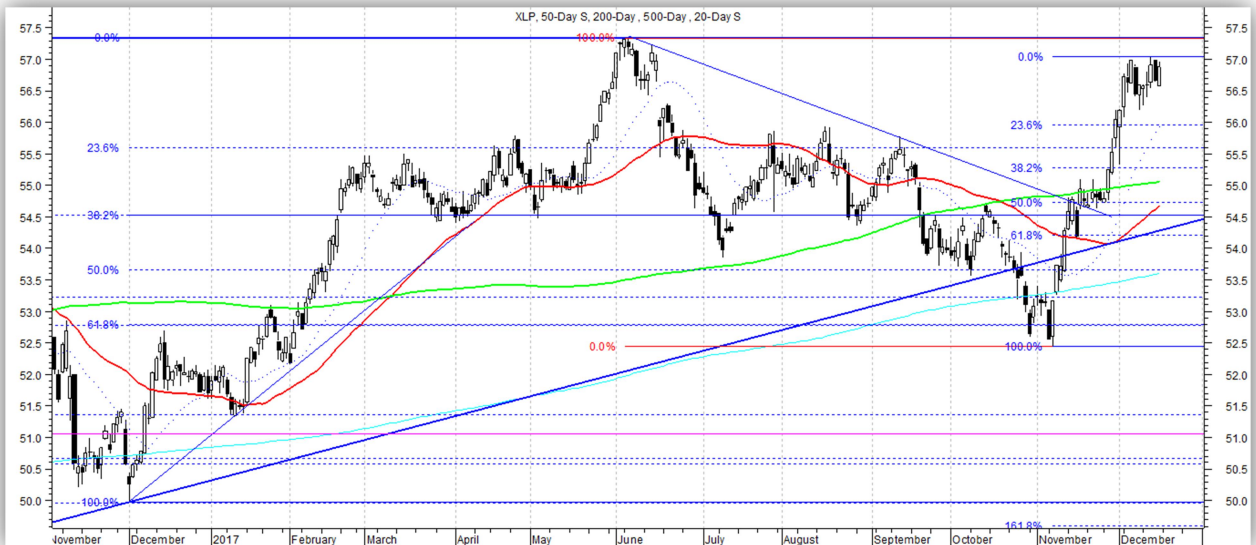
### Technology Sector SPDR-XLK

Bullish. Consolidating below 2000 all-time highs. A favored sector. Key support levels: 62.10, 60.50, 58.25, 56.80, 55.70, 53.10. Key resistance levels: 64.60, 65.35.



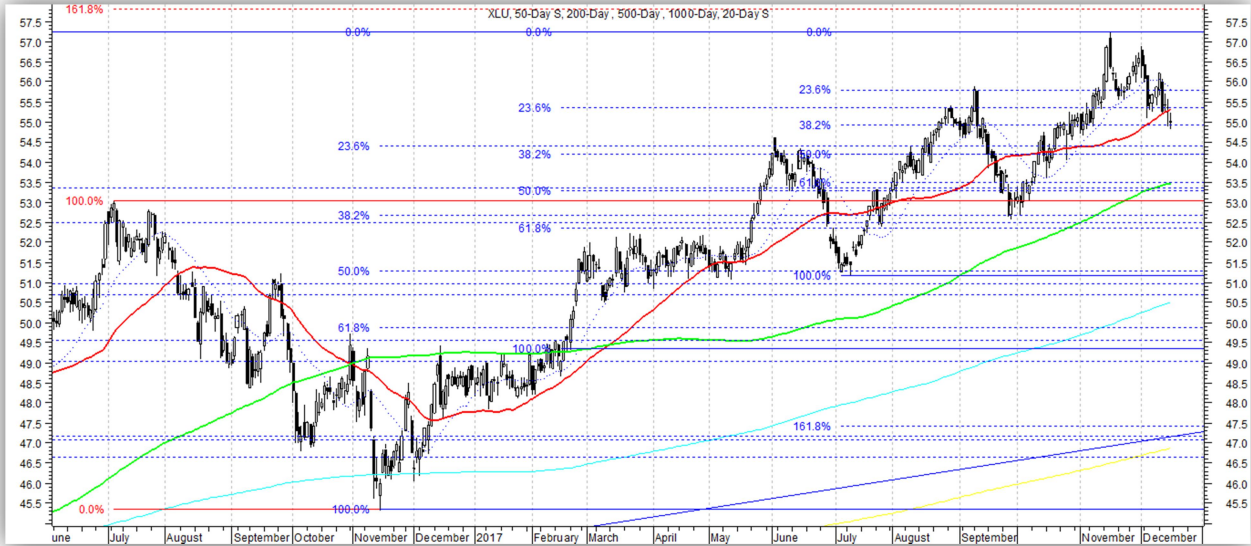
### Consumer Staples Sector SPDR-XLP

Bullish. Broke above near-term resistance, nearing June all-time highs. Key support levels: 56, 55.25, 54.85, 54.20, 53.70, 52.65, 51.35, 50.60. Key resistance levels: 57, 57.30.



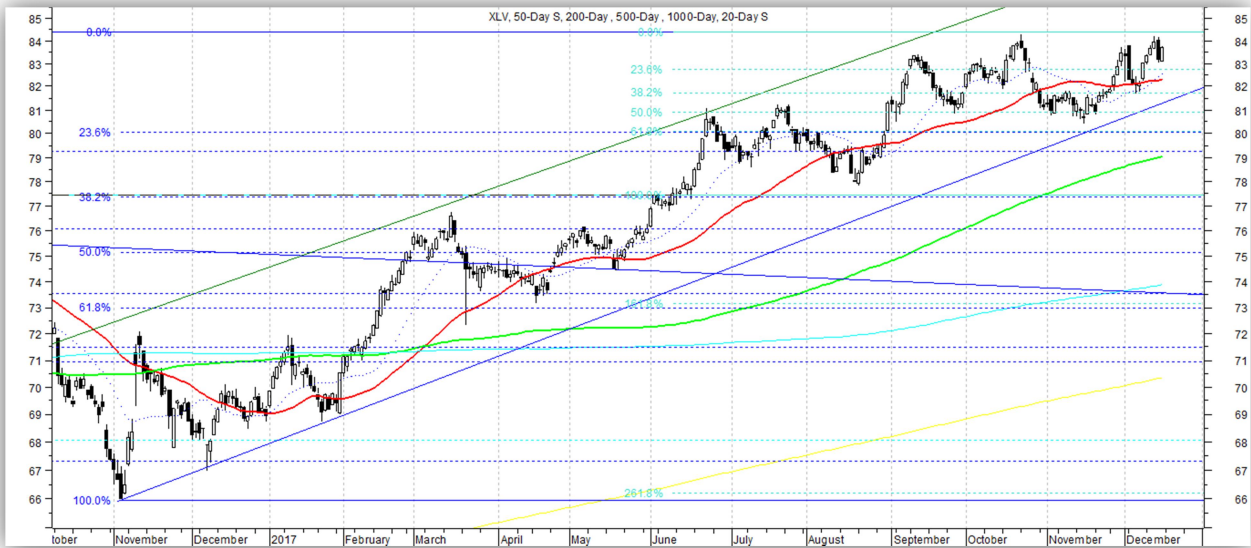
### Utility Sector SPDR-XLU

Bullish. Consolidating all-time highs, testing near-term support. Key support levels: 54.90, 54.20, 53.25, 52.60, 51.50, 49. Key resistance levels: 57.20, 57.80.



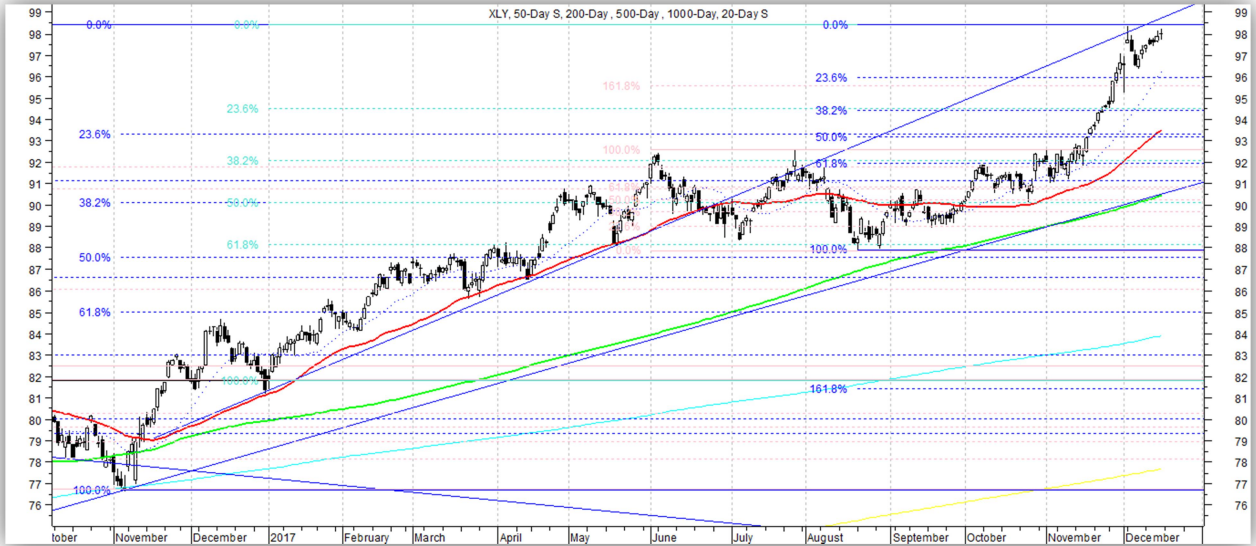
### Health Care Sector SPDR-XLV

Bullish. Bouncing back near all-time highs. A favored sector. Key support levels: 81.60, 80, 77.30, 75.70, 73.50, 71.80. Key resistance levels: 84-84.40.



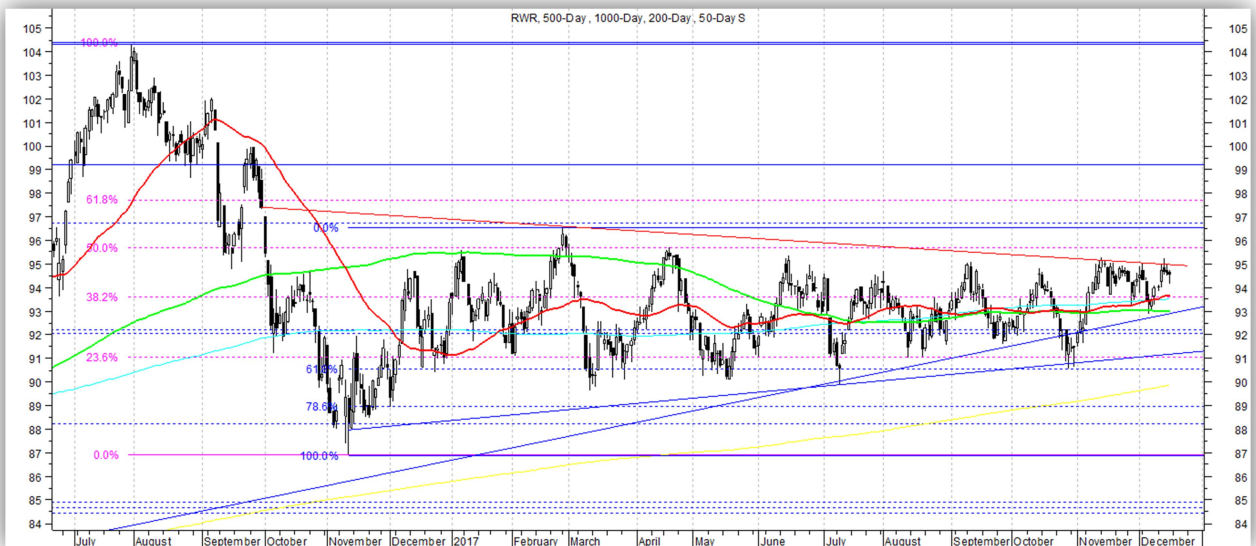
### Consumer Discretionary Sector SPDR-XLY

Bullish. Consolidating recent breakout to all-time highs. A favored sector. Key support levels: 96, 94.50, 93.25, 91.90, 91, 88, 86.50, 85.50, 83.75, 82. Key resistance levels: 98.50.



### REIT Sector SPDR-RWR

Bearish. Still stuck in 12-month range. Key support levels: 93, 90.50, 88.25, 86.90, 84.50. Key resistance levels: 95, 96.50, 97.70.



# Bonds, Commodities & Currencies

## 10-Year U.S. Treasury Yield

Bullish. Above post-2007 “regime-defining” down trendline. Long-term, upside favored and would be selling/shorting 10-Year bonds above 2.20%. Holding above short-term support ~2.31% now. Key support levels: 2.31, 2.26, 2.18-2.22, 2.13, 2.04, 1.98, 1.82. Key resistance levels: 2.40, 2.47, 2.62, 2.85, 3.40.



## 30-Year U.S. Treasury Yield

Bearish. Broke key support ~2.78%, opens downside to 2.65%. Key support levels: 2.65, 2.62, 2.52. Key resistance levels: 2.80, 2.87, 2.93, 2.99, 3.02-3.05, 3.20-3.25.

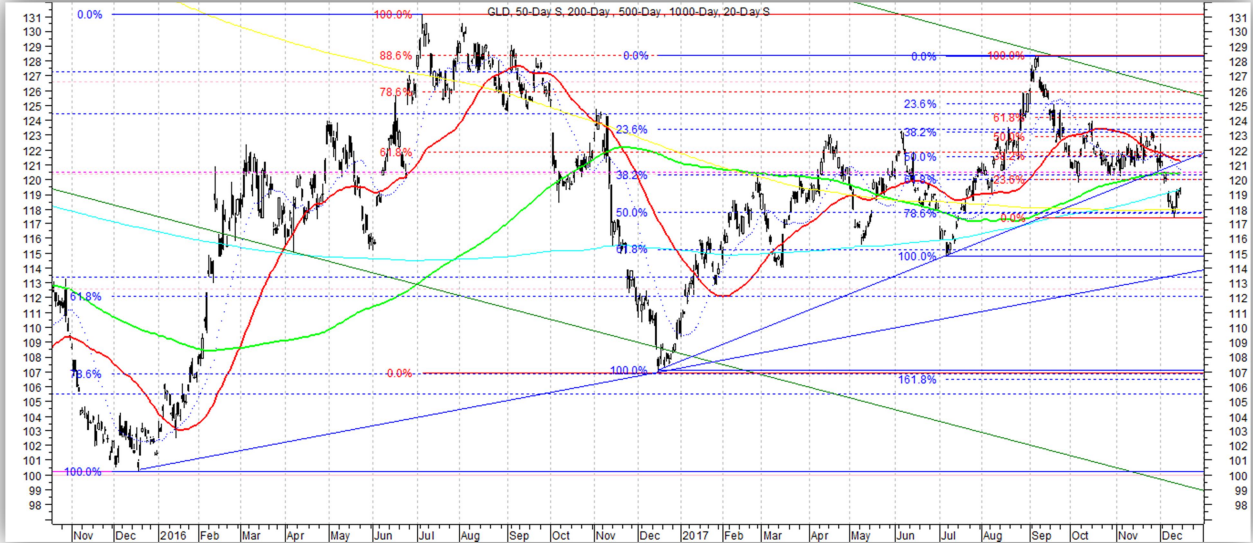






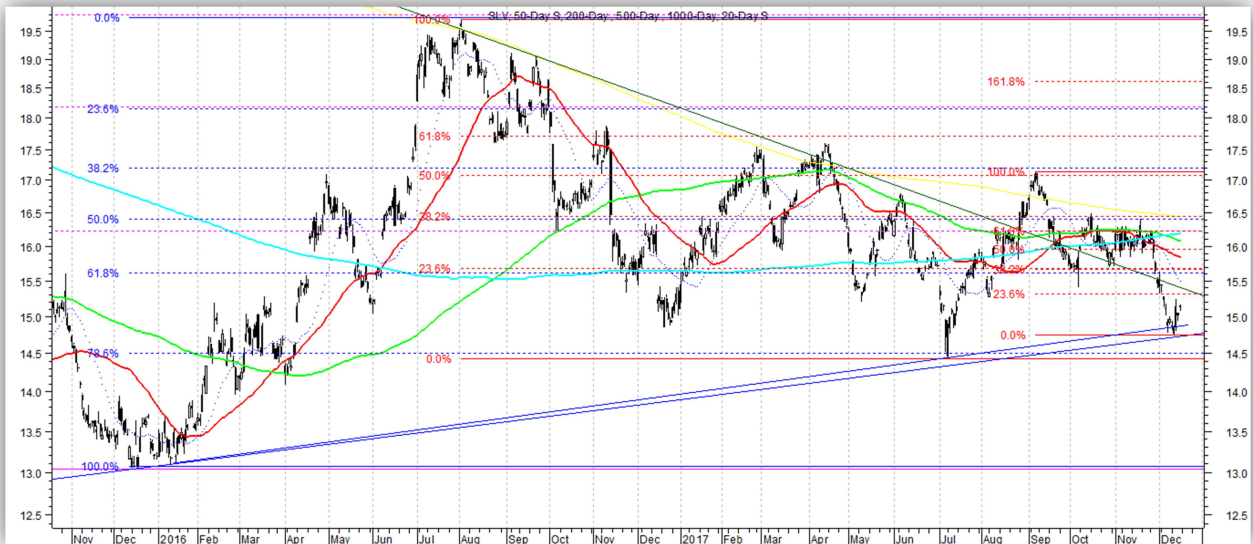
### SPDR Gold Trust (GLD)

Bearish. Testing near-term support ~117.70. Key support levels: 117.70, 115, 107. Key resistance levels: 120, 121.50, 123, 124.40, 126, 128.40, 130, 131.



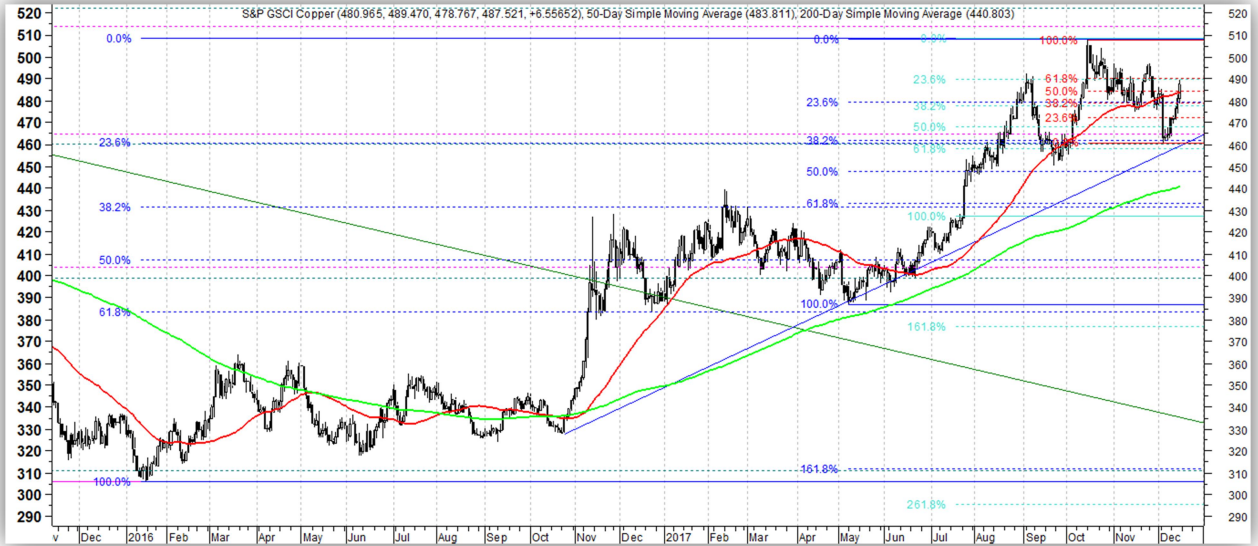
### iShares Silver Trust (SLV)

Bearish. Testing long-term Up trendline now. Key support levels: 14.75, 14.40, 13.05. Key resistance levels: 15.30, 15.65, 16.20, 16.40, 17.10, 17.60, 17.85, 18.15.



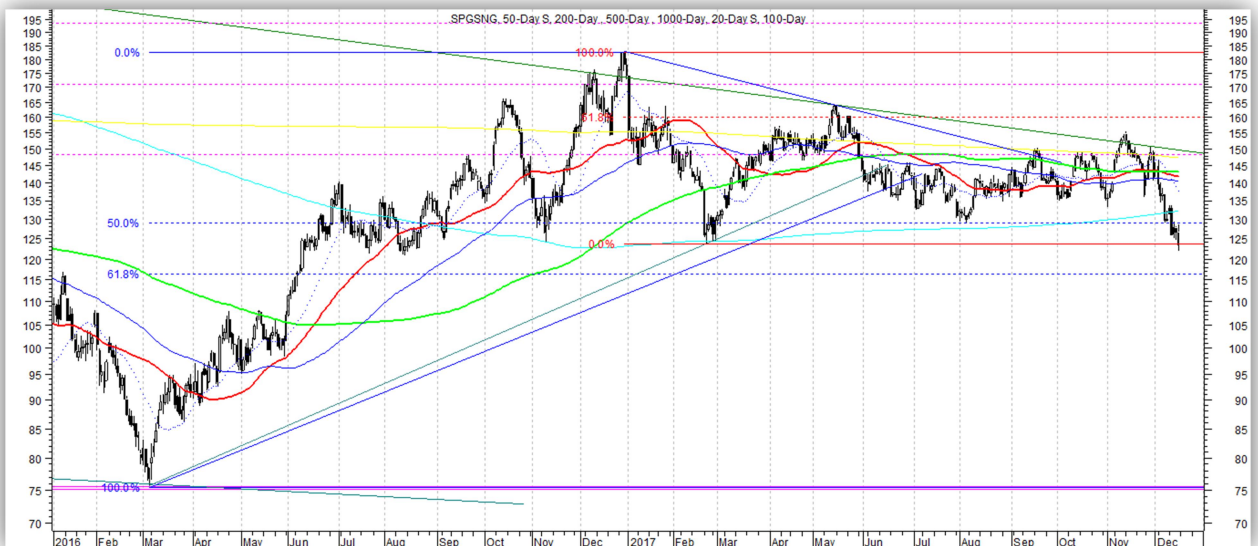
### S&P GSCI Copper Index

Bullish. Bounced off key support ~460; testing near-term resistance ~490. Key support levels: 460, 432, 387, 384, 372, 357. Key resistance levels: 490, 508, 512, 560.



### S&P GSCI Natural Gas Index

Bearish. Testing support ~124. Key support levels: 124, 116. Key resistance levels: 140, 148, 160, 182.50.



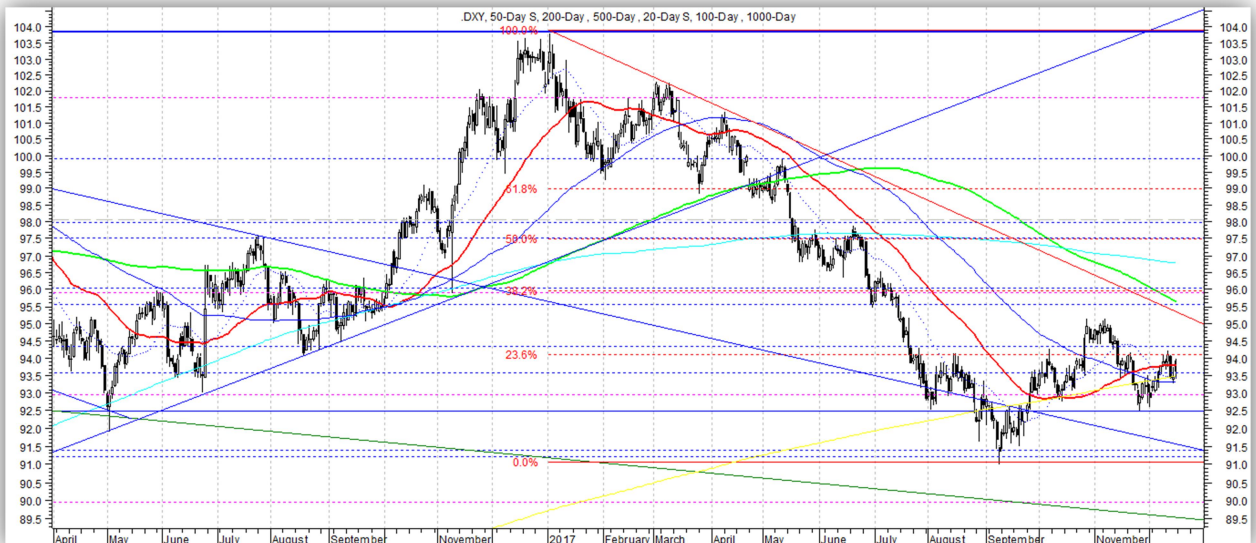
## S&P GSCI Grains Index

Bearish. Still holding near 12-month lows. Key support levels: 306, 297, 288. Key resistance levels: 315, 322, 330, 346, 370, 379.



## U.S. Dollar Index (DXY)

Bullish (barely). Bounced off near-term support ~92.50; testing near-term resistance ~94. Key support levels: 92.5, 91.25, 87.5. Key resistance levels: 94, 96, 97.50, 99.50, 103.80.



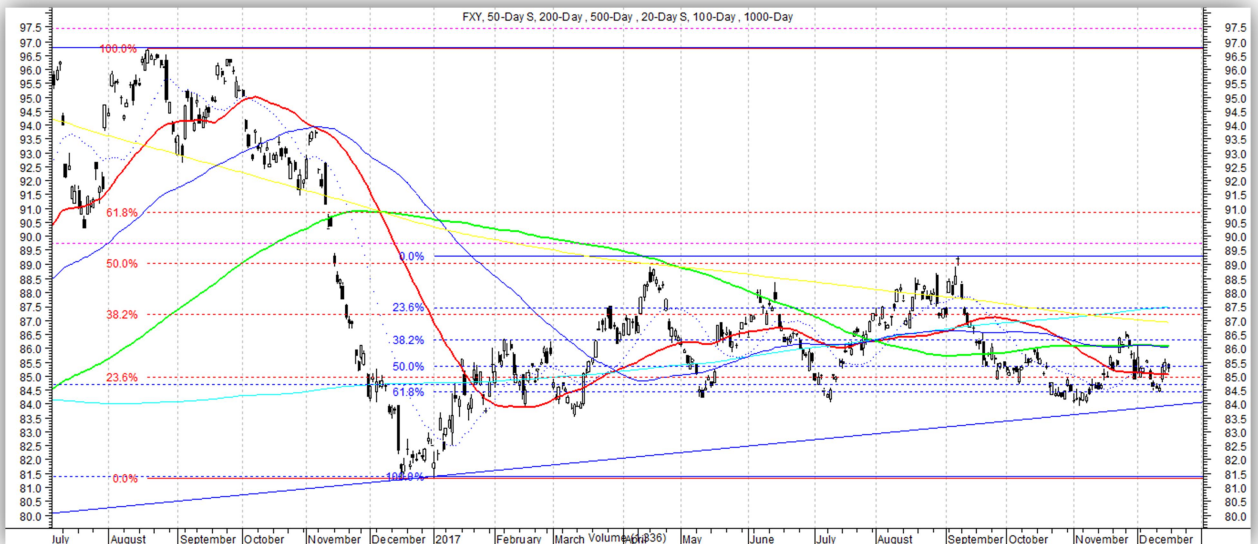
## Guggenheim CurrencyShares Euro Trust (FXE)

Bearish. Back below key ~114.70 level. Look for lower prices if holds below that level. Key support levels: 113.00, 112.60, 111.50, 110.25, 108.50, 106, 100.4. Key resistance levels: 114.70, 115.20, 116.30, 119, 123.50.



## Guggenheim CurrencyShares Yen Trust (FXJ)

Range-bound. Testing near support ~84. Key support levels: 84-84.40, 81.40. Key resistance levels: 86.25, 87.20, 89, 90.86.



## Relative Strength Rankings-1000 Most Liquid ETF's

Rankings based on JLFMI's proprietary Fund Selection Model. This is a quantitative model designed to identify securities most likely to outperform over intermediate-term, i.e., 2-6 months. Long candidates may be best chosen from top 10% of Rankings while bottom 40% may best be avoided.

Ticker	Security Name	Rank				
		12/15/2017	12/8/2017	12/1/2017	11/24/2017	11/17/2017
TECL	DIREXION DAILY TECHNO BULL 3X ETF	1	1	1	1	2
SOXL	DIREXION SEMICONDUCTOR BULL 3X ETF	2	2	2	2	1
LIT	GLOBAL X LITHIUM ETF	3	9	8	5	5
ROM	PROSHARES ULTRA TECHNOLOGY ETF	4	3	3	4	4
UDOW	PROSHARES ULTRAPRO DOW 30 ETF	5	5	4	3	3
TQQQ	PROSHARES ULTRAPRO QQQ ETF	6	4	5	6	8
FBGX	UBS ENHANCED LARGE CAP GROWTH ETN	7	7	7	10	8
QLD	PROSHARES ULTRA QQQ ETF	7	6	6	15	12
EWO	ISHARES MSCI AUSTRIA CAPPED ETF	9	8	19	7	6
UPRO	PROSHARES ULTRAPRO S&P 500 ETF	10	15	9	12	10
ROBO	ROBO GBL RBOTCS AND AUTMATN INDX ETF	11	15	17	23	14
PSI	POWERSHARE DYNAMIC SEMICONDUCTOR ETF	12	11	11	11	7
SPXL	DIREXION DAILY S&P 500 BULL 3X ETF	13	17	12	13	13
CQQQ	GUGGENHEIM CHINA TECHNOLOGY ETF	14	10	20	8	11
SMH	VANECK VECTORS SEMICONDUCTOR ETF	14	13	13	20	17
ITB	ISHARES US HOME CONSTRUCT ETF	16	22	36	40	16
IXN	ISHARES GLOBAL TECH ETF	17	14	15	17	21
SOXX	ISHARES PHLX SEMICONDUCTOR ETF	18	18	16	28	19
DDM	PROSHARES ULTRA DOW 30 ETF	19	20	14	13	15
IGV	ISHARES NORTH AMRN TECH SOFT ETF	20	12	10	9	18
PSJ	POWERSHARES DYNAMIC SOFTWARE ETF	21	27	18	16	20
EDC	DIREXION DAILY EMG MRKTS BULL 3X ETF	22	28	24	17	29
EMQQ	EMQQ EMRNG MKT INTRNT ECMRC ETF	23	26	44	22	25
FGM	FIRST TRUST GERMANY ALPHADEX ETF	24	37	55	67	31
QTEC	FIRST TST NASDAQ 100 TEC ID ETF	25	29	21	33	23
SOCL	GLOBAL X SOCIAL MEDIA INDEX ETF	26	23	29	26	24
IGM	ISHARES NORTH AMERICAN TECH ETF	27	30	22	33	35
KWEB	KRANESHARES CSI CHINA INTERNET ETF	28	19	33	21	22
MTUM	ISHARES EDGE MSCI USA MOMNTM ETF	28	39	30	35	36
SMIN	ISHARES MSCI INDIA SMALL CAP ETF	30	110	67	63	33
VGX	VANGUARD INFORMATION TECHNOLOGY ETF	31	34	26	37	39
GXC	SPDR S&P CHINA ETF	32	25	30	25	32
PXLG	POWERSHARES RSSL TP 200 PR GRWT ETF	32	41	40	55	37
FXL	FIRST TRUST TECHNOLOGY ALPHADEX ETF	34	32	28	42	33
REMX	VANCK VCTR RARE EARTH STRTG METL ETF	35	33	68	56	50
MTK	SPDR MORGAN STANLEY TECHNOLOGY ETF	36	35	50	31	28
FTEC	FIDELITY MSCI INFOR TECH INDX ETF	37	31	24	36	41
DBKO	DETSX X TRK MSCI STH KRA HDG EQY ETF	38	46	45	30	51
PGJ	POWERSHARES GOLDEN DRAGON ETF	38	38	56	45	26
XPP	PROSHARES ULTRA FTSE CHINA 50 ETF	40	21	23	17	75
EWY	ISHARES MSCI SOUTH KOREA CAP ETF	41	53	37	26	88
FNI	FIRST TRUST ISE CHINDIA INDEX ETF	41	49	50	61	40
IYW	ISHARES US TECHNOLOGY ETF	41	36	27	44	44
INCO	COLUMBIA INDIA CONSUMER ETF	44	76	111	85	68
WOOD	ISHARES GLOBAL TIMBER FORESTRY ETF	45	62	49	62	61
EEMA	ISHARES MSCI EMERGING MARKETS AS ETF	46	50	52	39	45
FDN	FIRST TRUST INTERNET INDEX CF ETF	47	46	34	52	49
BKF	ISHARES MSCI BRIC ETF	48	53	57	38	57

## The Lyons Share

SCIF	VANCK VCTR INDIA SML CAP INDX ETF	49	114	75	79	58
RYT	GUGGENHEIM S&P 500 EQUAL WE TECH ETF	50	48	38	48	54
YINN	DIREXION DLY FTSE CHNA BUL 3X ETF	51	24	32	24	81
CHIQ	GLOBAL X CHINA CONSUMER ETF	52	42	59	50	30
XLK	TECHNOLOGY SELECT SECTOR SPDR ETF	52	45	38	58	66
FCA	FIRST TRUST CHINA ALPHADEX ETF	54	40	47	29	38
PALL	ETFS PHYSICAL PALLADIUM SHARES ETF	54	50	41	126	94
AAXJ	ISHARES MSCI ALL COUNT ASA EX JP ETF	56	59	65	53	82
GMM	SPDR S&P EMERGING MARKETS ETF	57	52	68	46	55
INDL	DIREXN DAILY INDIA BUL 3X SHARES ETF	58	86	53	57	71
PNQI	POWERSHARES NASDAQ INTERNET ETF	59	44	35	48	27
FSZ	FIRST TRUST SWITZ ALPHADEX ETF	60	96	90	59	77
UYM	PROSHARES ULTRA BASIC MATERIALS ETF	61	93	66	75	52
INXX	COLUMBIA INDIA INFRASTRUCTR ETF	62	106	76	60	43
TAO	GUGGENHEIM CHINA REAL ESTATE ETF	63	42	73	42	53
EPI	WISDOMTREE INDIA EARNINGS ETF	64	155	95	83	93
GMF	SPDR S&P EMERGING ASIA PACIFIC ETF	65	55	61	51	65
ITA	ISHARES US AEROSPACE DEFENSE ETF	66	67	43	64	48
PTF	PWRSHRS DWA TECHNOLOGY MNTM ETF	67	57	41	74	70
QQQ	POWERSHARES QQQ TRUST SRS 1 ETF	67	56	54	98	86
PWB	POWERSHARES DYNAMIC LRE CAP GTH ETF	69	68	62	77	85
FAS	DIREXION DAILY FINANCIAL BULL 3X ETF	70	78	46	40	47
IWY	ISHARES RUSSELL TOP 200 GROWTH ETF	71	66	63	83	90
FPXI	FIRST TRUST INTERNATIONAL IPO ETF	72	81	70	46	59
EWN	ISHARES MSCI NETHERLANDS ETF	73	59	93	66	42
EEM	ISHARES MSCI EMERGING MARKETS ETF	74	99	81	67	91
IPKW	POWERSHARES INTL BUYBACK ACHIEV ETF	75	91	118	144	108
IEMG	ISHARES CORE MSCI EMERGING ETF	76	107	92	73	100
AFTY	CSOP FTSE CHINA A50 ETF	77	57	157	114	361
INP	BARCLAYS BANK IPATH MSCI INDIA ETN	78	135	100	88	86
PPA	POWERSHARES AEROSPACE & DEFENSE ETF	79	75	58	80	82
VIDI	VIDENT INTERNATIONAL EQUITY ETF	80	72	77	71	79
JKE	ISHARES MRNSTAR LRG CAP GRW ETF	81	79	81	104	111
RPG	GUGGENHEIM S&P 500 PURE GROWTH ETF	81	97	96	108	105
DZK	DIREXION DAILY DVP MRKTS BULL 3X ETF	83	63	63	69	62
QCLN	FIRST TST NASDAQ CLEAN ED ID ETF	84	80	97	110	109
ECH	ISHARES MSCI CHILE CAPPED ETF	85	118	74	53	64
PIN	POWERSHARES INDIA PORTFOLIO ETF	85	136	98	89	98
IWF	ISHARES RUSSELL 1000 GROWTH ETF	87	91	80	107	118
SCJ	ISHARES MSCI JAPAN SMALL CAP ETF	88	101	110	103	127
VONG	VANGUARD RUSSELL 1000 GROWTH ETF	89	88	85	105	114
EFO	PROSHARES ULTRA MSCI EAFE ETF	90	74	72	78	63
FNDC	SCHWAB FUNDAMENTAL INTL SMAL COM ETF	91	87	83	89	80
PIE	POWERSHARES DWA EMRG MKTS MOM ETF	92	105	120	93	124
FIGY	BARCLAYS GLOBAL HIGH YIELD ETN	93	137	79	99	69
MGK	VANGUARD MEGA CAP GROWTH ETF	93	95	86	113	113
BRF	VANECK VECTRS BRAZIL SML CAP ETF	95	144	147	70	45
EURL	DIREXZN DLY FTSE EURP BUL 3X SHS ETF	96	85	86	82	73
INDA	ISHARES MSCI INDIA INDEX ETF	97	183	126	117	126
PDN	PWRSHRS DEV MKTS EX US SMALL MID ETF	98	102	99	116	101
INDY	ISHARES INDIA 50 ETF	99	159	122	100	120
SKYY	FIRST TRUST ISE CLOUD COMP IDX ETF	100	83	71	89	114
HEEM	ISHARES CURRENCY HEDG MSCI EMERG ETF	101	125	103	92	135
XHE	SPDR S&P HEALTH CARE EQUIPMENT ETF	101	69	94	112	66
CHIX	GLOBAL X CHINA FINANCIALS ETF	103	70	91	64	155
EFNL	ISHARES MSCI FINLAND CAP INDEX ETF	104	156	142	157	101
ONEQ	FIDELITY NASDAQ COMPOSITE INDX ETF	104	97	83	140	117
ARGT	GLOBAL X MSCI ARGENTINA ETF	106	59	48	32	76
FRN	GUGGENHEIM FRONTIER MARKETS ETF	106	151	131	72	132
DBEM	DEUTH X TRK MSCI EMG MRK HDG EQY ETF	108	122	107	94	116
TLTE	FLEXSH MNGST EMR MKT FCTR TL IDX ETF	108	158	130	114	163
XAR	SPDR S&P AEROSPACE DEFENSE ETF	110	81	60	81	73

## The Lyons Share

EPOL	ISHARES MSCI POLAND CAPPED ETF	111	117	114	111	119
VUG	VANGUARD GROWTH ETF	111	114	111	138	130
SCHG	SCHWAB US LARGE CAP GROWTH ETF	113	123	115	150	156
FXI	ISHARES CHINA LARGE CAP ETF	114	84	88	76	172
EWK	ISHARES MSCI BELGIUM CAPPED ETF	115	154	192	158	95
CURE	DRXN DAILY HEALTHCRE BULL 3X SHS ETF	116	65	121	95	59
VOOG	VANGUARD S&P 500 GROWTH ETF	117	112	104	127	143
CUT	GUGGENHEIM MSCI GLOBAL TIMBER ETF	118	181	119	143	133
IVW	ISHARES S&P 500 GROWTH ETF	119	116	105	128	142
FHK	FIRST TRUST HONG KONG ALPHADEX ETF	120	71	155	152	125
EWQ	ISHARES MSCI FRANCE ETF	121	103	116	100	92
SCHE	SCHWAB EMERGING MARKETS EQUITY ETF	122	146	123	100	139
CGW	GUGGENHEIM S&P GLOBAL WATER IDX ETF	123	153	147	130	123
FTCS	FIRST TRUST CAPITAL STRENGTH ETF	123	130	123	120	157
MIDU	DIREXION DAILY MID CAP BULL 3X ETF	125	310	138	212	151
DFJ	WISDOMTREE JAPAN SMALCP DIVIDEND ETF	126	90	102	106	105
SPYG	SPDR S&P 500 GROWTH ETF	126	104	105	134	143
IHI	ISHARES US MEDICAL DEVICES ETF	128	73	132	87	77
PGAL	GLOBAL X FTSE PORTUGAL 20 ETF	128	99	117	96	89
XSD	SPDR S&P SEMICONDUCTOR ETF	130	108	108	129	216
VPL	VANGUARD FTSE PACIFIC ETF	131	142	152	148	176
CGO	CALAMOS GLOBAL TOTAL RETURN CF	132	112	113	139	209
EWG	ISHARES MSCI GERMANY ETF	133	133	162	154	139
EWH	ISHARES MSCI HONG KONG ETF	134	119	185	196	172
THD	ISHARES MSCI THAILAND CAPPED ETF	135	363	213	228	208
PIZ	POWERSHARES DWA DEV MKTS MOM ETF	136	111	144	123	133
SCHC	SCHWAB INTERNATNAL SMALL CAP EQY ETF	137	128	125	125	110
FPX	FIRST TRUST IPOX-100 INDEX ETF	138	134	136	140	137
EFG	ISHARES MSCI EAFE GROWTH ETF	139	139	144	156	149
RXL	PROSHARES ULTRA HEALTH CARE ETF	139	77	137	118	72
IOO	ISHARES GLOBAL 100 ETF	141	150	151	174	170
ACWX	ISHARES MSCI ACWI EX US ETF	142	172	161	146	153
HAO	GUGGENHEIM CHINA SMALL CAP ETF	143	129	128	97	97
VSS	VGRD FTSE ALL WRLD EX US SML CAP ETF	144	164	164	152	122
EDEN	ISHARES MSCI DEN CAP INV INDX ETF	145	120	129	122	99
EWS	ISHARES MSCI SINGAPORE ETF	146	132	204	169	246
XHB	SPDR S&P HOMEBUILDERS ETF	147	203	318	314	171
NGE	GLOBAL X MSCI NIGERIA ETF	148	182	275	291	289
DLS	WISDOMTREE INTL SMALLCP DIVIDEND ETF	149	126	108	109	84
FJP	FIRST TRUST JAPAN ALPHADEX ETF	149	140	160	236	263
VVO	VANGUARD FTSE EMERGING MARKETS ETF	151	222	181	124	185
ASHR	DET X TRK HRVT CSI 300 CHN CL A ETF	152	108	248	171	353
UYG	PROSHARES ULTRA FINANCIALS ETF	152	211	134	119	128
EWI	ISHARES MSCI ITALY CAPPED ETF	154	142	178	180	152
URTY	PROSHARES ULTRAPRO RUSSELL 2000 ETF	155	302	166	197	137
ACWI	ISHARES MSCI ACWI ETF	156	183	179	180	169
DIA	SPDR DOW JONES INDUSTRIAL AVRG ETF	157	159	146	140	158
EWT	ISHARES MSCI TAIWAN ETF	158	124	100	86	120
PTH	PWRSHRS DWA HEALTHCARE MNTM ETF	159	64	89	131	104
VXUS	VANGUARD TOTAL INTERNATIONAL STK ETF	160	196	197	178	180
EEMS	ISHARES MSCI EMER SMALL CAP ETF	161	227	217	137	201
TNA	DIREXION DAILY SMALL CAP BULL 3X ETF	162	298	174	211	141
PSCH	POWERSHARES S&P SMAL HEALTH PORT ETF	163	94	139	133	56
PEK	VANECK VCTR CHINAAMC CSI 300 ETF	164	127	276	186	343
PRN	PWRSHRS DWA INDUSTRIALS MNTM ETF	165	193	172	207	146
DRW	WISDOMTREE GLOBAL EX-US REAL EST ETF	166	192	215	172	188
PDP	POWERSHARES DWA MOMENTUM ETF	166	168	133	167	185
GVAL	CAMBRIA GLOBAL VALUE ETF	168	161	165	162	95
MXI	ISHARES GLOBAL MATERIALS ETF	169	178	184	209	191
DGRW	WISDOMTREE US QLT DIV GRW ETF	170	170	166	170	182
VEU	VANGUARD FTSE ALL WORLD EX US ETF	171	198	198	182	189
QQQX	NUVEEN NASDAQ 100 DYNAMIC OVRWRT CF	172	88	127	187	207



PSCU	POWERSHARES S&P SMALL UTILI PORT ETF	173	333	284	235	399
EIRL	ISHARES MSCI CAP INVEST MKT IDX ETF	174	167	212	212	178
PBW	POWERSHARES WILDER CLEAN ENERGY ETF	175	152	170	151	183
SCHF	SCHWAB INTERNATIONAL EQUITY ETF	176	147	159	147	148
IPAC	ISHARES CORE MSCI PACIFIC ETF	177	171	201	193	222
TAN	GUGGENHEIM SOLAR ETF	178	138	177	159	229
FIW	FIRST TRUST ISE WATER INDEX ETF	179	290	306	302	224
QEMM	SPDR MSCI EMRG MKT STRTGCFCTR ETF	180	157	152	132	211
CWI	SPDR MSCI ACWI EX-US ETF	181	144	166	159	162
BBRC	COLUMBIA BEYOND BRICS ETF	182	322	269	204	286
QQQE	DIREXION NASDAQ 100 EQL WGHT IDX ETF	183	185	141	347	176
EWX	SPDR S&P EMERGING MRKT SML CP ETF	184	208	202	136	136
IEFA	ISHARES CORE MSCI EAFE ETF	185	188	195	191	167
GWL	SPDR S&P WORLD EX US ETF	186	147	237	164	206
GWX	SPDR S&P INTERNATIONAL SMALL CAP ETF	187	163	182	165	185
IWP	ISHARES RUSSELL MID CAP GROWTH ETF	188	213	174	220	205
EXI	ISHARES GLOBAL INDUSTRIALS ETF	189	206	140	179	131
EWJ	ISHARES MSCI JAPAN ETF	190	179	199	218	264
IDOG	ALPS INTL SECTOR DIVIDEND DOGS ETF	190	195	226	234	200
HOML	UBS AG ETCS MON 2XD ISE HLDS ETN	192	172	206	187	184
URTH	ISHARES MSCI WORLD ETF	193	210	210	217	219
IEUR	ISHARES CORE MSCI EUROPE ETF	194	212	203	199	166
JPIN	JPMORGAN DVRSFD RTRN INTRNL EQT ETF	194	179	180	177	197
IFEU	ISHARES EUROPE DEVELOPED REL EST ETF	196	307	274	259	250
QQEW	FIRST TR NAS 100 EQL WEGHTD INDX ETF	197	176	143	342	179
VEA	VANGUARD FTSE DEVELOPED MARKETS ETF	197	208	219	208	204
FNDF	SCHWAB FUNDAMENTAL INL LARGE COM ETF	199	162	163	183	165
FM	ISHARES MSCI FRONTIER 100 ETF	200	289	351	120	164
MVV	PROSHARES ULTRA MIDCAP 400 ETF	200	384	223	326	257
IFV	FST TRT DSY WRGHT INTRNL FOCS 5 ETF	202	216	189	206	194
EWP	ISHARES MSCI SPAIN CAPPED ETF	203	201	252	279	174
FEZ	SPDR EURO STOXX 50 ETF	204	147	195	184	159
TOK	iShares MSCI Kokusai ETF	204	256	224	242	249
CRBN	ISHARES MSCI ACWI LW CRBN TGT ETF	206	206	200	203	221
DIM	WISDOMTREE INTL MIDCAP DIVIDEND ETF	207	190	174	173	147
DEF	GUGGENHEIM DEFENSIVE EQUITY ETF	208	238	221	192	293
CHAU	DIREXION DLY CSI 300 CHNA 2X SHS ETF	209	185	226	200	235
VGK	VANGUARD FTSE EUROPE ETF	210	240	225	224	174
PHO	POWERSHARES WATER RESC PORTFOLIO ETF	211	235	213	247	196
ULE	PROSHARES ULTRA EURO ETF	212	196	431	269	296
DFE	WISDOMTREE EUROPE SMLCP DIVIDEND ETF	213	165	150	148	107
PIO	POWERSHARES GLOBAL WATER ETF	214	200	191	233	191
VT	VANGUARD TOTAL WORLD STOCK ETF	214	214	194	201	214
VOT	VANGUARD MID CAP GROWTH ETF	216	249	253	309	281
JXI	ISHARES GLOBAL UTILITIES ETF	217	232	280	240	387
VV	VANGUARD LARGE CAP ETF	218	244	234	245	271
CHW	CALAMOS GLOBAL DYNAMIC INCOME CF	219	131	78	135	145
SCHX	SCHWAB US LARGE CAP ETF	220	247	231	250	274
TLTD	FLEXSH MRNGST DEV MKT EX US FCTR ETF	221	193	217	218	197
VOO	VANGUARD S&P 500 ETF	222	250	239	246	277
FNDE	SCHWAB FUNDA EMG MKTS LARGE COM ETF	223	241	169	163	272
HYXU	ISHARES INTRNTNL HI YLD BND ETF	223	189	316	238	236
LABU	DIREXION DALY S&P BIOTCH BULL 3X ETF	225	177	205	197	180
EZY	WISDOMTREE LARGE CAP VALUE ETF	226	270	241	230	306
PBD	POWERSHARES GLOBAL CLEAN ENERGY ETF	226	187	193	145	161
JKD	ISHARES MORNINGSTAR LARGE CAP ETF	228	191	187	215	226
IEV	ISHARES EUROPE ETF	229	255	240	243	190
MGC	VANGUARD MEGA CAP ETF	230	223	210	222	246
CFA	VICTORY CEMP US 500 VOLATILITY ETF	231	259	228	225	248
VNM	VANECK VECTORS VIETNAM ETF	231	270	322	272	377
EEMV	ISHR EDG MSCI MIN VOL EMG MKT ETF	233	269	256	194	270
ECON	COLUMBIA EMERNG MKTS CONSMR ETF	234	313	230	159	209

## The Lyons Share

CFO	VICTORY CEMP US 500 ENHNCD VLTTY ETF	235	266	231	226	254
PKB	POWERSHARES DYNAMIC BLDG CONSTRN ETF	236	278	403	483	229
EFA	ISHARES MSCI EAFE ETF	237	231	244	236	224
EUMV	ISHARES EDGE MSCI MIN VOL EUR ETF	237	235	264	210	227
IYJ	ISHARES US INDUSTRIALS ETF	237	280	185	216	212
XLG	GUGGENHEIM SP 500 TOP 50 ETF	240	169	188	195	238
FFTY	INNOVATOR IBD 50 ETF	241	220	263	252	240
VPU	VANGUARD UTILITIES ETF	242	338	334	261	508
EMFM	GLOBAL X NEXT EMERGING FRONTIER ETF	243	266	288	168	218
SCHB	SCHWAB US BROAD MARKET ETF	243	285	261	288	295
EWUS	ISHARES MSCI UK SMALL CAP ETF	245	284	220	228	195
DGRO	ISHARES CORE DIVIDEND GROWTH ETF	246	251	245	214	252
IQDY	FLEXSHS INTL QTY DIV DYN IND ETF	246	324	281	312	243
NORW	GLOBAL X MSCI NORWAY ETF	248	199	216	223	215
SCHD	SCHWAB US DIVIDEND EQUITY ETF	249	347	320	318	406
KLD	ISHARES MSCI USA ESG SELECT ETF	250	215	299	202	272
VNQI	VANGUARD GLBAL EX US REAL ESTATE ETF	251	295	297	232	282
EUFN	ISHARES MSCI EUROPE FINANCIALS ETF	252	260	362	278	191
IVV	ISHARES CORE S&P 500 ETF	252	242	236	248	276
MLPN	CREDIT SUS X LKS CHG MLP INFR ETN	252	205	305	227	267
IDU	ISHARES US UTILITIES ETF	255	342	355	271	514
DGS	WSDMTREE EMRG MKTS SMALLCAP DVD ETF	256	294	222	155	202
FUTY	FIDELITY MSCI UTILITIES INDX ETF	257	283	326	270	504
UWM	PROSHARES ULTRA RUSSELL 2000 ETF	257	392	268	329	223
QUAL	ISHARS EDG MSCI USA QTY FCTR ETF	259	253	250	243	280
VTI	VANGUARD TOTAL STOCK MARKET ETF	260	290	270	293	300
VIG	VANGUARD DIVIDEND APPRECIATION ETF	261	318	304	298	329
EFAV	ISHARE EDGE MSCI MIN VOL EAFE ETF	262	301	329	290	307
DGRE	WSDMTR EMRNG MKT QLT DIV GWTH ETF	263	265	266	166	236
RXI	ISHARES GLOBAL CONSUMER DISCRE ETF	263	320	294	386	384
XLB	SPDR FUND MATERIALS SELECT SECTR ETF	263	272	308	344	296
IYM	ISHARES US BASIC MATERIALS ETF	266	316	285	304	275
AOA	ISHARES CORE AGGRESSIVE ALLOCATI ETF	267	261	251	266	265
DSI	ISHARES MSCI KLD 400 SOCIAL INDX ETF	268	258	233	258	290
IWB	ISHARES RUSSELL 1000 ETF	268	263	246	274	288
DXJS	WISDOMTREE JAPAN HEDGED SC EQUITY ETF	270	175	149	248	234
VONE	VANGUARD RUSSELL 1000 ETF	271	266	238	267	283
SPY	SPDR S&P 500 ETF	272	220	242	253	278
PUI	PWRSHRS DWA UTILITIES MNTM ETF	273	389	395	343	528
IQDF	FLEXSHARES INTL QTY DIV INDEX ETF	274	332	301	302	284
DIVC	CITIGRP C TRKS MLR HWD STRA DIV ETN	275	235	277	250	257
OEF	ISHARES S&P 100 ETF	276	242	243	254	285
IYY	ISHARES DOW JONES US ETF	277	273	257	284	294
ITOT	ISHARES TOTAL US STOCK MARKET ETF	278	288	257	294	296
SPPP	SPROTT PHYSICAL PLATINUM PAL CF	279	247	208	371	423
XLU	SELECT SECTOR UTI SELECT SPDR ETF	279	281	351	265	516
IWV	ISHARES RUSSELL 3000 ETF	281	292	267	297	305
EPP	ISHARES MSCI PACIFIC EX JAPAN ETF	282	325	384	340	310
IVOG	VANGUARD S&P MID CAP 400 GROWTH ETF	283	328	271	335	332
SBIO	ALPS MEDICAL BREAKTHROUGHS ETF	284	174	183	292	150
GII	SPDR S&P GLOBAL INFRASTRUCTURE ETF	285	204	289	259	326
ENOR	ISHARES MSCI NORWAY CAP MKET ETF	286	278	286	298	287
IHDG	WISDOMTREE INTER HDG QLY DIV GRT ETF	287	218	156	175	244
FDD	FIRST TRST STOXX EUR SEL DVD INC ETF	288	352	342	360	311
BBC	BIOSHARES BIOTCHNLGY CLNCL TRALS ETF	289	277	309	276	317
URE	PROSHARES ULTRA REAL ESTATE ETF	290	438	334	400	536
TDIV	FIRST TR NASDAQ TECH DIV IDX ETF	291	314	259	398	459
EFAD	PROSHARES MSCI EAFE DVD GRWRS ETF	292	319	282	300	299
FBT	FIRST TRUST NYSE ARCA BIOTECH ID ETF	293	141	157	383	112
CNXT	VANCK VCTR CHINAAMC SME CHINEXT ETF	294	225	422	334	369
PXF	PWRSHS FTSE RAFI DVPD MKT EX US ETF	294	228	260	268	254
VAW	VANGUARD MATERIALS ETF	296	334	319	356	291

## The Lyons Share

QVAL	VALUESHARES U S QUANTITATIVE VAL ETF	297	453	518	497	507
CSD	GUGGENHEIM S&P SPIN OFF ETF	298	297	190	241	233
PTNQ	PACER TRENDPILOT 100 ETF	299	273	303	325	317
FKU	FIRST TRUST UK ALPHADEX ETF	300	396	309	350	319
PSL	PWRSHRS DWA CNSMR STPLS MNTM ETF	301	420	346	368	353
EUSC	WISDOMTREE EUR HDGD SMLCP EQT ETF	302	224	170	187	167
FMAT	FIDELITY MSCI MATERIALS INDX ETF	303	300	317	364	300
MDYG	SPDR S&P 400 MID CAP GROWTH ETF	304	351	315	382	358
IJK	ISHARES S&P MID CAP 400 GRWTH ETF	305	359	295	367	347
IDLV	POWERSHARES S&P INTERNATIONAL DE ETF	306	282	363	305	321
EELV	POWERSHARES S&P EMERGING MARKETS ETF	307	368	405	281	365
RDVY	FIRST TRST NASDAQ RNSG DVD ACHVS ETF	307	424	323	322	314
FDIS	FIDELITY MSCI CONS DISCR INDX ETF	309	381	351	467	440
SCHM	CHARLES SCHWAB US MC ETF	310	390	337	416	374
VBK	VANGUARD SMALL CAP GROWTH ETF	311	308	248	372	308
FV	FIRST DORSEY WRIGHT FOCUS 5 ETF	312	374	292	332	408
GREK	GLOBAL X MSCI GREECE ETF	313	225	229	275	257
WPS	ISHARES INTERNATIONAL DEV PRTY ETF	313	391	423	390	402
THRK	SPDR RUSSELL 3000 ETF	315	246	368	256	315
EPU	ISHARES MSCI ALL PERU CAPPED ETF	316	234	262	190	228
EWL	ISHARES MSCI SWITZERLAND CAP ETF	316	398	336	378	291
VCR	VANGUARD CONSUMER DISCRETIONARY ETF	318	421	370	473	449
IHF	ISHARES US HEALTHCARE PRO ETF	319	273	325	333	401
IQDE	FLEXSHS INTL QTY DIV DEF INDX ETF	320	398	390	311	335
ACWV	ISHARES EDGE MSCI MIN VOL GBL ETF	321	367	393	317	398
DWM	WISDOMTREE INTERNATIONAL EQY ETF	322	293	302	287	253
PEZ	PWRSHRS DWA CONSMR CYCLS MNTM ETF	323	402	379	406	399
USMV	ISHARES EDGE MSCI MIN VOL USA ETF	323	323	348	295	408
EWD	ISHARES MSCI SWEDEN ETF	325	286	271	205	154
GURU	GLOBAL X GURU INDEX ETF	326	244	207	255	229
RTM	GUGGENHEIM S&P 500 EQUAL WEI MAT ETF	326	263	333	381	327
SPHQ	POWERSHARES S P 500 QUALITY ETF	328	379	340	349	353
WBIG	WBI TACTICAL LCY ETF	329	353	307	283	367
FEU	SPDR STOXX EUROPE 50 ETF	330	261	295	316	256
KOL	VANECK VECTORS COAL ETF	330	233	255	286	395
IUSG	ISHARES CORE RUSSELL US GROWTH ETF	332	257	381	263	333
BFOR	BARRONS 400 ETF	333	340	279	358	269
IWO	ISHARES RUSSELL 2000 GROWTH ETF	333	303	271	362	260
XMLV	POWERSHARES S&P MIDCAP LOW VOL ETF	335	457	355	377	447
RFG	GUGGENHEIM S&P MIDCAP 400 PURE ETF	336	303	278	361	342
INTF	ISHARES EDG MSCI MLTFCR INTL ETF	337	321	374	370	336
MOAT	VANECK VCTR MORNGSTR WD MOAT ETF	338	251	314	313	241
VLUE	ISHARES EDG MSCI USA VAL FCTR ETF	339	346	349	407	376
KCE	SPDR S&P CAPITAL MARKETS ETF	340	337	351	279	323
SPLV	POWERSHARES S&P 500 LOW VOLAT ETF	341	358	372	327	430
KLDW	GAVEKAL KNWLDG LEADR DVLP WRLD ETF	342	315	367	348	339
XT	ISHARES EXPONENTIAL TECHNOLOGIES ETF	342	298	413	337	358
IBND	SPDR BLMBRG BARCLY INTL CRP ETF	344	311	488	373	437
MOO	VANECK VECTORS AGRIBUSINESS ETF	345	397	406	330	308
FXR	FIRST TR INDL PROD DRBL ALPHADEX ETF	346	368	293	385	319
PXH	POWERSHARES FTSE RAFI EMER MKTS ETF	346	342	290	257	372
VO	VANGUARD MID CAP ETF	348	417	408	413	389
QDEF	FLEXSHARES DEF QUAL DIV ETF	349	488	426	438	515
IAK	ISHARES US INSURANCE ETF	350	453	416	387	437
CDC	VICTORY CEMP US EQ INCM EHNCD ETF	351	455	401	396	489
XLY	SPDR FUND CONSUMER DISCRE SELECT ETF	352	368	376	474	482
AFK	VANECK VECTORS AFRICA INDEX ETF	353	254	378	310	427
IXG	ISHARES GLOBAL FINANCIALS ETF	353	362	324	239	245
GUR	SPDR S&P EMERGING EUROPE ETF	355	305	412	328	369
DBAW	DEUT X TRK MSCI AL WLD EX US HDG ETF	356	273	253	296	324
GAL	SPDR SSGA GLOBAL ALLOCATION ETF	356	339	332	374	369
FXO	FIRST TRUST FINANCIALS ALPHADEX ETF	358	462	400	353	425

## The Lyons Share

ALFA	ALPHACLONE ALTERNATIVE ALPHA ETF	359	325	311	418	313
JKG	ISHARES MORNINGSTAR MID CAP ETF	360	443	411	426	408
TILT	FLEXSHARES MORNINGSTAR US IDX ETF	360	413	385	432	390
FXD	FIRST TR CONS DSCRTNRY ALPHADDEX ETF	362	553	538	590	548
RSP	GUGGENHEIM S&P 500 EQUAL WEIGHT ETF	362	377	408	425	394
DVP	DEEP VALUE ETF	364	501	508	559	494
JJC	BRCLYS BK IPATH BLOOM COPPER SUB ETN	365	296	291	391	329
NOBL	PROSHARES S&P 500 DIV ARISTOCRAT ETF	366	387	428	358	363
IAI	ISHRS US BRKR DEALRS SCURTS EXCH ETF	367	424	449	335	373
IYH	ISHARES US HEALTHCARE ETF	368	229	372	307	217
RWL	OPPENHEIMER REV WGHTD LRG CP ETF	368	376	394	434	418
AOR	ISHARES CORE GROWTH ALLOCATION ETF	370	348	345	352	360
RYF	GUGGENHEIM S&P 500 EQUAL WEI FIN ETF	370	417	386	276	340
DOL	WISDOMTREE INTL LARGECP DIVIDEND ETF	372	329	329	357	328
HEWJ	ISHARES CURRENCY HEDGED MSCI JAP ETF	373	306	298	423	419
EWV	ISHARES MSCI MEXICO CAPPED ETF	374	541	425	220	242
DBEZ	DEUTSCH X TRCKR MSCI EUR HDG EQY ETF	375	330	300	337	321
IWR	ISHARES RUSSELL MID CAP ETF	375	432	392	439	420
DBB	POWERSHARES DB BASE METALS ETF	377	239	152	185	232
PFM	POWERSHARES DIVIDEND ACHIEVERS ETF	377	394	420	409	469
DLN	WISDOMTREE LARGECP DIVIDEND ETF	379	371	364	380	402
EFV	ISHARES MSCI EAFE VALUE ETF	379	349	383	378	331
GQRE	FLEXSHARES GLB QULY REAL EST IDX ETF	381	449	461	452	500
HEWU	ISHARES CURRENCY HEDGED MSCI GER ETF	382	311	445	355	388
IFGL	ISHARES INTERNATIONAL DEV RL EST ETF	383	451	484	478	484
HEWI	ISHARES CURRENCY HDGD MSCI ITLY ETF	384	327	377	400	392
VYM	VANGUARD HIGH DIVIDEND YIELD ETF	385	480	450	440	472
DBJP	DEUTSCH X TRK MSCI JPN HDG EQY ETF	386	353	344	458	456
VXF	VANGUARD EXTENDED MARKET ETF	386	447	382	445	381
VHT	VANGUARD HEALTH CARE ETF	388	230	343	308	203
RYH	GUGGENHEIM S&P 500 EQUAL WEIG HC ETF	389	217	328	263	213
SCHV	SCHWAB US LARGE CAP VALUE ETF	390	463	434	412	434
CSQ	CALAMOS STRATEGIC TOTAL RETURN CF	391	408	235	322	315
XLI	SELECT SECTOR INDUSTRIAL SPDR ETF	392	335	247	314	262
RTH	VANECK VECTORS RETAIL ETF	393	459	516	499	581
XBI	SPDR S&P BIOTECH ETF	394	121	135	300	101
FHLC	FIDELITY MSCI HEALTH CARE INDX ETF	395	202	349	320	197
WBIL	WBI TACTICAL LCS ETF	396	404	355	394	429
TMF	DIR DAILY 20+ YEAR TRSRY BULL 3X ETF	397	342	265	318	444
IPFF	ISHARES INTERNATIONAL PRF ETF	398	436	497	289	356
XSLV	POWERSHARES S&P SMALLCAP LOW VOL ETF	399	577	496	504	562
IYF	ISHARES US FINANCIALS ETF	400	430	399	331	386
XLV	SELECT SECTOR HEALTH CARE SPDR ETF	401	219	397	306	239
EWV	ISHARES MSCI MALAYSIA ETF	402	458	564	459	452
KXI	ISHARES GLOBAL CONSUMER STAP ETF	402	427	479	417	451
DTD	WISDOMTREE TOTAL DIVIDEND ETF	404	434	410	424	428
ILF	ISHARES LATIN AMERICA 40 ETF	405	483	402	231	268
VTV	VANGUARD VALUE ETF	406	487	458	437	467
FXZ	FIRST TRUST MATERIALS ALPHADDEX ETF	407	429	407	495	325
QDF	FLEXSHARES QUAL DIV ETF	408	545	486	483	534
CWB	SPDR BLMBERG BRCLY CONV SECT ETF	409	385	423	387	415
OEUR	O SHARES FTSE EUROPE QULTY DIVI ETF	410	375	388	368	345
FXE	GUGGENHEIM CURRENCYSHARES EURO ETF	411	366	539	464	479
EPHE	ISHARES MSCI PHILIPPINES ETF	412	439	515	493	501
FIDU	FIDELITY MSCI INDUSTRIALS INDX ETF	413	383	287	375	302
DOO	WISDOM TREE INTERNA DVD EX FINAN ETF	414	355	389	429	402
FNDB	SCHWAB FUNDAMENTAL US BROAD MKT ETF	415	485	469	480	497
EZM	WISDOMTREE MIDCAP EARNINGS ETF	416	522	451	470	442
FNDX	SCHWAB FUNDAMENTAL US LARGE CO ETF	417	444	451	467	476
HFXI	IQ 50 PERCENT HEDGED FTSE INTER ETF	418	406	430	444	417
FXEU	PWRSHARS EUR CRNCY HD LW VLTLTY ETF	419	363	441	414	443
FVD	FIRST TRUST VALUE DIVIDEND INDEX ETF	420	592	485	443	520

## The Lyons Share

KIE	SPDR S&P INSURANCE ETF	421	502	374	341	393
RZG	GUGGENHEIM S&P SMALLCAP 600 GR ETF	422	413	437	395	279
ADRD	BLDRS DEVELOPED MARKETS 100 ADR ETF	423	345	417	431	366
IYG	ISHARES US FINANCIAL SER ETF	423	428	380	281	345
EWU	ISHARES MSCI UNITED KINGDOM ETF	425	482	438	455	407
PWV	POWERSHARES DYNAMIC LARGE CAP ETF	426	365	329	320	349
FTLS	FIRST TRUST LONG SHORT EQUITY ETF	427	388	338	422	405
JPN	DUTSCH X TRCK JAP JPX NIK 400 EQ ETF	427	386	466	456	473
UGLD	CS VELOCITYSHARES 3X LONG GOLD ETN	429	286	283	273	465
PBP	POWERSHARES S&P 500 BUYWRITE ETF	430	519	745	760	724
IXJ	ISHARES GLOBAL HEALTHCARE ETF	431	317	390	364	251
DVYE	ISHARES EMERGING MARKETS DIV ETF	432	448	387	350	357
VIS	VANGUARD INDUSTRIALS ETF	432	437	312	403	312
DBEF	DEUTSCH X TRKS MSCI EAFE HDG EQY ETF	434	378	327	402	390
RYU	GUGGENHEIM S&P 500 EQUAL WEI UTI ETF	434	435	502	454	630
XRLV	PWRSHAR S&P 500 EX RAT SEN LW VL ETF	436	409	468	434	458
HEZU	ISHARES CRRNCY HDG MSCI EURZN ETF	437	350	312	345	337
EQAL	POWERSHARES RSSL 1000 EQL WT ETF	438	445	414	515	448
NFRA	FLEXSHAR STX GLOBAL BROAD INF ETF	438	474	475	471	521
IVOO	VANGUARD S&P MID CAP 400 ETF	440	509	447	492	471
EZA	ISHARES MSCI SOUTH AFRICA ETF	441	479	360	339	538
DBGR	DEUTSH X TRKS MSCI GRMNY HDG EQY ETF	442	405	358	405	412
VOE	VANGUARD MID CAP VALUE ETF	442	607	499	517	496
DEM	WISDOMTREE EMRG MRKT HG DIV ETF	444	441	347	362	411
GNR	SPDR S&P GLOBAL NATURAL RESOURCS ETF	444	361	456	466	439
EIDO	ISHARES MSCI INDONESIA ETF	446	532	432	393	352
VB	VANGUARD SMALL CAP ETF	447	499	444	497	457
IJH	ISHARES CORE S&P MID CAP ETF	448	516	461	502	475
IDV	ISHARES INTERNATIONAL SEL DIV ETF	449	532	478	462	380
RGI	GUGGENHEIM S&P 500 EQUAL WEIGHT ETF	450	416	371	419	302
IJT	ISHARES S&P SMLL CAP 600 GRTH ETF	451	372	481	409	436
IYC	ISHARES US CONSUMER SERVICES ETF	452	463	454	624	568
PICK	ISHARES MSCI GLL MET MIN PROD ETF	452	330	364	507	397
PICB	POWERSHARES INTL CORPORATE BOND ETF	454	407	512	430	480
FGD	FST TST DOW JNS GLBL SEL DVD IDX ETF	455	601	555	541	486
DBEU	DEUTSCH X TRKS MSCI ERP HDG EQY ETF	456	395	339	398	379
XLF	SELECT STR FINANCIAL SELECT SPDR ETF	456	411	421	324	351
DWX	SPDR S&P INTERNATIONAL DIVIDEND ETF	458	379	506	488	452
HEWP	ISHARES CURNCY HDG MSCI SPAIN ETF	459	419	473	460	368
VUSE	VIDENT CORE US EQUITY ETF	459	469	495	528	524
DTH	WISDOMTREE INTERNATIONAL HGH DIV ETF	461	372	396	404	341
PRF	POWERSHARE FTSE RAFI US 1000 POR ETF	462	460	470	489	487
DRN	DIREXION DAILY REAL EST BULL 3X ETF	463	719	490	623	720
VFH	VANGUARD FINANCIALS ETF	463	490	440	345	385
MDY	SPDR S&P MIDCAP 400 ETF	465	485	458	502	476
DXJ	WISDOMTREE JAPAN HEDGED EQUITY ETF	466	360	359	462	433
IDX	VANECK VECTR INDONESIA INDEX ETF	467	561	418	387	362
WBIE	WBI TACTICAL LCG ETF	468	470	442	465	505
HEFA	ISHARES CURRENCY HDG MSCI EAFE ETF	469	357	321	392	383
SLYG	SPDR S&P 600 SMALL CAP GROWTH ETF	470	518	500	469	423
PTLC	PACER TRENDPILOT 750 ETF	471	433	480	461	485
VIOO	VANGUARD S&P SMALL CAP 600 ETF	472	550	504	493	464
PHDG	POWERSHS SP 500 DWNSDE HEDGED ETF	473	412	503	513	414
LRGF	ISHARES EDGE MSCI MLTFCR USA ETF	474	465	498	475	517
PSP	POWRSHS GLBL LISTED PRIVATE EQTY ETF	475	543	404	415	347
SDY	SPDR S&P DIVIDEND ETF	476	511	513	482	519
PRFZ	PWRSHS FTSE RAFI US 1500 SML MID ETF	477	521	482	518	445
FNCL	FIDELITY MSCI FINANCIALS INDX ETF	478	466	461	353	396
MGV	VANGUARD MEGA CAP VALUE ETF	478	473	447	442	493
VTWO	VANGUARD RUSSELL 2000 ETF	480	526	477	487	431
IWC	ISHARES MICRO CAP ETF	481	517	472	491	421
IUSV	ISHARES CORE RUSSELL US VALUE ETF	482	401	504	433	470

## The Lyons Share

KNOW	DIREXION ALL CAP INSIDER SENTI ETF	482	536	522	582	545
EES	WISDOMTREE SMALLCAP EARNINGS ETF	484	530	493	510	468
SCHA	SCHWAB US SMALL CAP ETF	485	539	487	532	450
GXG	GLOBAL X MSCI COLOMBIA ETF	486	620	753	572	542
IGOV	ISHARES INTERNATIONAL TRSRY BND ETF	487	423	546	477	532
QQXT	FIRST TST NASDAQ 100 EX TE SC ID ETF	488	481	446	626	432
FXH	FIRST TRUST HEALTH CARE ALPHADEX ETF	489	336	340	421	344
WDIV	SPDR S&P GLOBAL DIVIDEND ETF	490	426	501	524	525
IWM	ISHARES RUSSELL 2000 ETF	491	524	491	500	435
AOM	ISHARES CORE MODERATE ALLOCATIN ETF	492	442	460	445	463
EWA	ISHARES MSCI AUSTRALIA ETF	493	580	532	483	446
WBIF	WBI TACTICAL LCV ETF	494	476	439	451	466
DXGE	WISDOMTREE GERMANY HEDGED ETF	495	415	364	411	412
SCIU	GLOBAL X SCIENTIFIC BETA US ETF	496	493	514	486	528
PKW	POWERSHARES BUYBACK ACHIEVERS ETF	497	450	397	445	378
DVY	ISHARES SELECT DIVIDEND ETF	498	422	518	450	494
IYK	ISHARES US CONSUMER GOODS ETF	499	597	560	555	539
IJR	ISHARES CORE S&P SMALL CAP ETF	500	586	527	535	513
UBT	PROSHARES ULTRA 20+ YR TREASURY ETF	501	452	415	457	555
HEDJ	WISDOMTREE EUROPE HEDGED EQTY ETF	502	398	361	384	375
UGL	PROSHARES ULTRA GOLD ETF	503	402	455	419	518
SYLD	CAMBRIA SHAREHOLDER YIELD ETF	504	548	492	449	490
UBR	PROSHARES ULTRA MSCI BRZ CPD ETF	505	585	493	261	220
DGP	DB GOLD DOUBLE LONG ETN	506	430	453	366	492
AIRR	FT RBA AMERICAN IND RENAISSANCE ETF	507	523	556	647	416
DON	WISDOMTREE MIDCAP DIVIDEND ETF	508	746	537	603	598
EWZ	ISHARES MSCI BRAZIL CAPPED ETF	508	597	524	376	350
CCD	CALAMOS DYNAMIC CONVERTIBLE CF	510	456	507	507	426
BWX	SPDR BLMBRG BRCLY INTL TRSRY ETF	511	468	589	476	551
GUNR	FLEXSHARES UPSTREAM NATURAL IDX ETF	512	477	550	576	547
RPV	GUGGENHEIM S&P 500 PURE VALUE ETF	512	532	534	537	546
BNO	UNITED STATES BRENT OIL ETF	514	527	517	552	649
HAP	VANECK VECTORS NATURAL RESRCS ETF	515	478	533	521	499
FNDA	SCHWAB FUNDAMENTAL US SMALL COM ETF	516	625	546	629	556
KCNY	KRANESHARES E CHN CMRCL PPR ETF	517	461	603	512	526
LEMB	ISHARES EMERG MRTS LOCAL CUR ETF	518	536	579	427	461
QYLD	RECON CAPITAL NAS 100 CVRD CAL ETF	519	470	563	554	531
EBND	SPDR BLMBRG BRCLY EMG MKT LCL ETF	520	497	570	397	460
SPHB	POWERSHARES S&P 500 HIGH BETA ETF	521	529	531	558	482
IVE	ISHARES S&P 500 VALUE ETF	522	578	526	530	540
BWZ	SPDR BLMBRG BARCLY SH TM INTL ETF	523	491	646	504	535
FAN	FIRST TRUST GLOBAL WIND ENERGY ETF	523	498	523	440	381
VOOV	VANGUARD S&P 500 VALUE ETF	525	569	520	521	530
IVOV	VANGUARD S&P MID CAP 400 VALUE ETF	526	676	567	644	580
IWS	ISHARES RUSSELL MID CAP VALUE ETF	526	718	566	675	607
PTMC	PACER TRENDPILOT 450 ETF	528	528	542	549	549
SLY	SPDR S&P 600 SMALL CAP ETF	529	563	564	567	540
EWC	ISHARES MSCI CANADA ETF	530	484	558	500	511
OUSA	O SHARES FTSE US QUALITY DIV ETF	531	496	546	509	536
DSUM	POWERSHARES CHINESE YUAN DIM SUM ETF	532	503	621	579	575
DTN	WISDOM TREE DIVIDEND EX FINAN ETF	532	669	580	677	627
CEW	WISDOMTREE EMERGING CUNCY STR ETF	534	564	602	506	558
JJN	BARCLAYS BK IPATH BLOOM NICKEL ETN	535	489	434	478	503
ICLN	ISHARES GLOBAL CLEAN ENERGY ETF	536	531	456	408	462
PSCT	POWERSHARES S&P SMALL TECH PORT ETF	536	550	427	285	304
FBZ	FIRST TRUST BRAZIL ALPHADEX ETF	538	779	725	578	481
EGPT	VANECK VECTORS EGYPT INDEX ETF	539	445	436	472	473
PID	POWERSHARES INTL DVDND ACHVRS ETF	540	504	525	566	498
AOK	ISHARES CORE CONSERVATIVE ALLOC ETF	541	512	508	496	533
DEW	WISDOMTREE GLOBAL HIGH DIVI ETF	542	539	510	510	510
PYZ	PWRSHRS DWA BSC MTRLN MNTM ETF	542	560	443	533	422
IWD	ISHARES RUSSELL 1000 VALUE ETF	544	639	558	570	566

## The Lyons Share

UGA	UNITED STATES GASOLINE ETF	545	472	489	684	706
CDL	VICTORY CEMP US LG CAP HIGH DIV ETF	546	558	599	560	604
VONV	VANGUARD RUSSELL 1000 VALUE ETF	547	640	542	564	560
COW	BACLYS BK IPATH BLOOM LIVESTOCK ETN	548	341	476	428	452
DBE	POWERSHARES DB ENERGY ETF	549	575	595	653	700
IWX	ISHARES RUSSELL TOP 200 VALUE ETF	549	611	546	543	553
RWX	SPDR DOW JONES INTER REAL ESTATE ETF	551	565	611	601	577
XTN	SPDR S&P TRANSPORTATION ETF	552	475	553	656	527
TWOK	SPDR RUSSELL 2000 ETF	553	494	591	531	568
CVY	GUGGENHEIM MULTI ASSET INCOME ETF	554	739	554	581	552
IJS	ISHARES S&P SMALL CAP 600 ETF	555	703	613	633	609
CYB	WISDOMTREE CHINESE YUAN STRAY ETF	556	440	628	660	582
FXB	GUGGE CUR BRITISH POUND STERLING ETF	557	624	637	596	570
VBR	VANGUARD SMALL CAP VALUE ETF	558	737	585	674	597
IYR	ISHARES US REAL ESTATE ETF	559	634	598	641	716
TTFS	ADVISORSHARES WILSHIRE BUYBACK ETF	560	682	587	648	616
RWK	OPPNHMR REVN WGHTD MD CP ETF	561	730	611	730	572
SPHD	PWRSHARS S P 500 HGH DIV LW VLTG ETF	562	655	624	672	657
CHY	CALAMOS CONVERTIBLE AND HIGH INC CF	563	583	467	657	559
EDIV	SPDR S&P EMERGING MARKETS DIVID ETF	564	500	483	480	502
UCO	PROSHARES ULTRA BLOOM CRUDE ETF	565	770	545	783	843
MNA	INDEXIQ MERGER ARBITRAGE ETF	566	559	536	539	592
IJJ	ISHARES S&P MID CAP 400 VALUE ETF	567	762	620	726	622
RCD	GUGGENHEIM S&P 500 EQUAL WEI CON ETF	568	771	738	808	710
MDYV	SPDR S&P 400 MID CAP VALUE ETF	569	732	622	722	616
JKF	ISHARES MRNSTAR LARGE CAP VAL ETF	570	600	540	543	576
EDV	VANGUARD EXTENDED DURATION ETF	571	548	529	545	613
SLYV	SPDR S&P 600 SMALL CAP VALUE ETF	572	616	625	611	610
IAU	ISHARES GOLD ETF	573	506	571	515	584
RFV	GUGGENHEIM S&P MIDCAP 400 PUE VA ETF	574	657	633	781	639
GLD	SPDR GOLD SHARES ETF	575	514	575	523	593
FREL	FIDELITY MSCI REAL ESTATE INDEX ETF	576	566	593	655	724
LMLP	UBS ETRACS MTLY PAY 2XLEVERAGED ETN	576	381	173	175	160
COPX	GLOBAL X COPPER MINERS ETF	578	494	465	527	488
WIP	SPDR CITI INTL GOV INFL PRTC BND ETF	579	467	604	490	543
OUNZ	VANECK MERK GOLD ETF	580	504	572	519	594
LWC	SPDR BLMBRG BRCLY LNG TRM CRP ETF	581	515	609	536	574
ZROZ	PIMCO 25YR ZERO CUPN US TRS INDX ETF	582	552	521	542	621
IHY	VANECK VECTORS INTL HG YLD BOND ETF	583	507	585	513	556
SGOL	ETF GOLD TRUST ETF	584	508	560	538	586
BIB	PROSHARES ULTRA NASDAQ BIOTECH ETF	585	166	208	569	129
PHYS	SPROTT PHYSICAL GOLD ETV UNT	586	536	574	546	596
DHS	WISDOMTREE HIGH DIVIDEND ETF	587	668	617	608	627
COMT	ISHARES COMMODITIES SELCT STRTGY ETF	588	594	605	688	662
SDOG	ALPS SECTOR DIVIDEND DOGS ETF	589	817	697	748	710
TUR	ISHARES MSCI TURKEY ETF	590	541	658	560	614
GHYG	ISHARES GLOBAL HIGH CORP BOND ETF	591	632	580	565	586
FXU	FIRST TRUST UTILITIES ALPHADEX ETF	592	820	690	706	818
HTUS	HULL TACTICAL US ETF	593	568	636	630	632
SMLV	SPDR RUSSELL 2000 LOW VOLATILITY ETF	594	745	663	753	665
QAI	IQ HEDGE MULTI-STRATEGY TRACKER ETF	595	524	576	593	599
DGL	POWERSHARES DB GOLD ETF	596	532	600	547	610
RHS	GUGGENHEIM S&P 500 EQUAL WE CONS ETF	597	655	757	746	701
ASHS	DET X TRK HRVT CSI 500 CHN CL A ETF	598	510	725	551	565
SRET	GLOBAL X SUPERDIVIDEND REIT ETF	598	687	595	571	600
XLP	SPDR FUND CONSUMER STAPLES ETF	600	587	709	713	694
FPE	FIRST TRUST PREFERRED SEC INCOME ETF	601	621	567	539	522
REZ	ISHARES RESI REAL ESTATE CAP ETF	602	652	583	636	718
FSTA	FIDELITY MSCI CONS STPLS INDX ETF	603	602	710	712	704
CLY	ISHARES 10+ YEAR CREDIT BOND ETF	604	590	552	525	615
HDV	ISHARES CORE HIGH DIVIDEND ETF	605	688	619	595	644
VDC	VANGUARD CONSUMER STAPLES ETF	606	706	732	738	722

FMB	FIRST TRUST MANAGED MUNICIPAL ETF	607	562	665	605	626
FXC	GUGGENHEIM CURR CANADIAN DOLLAR ETF	607	647	764	624	631
PSCF	POWERSHARES S&P SMALL FINAN PORT ETF	607	845	692	642	723
PEY	POWERSHARES HIGH YIELD DIVIDEND ETF	610	905	803	838	837
FDL	FIRST TRUST MORNINGSTAR DIV LDRS ETF	611	797	634	710	728
RLY	SPDR SSGA MULTI ASSET REAL RETUR ETF	612	578	640	703	678
CHI	CALAMOS CONVERTIBLE OPPO AND INCM CF	613	492	473	605	491
DBO	POWERSHARES DB OIL ETF	614	666	649	794	810
DVYA	ISHARES ASIA/PACIFIC DIVIDEND ETF	615	662	677	613	583
TLO	SPDR BLMBRG BRCLY LG TM TRSRY ETF	616	556	651	575	618
IWN	ISHARES RUSSELL 2000 VALUE ETF	617	813	687	702	650
PSCC	POWERSHARES S&P CONS STAP PORT ETF	617	703	530	519	561
ILTB	ISHARES CORE 10 YEAR USD BOND ETF	619	612	583	553	637
RJN	AB SVSK ELM LKD RGRS IDX TTL RET ETN	620	622	656	729	752
RYJ	GUGGENHEIM RYMD JAMES SB-1 EQTY ETF	621	607	569	662	577
XHS	SPDR S&P HEALTH CARE SERVICES ETF	621	581	544	602	511
REET	ISHARES GLOBAL REIT ETF	623	773	699	757	761
RVNU	DEUT X TRK MNCPL INFRSTRCTR RVNE ETF	624	567	643	615	636
FUND	SPROTT FOCUS TRUST ORD	625	356	511	555	452
DXJR	WISDOMTREE JAPAN HEDGED RL EST ETF	626	619	630	687	684
GRES	INDEXIQ GLOBAL RESOURCES ETF	627	596	610	617	564
GLTR	ETFS PHYSICAL PRECIOUS MTL BSKT ETF	628	557	591	620	655
JETS	US GLOBAL JETS ETF	629	546	573	631	588
WBLA	WBI TACTICAL SMG ETF	629	603	578	599	549
VNQ	VANGUARD REIT ETF	631	792	713	788	813
RSXJ	VANECK VECTOR RUSSIA SML CAP ETF	632	513	369	550	602
VCLT	VANGUARD LONG TERM COR BD ETF	632	607	541	529	624
OIL	BARCLYS IPATH NOTES LKD GAS OIL INDX	634	779	623	749	835
WBID	WBI TACTICAL SMS ETF	635	699	644	673	610
BLV	VANGUARD LONG TERM BOND ETF	636	614	587	562	640
ILB	PIMCO GLOBAL ADVANTAGE INFL ACTV ETF	636	572	666	600	634
LVL	GUGGENHEIM S&P GLBL DVD OPPS IDX ETF	636	642	551	611	554
DES	WISDOMTREE SMALLCAP DIVIDEND ETF	639	886	704	827	734
UST	PROSHARES ULTRA 7-10 YR TREASURY ETF	639	592	644	589	661
BTAL	QUANTSHARES US MARKET NEUTRAL AN ETF	641	628	723	582	745
TUTT	TUTTLE MANAGEMENT U.S. CORE ETF	642	576	671	620	635
VGLT	VANGUARD LONG TERM GOV BD ETF	642	613	614	597	659
IBB	ISHARES NASDAQ BIOTECHNOLOGY ETF	644	309	419	627	260
MLN	VANCK VCTR AMT FREE LNG MCPL ETF	645	570	660	584	667
HYD	VANECK VECTR HG YLD MCPL INDX ETF	646	582	631	574	620
EMLC	VANECK VCTR J P MORGN LCL BND ETF	647	675	708	548	590
ICF	ISHARES COHEN AND STEERS REIT ETF	648	752	673	728	783
SCHH	CHARLES SCHWAB US REIT ETF	648	803	727	758	814
FILL	ISHARES MSCI GLOBAL ENGY PROD ETF	650	645	737	773	736
RWO	SPDR DOW JONE GLOBAL REAL ESTATE ETF	651	700	688	720	749
BRZU	DIREXION BRAZIL BULL 3X SHARES ETF	652	717	638	445	333
FRI	FIRST TRUST S&P REIT INDEX ETF	652	789	711	755	804
CEFL	UBS ETRACS MONTH PAY 2XLEV CEF ETN	654	574	428	557	544
XMPT	VANECK VECTORS CEF MNCPL INCM ETF	654	702	698	669	674
DBP	POWERSHARES DB PRECIOUS METALS ETF	656	597	632	616	663
GSP	BARCLAYS TRAD NTS GSCI TOT RET IDX	656	641	682	698	747
PGF	POWERSHARES FINANCIAL PREFERRED ETF	658	678	627	644	623
BAB	POWERSHARES BUILD AMERICA ETF	659	547	642	585	632
ITM	VANCK VCTR AMT FR INTMDT MCPL ETF	660	573	662	598	647
FXG	FIRST TR CONSUMR STAPLS ALPHADEX ETF	661	815	784	824	793
GGOV	PROSHARES GERMAN SUB SOVEREIGN ETF	661	590	684	607	641
NIB	BARCLAYS BANK IPATH BLOOM COCOA ETN	661	637	880	891	758
DBC	POWERSHARES DB CMMDTY IDX TRCKNG ETF	664	646	667	700	730
MORT	VANECK VCTR MRTGAG REIT INCM ETF	664	698	535	526	441
CIBR	FIRST TRUST NASDAQ CYBRSCRTY ETF	666	618	607	562	563
DGRS	WISDMTRE US SMLCP QLT DIV GRW ETF	666	911	722	805	687
USL	UNITED STATES 12 MONTH OIL ETF	668	724	677	825	872



ELD	WISDOMTREE EMERGING MKT LOCAL ETF	669	695	718	609	603
SVVC	FIRSTHAND TECHNOLOGY VALUE CF	670	840	681	715	766
PEJ	POWERSHARES DYNIC LEISURE & ENTE ETF	671	684	590	793	670
PWZ	POWERSH CALIFOR AMT FRE MUNI BND ETF	671	554	655	643	644
CUBA	HERZFELD CARIBBEAN BASIN CF	673	670	616	649	585
MORL	UBS ETRACS 2XLEVERAGED REIT ETN	674	680	471	434	364
PCY	POWERSHARES EMRG MKTS SOVRGN DBT ETF	675	677	664	671	667
EMCB	WISDOMTREE EMERG MKTS CORP BOND ETF	676	603	648	661	689
AUNZ	WISDOMTREE AUSTRALIA NEW ZEALAND ETF	677	605	702	665	652
HACK	ETF MANG PUREFUNDS ISE CYBER SEC ETF	677	615	527	577	573
REM	ISHARES MORT REAL ESTATE CAP ETF	677	743	618	592	508
PCEF	POWERSHARES CEF INC COMPOSITE PF ETF	680	629	582	678	570
PBE	POWERSHARES BIOTECHNOLOGY GENOME ETF	681	410	464	533	266
USO	UNITED STATES OIL ETF	682	755	654	734	826
GSG	ISHARES S&P GSCI COMMODITY INDXD ETF	683	682	670	740	772
PDBC	PWRSHRS ACTVLY MNG OPTM YD DVRS ETF	683	678	691	719	775
TFI	SPDR NUVEEN BLMBRG BRCLY MNCP ETF	685	595	689	622	673
MLPS	UBS ETRACS LKD TO ALERIAN MLP ETN	686	583	717	761	756
CMF	ISHARES CALIFORNIA MUNI BOND ETF	687	610	696	613	685
PZA	POWERSHARE NATL AMT FRE MUNI BND ETF	688	606	703	680	709
VRP	POWERSHARES VARIABLE RATE PRF ETF	688	627	594	568	577
RUSL	DIREXION DAILY RSSIA BULL 3X SHS ETF	690	764	608	894	647
PGX	POWERSHARES PREFERRED PORTFOLIO ETF	691	696	629	635	625
KBE	SPDR S&P BANK ETF	692	843	700	609	653
PSK	SPDR WELLS FARGO PREFERRED STOCK ETF	693	571	639	594	605
UCI	E TRACS UBS BLOOMBERG CMCI ETN	694	653	679	723	676
VTEB	VANGUARD MUNI BND TAX EXEMPT ETF	695	617	705	676	666
ROOF	IQ US REAL ESTATE SMALL CAP ETF	696	907	767	854	851
SCO	PROSHARES ULTRST BLOM CRUDE ETF	697	554	659	638	506
RDIV	OPPENHMR REV WGHTRD ULTR DIV ETF	698	929	882	928	924
IYLD	ISHARES MORN MLTI ASS INC IND ETF	699	727	606	637	629
PJP	POWERSHARES DYNAMIC PHARMACALS ETF	699	393	562	452	337
SHYD	VANECK VCTRS SHT HY MNCLP INDEX ETF	701	667	749	705	715
BZF	WISDOMTREE BRAZILIAN REAL STR ETF	702	703	743	631	567
BSCO	GUGGENHEIM BLTSHRS 2024 CRPT BND ETF	703	635	686	587	697
YYY	YIELDSHARES HIGH INCOME ETF	704	672	615	618	595
AGGY	WSDMTR BRCLY US AGRGT BND ENHNC ETF	705	636	706	689	672
PLW	POWERSHARES 1 30 LADDERED TRSURY ETF	705	638	680	716	683
WBIB	WBI TACTICAL SMV ETF	707	799	667	784	663
QABA	FIRST TST NASDAQ ABA COM BK ID ETF	708	943	828	718	760
ITR	SPDR BLMBRG BRCLY INTRMDT TRM ETF	709	631	740	694	682
LQD	ISHARES IBOXB INVT GRADE BOND ETF	709	665	635	590	675
TLH	ISHARES 10-20 YEAR TSURY BOND ETF	711	644	685	670	707
CORP	PIMCO INVEST GRADE CORP BND IDX ETF	712	681	641	640	679
IAT	ISHARES US REGIONAL BANKS ETF	712	878	695	628	656
IXC	ISHARES GLOBAL ENERGY ETF	714	799	841	881	829
RJI	AB SVENSK ELEMENTS LKD RGR INDEX ETN	715	724	718	833	781
NFLT	NEWFLEET MLT SCTR UNCSTND BND ETF	716	691	742	732	692
IPW	SPDR SP INTERNA ENERGY SECTOR ETF	717	651	739	704	702
MUNI	PIMCO INTRMEDIATE MUNI BOND ACTV ETF	718	661	716	668	691
MUB	ISHARES NATIONAL MUNI BOND ETF	719	630	713	663	699
VWOB	VANGUARD EMERGING MKT GOVT BND ETF	719	740	672	654	669
FXI	GUGGENHEIM CURRENCY JAPANESE YEN ETF	721	633	788	644	713
KRE	SPDR S&P REGIONAL BANKING ETF	722	897	749	683	688
FTGC	FIRST TRUST GBL TTCL COMDTY STRA ETF	723	691	754	868	825
FXA	GUGGENHEIM CURRENCY AUS DOLLAR ETF	724	772	816	634	605
RWR	SPDR DOW JONES REIT ETF	725	797	758	811	838
TUTI	TUTTLE TCTCL MNGMT MLT STRGY INC ETF	726	649	754	709	695
IXP	ISHARES GLOBAL TELECOM ETF	727	819	740	779	833
WBIH	WBI TACTICAL HIGH INCOME ETF	727	746	595	699	681
QLTA	ISHARES AAA A RATED COR BOND ETF	729	670	674	649	693
VBND	VIDENT CORE US BOND STRATEGY ETF	730	643	711	686	727

BSCN	GUGGENHEIM BLTSHRS 2023 CRPT BND ETF	731	664	693	604	712
FXF	GUGGENHEIM CURRENCY SWISS FRANCF ETF	731	650	819	777	717
IBDQ	ISHR IBND DEC 2025 TRM ETF	733	660	653	659	660
PBS	POWERSHARES DYNAMIC MEDIA ETF	734	781	775	807	696
IPU	SPDR S&P INTL UTILITIES SECTOR ETF	735	648	765	701	704
VCIT	VANGUARD INTERMEDIATE TERM COR ETF	736	684	683	618	707
DJCI	E-TRACS LINKED TO THE BLM COM ETN	737	807	777	848	844
BIV	VANGUARD INTERMEDIATE TERM BOND ETF	738	696	746	681	732
IBDP	ISHARES IBONDS DEC 2024 TRM ETF	739	659	701	666	671
WBII	WBI TACTICAL INCOME ETF	740	721	713	736	733
DJP	BRCLYS BK IPATH BLOOM COMMODITY ETN	741	805	768	860	836
ANGL	VANECK VCTR FALN ANGL HY BND ETF	742	796	556	573	638
USCI	UNITED STATES COMMODITY INDEX ETF	743	674	667	841	779
UAE	ISHARES MSCI UAE CAPPED ETF	744	847	675	588	619
BNDX	VANGUARD TOTAL INTERNATIONAL BND ETF	745	626	721	685	765
XPH	SPDR S&P PHARMACEUTICALS ETF	746	520	657	664	522
RSX	VANECK VECTORS RUSSIA ETF	747	789	676	819	680
GBF	ISHARES GOVT CREDIT BOND ETF	748	693	733	679	731
JJE	BARCLAYS BNK IPATH BLOOM ENERGY ETN	749	701	937	916	893
IBDO	ISHARES IBONDS DEC 2023 TERM ETF	750	694	720	682	676
PFIG	PWRSHS FUND INV GRD CRP BND ETF	751	688	763	739	748
BOND	PIMCO TOTAL RETURN ACTIVE ETF	752	708	748	708	721
BSCM	GUGGENHEIM BULLET 2022 COR BOND ETF	753	707	728	649	729
AGG	ISHARES CORE US AGGREGATE BOND ETF	754	731	761	696	750
DWAS	POWERSHARES DWA SMALLCAP MOM ETF	754	708	792	761	737
KBWB	POWERSHARES KBW BANK ETF	754	708	792	761	737
KBWD	POWERSHARES KBW HIGH DVD YLD FNL ETF	754	708	792	761	737
KBWP	PWRSHS KBW PRPRTY & CASUALTY INS ETF	754	708	792	761	737
KBWR	POWERSHARES KBW REGIONAL BANKING ETF	754	708	792	761	737
KBWY	PWRSHS KBW PREM YLD EQTY REIT ETF	754	708	792	761	737
UDF	UNITED DEVELOPMENT IV ORD	754	708	792	761	737
UWTI	VELOCITYSHARES 3X LNG CRD OIL ETN	754	708	792	761	737
PXE	POWERSHARES DYNAMIC EXPLRTN PRDN ETF	763	850	840	935	909
BND	VANGUARD TOTAL BOND MARKET ETF	764	728	758	696	754
GOVT	ISHARES US TREASURY BOND ETF	764	722	771	725	770
SCHZ	SCHWAB US AGGREGATE BOND ETF	766	720	766	693	751
DSLX	CS VELOCITYSHARES 3X INV SILVER ETN	767	544	762	586	642
ERUS	ISHARES MSCI RUSSIA CAPPED ETF	768	859	806	921	811
IGN	ISHARES NORTH AMERICAN TECH ETF	769	781	577	737	600
EMHY	ISHARES EMERGING MARKETS HIGH ETF	770	787	706	652	703
LTPZ	PIMCO 15+ YEAR US TIPS INDEX ETF	771	673	651	754	764
CMBS	ISHARES CMBS ETF	772	738	776	749	786
IBDF	ISHARES IBONDS DEC 2016 TRM ETF	772	726	811	780	755
BSCL	GUGGENHEIM BULLET 2021 COR BOND ETF	774	736	772	714	753
RWJ	OPPENHEIMER REV WGHTD SMLLCP ETF	774	925	806	892	791
IHE	ISHARES US PHARMACEUTICALS ETF	776	588	650	639	476
DXPS	WISDOMTREE UNITED KINGDOM HEG EQ ETF	777	658	625	791	714
FBND	FIDELITY TOTAL BOND ETF	777	742	735	771	724
DIV	GLOBAL X SUPERDIVIDEND US ETF	779	860	805	743	783
IBDN	ISHARES IBONDS DEC 2022 TERM ETF	780	662	736	691	686
IBDM	ISHARES IBONDS DEC 2021 TERM ETF	781	735	770	723	698
SCHR	SCHWAB INTERMEDIATE TERM US TRS ETF	782	728	779	732	774
PHB	POWERSHARES FUNDAME H YIELD CORP ETF	783	836	730	820	799
VGIT	VANGUARD INTERMEDIATE TERM GOV ETF	783	734	782	727	773
DOD	ELEM DGS DW LKD DJ HGH SLCT 10 ETN	785	653	433	792	608
PFXF	VANCK VECTR PRF SECTR EX FNCL ETF	786	802	731	667	719
EIS	ISHARES MSCI ISRAEL CAPPED ETF	787	761	768	720	590
RIGS	RIVERFRONT STRATEGIC INCOME ETF	787	854	774	865	823
VMBS	VANGUARD MORTGAGE BACKED SEC ETF	789	765	800	707	787
AGZ	ISHARES AGENCY BOND ETF	790	744	811	752	791
EMLP	FIRST TRUST NORTH AMERICAN ENERGF ETF	790	920	911	927	934
EMB	ISHARES JPMORGAN USD MTS BOND ETF	792	741	827	798	778

GCC	WISDOMTREE CONTINUOUS COMMODITY INDEX ETV	793	871	890	907	897
IYT	ISHARES TRANSPORTATION AVERAGE ETF	794	588	601	711	589
SLX	VANECK VECTORS STEEL ETF	795	758	647	816	642
HYLS	FIRST TRUST TACTICAL HIGH YIELD ETF	796	864	814	846	762
RETL	DIREXION DAILY RETAIL BULL 3X SHARES ETF	796	994	970	951	990
GYEN	ADVISORSHARES GARTMAN GOLD YEN ETF	798	751	834	804	796
XRT	SPDR S&P RETAIL ETF	799	938	928	924	948
HYEM	VANECK VCTR EMRG MKT HG YLD BOND ETF	800	754	820	695	782
RZV	GUGGENHEIM S&P SMALLCAP 600 PURE ETF	801	937	866	930	925
PFF	ISHARES U.S. PREFERRED STOCK ETF	802	750	835	814	793
GVI	ISHARES INT GOV CREDIT BOND ETF	803	749	802	751	780
SST	SPDR BLMBRG BRCLY SHT TRM TRS ETF	804	758	831	813	800
TOTL	SPDR DOUBLELINE TTL RTRN TTCL ETF	805	776	791	717	757
HYMB	SPDR NUVEEN S&P HIGH YIELD MUNI ETF	806	778	808	800	806
SDIV	GLOBAL X SUPERDIVIDEND ETF	807	845	758	730	651
BSJG	GUGGENHEIM BULLETSHARES 2016 ETF	808	768	836	822	808
BSJK	GUGGENHEIM BULLS 2020 HIGH BOND ETF	809	838	777	755	777
ITE	SPDR BLMBRG BRCLY INTRMDT TM ETF	810	765	823	774	812
TPYP	TORTOISE NORTH AMERICAN PIPELINE ETF	810	803	838	822	802
GNMA	ISHARES GNMA BOND ETF	812	788	830	744	848
BSCK	GUGGENHEIM BULTSH 2020 CORP BOND ETF	813	753	822	740	798
SCHP	SCHWAB US TIPS ETF	814	756	788	799	831
BSJJ	GUGGENHEIM BULLS 2019 HIGH BOND ETF	815	825	786	759	788
SMB	VANCK VCTR AMT FREE MCPL INDX ETF	816	723	790	772	776
BSJL	GUGG BLTSHS 2021 HG YLD CRP BND ETF	817	855	773	775	790
DIVY	REALITY SHARES DIVS ETF	818	757	818	761	766
TIPZ	PIMCO BROAD US TIPS INDEX ETF	819	733	785	817	824
GSC	GS S&P GSCI ENHA COMM RET STRA ETN	820	686	908	775	879
PSAU	PWRSHS GLOBAL GOLD & PREC MET ETF	821	760	801	692	646
RING	ISHARES MSCI GLO GOLD MINERS ETF	821	775	852	826	809
SCPB	SPDR BLMBRG BARCLY SHT TRM CP ETF	821	801	844	838	828
HYG	ISHARES IBOX HIGH YIELD BOND ETF	824	858	729	789	807
IBDL	ISHARES IBONDS DEC 2020 TRM ETF	825	769	809	740	796
FLTB	FIDELITY LIMITED TERM BOND ETF	826	777	810	790	785
IBMI	ISHARES IBND SEP 2020 TRM MUN BND ETF	827	762	804	745	769
IGHG	PROSHARES INVT GD INT RAT HED ETF	828	794	724	580	690
VTIP	VANGUARD SHRT INF PROT SEC INDEX ETF	829	784	848	840	847
SOYB	TEUCRIUM SOYBEAN ETF	830	925	923	933	909
SHM	SPDR NVN BLMBRG BRCLY SHT TM ETF	831	748	817	785	771
BSJM	GUGG BLTSHS 2022 HG YLD CPT BND ETF	832	891	782	802	841
CRED	ISHARES US CREDIT BOND ETF	833	808	862	854	840
FCOM	FIDELITY MSCI TELECOM SERV INDX ETF	834	913	734	849	867
VCSH	VANGUARD SHORT TERM CORP BOND ETF	834	805	825	786	802
TIP	ISHARES TIPS BOND ETF	836	767	811	797	831
DXJF	WISDOMTREE JAPAN HEDGED FNCLS ETF	837	810	660	746	658
DBS	POWERSHARES DB SILVER ETF	838	825	781	842	830
GDX	VANECK VECTORS GOLD MINERS ETF	839	773	821	690	654
MBG	SPDR BLMBRG BRCLY MRTG BKD BD ETF	839	829	831	735	850
FLTR	VANCK VCTRS INVST GRD FLOTNG ETF	841	822	849	834	827
HYLD	PERITUS HIGH YIELD ETF	842	816	751	801	734
JNK	SPDR BLMBRG BRCLY HG YLD BND ETF	843	862	751	786	817
BSV	VANGUARD SHORT-TERM BOND ETF	844	823	842	796	848
SIVR	ETF SILVER TRUST ETF	844	785	746	802	793
SLV	ISHARES SILVER TRUST ETF	846	795	756	811	801
PPLT	ETF PHYSICAL PLATINUM SHARES ETF	847	862	851	882	903
SUB	ISHARES SHORT TERM NTNL MUN BND ETF	847	789	839	810	820
WBIC	WBI TACTICAL SMY ETF	849	908	826	876	866
MINC	ADVISORSHARES NEWFLET MUL SEC ETF	850	847	856	856	821
BSCG	GUGGENHEIM BLSHS 2016 CORP BND ETF	851	827	868	870	855
IPE	SPDR BLOOMBERG BARCLAYS TIPS ETF	851	793	824	818	838
TIPX	SPDR BLMBRG BRCLY 1 10 YR TIP ETF	853	812	860	830	873
PXMV	POWERSHARES RSSL MDPC PR VAL ETF	854	949	858	948	942

GSY	GUGGENHEIM SHORT DURATION ETF	855	824	863	849	855
IBDC	ISHARES IBONDS MAR 2020 TERM ETF	855	811	829	778	804
HYS	PIMCO 0-5 YEAR HIGH YLD BND IDX ETF	857	880	786	815	844
FTSM	FIRST TRUST ENHANCED SHORT MTRTY ETF	858	844	874	872	861
HVPW	US EQY HIGH VOLATILITY PW IND ETF	859	831	863	859	860
FTSL	FIRST TRUST SENIOR LOAN ETF	860	918	889	917	879
FLRN	SPDR BLMBRG BRCLY INV GR FLTN ETF	861	833	865	857	855
PSLV	SPROTT PHYSICAL SILVER CF	862	809	780	831	814
MINT	PIMCO ENHANCED SHRT MATURTY ACTV ETF	863	834	867	852	854
FLOT	ISHARES FLOATING RATE BOND ETF	864	835	869	853	859
IBDK	ISHARES IBONDS DEC 2019 TERM ETF	865	830	849	805	746
PVI	POWERSHARES VRDO TAX FREE WEEKLY ETF	866	872	891	889	864
BAL	BARCLAYS BK IPATH BLOOM COTN SUB ETN	867	690	940	944	931
BSCH	GUGGENHEIM BLLSHS 2017 CORP BND ETF	868	856	880	871	894
IBCC	ISHR IBND MAR 2018 TRM EX FNNCL ETF	868	836	886	836	882
RRF	WISDOMTREE GLOBAL REAL RETURN ETF	868	840	873	867	876
TDTF	FLEXSHARES IBOXX 5 YR TIPS IDX ETF	868	828	852	842	873
IBMH	ISHRS IBND SEP 2019 TRM MUN BND ETF	872	783	852	809	819
BKLN	POWERSHARES SENIOR LOAN ETF	873	909	870	918	920
DBA	POWERSHARES DB AGRICULTURE ETF	874	903	921	912	906
PBJ	POWERSHARES DYN FOOD&BEVERAGE ETF	875	918	844	879	894
NEAR	ISHARES SHORT MATURITY BOND ETF	876	856	877	864	875
UNL	UNITED STATES 12 MT NATURAL GAS ETF	877	885	935	940	852
BIL	SPDR BLMBRG BRCLY 1 3 MNTH T ETF	878	866	884	876	884
BSCJ	GUGGENHEIM BULTSH 2019 CORP BOND ETF	878	840	855	820	842
IBDH	ISHARES IBONDS DEC 2018 TRM ETF	880	838	878	851	863
PST	PROSHARES ULTRASHORT LEHMAN 7-10 ETF	881	851	904	898	855
SGDM	SPROTT GOLD MINERS ETF	881	817	843	794	762
ULST	SPDR SSGA ULTRA SHORT TERM BOND ETF	883	869	871	875	885
CIU	ISHARES INTERM CREDIT BOND ETF	884	851	894	883	889
IBCD	ISHRS IBND MAR 2020 TRM EX FNNCL ETF	885	786	846	782	834
HDLV	UBS ETRACS PAY 2X US HG DIV LOW ETN	886	936	847	847	862
CORN	TEUCRIUM CORN ETF	887	930	929	925	921
CHAD	DIREXION DLY CSI 300 CHN A BR 1X ETF	888	868	892	878	867
ISTB	ISHARES CORE 1 5 YEAR USD BOND ETF	889	865	901	894	894
RUSS	DIREXION DAILY RUSSIA BR 3X SHS ETF	890	623	908	866	927
IEO	ISHARES US OIL GAS EXL PROD ETF	891	928	893	943	936
LMBS	FRST TRT LOW DRTN OPPRNTS ETF	891	889	917	907	864
MDIV	FT MULTI ASSET DIVERSIF INC IDX ETF	893	934	885	900	846
SHV	ISHARES SHORT TREASURY BOND ETF	893	876	905	900	900
RINF	PROSHARES INFLATION EXPECTATIONS ETF	895	922	930	931	940
CSJ	ISHARES 1-3 YEAR CREDIT BOND ETF	896	877	911	903	898
IBDB	ISHARES IBONDS MAR 2018 TRM ETF	896	905	906	883	907
BSJH	GUGGENHEIM BULLESHARES 2017 ETF	898	874	902	887	912
GEUR	ADVISORSHARES GARTMAN GOLD EURO ETF	899	872	899	893	890
SRLN	SPDR BLACKSTONE GSO SENIOR LOAN ETF	899	902	878	835	877
IBMG	ISHARS IBND SEP 2018 TRM MUN BND ETF	901	860	875	861	883
IBMF	ISHRS IBND SEP 2017 TRM MN BND ETF	902	879	906	902	902
IBDJ	ISHARES IBONDS DEC 2017 TERM ETF	903	892	910	896	768
SCHO	SCHWAB SHORT TERM US TREASURY ETF	904	889	896	869	899
SHYG	ISHARES HIGH YIELD CORPORAT BOND ETF	905	916	837	832	879
TUZ	PIMCO 1-3 YEAR US TREASURY ETF	906	874	898	844	891
VGSH	VANGUARD SHORT TERM GOVERNMENT ETF	906	882	897	862	887
RJA	AB SVNK ELEMENTS LKD RGR INDX AGR	908	940	943	938	917
BSCI	GUGGENHEIM BULTSH 2018 CORP BOND ETF	909	892	900	862	887
IUSB	ISHARES TOTAL USD BOND MARKET ETF	909	882	915	906	914
AGQ	PROSHARES ULTRA SILVER ETF	911	832	744	872	871
FXN	FIRST TRUST ENERGY ALPHADEX ETF	912	944	938	955	953
IEI	ISHARES 3-7 YEAR TRERY BOND ETF	913	887	920	912	918
SJNK	SPDR BLMBRG BRCLY SHT TRM HGH ETF	914	917	833	837	867
GUSH	DRXN DLY S&P OL GS EXP PRD BL 3X ETF	915	898	913	911	909
GYLD	ARROW DOW JONES GLOBAL YIELD ETF	916	881	888	890	907

## The Lyons Share

SHY	ISHARES 1-3 YEAR TREASURY BOND ETF	917	909	926	915	918
SLVO	CREDIT SUISSE X LNK SLVR CVR CAL ETN	918	914	883	907	928
STIP	ISHARES 0-5 YEAR TIPS BOND ETF	918	887	914	899	915
JJG	BARCLAYS BK IPATH BLOOM GRAINS ETN	920	946	939	936	938
XME	SPDR S&P METALS & MINING ETF	920	849	857	904	759
BSJI	GUGGENHEIM BULLETSHARES 2018 ETF	922	894	858	845	903
ERX	DIREXION DAILY ENERGY BULL 3X ETF	923	971	965	962	957
SEA	GUGGENHEIM SHIPPING ETF	924	866	814	857	822
WDTI	WISDOMTREE MANAGED FUTURES STRAT ETF	924	896	875	920	940
VDE	VANGUARD ENERGY ETF	926	956	963	959	956
IYE	ISHARES US ENERGY ETF	927	951	956	954	949
STPZ	PIMCO 1-5 YEAR US TIPS INDEX ETF	928	900	915	914	926
XLE	ENERGY SELECT SECTOR SPDR ETF	929	942	954	951	949
WEAT	TEUCRIUM WHEAT ETF	930	938	923	896	905
ENY	GUGGENHEIM CANADIAN ENGY INCOME ETF	931	904	917	932	886
FTSD	FRANKLIN LBRTY SHRT DUR US GVRN ETF	931	912	922	888	922
IEF	ISHARES 7-10 YEAR TRSURY BOND ETF	933	915	927	923	930
UNG	UNITED STATES NATURAL GAS ETF	934	935	968	967	952
IGE	ISHARES NORTH AMER NATL RES ETF	935	945	942	953	939
TDDT	FLEXSHARES IBOX3 3 YR TIPS IDX ETF	936	901	925	922	923
SPFF	GLOBAL X SUPERINCOME PREFERRED ETF	937	941	902	874	913
DIG	PROSHARES ULTRA OIL & GAS ETF	938	963	964	966	958
USDU	WISDOMTREE BLOMBRG US DOL BUL ETF	939	898	894	926	933
PGHY	POWERSHS GLOB SHORT TERM HY BOND ETF	940	924	930	928	935
FENY	FIDELITY MSCI ENERGY INDX ETF	941	947	960	960	961
STPP	BARCLAYS BK IPATH US TREAS STEEP ETN	941	894	872	937	852
GDXX	PROSHARES ULTRA GOLD MINERS ETF	943	870	887	829	788
USLV	CS VELOCITYSHARES 3X LONG SILVER ETN	944	853	694	918	929
MBB	ISHARES MBS ETF	945	931	941	939	944
BZQ	PROSHARES ULTRSHRT MSCI BRZL CPD ETF	946	884	953	955	967
TTT	PROSHARES ULTPRO SH 20 YR TSRY ETF	947	921	966	940	936
SGDJ	SPROTT JUNIOR GOLD MINERS ETF	948	820	861	828	814
ZMLP	DIREXION ZACKS MLP HGH INCM SHS ETF	948	968	952	976	960
ARCC	ARES CAPITAL ORD	950	813	917	905	932
XOP	SPDR S&P OIL & GAS EXPL & PROD ETF	950	950	945	964	965
URA	GLOBAL X URANIUM ETF	952	973	985	979	943
RYE	GUGGENHEIM S&P 500 EQUAL WEI ENG ETF	953	965	968	970	970
JO	BARCLAYS BK IPATH BLOOM COFFEE ETN	954	985	987	967	990
SLVP	ISHARES MSCI GLOBAL SILR MIN ETF	954	931	933	885	891
VOX	VANGUARD TELECOMMUNICATION SERVC ETF	956	984	936	964	980
UUP	POWERSHS DB US DLR INDX BULLISH ETF	957	948	943	944	966
MLPX	GLOBAL X MLP ENERGY INFRASTRUCT ETF	958	959	951	961	963
SIL	GLOBAL X SILVER MINERS ETF	958	933	934	886	901
DVHL	UBS ETRACS PAY 2XLV DIV HIGH INC ETN	960	956	932	949	947
BIZD	VANECK VECTORS BDC INCOME ETF	961	960	947	933	951
BOIL	PROSHARES ULTRA BLOM NAT GAS ETF	961	954	984	982	972
MLPC	CITI C TRACKS MILLER HOWARD MLP ETN	963	963	960	946	944
GASL	DIR DAILY NAT GAS REL BUL 3X ETF	964	953	946	970	958
TICC	TICC CAPITAL ORD	964	923	976	658	867
GDXJ	VANECK VECTOR JUNR GOLD MNRS ETF	966	951	947	879	877
DBV	POWERSHARES DB G10 CURR HARVEST ETF	967	973	957	950	969
BDCS	UBS E TRACS LKD WLS FRG DEV ETN	968	969	950	942	954
NUGT	DRXN DLY GLD MNS INX BL 3X ETF	969	927	949	907	916
IYZ	ISHARES US TELECOM ETF	970	992	958	981	987
PXI	PWRSHRS DWA ENERGY MNTM ETF	971	976	967	991	985
FRAK	VANECK VCTR UNCNVNTNL OIL GAS ETF	972	975	954	974	973
UGAZ	VELOCITYSHARES 3X LNG NTRL GS ETN	973	966	992	992	979
IMLP	BARCLAYS IPATH SP MLP ETN	974	961	962	972	946
ATMP	BARCLAYS SELECT MLP ETN	975	972	973	973	961
FXP	PROSHARES ULTRASH FTSE CHINA 50 ETF	976	966	990	985	978
DAG	DB AGRICULTURE DOUBLE LONG ETN	977	958	981	969	974
SMHD	UBS ETRCS MNLY PY 2XLVGD US SML ETN	978	999	988	977	992

## The Lyons Share

PXJ	POWERSHARES DYNM OIL SRVCS PRTFL ETF	979	991	994	992	995
AMLP	ALPS ALERIAN MLP ETF	980	979	980	985	981
AMJ	JP MORGAN CHASE ALERIAN ETN	981	980	976	980	964
AMU	UBS ETRACS ALERIAN MLP INDEX ETN	982	978	979	975	968
GAZ	BARCLYS BK IPATH BLOOM NATL GAS ETN	982	986	988	989	997
SILJ	ETF MANG PUREFUNDS ISE JUNIR SIL ETF	984	961	972	946	955
OHAI	OHA INVESTMENT ORD	985	955	958	963	975
YANG	DIREXION DLY FTSE CHNA BER 3X ETF	986	977	995	995	985
YMLI	VANCK VCTR HG INCM INFRST MLP ETF	987	970	970	978	976
BDCL	UBS LEV LNG SEC LKD WF BUS DEV ETN	988	988	975	955	977
MLPA	GLOBAL X MLP ETF	988	981	978	987	984
XES	SPDR S&P OIL & GAS EQUIP & SERVS ETF	990	995	997	997	998
MLPI	UBS E TRACS ALERIAN MLP INFRASTR ETN	991	987	983	994	982
OIH	VANECK VECTORS OIL SERVICES ETF	992	996	995	999	999
TECS	DIREXION DAILY TECHNOLOGY BER 3X ETF	993	983	998	982	989
ASFI	ASTA FUNDING ORD	994	1000	991	988	983
PSCE	POWERSHARES S&P SMALLCA ENG PORT ETF	995	989	986	996	994
AMZA	INFRACAP MLP ETF	996	982	982	990	988
IEZ	ISHARES US OIL EQUIP SER ETF	996	997	999	1000	996
SGG	BARCLAYS BK IPATH BLOOM SUGAR RT ETN	998	998	1000	998	1000
QAT	ISHARES MSCI QATAR CAPPED ETF	999	993	974	982	993
JNUG	DIREXION DILY JR GOLD MIN BUL 3X ETF	1000	989	992	958	971

### Disclaimer

#### Important Consumer Disclosure

The Lyons Share's web site is limited to the dissemination of general investment-related information together with possible access to additional publications and links. Accordingly, the publication of The Lyons Share's web site on the Internet should not be construed by any prospective or existing subscriber as a solicitation to effect, or attempt to effect transactions in securities, or the rendering of personalized investment advice for compensation over the Internet.

Subscribers are solely responsible for choosing investments for their accounts based on their own risk tolerance and general circumstances. The Lyons Share does not make any representations or warranties as to the accuracy, timeliness, suitability, completeness, or relevance of any information prepared by any unaffiliated third party, whether linked to The Lyons Share's web site or incorporated herein, and takes no responsibility therefor. All such information is provided solely for convenience purposes only and all users thereof should be guided accordingly.

Past performance may not be indicative of future results. Therefore, no prospective or existing subscriber should assume that future performance of any specific investment or investment strategy, including the investments and/or investment strategies made reference to directly or indirectly by The Lyons Share on its web site, or indirectly via a link to an unaffiliated third party web site, will be profitable or equal any historical performance level(s).

Please remember that different types of investments involve varying degrees of risk, and there can be no assurance that any specific investment will be suitable for a prospective or existing subscriber's investment portfolio.

Historical performance results for investment indices and/or categories generally do not reflect the deduction of transaction and/or custodial charges, the deduction of an investment management fee, nor the impact of taxes, the incurrence of which would have the effect of decreasing historical performance results.

Certain portions of The Lyons Share's web site (i.e. videos, posts, commentaries, etc.) may contain a discussion of, and/or provide access to, positions and/or recommendations as of a specific prior date. Due to various factors, including changing market conditions, such discussion may no longer be reflective of current position(s) and/or recommendation(s). Moreover, no prospective or existing subscriber should assume that any such discussion serves as the receipt of, or a substitute for, personalized advice from an investment professional.

The Lyons Share is neither an attorney nor an accountant, and no portion of the web site content should be interpreted as legal, accounting or tax advice.

The Lyons Share does not make any representations or warranties as to the accuracy, timeliness, suitability, completeness or relevance of any information prepared by any unaffiliated third party, whether linked to The Lyons Share's web site or incorporated herein, and takes no responsibility therefore. All such information is provided solely for convenience purposes only and all users thereof should be guided accordingly.

Each prospective or existing subscriber agrees, as a condition precedent to his/her/its access to The Lyons Share's web site, to release and hold harmless The Lyons Share, its officers, directors, owners, employees and agents from any and all adverse consequences resulting from any of his/her/its actions and/or omissions which are independent of his/her/its receipt of access to The Lyons Share.