



## **Weekly Macro Market Report**

**February 4, 2018**

## U.S. Broad Equity Market Outlook

### Intermediate-Term: Bullish

*(Will always be Bullish or Bearish)*

Despite the long-awaited pullback from the relentless rally, our intermediate-term Risk Model (RM) remains Positive and we continue to hold – and are looking to add -- significant long exposure. Internal/breadth indicators are holding in positive territory, especially among large-caps. Price structure, thus far, remains constructive across most market segments, i.e., higher highs & lows, despite the pullback. In the near-term, prices are approaching support levels and fear is hitting short-term extreme levels. Therefore, this pullback should be a buying opportunity and, overall, we continue to follow our game plan to take some profits off the table in extended areas (last few weeks) – and redeploy the capital into other favorable areas as they pull back to favorable risk:reward junctures (like now/early this week). In the long-term, given the extended status of some of the Risk Model components as well as longer-term sentiment and background measures that are at excessively bullish levels, we envision a top of significant magnitude following this intermediate-term rally.

- Favored areas of the domestic market are now large-cap growth, technology, consumer discretionary, consumer staples, health care, materials, industrials, housing, financials and transports. Meanwhile, utilities and high yield bonds are in the “sell into strength” category.
- Internationally, most markets are in gear with the U.S., finally pulling back from various levels of extended conditions. Emerging markets may offer best prospects for long-term allocation of capital. Brazil and Russia have substantial potential upside in the long-term. India is bullish as well, but well into its intermediate-term advance. China’s Shanghai Composite hit potential targets noted 6 months ago and is significantly more challenged now. Smaller EM countries, e.g., Taiwan, Thailand, The Philippines, Indonesia, South Africa, Chile, etc. may be undergoing major breakouts and offer the best long-term potential in global equities, though they may need to consolidate recent moves in the near-term. European stocks may have potential for a “catch-up” rally in near to intermediate-term but are in serious tests of support at the moment, especially in core markets, e.g., STOXX 600, Germany, France as well as the UK FTSE-100 which is testing its recent breakout level. Switzerland and Finland look particularly attractive for potential intermediate-term upside. The PIIGS meanwhile have improved their technical standing, bettering the prospects of continuing the risk-on environment. Australia and Canada are testing levels of potential intermediate-term breakouts as well. Japan is still attractive in the intermediate to longer-term, and testing near-term support now.
- In other markets, the 10-year Treasury Yield is following through on its breakout to multi-year highs, though is hitting potential near-term resistance, while the 30-Year Yield has finally joined the TNX to the upside, breaking its key post-2011 Down trendline. Broad commodity indices, along with crude oil, are consolidating recent highs and may have moderate further upside. Industrial metals, e.g., copper, are consolidating following recent bounce; look for further moderate strength there. Precious metals, e.g., gold, silver, meanwhile, are testing levels of recent breakouts of long-term Down trendlines, with gold successful so far while silver is possibly failing. The Dollar Index is now testing the top of its broken post-1985 Down trendline which is slowing the pace of its decline now. The Euro is hitting multi-year highs and has further upside potential. Lastly, Bitcoin is pulling back near a potential favorable entry point, longer-term.

**Bottom Line:** Despite the market pullback, our Risk Model is still positive and price action has not yet done anything to undermine the intermediate-term uptrend. Given that, any serious, longer-term stock market danger should be on hold. Therefore, intermediate-term upside is still expected meaning this pullback should be a buying opportunity. Our gameplan, thus, remains the same, i.e., hold significant long equity exposure, reducing some in extended areas, as we have over the past few weeks, and adding exposure on pullbacks to support in favored areas (e.g., large growth, technology, consumer discretionary, staples, health care, materials, industrials, housing, financials and transports), which should be now and early this week.



### Short-Term: Bullish

*(Will be Bullish, Bearish or [often] neutral – used more for trade entry/exit timing purposes)*

U.S. and global stocks are finally providing a long-awaited pullback. We have been holding off on buying, and have been taking profits, due to the extended price structure and frothy sentiment. Now (and likely early this week), we can redeploy those proceeds into favored areas pulling back to support, especially with sentiment now hitting short-term fear extremes. Domestically, favored areas near support at the moment include large-cap growth, semiconductors, technology, housing, transports, consumer staples, basic materials and industrials. Other areas hitting potential support include energy and airlines. No areas are presently at resistance.

International equity markets are also pulling back and we are on watch for buying opportunities there as well. Brazil, Russia and smaller EM's (e.g., Indonesia, South Korea, Taiwan, Thailand, The Philippines, South Africa, Chile) present perhaps the best longer-term potential for investors. However, most have further potential downside in the near-term. Some EM markets hitting potential near-term support include South Africa, South Korea and The Philippines. China's Shanghai Composite reached the target we were eyeing and upside may be more difficult there. European markets are pulling back and testing key support levels now. Specifically, the STOXX 600, Germany, France and the UK FTSE are testing important, "buyable" support. We especially like Switzerland and Finland and are looking for entry points ahead of potential breakouts and major upside. Australia and Canada are also testing their respective breakout levels and may be presenting good buying opportunities now.

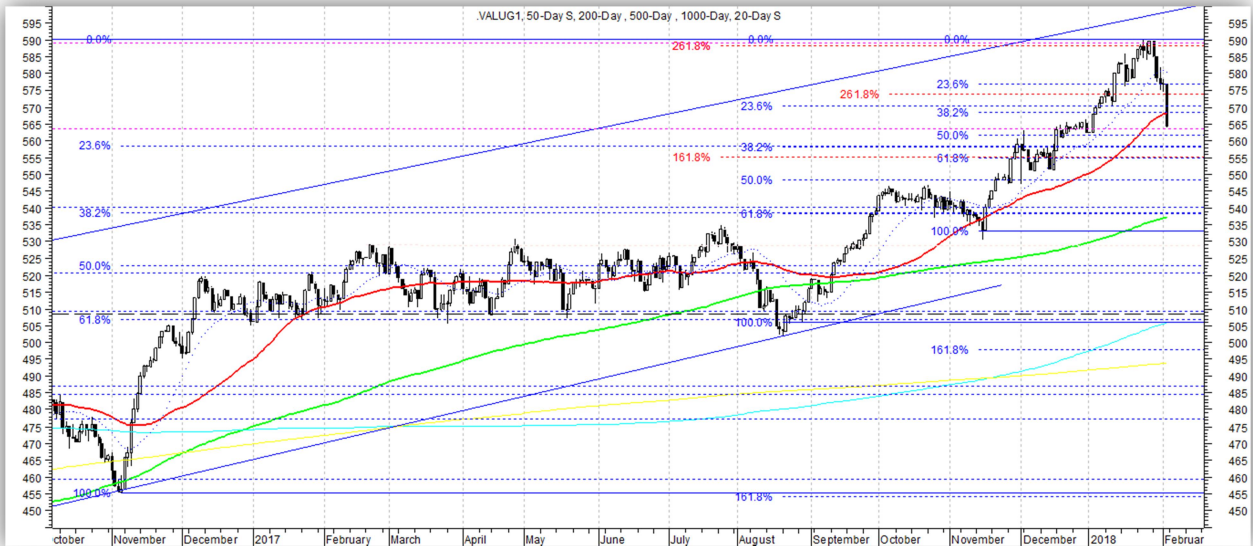
10-Year Yields have followed through to multi-year highs and are hitting near-term resistance now, while the 30-Year Yield is finally catching up to the upside and has more room to run higher in the near-term. The U.S. Dollar Index is testing key support now, while the Euro has broken to multi-year highs, opening further upside potential. Bitcoin is testing possible key support -- and a good risk/reward entry point -- now. Gold can be bought into current pullback following the break of its long-term Down trendline, though, silver appears to be failing its breakout test.

**Bottom Line:** The current equity pullback should be a buying opportunity. While there may be some further downside in the very near-term, i.e., Monday and possibly Tuesday, this week, prices in many areas of the market are testing or approaching good, "buyable" support levels and short-term sentiment is hitting fear extremes. Thus, especially with the profits that we have taken in recent weeks, we can now redeploy some capital in better risk/reward setups that we have been waiting patiently for.

# U.S. Equity Index Charts

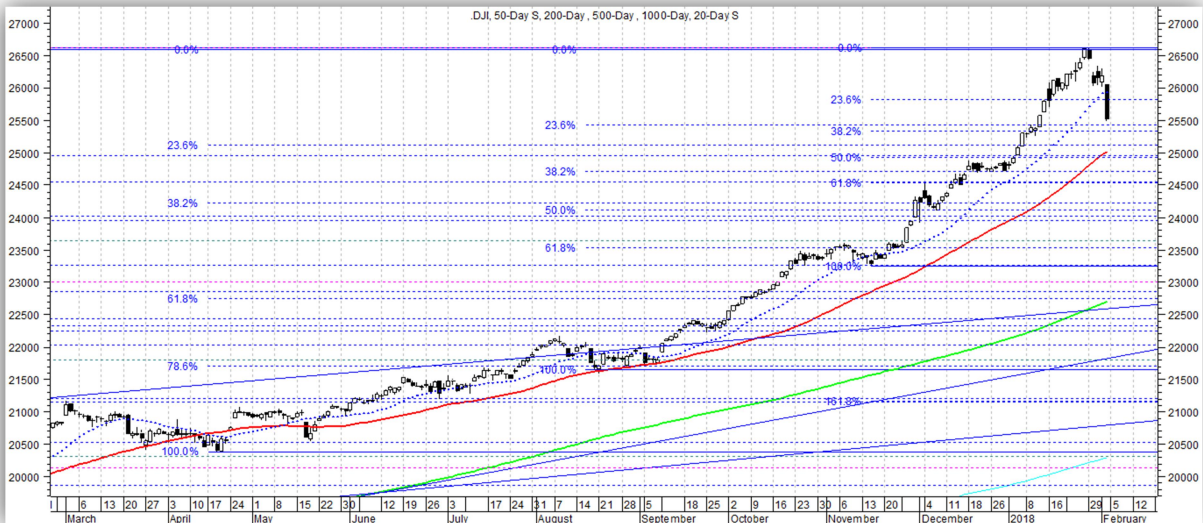
## Value Line Geometric Composite (tracks "median" stock)

Bullish. Pulling back from key Fib Extensions. Approaching good "buyable" support levels. Key support levels: 558, 556, 540, 522, 508, 495, 455. Key resistance levels: 577, 590.



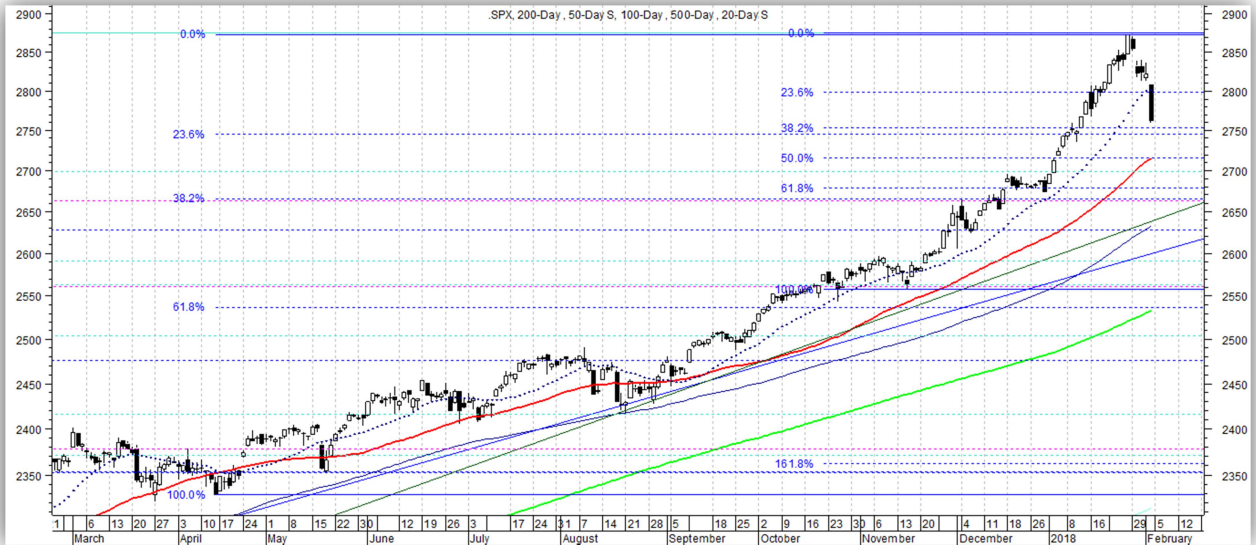
## Dow Jones Industrial Average

Bullish. Finally pulling back from highs, off of a key longer-term Fib Extension. Approaching good "buyable" support levels. Key support levels: 25,400, 24,950, 24,500, 24,000, 23,500, 23,000, 22,100, 21,600, 21,200, 20,400. Key resistance levels: 26,200, 26,600.



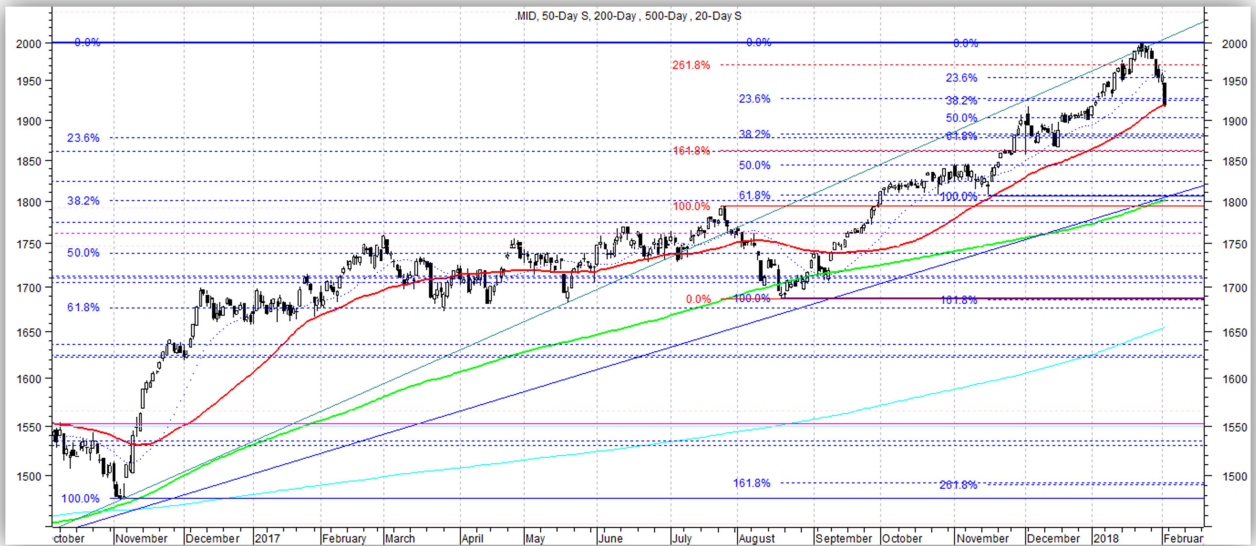
### S&P 500

Bullish. Finally pulling back from highs; approaching good “buyable” support levels. Key support levels: 2750, 2670, 2560, 2490, 2420, 2385, 2345. Key resistance levels: 2822, 2872.



### S&P 400 Mid-Cap

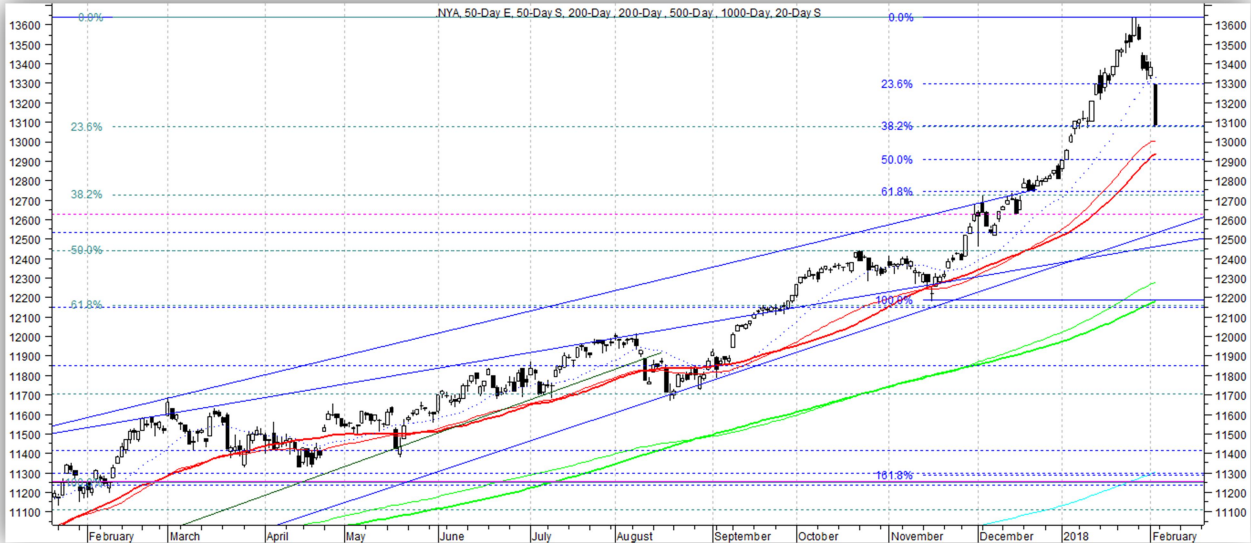
Bullish. Pulling back from highs; hitting good “buyable” support levels now. Key support levels: 1925, 1880, 1800, 1770, 1690, 1620. Key resistance levels: 2000.





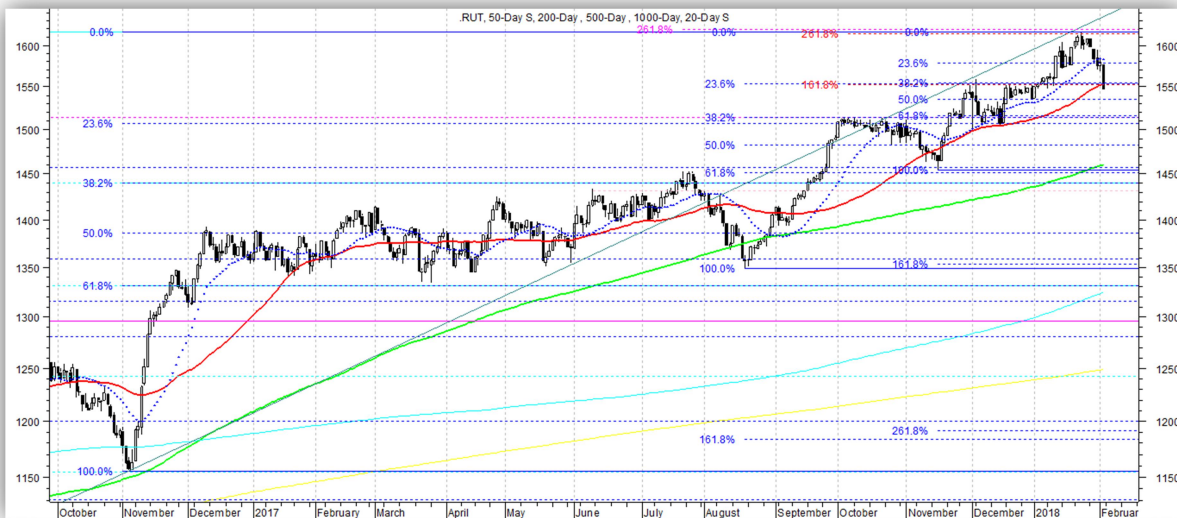
### NYSE Composite

Bullish. Finally pulling back from highs; hitting good “buyable” support levels now. Key support levels: 13,100, 12,900, 12,740, 12,200, 12,000, 11,700, 11,450, 11,250. Key resistance levels: 13,350, 13,640.



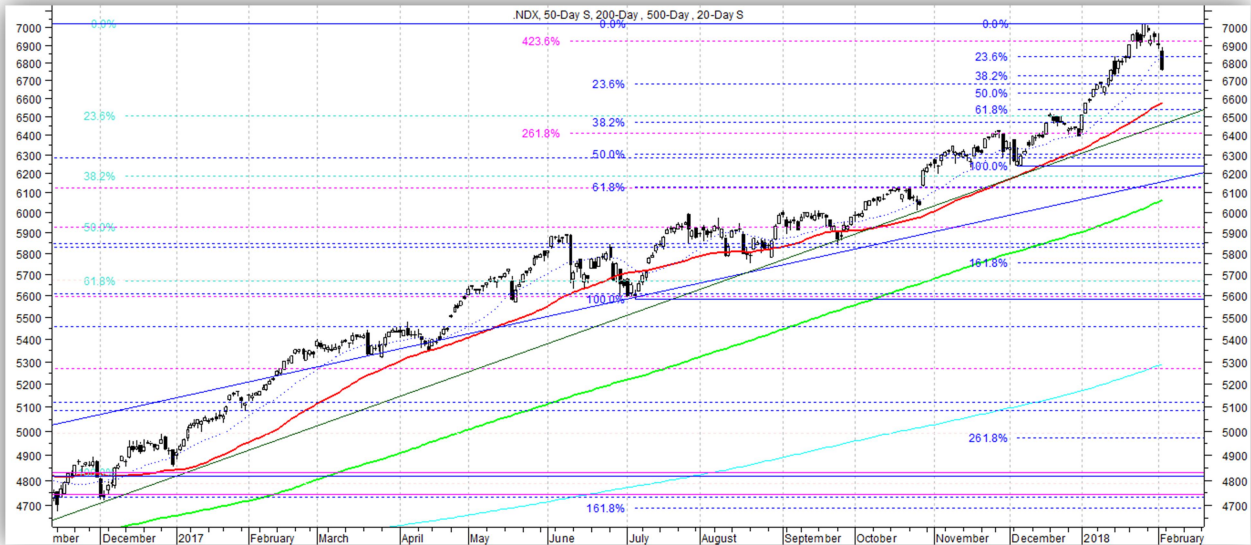
### Russell 2000

Bullish. Pulling back from highs; hitting good “buyable” support levels now. Key support levels: 1552, 1515, 1450, 1350, 1300. Key Resistance levels: 1615.



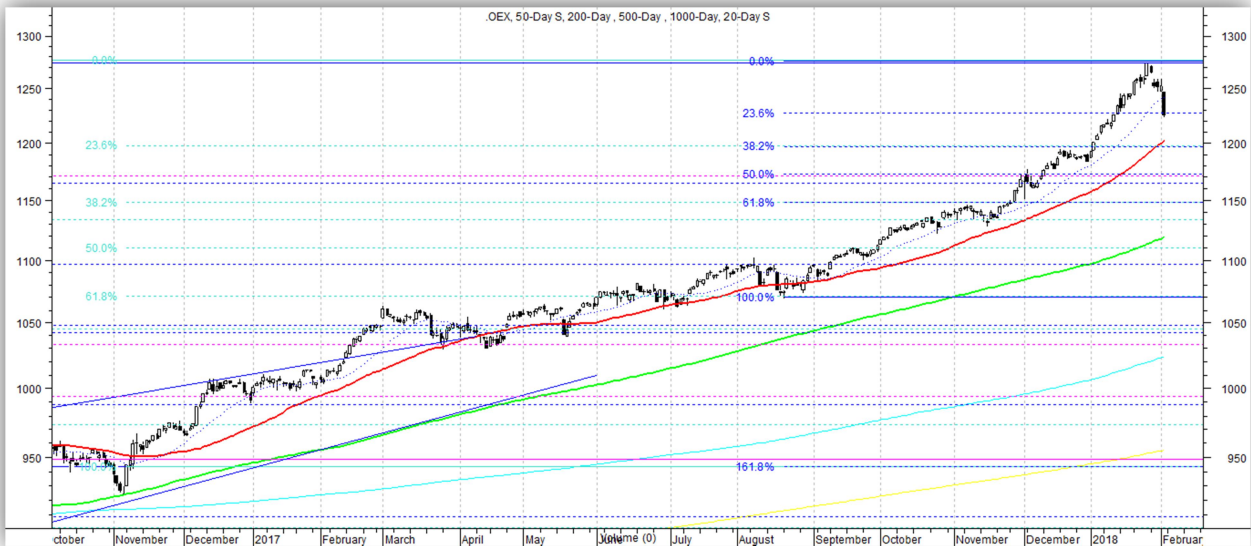
## Nasdaq 100

Bullish. Finally pulling back from highs; not quite at good “buyable” support levels yet. Key support levels: 6675, 6480, 6300, 6125, 5850, 5600, 5480, 5400, 5325. Key resistance levels: 7025.



## S&P 100

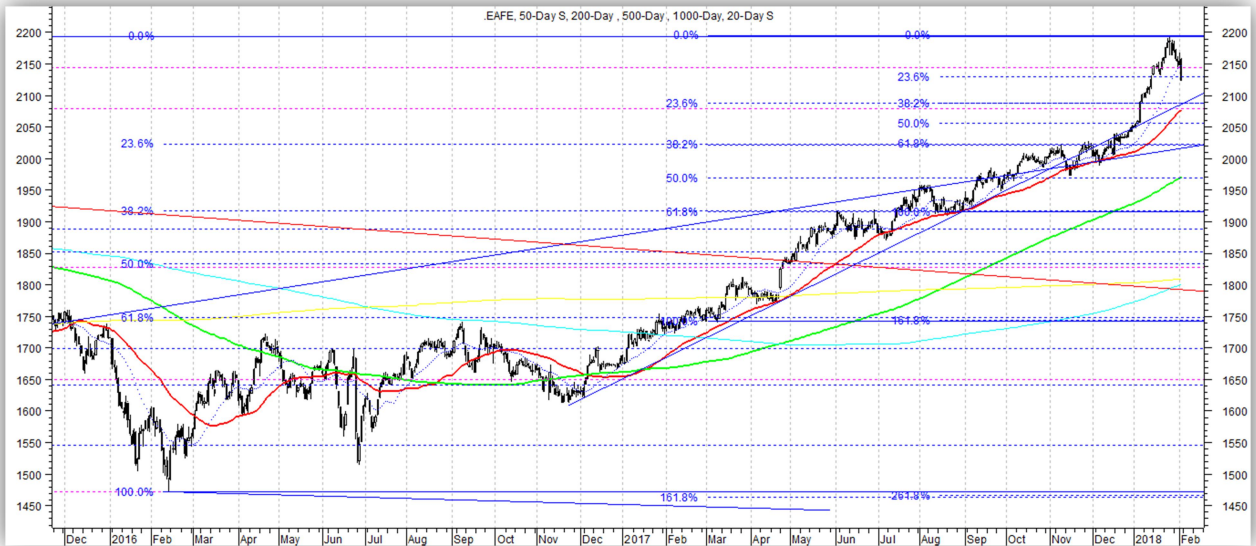
Bullish. Finally pulling back from highs; hitting initial support now, but better “buyable” support levels still lower. Key support levels: 1227, 1197, 1170, 1148, 1097, 1030, 1010, 995. Key resistance levels: 1275.



# International Indices

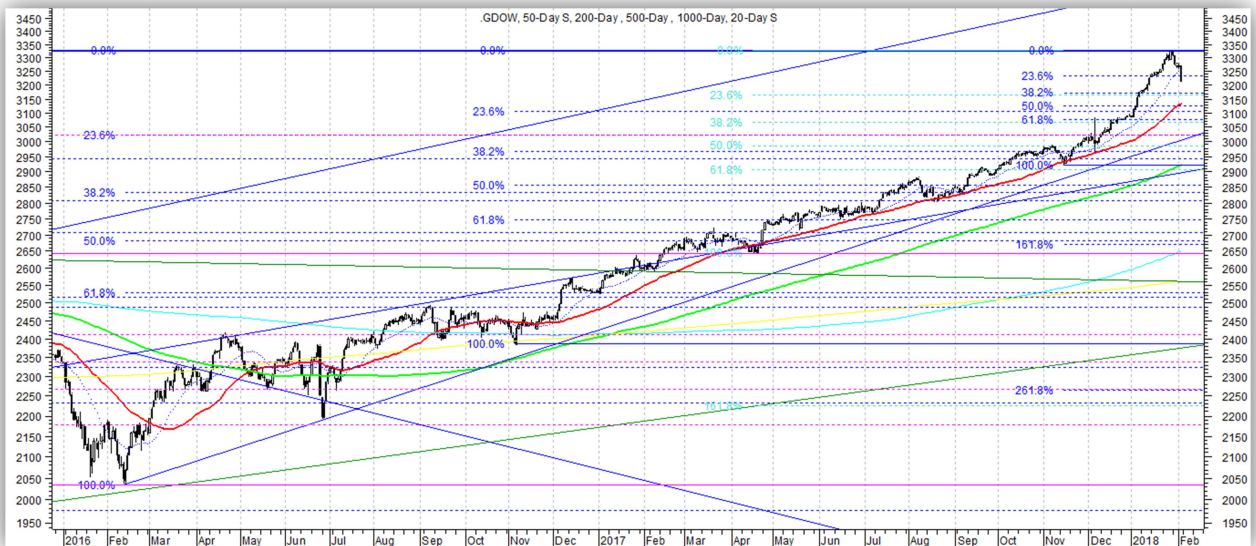
## MSCI EAFE

Bullish. Finally pulling back from highs; further room below before better “buyable” support hit. Key support levels: 2130, 2090, 2020, 1915, 1880, 1830, 1770, 1740. Key resistance levels: 2192.



## Global Dow

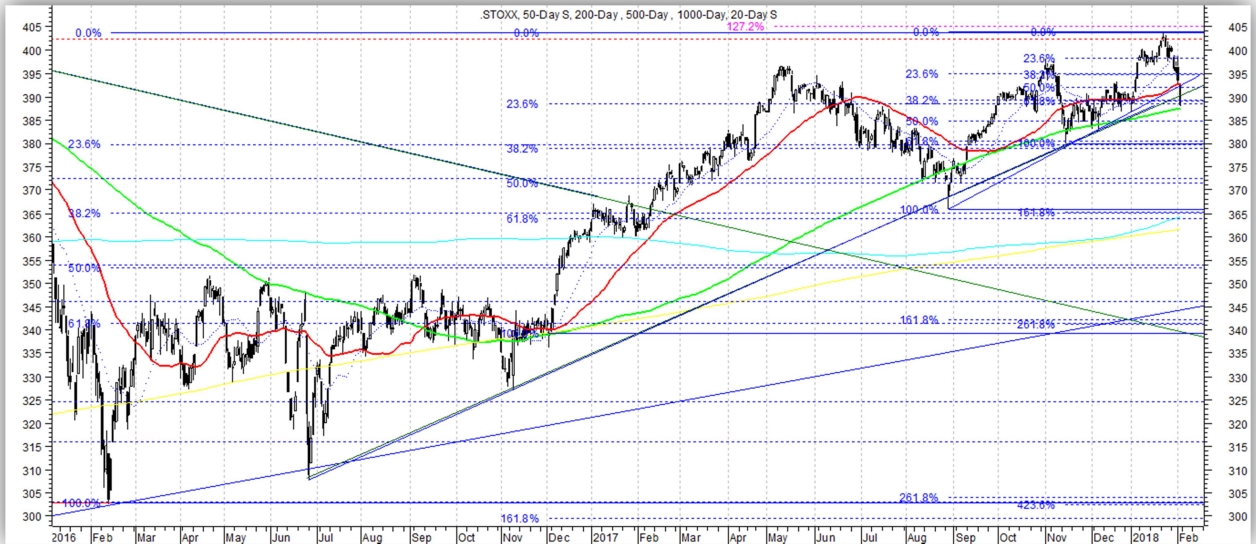
Bullish. Finally pulling back from highs; further room below before better “buyable” support hit. Key support levels: 3170, 3080, 3020, 2975, 2910, 2825, 2690. Key resistance levels: 3321.





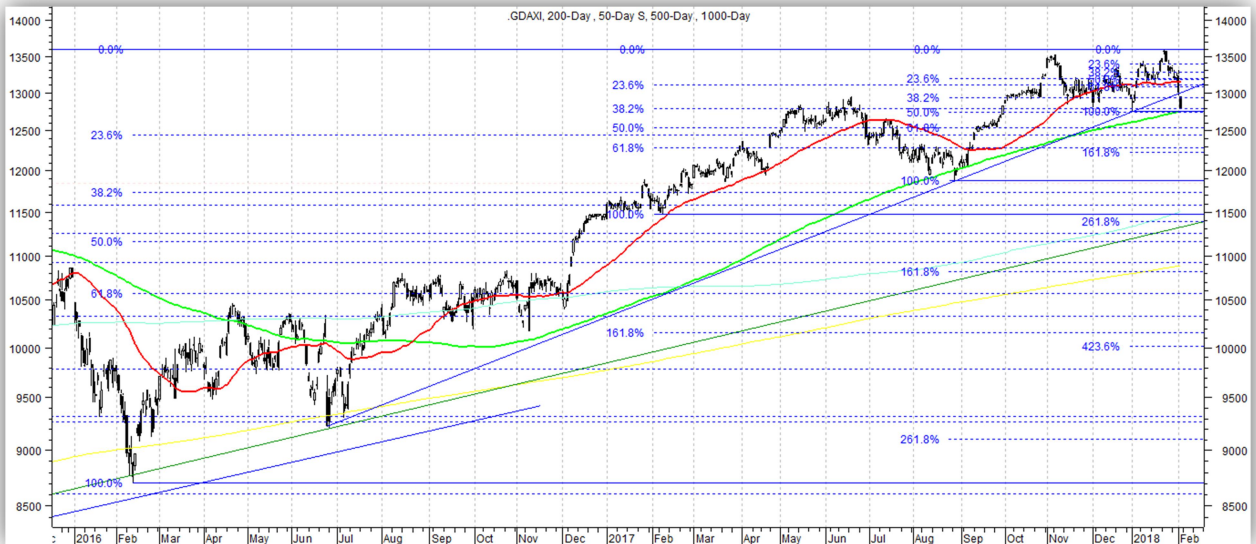
## STOXX Europe 600

Bullish. Pulling back from highs; hitting good “buyable” support levels now. Key support levels: 389, 380, 365, 374, 337. Key resistance levels: 398, 404, 415.



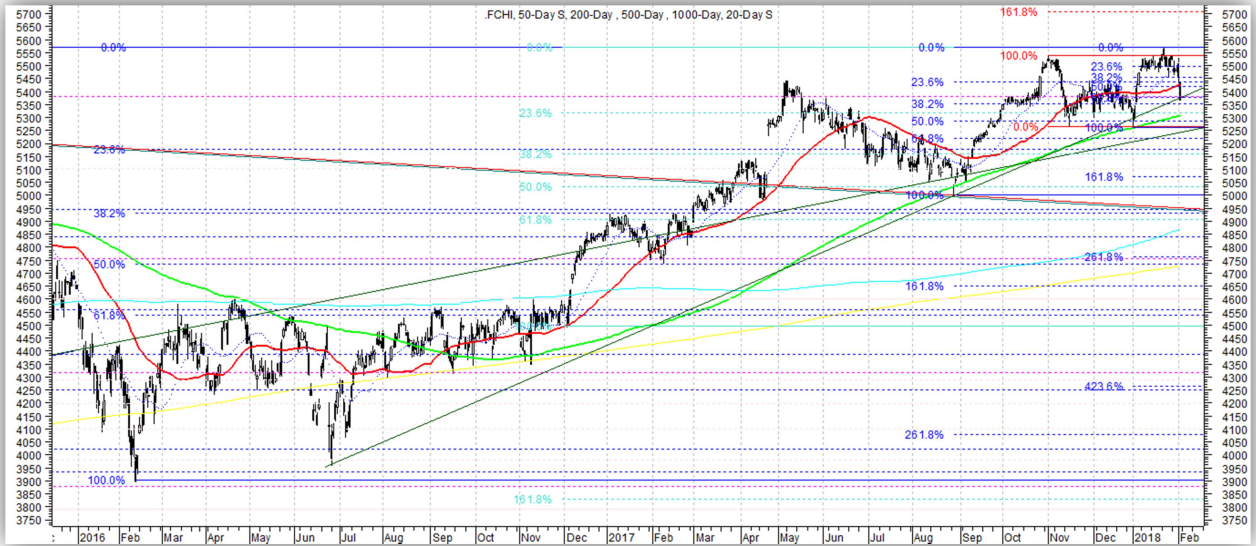
## German DAX

Bullish. Pulling back from highs; hitting good “buyable” support levels now, though, did break a key Up trendline and may need further time to repair. Key support levels: 12,750, 12,500, 12,200, 11,950, 11,600. Key resistance levels: 13,200, 13,600.



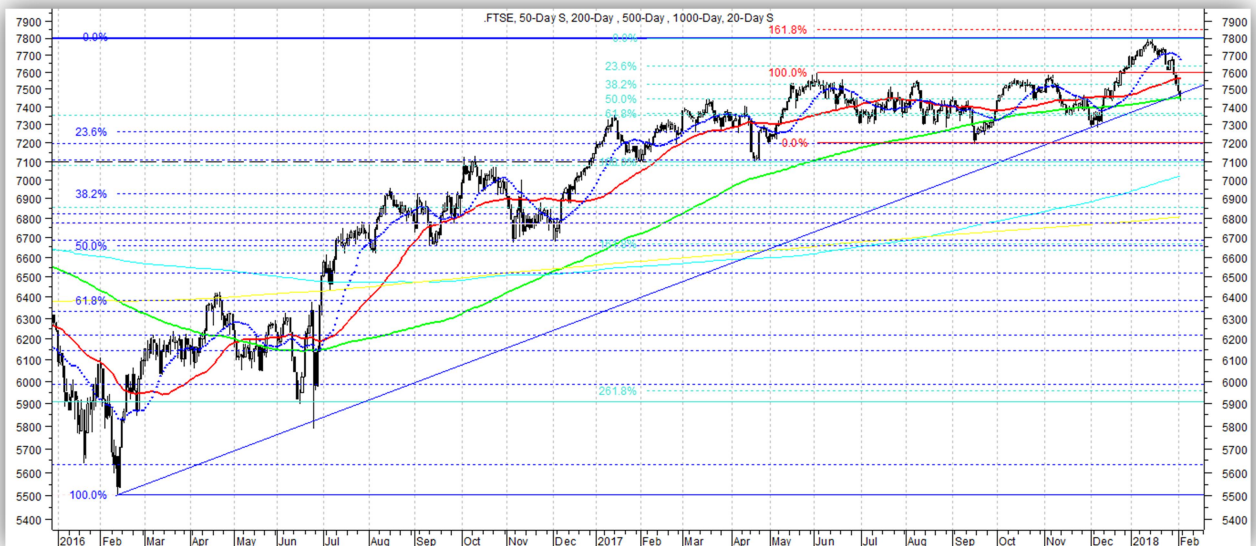
### France CAC-40

Bullish. Pulling back from highs; hitting good “buyable” support levels now. Key support levels: 5380, 5270, 5200, 5150, 5000, 4920. Key resistance levels: 5460, 5570.



### UK FTSE-100

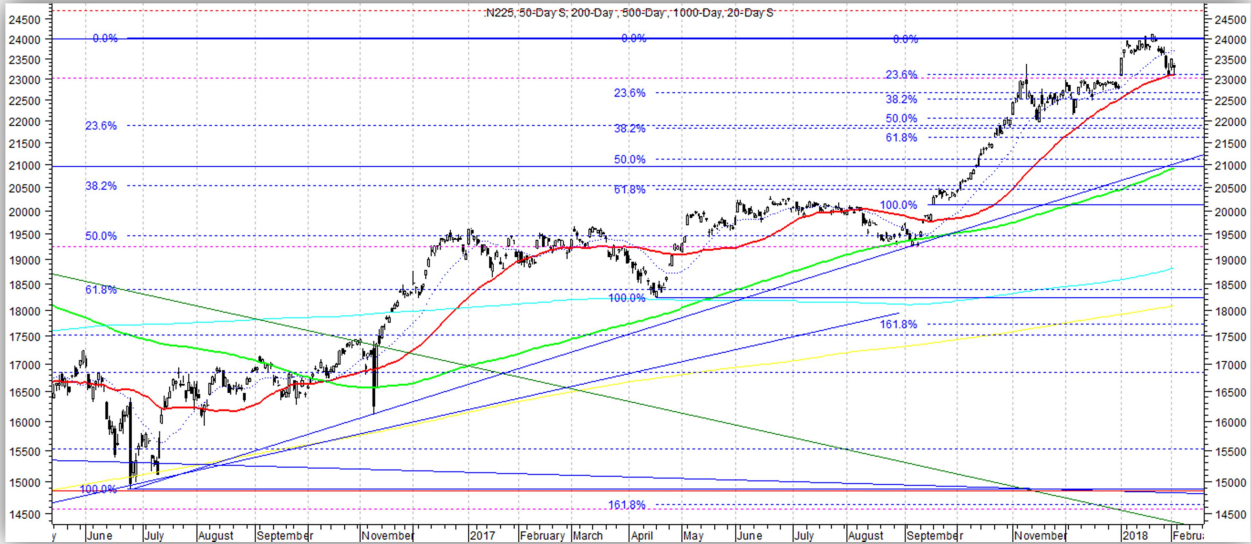
Bullish. Pulling back, testing near support/breakout level; buyable here. Key support levels: 7450, 7350, 7200, 7100, 6980-7000. Key resistance levels: 7650, 7800, 7850.





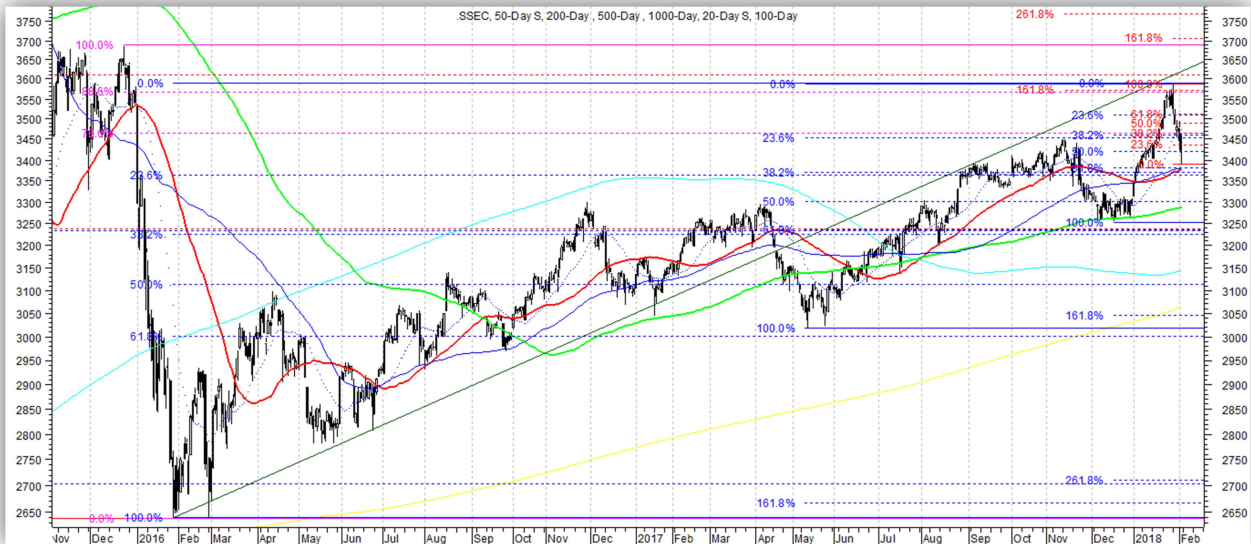
## Japan Nikkei 225

Bullish. Pulling back, testing near support/breakout level; buyable here. Key support levels: 23,000, 22,500, 21,800, 20,300, 19,200, 18,210. Key resistance levels: 24,000, 24,700, 27,000.



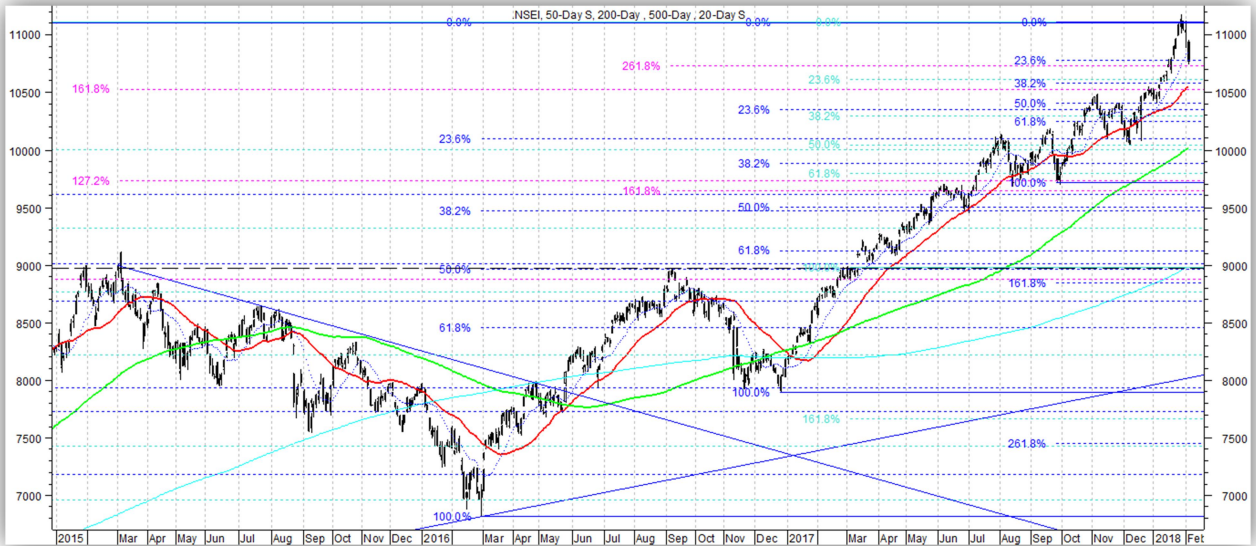
## China Shanghai Composite

Bullish. Pulling back from "target" resistance levels where we removed rest of our position. Testing support levels now, though, we are no longer interested in buying this. Key support levels: 3370, 3300, 3240, 3000, 2640. Key resistance levels: 3465, 3570, 3610, 3660.



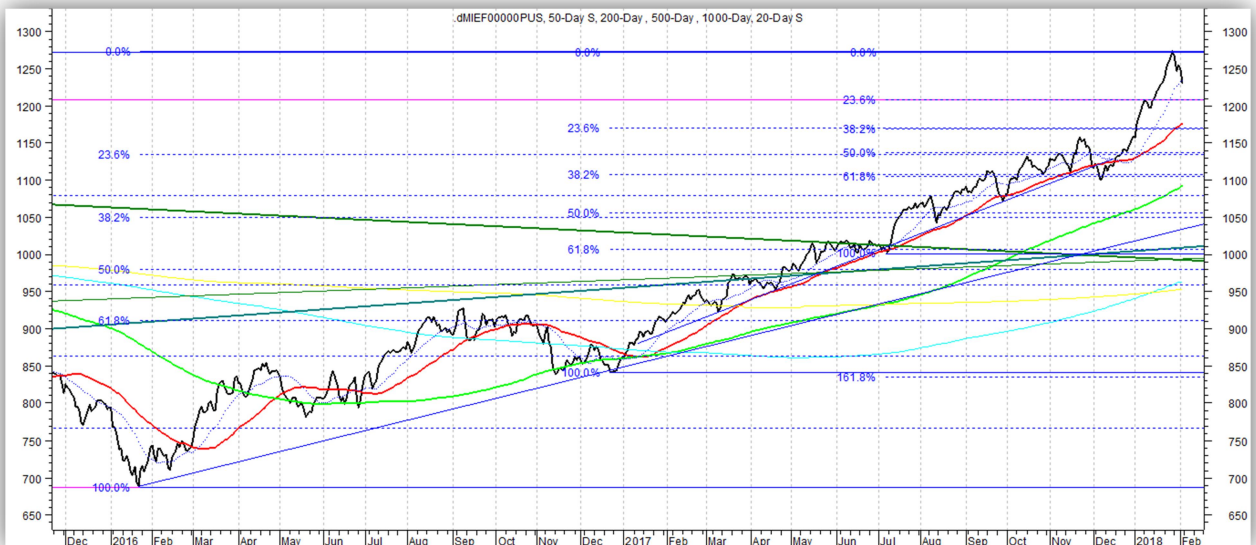
## India Nifty 50

Bullish. Finally pulling back from highs; hitting initial support now, but better “buyable” support levels still lower.  
 Key support levels: 10,800, 10,575, 10,250, 10,100, 9970, 9700, 9600, 9440, 9280, 8990, 8790. Key resistance levels: 11,100.



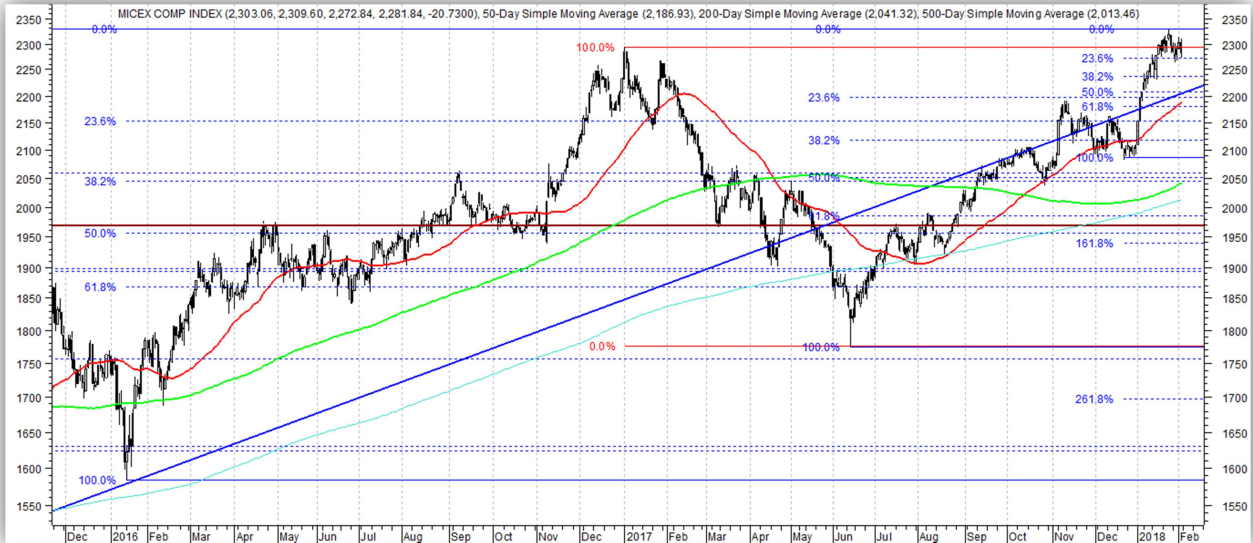
## MSCI Emerging Markets

Bullish. Finally pulling back from highs; hitting initial support now, but better “buyable” support levels still lower.  
 Key support levels: 1230, 1209, 1170, 1136, 1105, 1050, 950, 935. Key resistance levels: 1271, 1332, 1350.



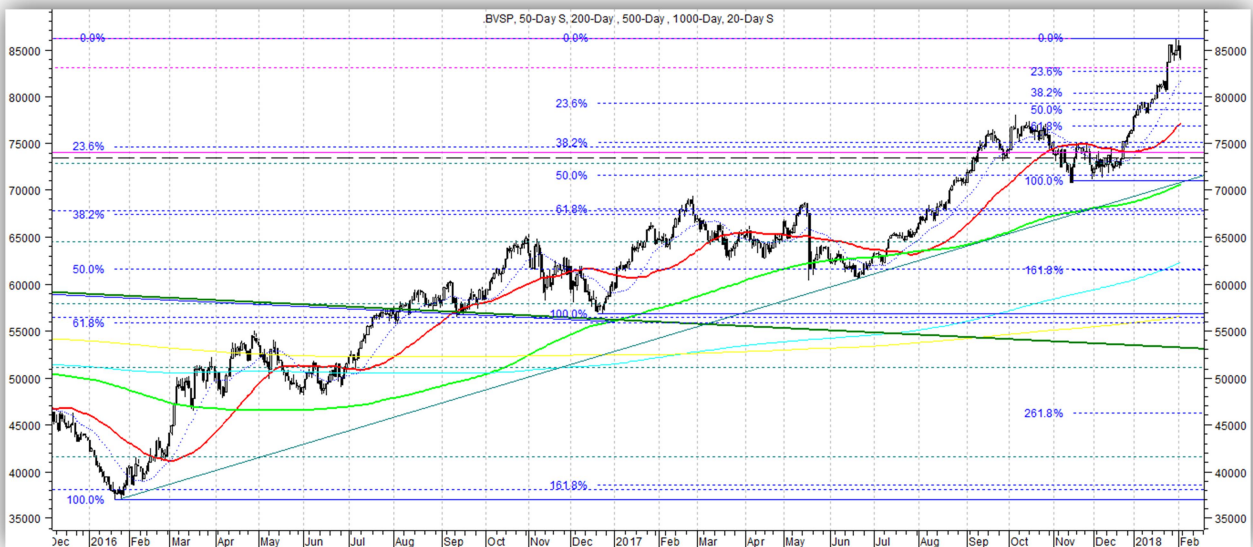
## Russia MICEX

Bullish. Consolidating near all-time highs now. Looking for eventual breakout and significant new up-leg, but has near-term risk given global equity pullback. Key support levels: 2240, 2180, 2200, 2100, 2050, 1970, 1940, 1900, 1870, 1775, 1741, 1610. Key resistance levels: 2330.



## Brazil Bovespa

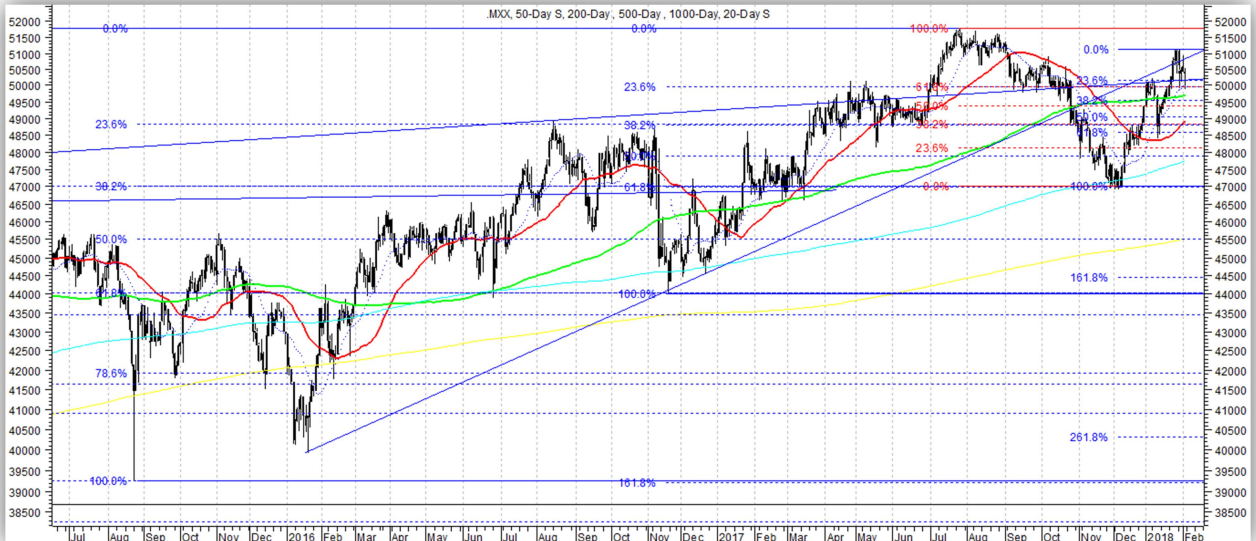
Bullish. Consolidating recent burst to new highs. Don't chase; near-term risk is elevated due to "catch-up" potential to global equity selloff. Key support levels: 82,600, 79,000, 75,000, 68,000, 60,150, 56,000. Key resistance levels: 86,000.





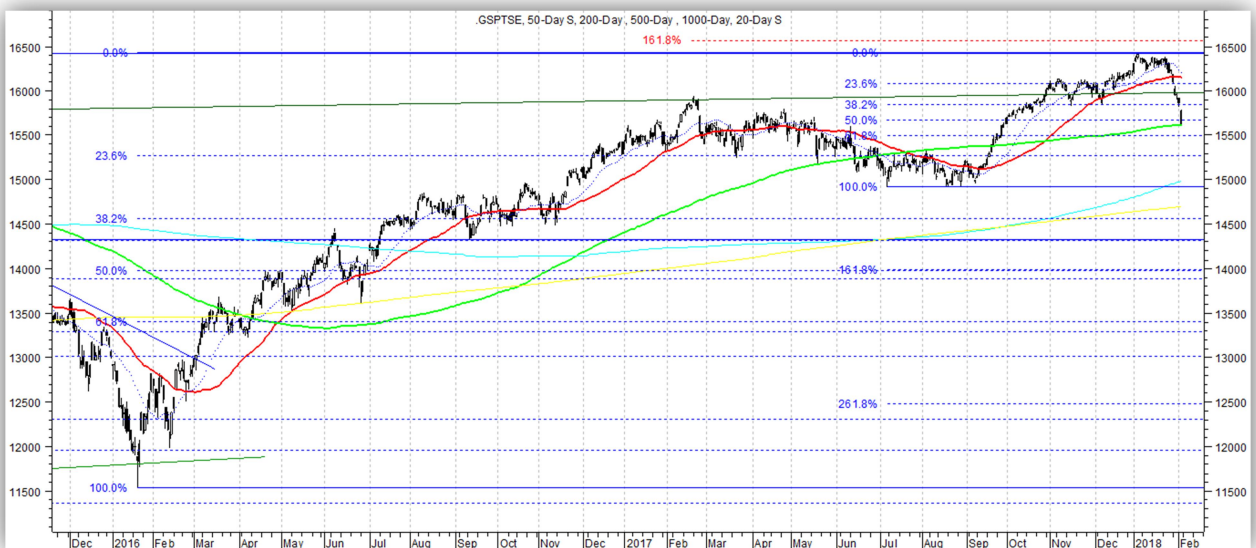
### Mexico IPC

Bullish. Broke key resistance ~50,000; now testing the area as it should be support. Key support levels: 50,000, 49,500, 48,500, 47,000, 44,000, 43,500. Key resistance levels: 51,100, 51,700.



### Canada TSX

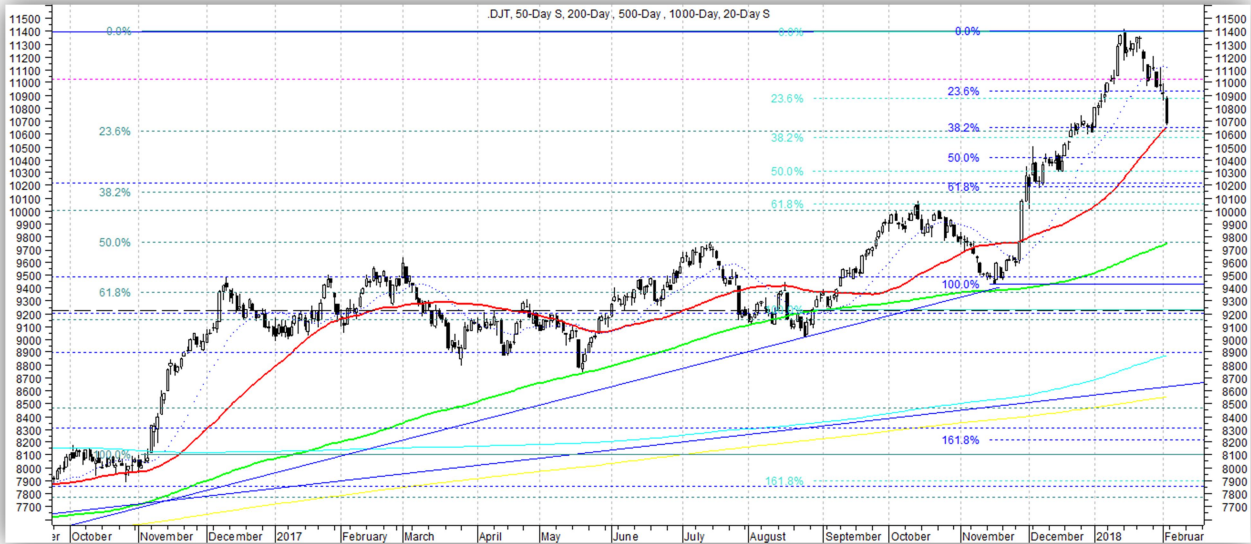
Bullish. Pulling back after breakout to all-time highs. Benefit of the doubt is still to the upside, but a “false breakout” is a possibility after failing to hold breakout area. Key support levels: 15,500, 15,290, 14,900, 14,550, 14,300, 14,000. Key resistance levels: 16,100, 16,400, 16,570.



## U.S. Sector & Sector/Industry ETF Charts

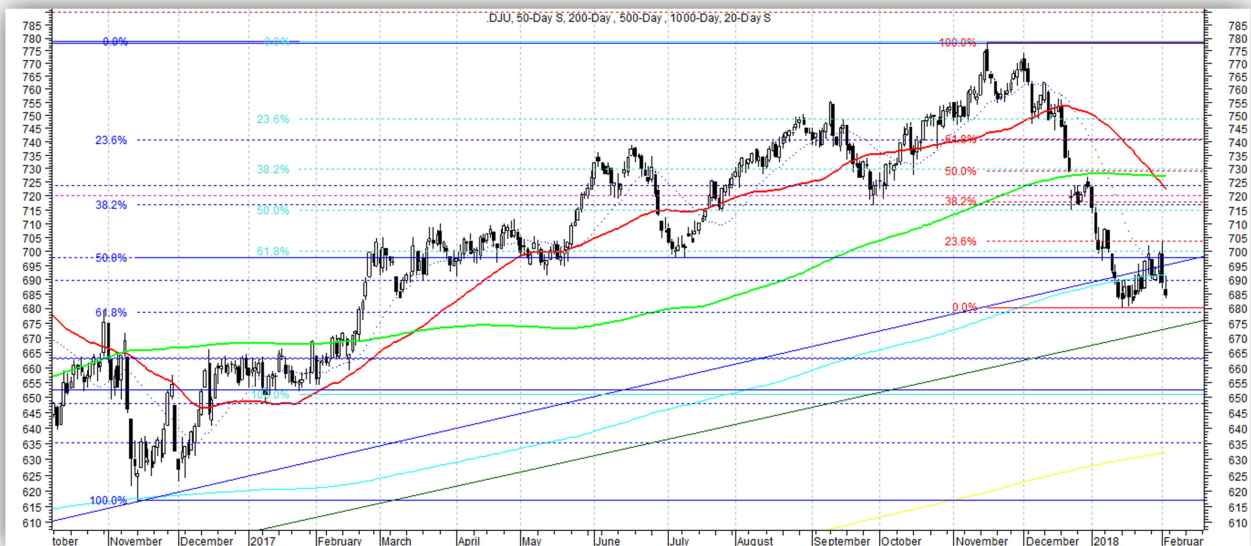
### Dow Jones Transportation Average

Bullish. Pulling back from highs; hitting good “buyable” support levels now. Key support levels: 10,660, 10,400, 10,200, 9850, 9400, 9230, 9000, 8930, 8750, 8400, 8000. Key resistance levels: 11,100, 11,400.



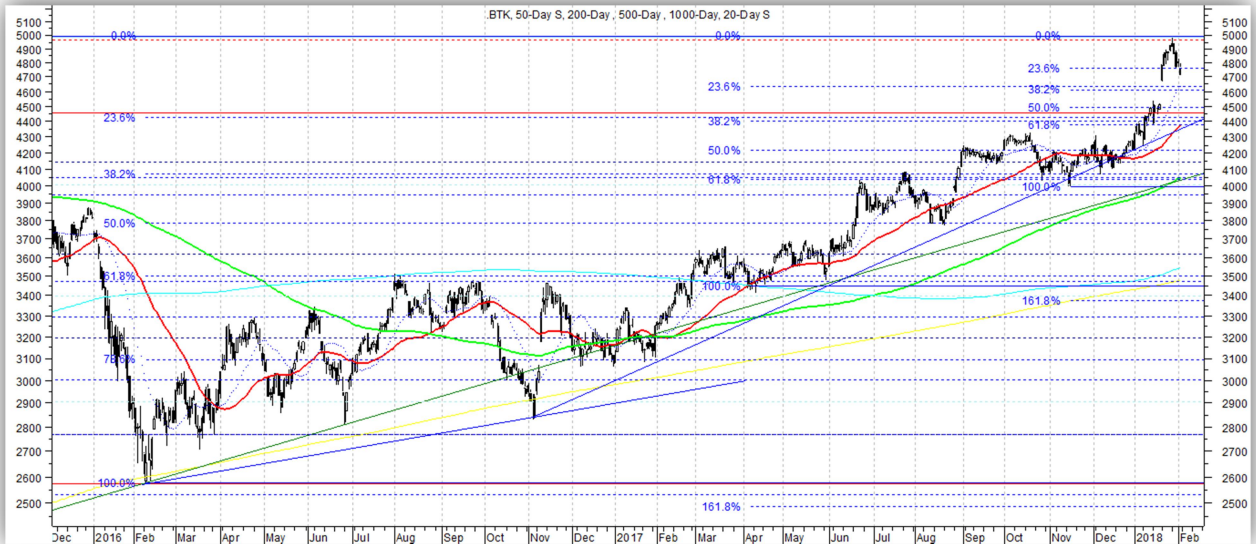
### Dow Jones Utility Average

Bearish. Bouncing off long-term uptrend. Selling rallies. Key support levels: 679, 663, 652, 617. Key resistance levels: 704, 719, 740, 779.



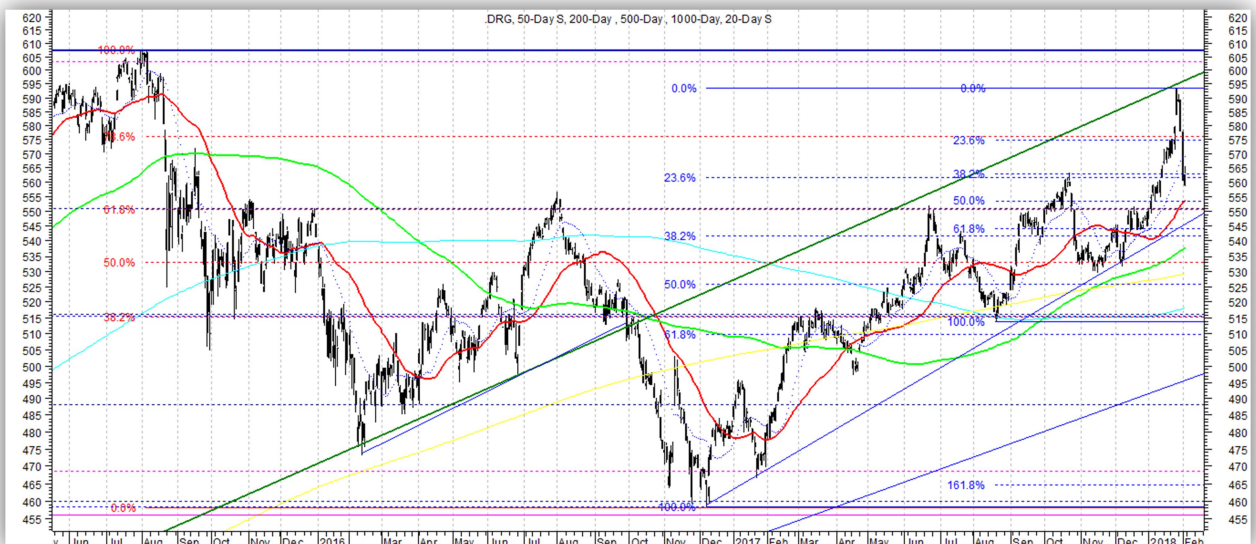
### NYSE Biotech Index-BTK

Bullish. Pulling back from Fib Extension; nearing “buyable” support level, and possibly a test of its ATH breakout level. Key support levels: 4625, 4500, 4400, 4050, 3750, 3300. Key resistance levels: 4960.



### NYSE Pharma Index-DRG

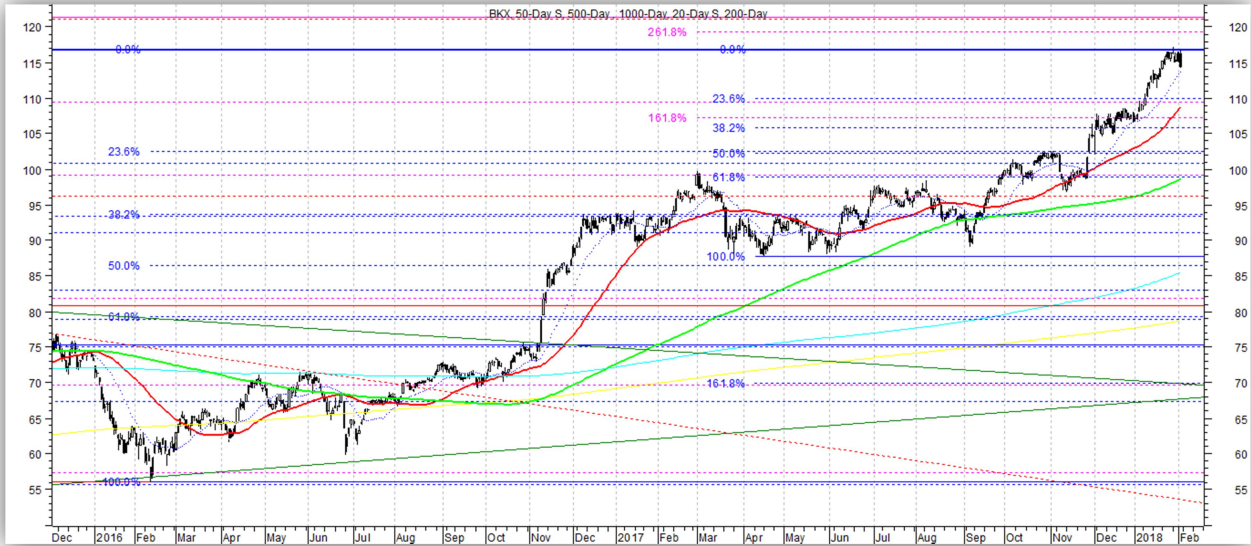
Bullish. Sharp pullback from multi-year highs; approaching test of recent breakout level now. Key support levels: 562, 552, 545, 530, 515, 505, 458. Key resistance levels: 575, 593, 607.





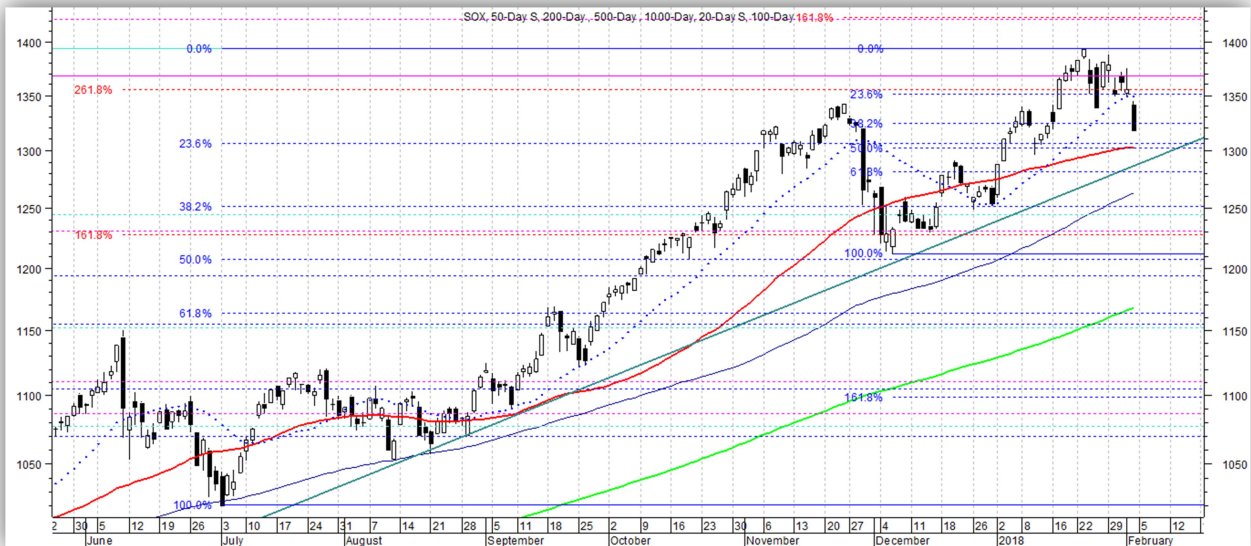
### KBW Bank Index-BKX

Bullish. Consolidating near multi-year highs. Don't chase here. Key support levels: 110, 106, 102, 99, 93, 89, 85, 81.50. Key resistance levels: 117, 119, 121.



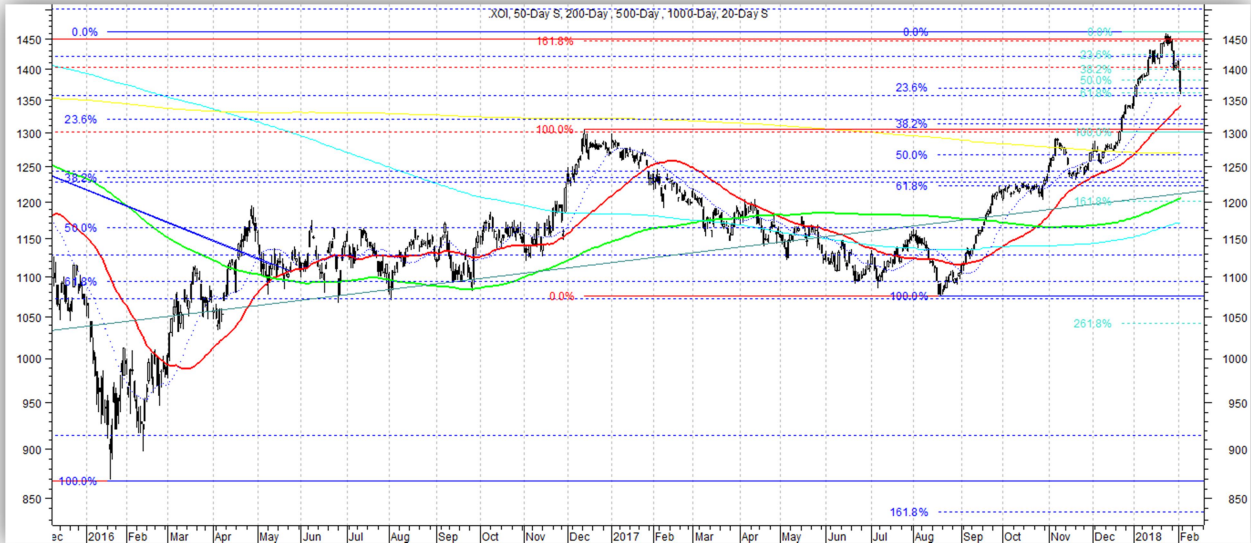
### PHLX Semiconductor Index-SOX

Bullish. Pulling back from recent breakout to ATH; nearing test of good "buyable" support/breakout level. Key support levels: 1304, 1280, 1250, 1210, 1160, 1100, 1086, 1080, 1040-1050, 1000. Key resistance levels: 1355, 1390, 1420.



### NYSE Oil & Gas Index-XOI

Bullish. Pulling back from multi-year highs & resistance now. Hitting good “buyable” support now, and approaching test of recent breakout level. Key support levels: 1360, 1310, 1230, 1190, 1072. Key resistance levels: 1400, 1450, 1675, 1730.



### PHLX Oil Services Index-OSX

Bullish. Pulling back after failing at key downtrend and Fib resistance. Nearing potential support now, and possible test of recent breakout level. Key support levels: 148, 142, 136, 132, 117.50, 104, 97. Key resistance levels: 160, 165-167, 187, 195, 217.





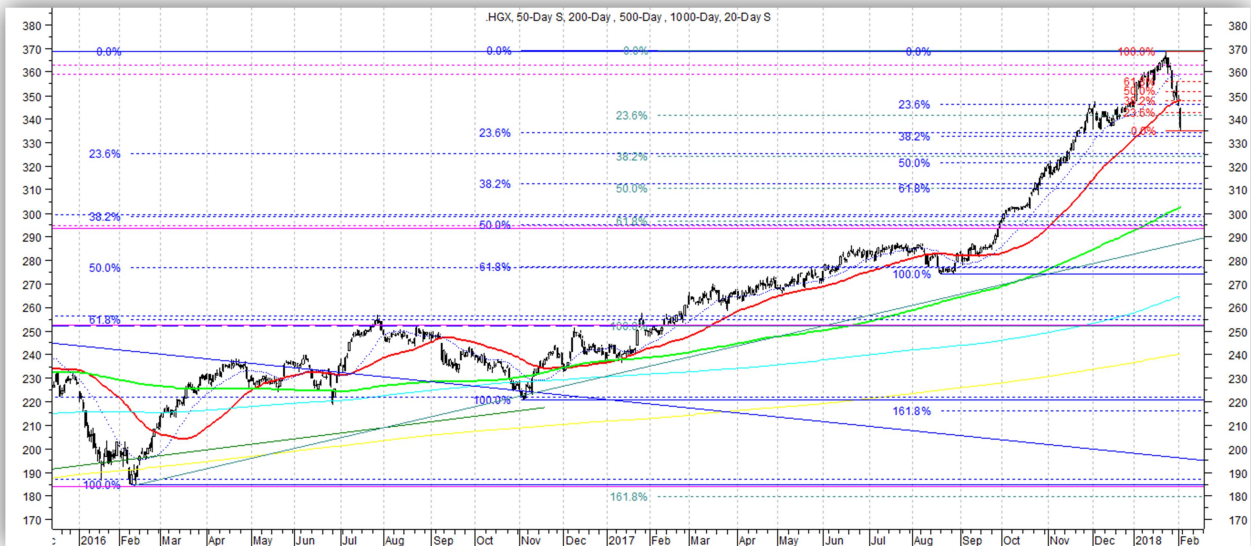
### PHLX Gold/Silver Index-XAU

Rangebound. Pulling back from resistance near top of recent range; nearing possible support in middle of range.  
 Key support levels: 84, 82, 80, 75, 71.50, 67. Key resistance levels: 89, 93, 97-99, 105, 114.



### PHLX Housing Index-HGX

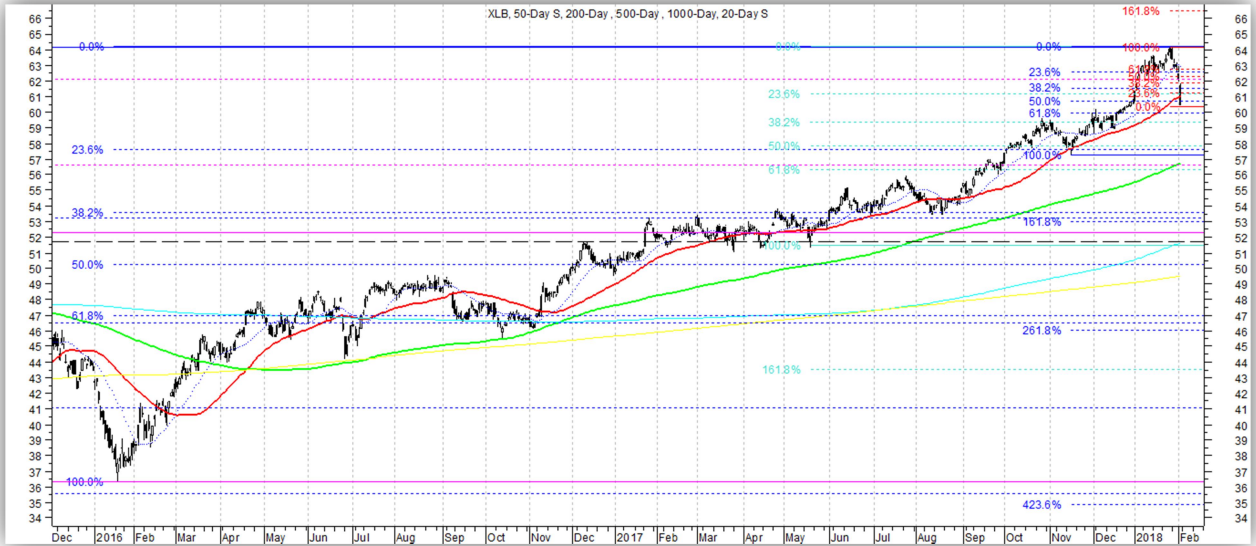
Bullish. Pulling back from all-time highs & key Fib Extensions now; hitting good “buyable” support levels now. Key support levels: 335, 325, 310, 297, 284, 275, 262, 256. Key resistance levels: 347, 355, 364-368.



## Sector ETF's

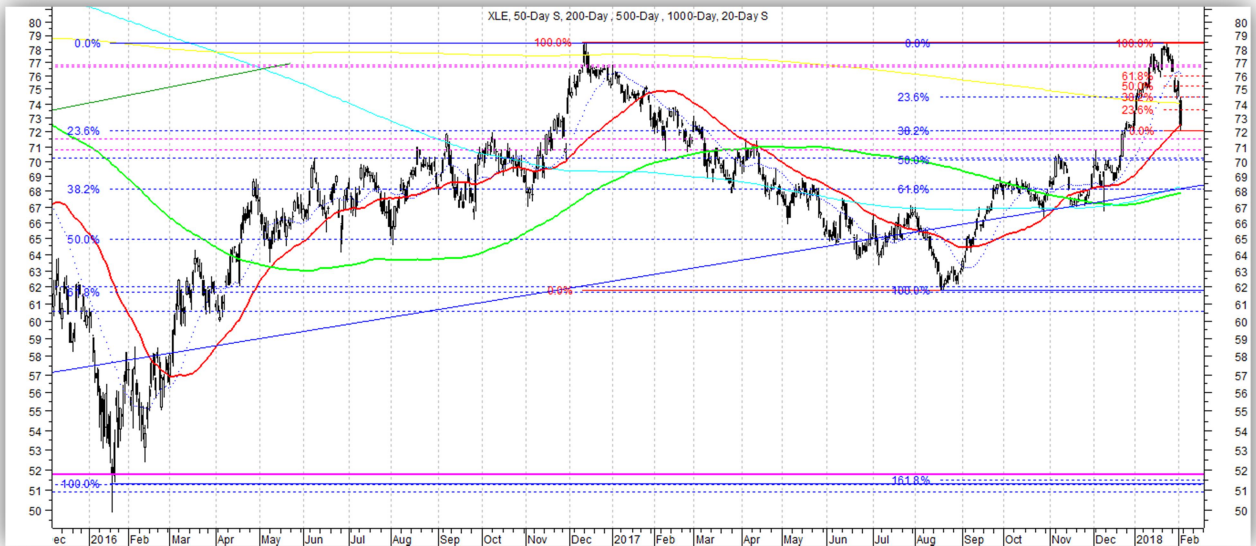
### Basic Materials Sector SPDR-XLB

Bullish. Pulling back from all-time highs & key Fib Extensions now; hitting good “buyable” support levels now. A favored sector. Key support levels: 61, 60, 57.50, 56.50, 53.25, 50.70. Key resistance levels: 62.75, 64.



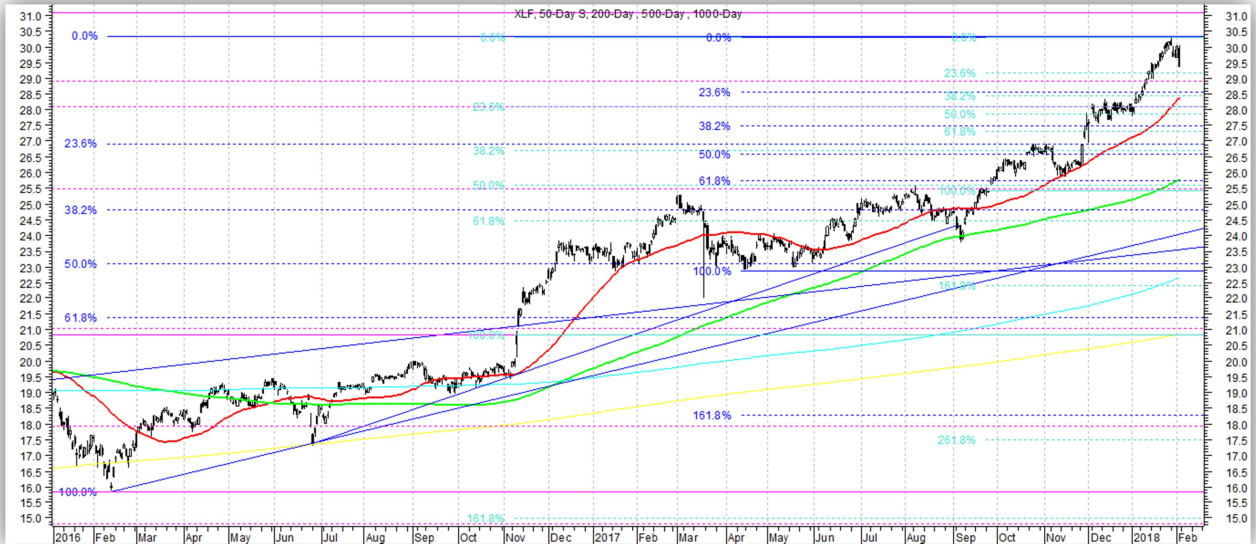
### Energy Sector SPDR-XLE

Bullish. Pulling back from multi-highs & key resistance; hitting good “buyable” support levels now. Key support levels: 72, 70, 68, 67, 64.50, 61.90, 60.80. Key resistance levels: 74.50, 76, 78.50.



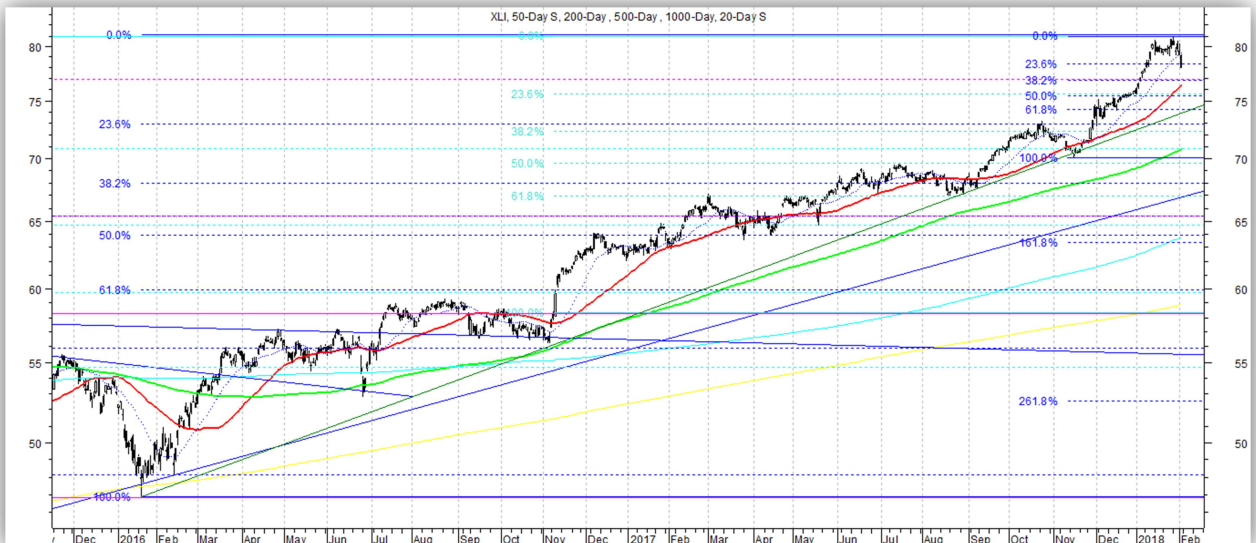
### Financial Sector SPDR-XLF

Bullish. Consolidating near multi-year highs. Don't chase here. A favored sector. Key support levels: 29, 28.5, 28, 27.40, 26.70, 25.50, 23.90, 23, 21.72, 20.80, 20.60, 19.50. Key resistance levels: 30.30, 31.10.



### Industrial Sector SPDR-XLI

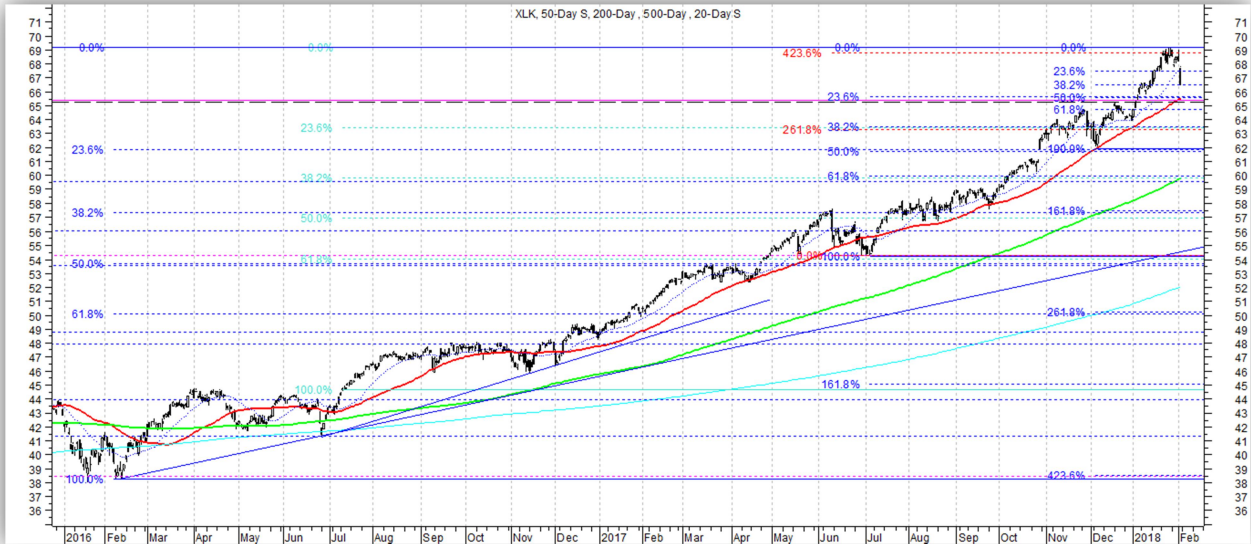
Bullish. Finally pulling back from highs; approaching good “buyable” support levels. A favored sector. Key support levels: 77, 74, 73, 70, 67.50, 63, 61.75, 60.50. Key resistance levels: 81.





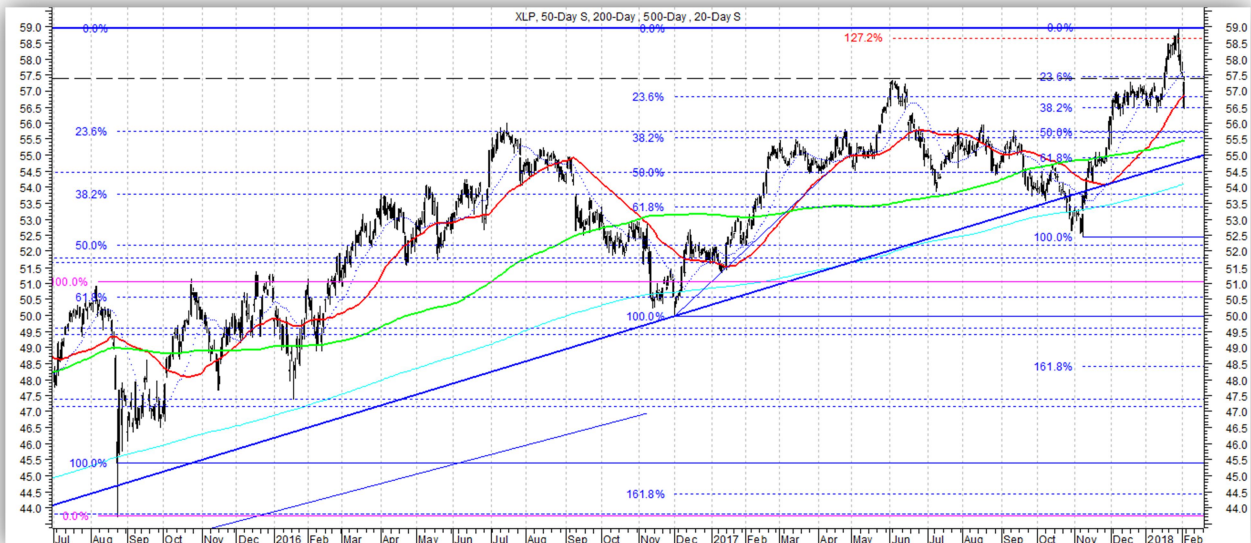
### Technology Sector SPDR-XLK

Bullish. Finally pulling back from highs; approaching good “buyable” support levels. A favored sector. Key support levels: 66.50, 65.50, 64.70, 63.50, 62, 60, 56, 54, 49. Key resistance levels: 69.20.



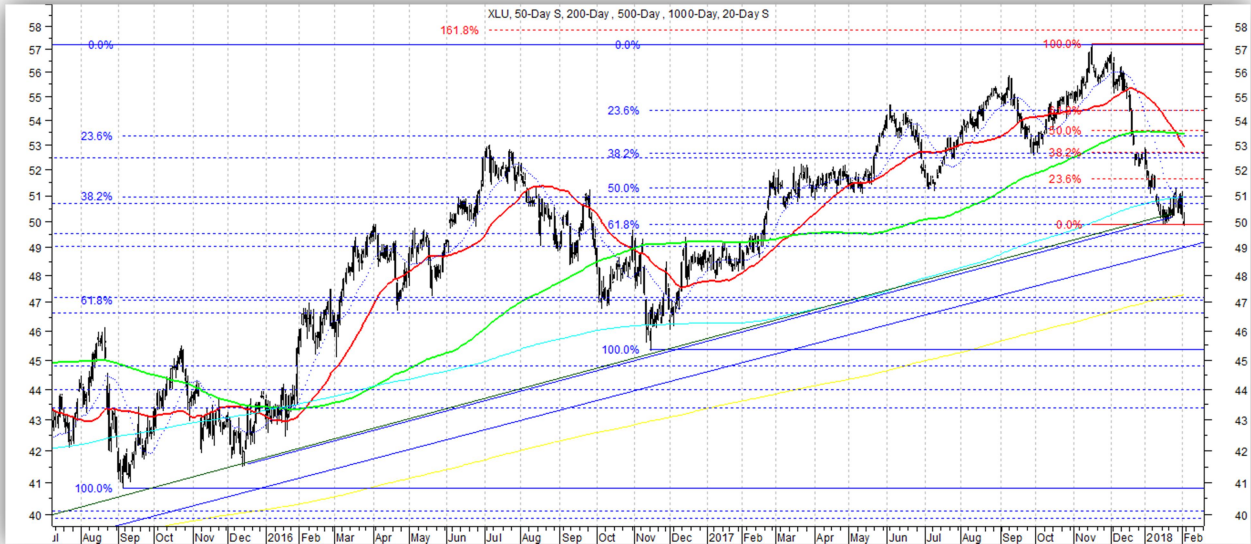
### Consumer Staples Sector SPDR-XLP

Bullish. Pulling back from recent breakout to all-time highs; testing breakout level now. A favored sector. Key support levels: 56.50, 55.50, 54.90, 54.30, 53.30, 52.65, 51.35, 50.60. Key resistance levels: 57.40, 58.70.



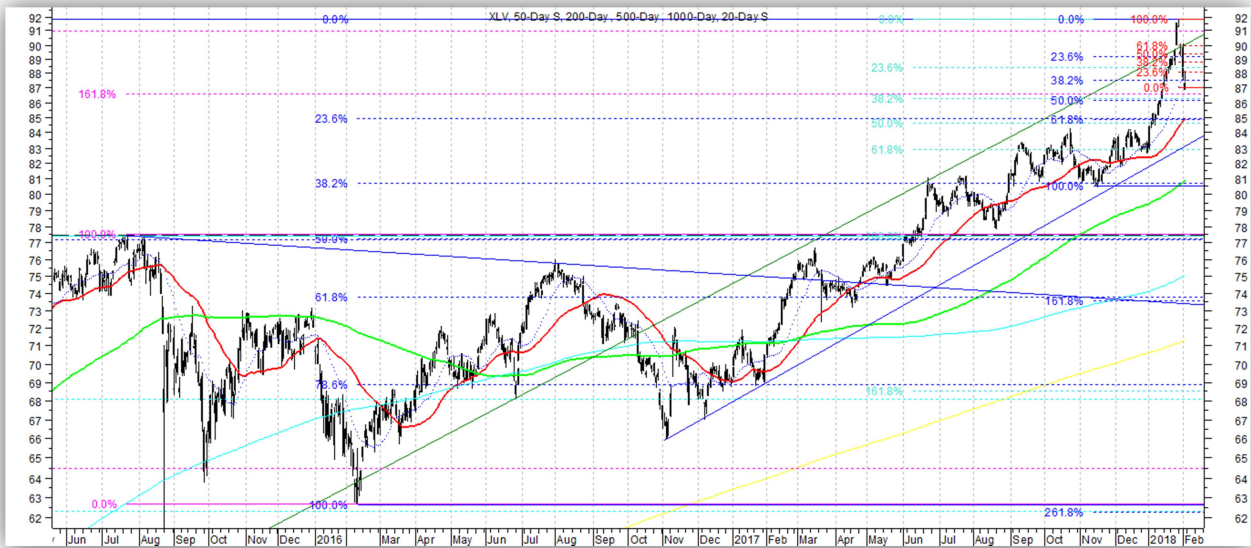
### Utility Sector SPDR-XLU

Bearish. Bouncing off key uptrend line. Selling rallies. Key support levels: 50, 49, 47. Key resistance levels: 51.60, 52.70, 53.60, 54.50, 55.40, 57.20, 57.80.



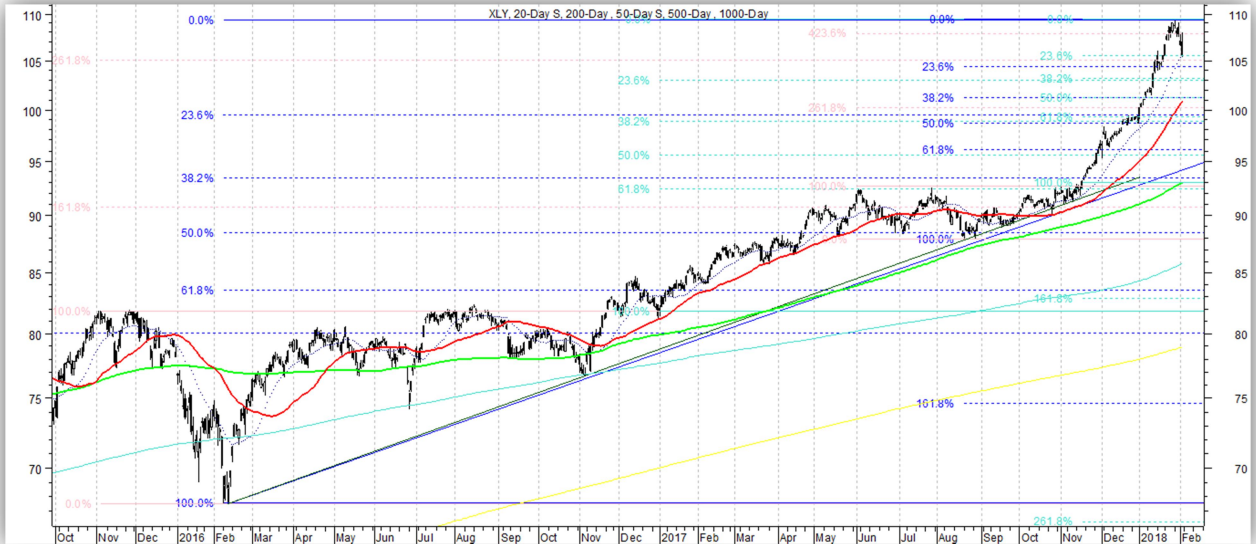
### Health Care Sector SPDR-XLV

Bullish. Pulling back from highs/key Fib Extension; approaching possible test of breakout level. A favored sector. Key support levels: 86.25, 85, 80.50, 79, 77.80, 75.70, 73.50, 71.80. Key resistance levels: 90, 92.



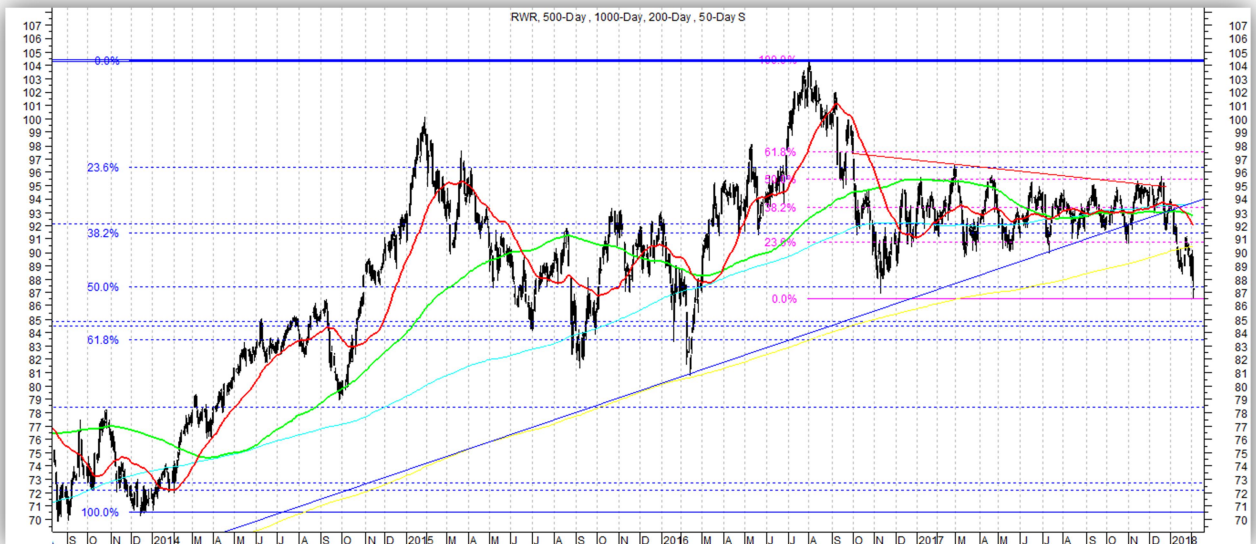
### Consumer Discretionary Sector SPDR-XLY

Bullish. Finally pulling back from highs; approaching initial support levels. A favored sector. Key support levels: 104.25, 103, 101, 99, 96, 94.75, 91, 89, 86.50, 85.50, 83.75. Key resistance levels: 109.



### REIT Sector SPDR-RWR

Bearish. Breaking down further from 12-month range. Key support levels: 87.50, 84.50, 78.50, 72.50. Key resistance levels: 91, 93.50, 95.50, 97.70.

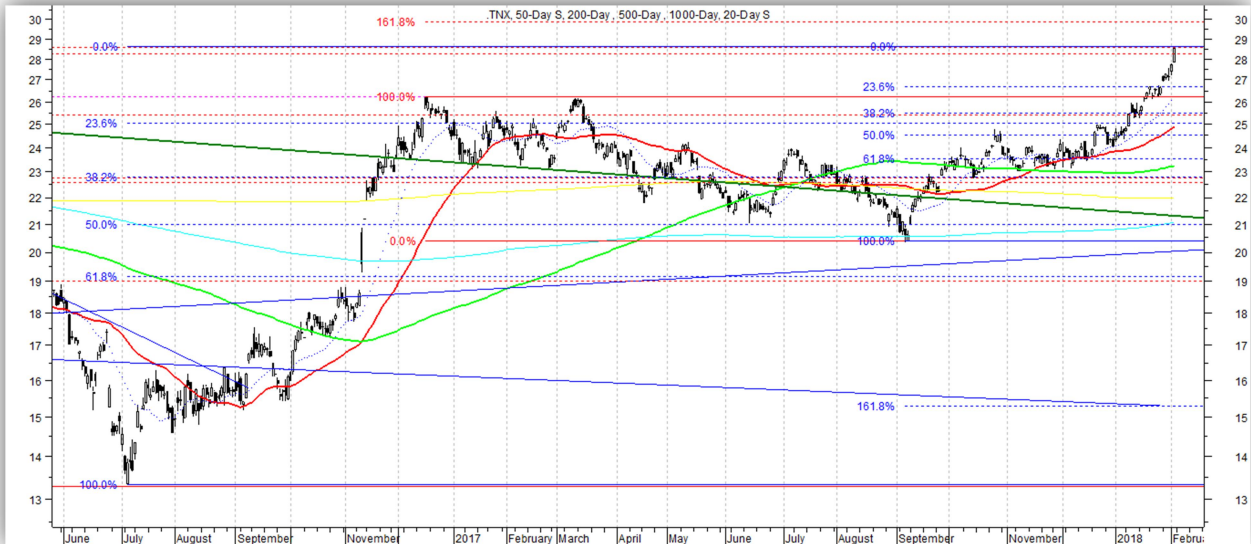




# Bonds, Commodities & Currencies

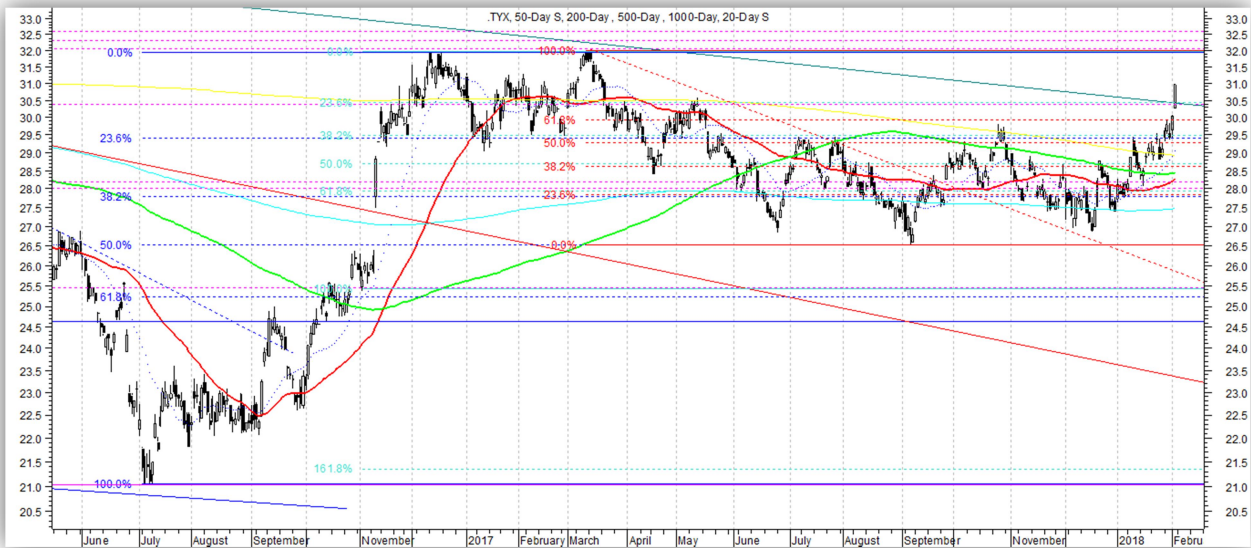
## 10-Year U.S. Treasury Yield

Bullish. Extending breakout to multi-year highs. Testing potential near-term resistance now ~2.85. Key support levels: 2.65, 2.55, 2.35, 2.26, 2.18-2.22, 2.13, 2.04, 1.98, 1.82. Key resistance levels: 2.85, 3.00, 3.40.



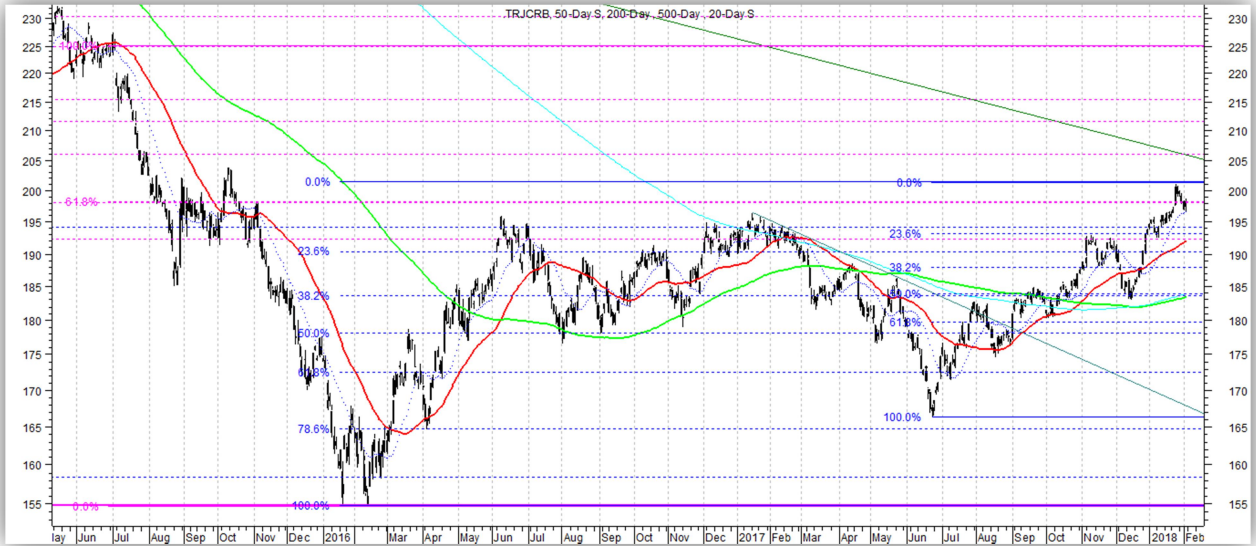
## 30-Year U.S. Treasury Yield

Bullish. Broke key “ultra low-rate regime”-defining post-2011 Down trendline. Key support levels: 2.94, 2.80, 2.65, 2.62, 2.52. Key resistance levels: 3.20-3.25.



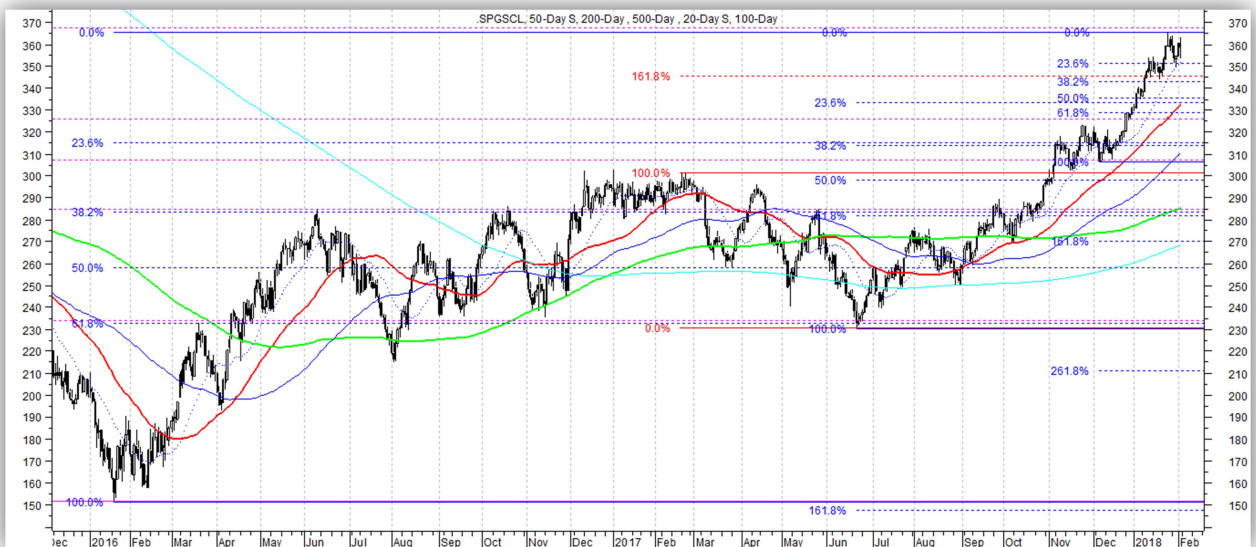
### CRB Commodity Index

Bullish. Consolidating breakout to multi-year highs. Looking for moderate further gains in near to intermediate-term. Key support levels: 193, 190, 184, 180, 175, 166.30, 163.90, 155. Key resistance levels: 201, 206, 215, 225.



### S&P GSCI Crude Oil Index

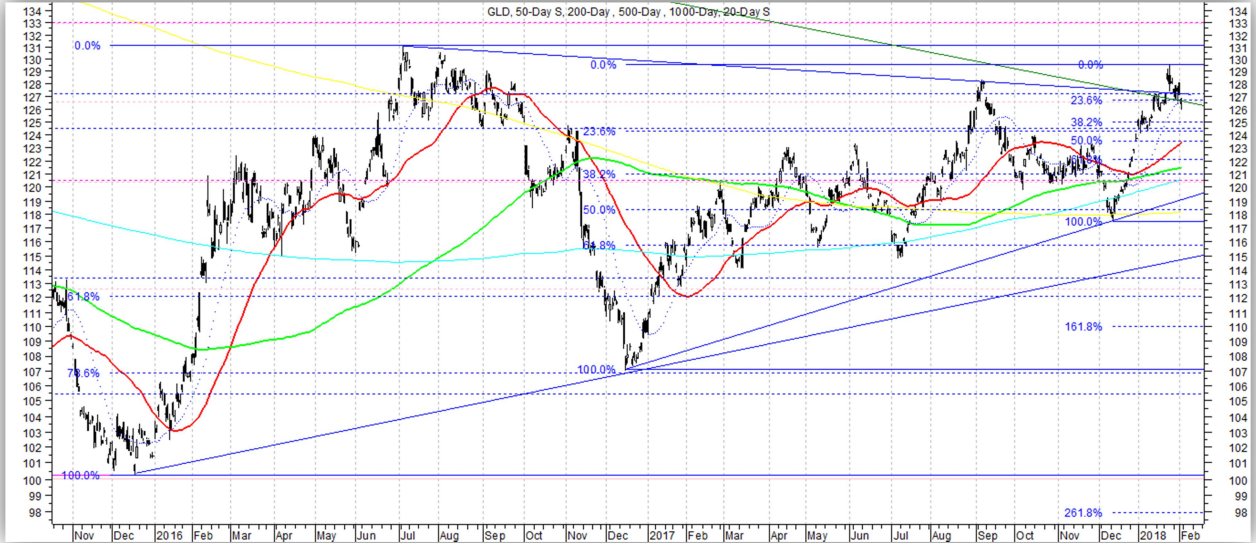
Bullish. Consolidating at multi-year highs. More moderate upside possible, but nearing some resistance now. Key support levels: 351, 343, 335, 329, 315, 305, 283, 265, 231, 215, 209. Key resistance levels: 367, 403, 415.





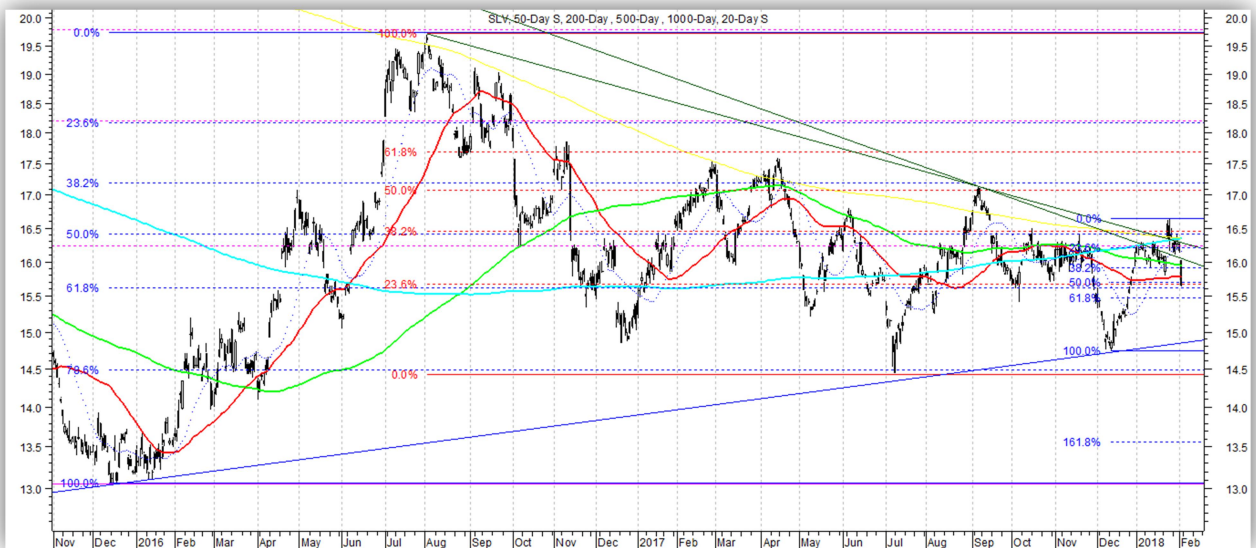
### SPDR Gold Trust (GLD)

Bullish. Testing break of post-2011 Down trendline. Key support levels: 126.50, 124.50, 122, 121, 118, 115.50, 107. Key resistance levels: 129.50, 131, 133.



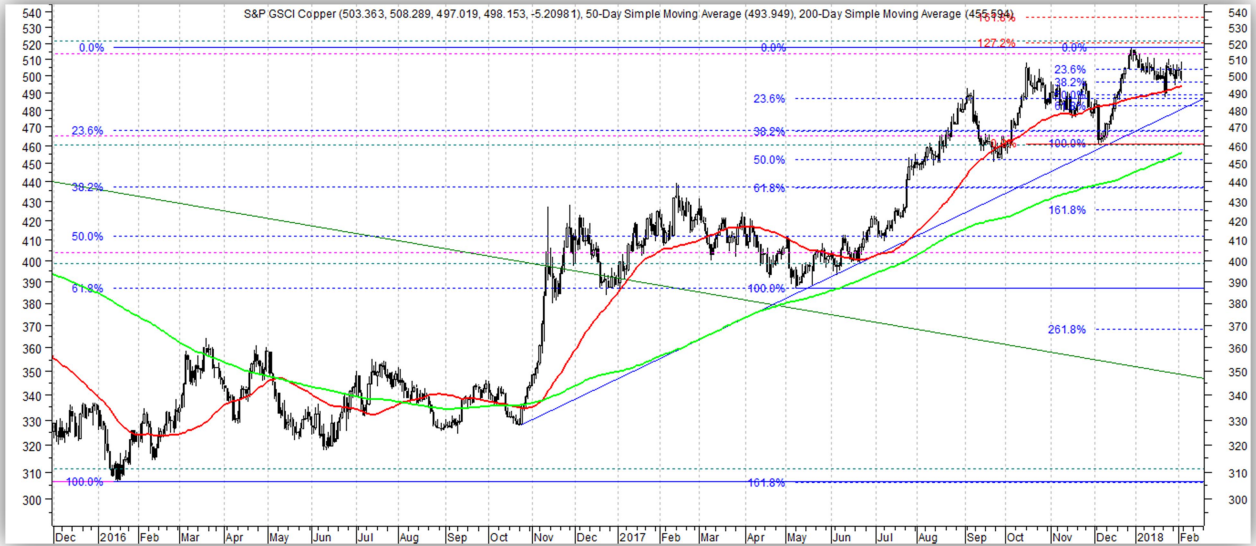
### iShares Silver Trust (SLV)

Rangebound. Failed to hold break above post-2011 Down trendline. Back into recent range; testing possible near-term support now. Key support levels: 15.70, 15.50, 14.50, 13.05. Key resistance levels: 16.20, 16.60, 17.10, 17.60, 17.85, 18.15.



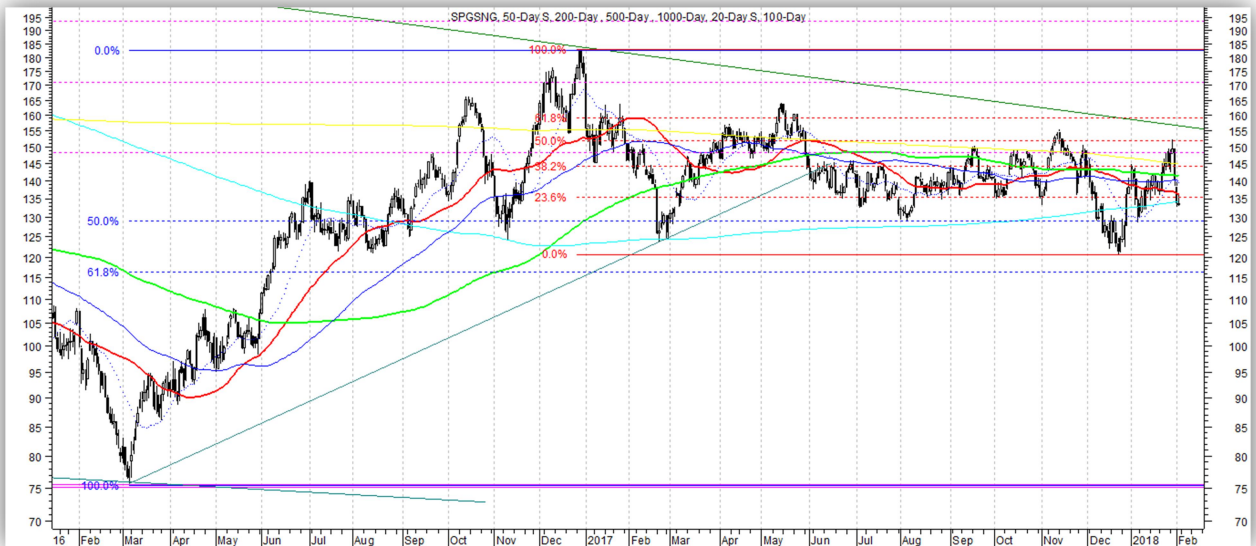
### S&P GSCI Copper Index

Bullish. Consolidating recent bounce off support. Key support levels: 485, 460, 432, 387, 384, 372, 357. Key resistance levels: 520, 560.



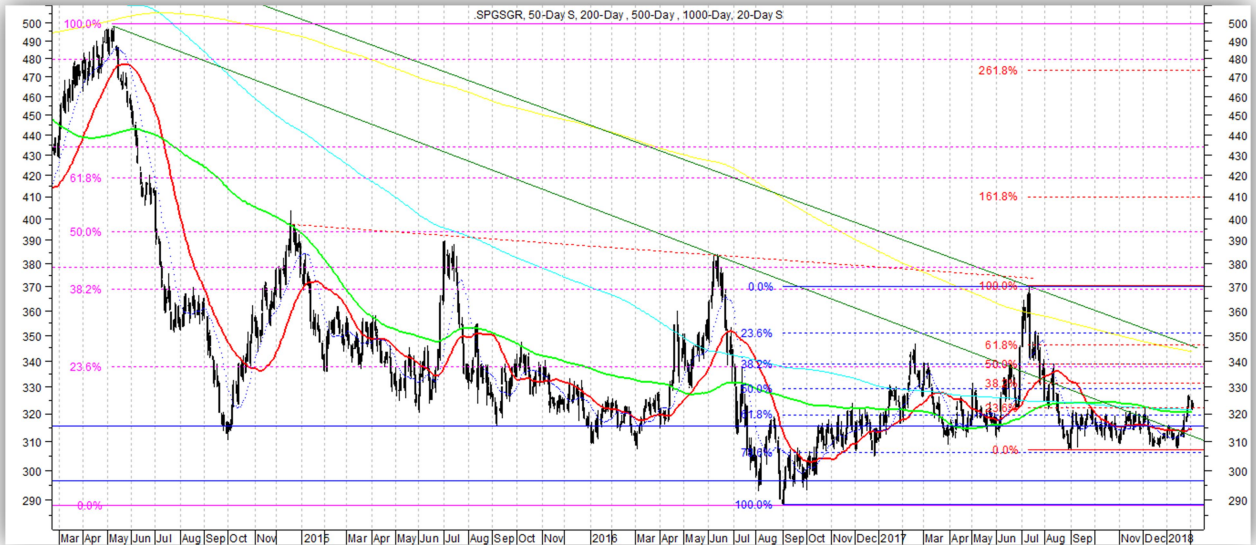
### S&P GSCI Natural Gas Index

Rangebound. Key support levels: 130, 116-120. Key resistance levels: 152, 160, 182.50.



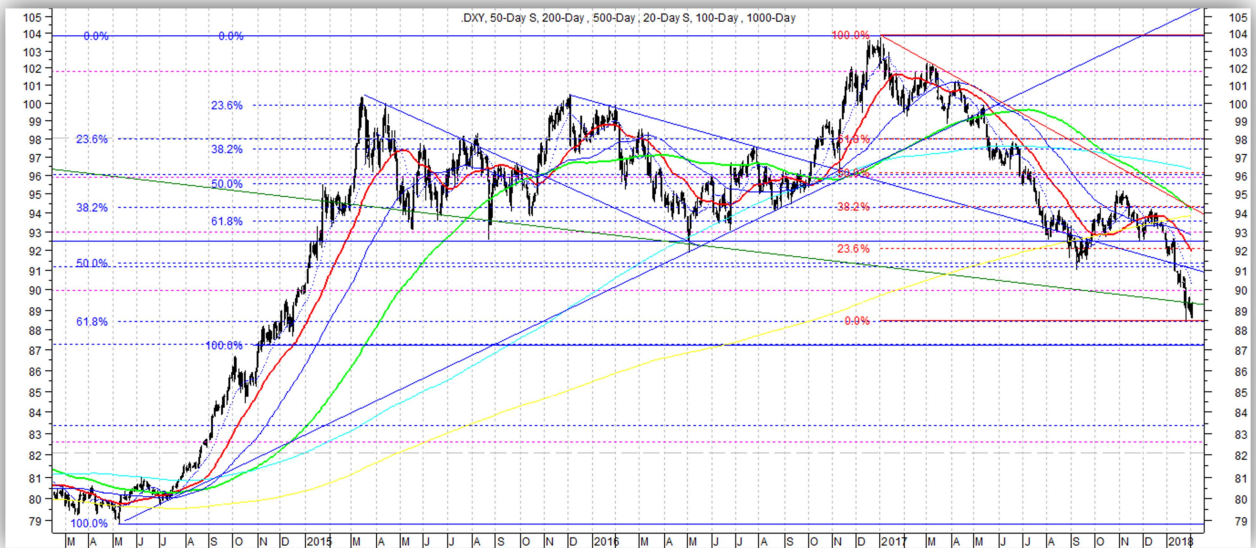
## S&P GSCI Grains Index

Bearish. Minor uptick but still holding near 12-month lows. Key support levels: 306, 297, 288. Key resistance levels: 331, 346, 370, 379.



## U.S. Dollar Index (DXY)

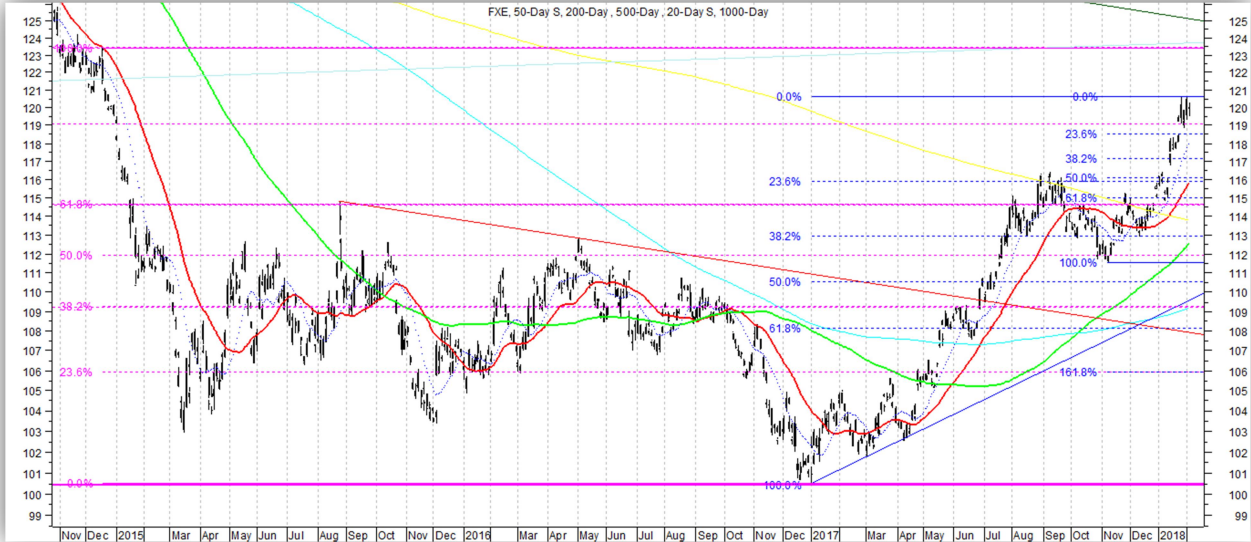
Bearish. Testing top of broken post-1985 Down trendline. Key support levels: 89.20, 87.40. Key resistance levels: 91.25, 92, 94.30, 96, 98, 103.80.





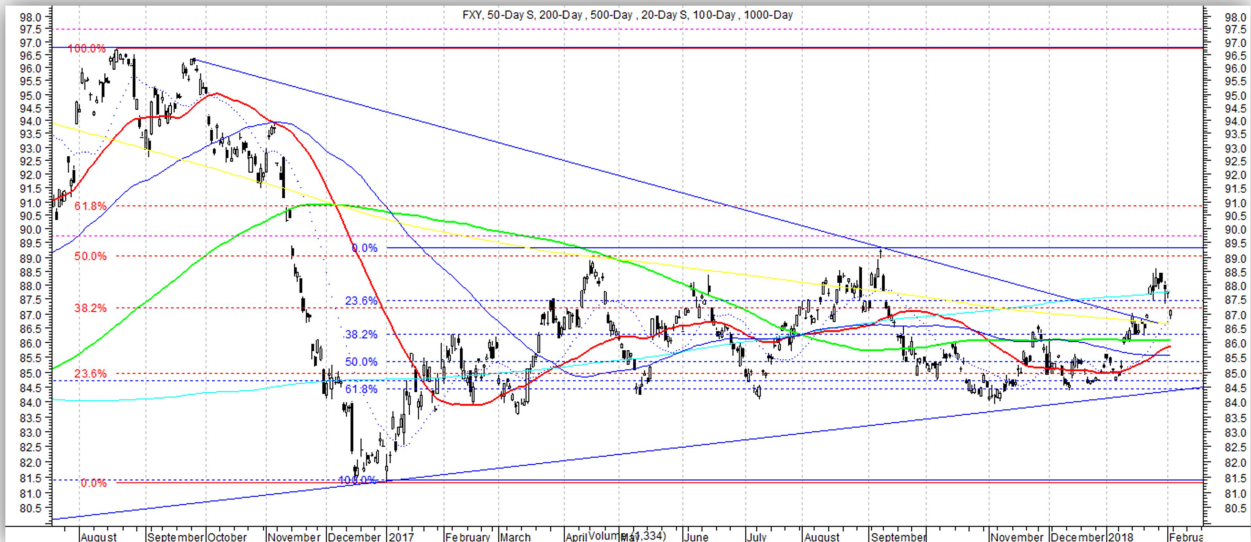
## Guggenheim CurrencyShares Euro Trust (FXE)

Bullish. Consolidating multi-year highs. Key support levels: 118.50, 117, 116, 114.70, 113.50, 111.50, 110.25, 108.50, 106, 100.4. Key resistance levels: 123.50.



## Guggenheim CurrencyShares Yen Trust (FXJ)

Bullish. Testing break above near-term Down trendline. Key support levels: 86.40, 84.50, 81.40. Key resistance levels: 89, 90.86.



## Relative Strength Rankings-1000 Most Liquid ETF's

Rankings based on JLFMI's proprietary Fund Selection Model. This is a quantitative model designed to identify securities most likely to outperform over intermediate-term, i.e., 2-6 months. Long candidates may be best chosen from top 10% of Rankings while bottom 40% may best be avoided.

Ticker	Security Name	Rank				
		2/2/2018	1/26/2018	1/19/2018	1/12/2018	1/5/2018
UDOW	PROSHARES ULTRAPRO DOW 30 ETF	1	1	1	1	1
TECL	DIREXION DAILY TECHNO BULL 3X ETF	2	2	2	2	2
UPRO	PROSHARES ULTRAPRO S&P 500 ETF	3	3	5	6	3
FBGX	UBS ENHANCED LARGE CAP GROWTH ETN	4	4	6	5	4
DDM	PROSHARES ULTRA DOW 30 ETF	5	5	7	9	7
SPXL	DIREXION DAILY S&P 500 BULL 3X ETF	6	7	9	11	5
EWO	ISHARES MSCI AUSTRIA CAPPED ETF	7	8	17	16	20
ROM	PROSHARES ULTRA TECHNOLOGY ETF	8	12	8	4	8
TQQQ	PROSHARES ULTRAPRO QQQ ETF	9	10	11	7	10
SOXL	DIREXION SEMICONDUCTOR BULL 3X ETF	10	6	3	3	6
ROBO	ROBO GBL RBOTCS AND AUTMATN INDX ETF	11	12	12	12	11
QLD	PROSHARES ULTRA QQQ ETF	12	17	15	10	13
FGM	FIRST TRUST GERMANY ALPHADEX ETF	13	60	44	18	30
EDC	DIREXION DAILY EMG MRKTS BULL 3X ETF	14	20	43	35	79
UYM	PROSHARES ULTRA BASIC MATERIALS ETF	14	15	31	52	49
FDN	FIRST TRUST INTERNET INDEX CF ETF	16	18	33	20	26
MTUM	ISHARES EDGE MSCI USA MOMNTM ETF	17	25	21	26	14
IXN	ISHARES GLOBAL TECH ETF	18	28	19	13	17
DZK	DIREXION DAILY DVP MRKTS BULL 3X ETF	19	69	70	48	64
ITA	ISHARES US AEROSPACE DEFENSE ETF	20	23	16	36	21
EFO	PROSHARES ULTRA MSCI EAFE ETF	21	76	72	58	95
ITB	ISHARES US HOME CONSTRUCT ETF	22	11	18	18	12
LIT	GLOBAL X LITHIUM ETF	23	14	4	7	9
IGV	ISHARES NORTH AMRN TECH SOFT ETF	24	24	28	30	16
IGM	ISHARES NORTH AMERICAN TECH ETF	25	30	30	29	24
FAS	DIREXION DAILY FINANCIAL BULL 3X ETF	26	31	24	24	18
FFTY	INNOVATOR IBD 50 ETF	27	9	10	38	24
PSJ	POWERSHARES DYNAMIC SOFTWARE ETF	28	15	29	14	23
SOXX	ISHARES PHLX SEMICONDUCTOR ETF	29	22	14	17	19
XAR	SPDR S&P AEROSPACE DEFENSE ETF	30	39	20	55	39
PXLG	POWERSHARES RSSL TP 200 PR GRWT ETF	31	37	35	33	30
SMH	VANECK VECTORS SEMICONDUCTOR ETF	31	25	13	15	15
PNQI	POWERSHARES NASDAQ INTERNET ETF	33	52	65	47	88
WOOD	ISHARES GLOBAL TIMBER FORESTRY ETF	34	45	49	49	70
VGT	VANGUARD INFORMATION TECHNOLOGY ETF	35	47	37	34	38
XPP	PROSHARES ULTRA FTSE CHINA 50 ETF	36	29	58	43	67
FTEC	FIDELITY MSCI INFOR TECH INDX ETF	37	49	38	32	37
PPA	POWERSHARES AEROSPACE & DEFENSE ETF	38	36	23	51	33
DFJ	WISDOMTREE JAPAN SMALCP DIVIDEND ETF	39	87	102	84	87
PWB	POWERSHARES DYNAMIC LRE CAP GTH ETF	40	35	46	54	40
CHIQ	GLOBAL X CHINA CONSUMER ETF	41	19	31	41	48
FXL	FIRST TRUST TECHNOLOGY ALPHADEX ETF	42	42	22	40	36
YINN	DIREXION DLY FTSE CHINA BUL 3X ETF	43	38	68	57	69
EURL	DIREXZN DLY FTSE EURP BUL 3X SHS ETF	44	106	89	82	76
URTY	PROSHARES ULTRAPRO RUSSELL 2000 ETF	45	42	45	79	56
TNA	DIREXION DAILY SMALL CAP BULL 3X ETF	46	44	47	79	59
REMX	VANCK VCTR RARE EARTH STRTG METL ETF	47	20	27	22	34
UYG	PROSHARES ULTRA FINANCIALS ETF	48	74	57	85	58

## The Lyons Share

RYT	GUGGENHEIM S&P 500 EQUAL WE TECH ETF	49	46	40	63	46
SOCL	GLOBAL X SOCIAL MEDIA INDEX ETF	50	54	52	25	42
IYW	ISHARES US TECHNOLOGY ETF	51	67	47	37	44
MIDU	DIREXION DAILY MID CAP BULL 3X ETF	52	64	61	152	61
XLK	TECHNOLOGY SELECT SECTOR SPDR ETF	53	56	50	42	45
GXC	SPDR S&P CHINA ETF	54	49	56	46	57
FPX	FIRST TRUST IPOX-100 INDEX ETF	55	71	67	115	103
CQQQ	GUGGENHEIM CHINA TECHNOLOGY ETF	56	34	26	21	28
IPKW	POWERSHARES INTL BUYBACK ACHIEV ETF	57	61	55	89	137
CUT	GUGGENHEIM MSCI GLOBAL TIMBER ETF	58	82	63	92	101
FNDC	SCHWAB FUNDAMENTAL INTL SMAL COM ETF	59	130	129	72	109
INDL	DIREXN DAILY INDIA BUL 3X SHARES ETF	60	73	126	68	120
QTEC	FIRST TST NASDAQ 100 TEC ID ETF	61	53	25	39	41
SKYY	FIRST TRUST ISE CLOUD COMP IDX ETF	61	68	66	93	78
FSZ	FIRST TRUST SWITZ ALPHADEX ETF	63	244	176	88	166
FPXI	FIRST TRUST INTERNATIONAL IPO ETF	64	99	78	65	82
VIDI	VIDENT INTERNATIONAL EQUITY ETF	64	162	170	96	336
EMQQ	EMQQ EMRNG MKT INTRNT ECMRC ETF	66	54	54	49	54
PSI	POWERSHARE DYNAMIC SEMICONDUCTOR ETF	67	27	36	69	32
JKE	ISHARES MRNSTAR LRG CAP GRW ETF	68	62	84	70	73
MXI	ISHARES GLOBAL MATERIALS ETF	69	101	142	135	257
SCIF	VANCK VCTR INDIA SML CAP INDX ETF	70	79	96	112	65
IWY	ISHARES RUSSELL TOP 200 GROWTH ETF	71	57	50	59	49
PALL	ETFS PHYSICAL PALLADIUM SHARES ETF	72	40	76	26	80
SCJ	ISHARES MSCI JAPAN SMALL CAP ETF	72	115	123	91	98
IWF	ISHARES RUSSELL 1000 GROWTH ETF	74	66	59	72	63
FIGY	BARCLAYS GLOBAL HIGH YIELD ETN	75	122	77	76	124
BKF	ISHARES MSCI BRIC ETF	76	62	93	61	109
SMIN	ISHARES MSCI INDIA SMALL CAP ETF	77	90	90	78	62
VONG	VANGUARD RUSSELL 1000 GROWTH ETF	78	65	64	81	60
FCA	FIRST TRUST CHINA ALPHADEX ETF	79	51	68	67	75
DBKO	DETSX X TRK MSCI STH KRA HDG EQY ETF	80	100	86	53	66
EEMA	ISHARES MSCI EMERGING MARKETS AS ETF	81	93	114	62	100
DLS	WISDOMTREE INTL SMALLCP DIVIDEND ETF	82	141	160	127	239
CHAU	DIREXION DLY CSI 300 CHNA 2X SHS ETF	83	47	78	74	71
PTH	PWRSHRS DWA HEALTHCARE MNTM ETF	84	75	81	90	54
ARGT	GLOBAL X MSCI ARGENTINA ETF	85	72	42	26	34
RPG	GUGGENHEIM S&P 500 PURE GROWTH ETF	86	86	74	122	51
DXJS	WISDOMTREE JAPAN HEDGED SC EQUITY ETF	87	175	143	125	127
PGJ	POWERSHARES GOLDEN DRAGON ETF	88	58	53	74	89
UWM	PROSHARES ULTRA RUSSELL 2000 ETF	89	83	88	165	113
KWEB	KRANESHARES CSI CHINA INTERNET ETF	90	41	39	31	29
DIA	SPDR DOW JONES INDUSTRIAL AVRG ETF	91	81	80	97	83
EWQ	ISHARES MSCI FRANCE ETF	92	342	308	130	83
PDN	PWRSHRS DEV MKTS EX US SMALL MID ETF	93	165	143	98	172
FNI	FIRST TRUST ISE CHINDIA INDEX ETF	94	77	70	60	103
THD	ISHARES MSCI THAILAND CAPPED ETF	95	105	134	87	149
EWY	ISHARES MSCI SOUTH KOREA CAP ETF	96	149	119	76	90
CURE	DRXN DAILY HEALTHCRE BULL 3X SHS ETF	97	92	73	95	73
EEM	ISHARES MSCI EMERGING MARKETS ETF	97	95	157	105	234
PIE	POWERSHARES DWA EMRG MKTS MOM ETF	99	84	130	101	135
MVV	PROSHARES ULTRA MIDCAP 400 ETF	100	120	98	262	114
INCO	COLUMBIA INDIA CONSUMER ETF	101	69	75	44	53
EXI	ISHARES GLOBAL INDUSTRIALS ETF	102	176	127	137	134
GMF	SPDR S&P EMERGING ASIA PACIFIC ETF	103	94	132	94	106
MTK	SPDR MORGAN STANLEY TECHNOLOGY ETF	103	32	34	23	22
SCHG	SCHWAB US LARGE CAP GROWTH ETF	105	95	91	100	85
CGO	CALAMOS GLOBAL TOTAL RETURN CF	106	163	105	104	52
IYJ	ISHARES US INDUSTRIALS ETF	107	109	107	201	121
PSCH	POWERSHARES S&P SMAL HEALTH PORT ETF	107	33	41	56	27
QQQ	POWERSHARES QQQ TRUST SRS 1 ETF	109	110	83	66	81
GVAL	CAMBRIA GLOBAL VALUE ETF	110	212	234	150	376

## The Lyons Share

RXL	PROSHARES ULTRA HEALTH CARE ETF	111	106	85	122	86
FJP	FIRST TRUST JAPAN ALPHADEX ETF	112	272	163	160	216
IEMG	ISHARES CORE MSCI EMERGING ETF	113	119	179	119	249
EWJ	ISHARES MSCI JAPAN ETF	114	249	216	173	188
RTM	GUGGENHEIM S&P 500 EQUAL WEI MAT ETF	115	140	139	222	176
ONEQ	FIDELITY NASDAQ COMPOSITE INDX ETF	116	124	94	108	99
AAXJ	ISHARES MSCI ALL COUNT ASA EX JP ETF	117	108	121	83	125
CHIX	GLOBAL X CHINA FINANCIALS ETF	118	97	153	102	158
EPOL	ISHARES MSCI POLAND CAPPED ETF	119	135	325	148	191
EWN	ISHARES MSCI NETHERLANDS ETF	120	230	198	129	154
PRN	PWRSHRS DWA INDUSTRIALS MNTM ETF	121	91	97	205	144
FTCS	FIRST TRUST CAPITAL STRENGTH ETF	122	98	109	131	91
IVW	ISHARES S&P 500 GROWTH ETF	123	111	100	108	97
MGK	VANGUARD MEGA CAP GROWTH ETF	124	101	87	86	93
QCLN	FIRST TST NASDAQ CLEAN ED ID ETF	125	133	92	117	117
SPYG	SPDR S&P 500 GROWTH ETF	125	117	103	113	105
VOOG	VANGUARD S&P 500 GROWTH ETF	127	115	100	103	94
SCHC	SCHWAB INTERNATNAL SMALL CAP EQY ETF	128	226	194	107	169
IAI	ISHRS US BRKR DEALRS SCURTS EXCH ETF	129	134	136	176	141
KCE	SPDR S&P CAPITAL MARKETS ETF	130	89	98	133	112
TAO	GUGGENHEIM CHINA REAL ESTATE ETF	131	104	95	70	68
IWP	ISHARES RUSSELL MID CAP GROWTH ETF	132	128	111	177	117
VSS	VGRD FTSE ALL WRLD EX US SML CAP ETF	133	199	259	157	293
INTF	ISHARES EDG MSCI MLTFCR INTL ETF	134	309	453	363	407
EWG	ISHARES MSCI GERMANY ETF	135	425	325	121	151
INXX	COLUMBIA INDIA INFRASTRUCTR ETF	136	136	252	116	130
ECH	ISHARES MSCI CHILE CAPPED ETF	137	111	104	207	539
GMM	SPDR S&P EMERGING MARKETS ETF	138	59	61	45	43
XLB	SPDR FUND MATERIALS SELECT SECTR ETF	138	154	186	281	202
DFE	WISDOMTREE EUROPE SMLCP DIVIDEND ETF	140	195	251	175	172
DGRW	WISDOMTREE US QLT DIV GRW ETF	141	111	82	132	108
DIM	WISDOMTREE INTL MIDCAP DIVIDEND ETF	142	302	271	170	299
VPL	VANGUARD FTSE PACIFIC ETF	143	224	236	158	282
XBI	SPDR S&P BIOTECH ETF	144	150	128	182	147
CHW	CALAMOS GLOBAL DYNAMIC INCOME CF	145	345	159	174	156
WBIG	WBI TACTICAL LCY ETF	146	143	138	154	132
FNDF	SCHWAB FUNDAMENTAL INL LARGE COM ETF	147	379	282	143	218
PTF	PWRSHRS DWA TECHNOLOGY MNTM ETF	148	80	106	105	145
GREK	GLOBAL X MSCI GREECE ETF	149	288	111	124	336
FXR	FIRST TR INDL PROD DRBL ALPHADEX ETF	150	160	110	186	162
IYM	ISHARES US BASIC MATERIALS ETF	151	170	222	296	278
VAW	VANGUARD MATERIALS ETF	151	173	193	346	259
VUG	VANGUARD GROWTH ETF	153	139	114	114	123
ACWX	ISHARES MSCI ACWI EX US ETF	154	298	277	171	290
TLTD	FLEXSH MRNGST DEV MKT EX US FCTR ETF	155	306	273	166	290
VXUS	VANGUARD TOTAL INTERNATIONAL STK ETF	155	310	295	191	344
FMAT	FIDELITY MSCI MATERIALS INDX ETF	157	169	202	337	262
FBT	FIRST TRUST NYSE ARCA BIOTECH ID ETF	158	240	156	197	152
TAN	GUGGENHEIM SOLAR ETF	158	131	140	139	138
IYG	ISHARES US FINANCIAL SER ETF	160	226	182	285	183
INP	BARCLAYS BANK IPATH MSCI INDIA ETN	161	184	292	119	231
SBIO	ALPS MEDICAL BREAKTHROUGHS ETF	162	137	113	145	116
FXZ	FIRST TRUST MATERIALS ALPHADEX ETF	163	193	165	399	335
VEU	VANGUARD FTSE ALL WORLD EX US ETF	164	304	303	204	339
VNM	VANECK VECTORS VIETNAM ETF	164	142	263	152	164
NORW	GLOBAL X MSCI NORWAY ETF	166	276	292	248	456
MOO	VANECK VECTORS AGRIBUSINESS ETF	167	201	310	226	366
SCHF	SCHWAB INTERNATIONAL EQUITY ETF	167	385	319	144	202
ACWI	ISHARES MSCI ACWI ETF	169	216	189	163	184
EIRL	ISHARES MSCI CAP INVEST MKT IDX ETF	170	231	223	161	168
EDEN	ISHARES MSCI DEN CAP INV INDX ETF	171	157	191	191	129
XLI	SELECT SECTOR INDUSTRIAL SPDR ETF	172	161	118	230	160

## The Lyons Share

LMLP	UBS ETRACS MTLY PAY 2XLEVERAGED ETN	173	282	321	523	197
EWI	ISHARES MSCI ITALY CAPPED ETF	174	495	338	181	107
XTN	SPDR S&P TRANSPORTATION ETF	175	146	137	244	256
CWI	SPDR MSCI ACWI EX-US ETF	176	322	320	252	297
FV	FIRST DORSEY WRIGHT FOCUS 5 ETF	176	247	230	266	213
HEWJ	ISHARES CURRENCY HEDGED MSCI JAP ETF	178	336	237	271	193
VEA	VANGUARD FTSE DEVELOPED MARKETS ETF	179	343	306	207	311
RYF	GUGGENHEIM S&P 500 EQUAL WEI FIN ETF	180	251	183	324	195
PIZ	POWERSHARES DWA DEV MKTS MOM ETF	181	260	232	133	161
TLTE	FLEXSH MNGST EMR MKT FCTR TL IDX ETF	181	146	322	217	446
SCHE	SCHWAB EMERGING MARKETS EQUITY ETF	183	155	282	147	333
DBEM	DEUTH X TRK MSCI EMG MRK HDG EQY ETF	184	151	267	146	259
DVP	DEEP VALUE ETF	185	78	60	117	96
PBW	POWERSHARES WILDER CLEAN ENERGY ETF	185	132	124	139	131
VT	VANGUARD TOTAL WORLD STOCK ETF	187	242	229	195	251
HEEM	ISHARES CURRENCY HEDG MSCI EMERG ETF	188	182	171	126	272
BIB	PROSHARES ULTRA NASDAQ BIOTECH ETF	189	214	154	212	287
IEFA	ISHARES CORE MSCI EAFE ETF	189	360	332	183	267
IFV	FST TRT DSY WRGHT INTRNL FOCS 5 ETF	191	314	322	230	344
CFO	VICTORY CEMP US 500 ENHNCD VLTTY ETF	192	164	148	229	148
VGK	VANGUARD FTSE EUROPE ETF	193	394	350	227	275
IXG	ISHARES GLOBAL FINANCIALS ETF	194	290	310	297	224
PXF	PWRSHS FTSE RAFI DVPD MKT EX US ETF	194	405	338	263	344
FIDU	FIDELITY MSCI INDUSTRIALS INDX ETF	196	187	147	303	193
CFA	VICTORY CEMP US 500 VOLATILITY ETF	197	173	148	228	145
FXI	ISHARES CHINA LARGE CAP ETF	197	114	204	128	178
IWO	ISHARES RUSSELL 2000 GROWTH ETF	197	144	145	251	154
PICK	ISHARES MSCI GLL MET MIN PROD ETF	197	190	268	359	415
PHO	POWERSHARES WATER RESC PORTFOLIO ETF	201	159	135	240	102
DGS	WSDMTREE EMRG MKTS SMALLCAP DVD ETF	202	177	324	278	457
ENOR	ISHARES MSCI NORWAY CAP MKET ETF	203	275	417	348	522
CSD	GUGGENHEIM S&P SPIN OFF ETF	204	177	140	288	254
XHB	SPDR S&P HOMEBUILDERS ETF	204	125	116	256	119
PBD	POWERSHARES GLOBAL CLEAN ENERGY ETF	206	205	250	194	341
PKB	POWERSHARES DYNAMIC BLDG CONSTRN ETF	206	172	162	285	143
GURU	GLOBAL X GURU INDEX ETF	208	165	131	184	239
PDP	POWERSHARES DWA MOMENTUM ETF	209	210	223	268	169
RGI	GUGGENHEIM S&P 500 EQUAL WEIGHT ETF	210	202	152	299	208
PIN	POWERSHARES INDIA PORTFOLIO ETF	211	240	356	178	348
RZG	GUGGENHEIM S&P SMALLCAP 600 GR ETF	211	153	285	325	175
XRLV	PWRSHAR S&P 500 EX RAT SEN LW VL ETF	211	168	174	219	139
IPAC	ISHARES CORE MSCI PACIFIC ETF	214	305	313	209	316
VVO	VANGUARD FTSE EMERGING MARKETS ETF	215	165	346	264	451
QVAL	VALUESHARES U S QUANTITATIVE VAL ETF	216	127	117	199	139
EFNL	ISHARES MSCI FINLAND CAP INDEX ETF	217	432	335	307	377
EPI	WISDOMTREE INDIA EARNINGS ETF	217	254	356	154	279
HAO	GUGGENHEIM CHINA SMALL CAP ETF	217	145	119	169	207
HOML	UBS AG ETCS MON 2XD ISE HLDS ETN	220	183	187	185	163
FM	ISHARES MSCI FRONTIER 100 ETF	221	118	184	98	92
LABU	DIREXION DALY S&P BIOTCH BULL 3X ETF	221	186	190	190	166
XLF	SELECT STR FINANCIAL SELECT SPDR ETF	221	294	245	336	226
AFTY	CSOP FTSE CHINA A50 ETF	224	121	166	203	77
URTH	ISHARES MSCI WORLD ETF	225	258	237	196	229
EUFN	ISHARES MSCI EUROPE FINANCIALS ETF	226	412	425	304	186
ASHR	DET X TRK HRVTV CSI 300 CHN CL A ETF	227	103	176	142	153
MGC	VANGUARD MEGA CAP ETF	228	193	164	193	179
EFG	ISHARES MSCI EAFE GROWTH ETF	229	301	266	156	239
VIS	VANGUARD INDUSTRIALS ETF	229	207	154	333	230
EEMS	ISHARES MSCI EMER SMALL CAP ETF	231	246	391	253	370
IHI	ISHARES US MEDICAL DEVICES ETF	231	185	272	209	128
IOO	ISHARES GLOBAL 100 ETF	233	326	232	135	192
DSI	ISHARES MSCI KLD 400 SOCIAL INDX ETF	234	202	220	259	244



## The Lyons Share

IEUR	ISHARES CORE MSCI EUROPE ETF	234	408	388	216	248
NGE	GLOBAL X MSCI NIGERIA ETF	236	138	146	141	126
BRF	VANECK VECTRS BRAZIL SML CAP ETF	237	152	176	164	185
PGAL	GLOBAL X FTSE PORTUGAL 20 ETF	238	403	108	111	135
RFG	GUGGENHEIM S&P MIDCAP 400 PURE ETF	239	243	249	293	158
FEZ	SPDR EURO STOXX 50 ETF	240	569	490	276	201
XLG	GUGGENHEIM SP 500 TOP 50 ETF	240	213	206	171	186
DBJP	DEUTSCH X TRK MSCI JPN HDG EQY ETF	242	374	344	339	275
PEK	VANECK VCTR CHINAAMC CSI 300 ETF	242	126	188	151	157
DXJ	WISDOMTREE JAPAN HEDGED EQUITY ETF	244	388	352	392	304
FIW	FIRST TRUST ISE WATER INDEX ETF	245	123	121	254	115
EWX	SPDR S&P EMERGING MRKT SML CP ETF	246	264	370	302	374
DGRO	ISHARES CORE DIVIDEND GROWTH ETF	247	196	168	237	177
LRGF	ISHARES EDGE MSCI MLTFCR USA ETF	248	190	203	248	442
IHF	ISHARES US HEALTHCARE PRO ETF	249	179	148	320	109
ULE	PROSHARES ULTRA EURO ETF	250	181	225	288	212
VFH	VANGUARD FINANCIALS ETF	251	330	274	425	250
VV	VANGUARD LARGE CAP ETF	251	214	196	225	196
EFA	ISHARES MSCI EAFE ETF	253	417	382	258	331
XHE	SPDR S&P HEALTH CARE EQUIPMENT ETF	254	146	197	211	47
SCHX	SCHWAB US LARGE CAP ETF	255	217	198	239	198
FNCL	FIDELITY MSCI FINANCIALS INDX ETF	256	335	279	421	261
EZA	ISHARES MSCI SOUTH AFRICA ETF	257	155	312	503	695
BFOR	BARRONS 400 ETF	258	202	172	292	190
VOO	VANGUARD S&P 500 ETF	259	218	169	233	210
IVV	ISHARES CORE S&P 500 ETF	260	221	201	232	210
CRBN	ISHARES MSCI ACWI LW CRBN TGT ETF	261	323	299	215	305
VBK	VANGUARD SMALL CAP GROWTH ETF	262	211	173	301	181
IWB	ISHARES RUSSELL 1000 ETF	263	226	212	254	219
MOAT	VANECK VCTR MORNGSTR WD MOAT ETF	264	187	180	224	214
VOT	VANGUARD MID CAP GROWTH ETF	265	220	239	308	200
VONE	VANGUARD RUSSELL 1000 ETF	266	236	217	270	222
SPY	SPDR S&P 500 ETF	267	233	214	248	226
SCHB	SCHWAB US BROAD MARKET ETF	268	236	211	269	223
FRN	GUGGENHEIM FRONTIER MARKETS ETF	269	88	133	64	72
RXI	ISHARES GLOBAL CONSUMER DISCRE ETF	269	296	305	243	236
DIVC	CITIGRP C TRKS MLR HWD STRA DIV ETN	271	266	261	298	247
PEZ	PWRSHRS DWA CONSMR CYCLS MNTM ETF	271	223	239	329	182
IYY	ISHARES DOW JONES US ETF	273	245	210	265	245
QQEW	FIRST TR NAS 100 EQL WEGHTD INDX ETF	273	207	184	246	263
IWV	ISHARES RUSSELL 3000 ETF	275	234	217	273	226
ITOT	ISHARES TOTAL US STOCK MARKET ETF	276	231	207	279	215
VTI	VANGUARD TOTAL STOCK MARKET ETF	277	229	221	275	242
IEV	ISHARES EUROPE ETF	278	447	401	267	308
QUAL	ISHARS EDG MSCI USA QLTY FCTR ETF	279	219	175	259	253
OEF	ISHARES S&P 100 ETF	280	251	239	238	254
INDA	ISHARES MSCI INDIA INDEX ETF	281	294	418	159	327
XSD	SPDR S&P SEMICONDUCTOR ETF	282	84	125	149	164
EWK	ISHARES MSCI BELGIUM CAPPED ETF	283	487	484	334	334
INDY	ISHARES INDIA 50 ETF	284	270	394	137	310
FNDE	SCHWAB FUNDA EMG MKTS LARGE COM ETF	285	307	414	245	545
QQQE	DIREXION NASDAQ 100 EQL WGHT IDX ETF	286	209	191	233	251
TOK	iShares MSCI Kokusai ETF	286	356	285	218	208
SCHD	SCHWAB US DIVIDEND EQUITY ETF	288	197	231	256	295
IVOG	VANGUARD S&P MID CAP 400 GROWTH ETF	289	271	248	313	174
EPU	ISHARES MSCI ALL PERU CAPPED ETF	290	198	208	367	188
IJK	ISHARES S&P MID CAP 400 GRWTH ETF	291	278	253	357	216
DWM	WISDOMTREE INTERNATIONAL EQY ETF	292	422	373	328	388
PKW	POWERSHARES BUYBACK ACHIEVERS ETF	293	258	200	316	299
IYT	ISHARES TRANSPORTATION AVERAGE ETF	294	280	212	316	358
IDOG	ALPS INTL SECTOR DIVIDEND DOGS ETF	295	454	346	315	396
JJC	BRCLYS BK IPATH BLOOM COPPER SUB ETN	296	170	261	305	444

## The Lyons Share

EWP	ISHARES MSCI SPAIN CAPPED ETF	297	659	550	351	220
IYF	ISHARES US FINANCIALS ETF	298	340	275	342	264
ALFA	ALPHAFLONE ALTERNATIVE ALPHA ETF	299	424	235	435	350
GNR	SPDR S&P GLOBAL NATURAL RESOURCS ETF	299	289	390	347	506
EWUS	ISHARES MSCI UK SMALL CAP ETF	301	257	327	202	317
JKD	ISHARES MORNINGSTAR LARGE CAP ETF	302	285	160	212	198
JPIN	JPMORGAN DVRSFD RTRN INTRNL EQT ETF	303	372	243	189	279
QEMM	SPDR MSCI EMRG MKT STRTGCFCTR ETF	303	200	314	241	419
DOL	WISDOMTREE INTL LARGECP DIVIDEND ETF	305	457	402	335	433
IQDY	FLEXSHS INTL QTY DIV DYN IND ETF	306	425	426	425	575
FTLS	FIRST TRUST LONG SHORT EQUITY ETF	307	255	270	293	288
HYXU	ISHARES INTRNTNL HI YLD BND ETF	308	238	298	290	237
QQQX	NUVEEN NASDAQ 100 DYNAMIC OVRWRT CF	309	221	151	344	318
RWL	OPPENHEIMER REV WGHTRD LRG CP ETF	310	261	228	308	281
SCHM	CHARLES SCHWAB US MC ETF	310	283	244	368	269
VLUE	ISHARES EDG MSCI USA VAL FCTR ETF	312	287	226	284	301
COPX	GLOBAL X COPPER MINERS ETF	313	292	441	530	572
EZM	WISDOMTREE MIDCAP EARNINGS ETF	313	300	277	444	286
EWS	ISHARES MSCI SINGAPORE ETF	315	373	408	167	266
DSLX	CS VELOCITYSHARES 3X INV SILVER ETN	316	592	526	306	243
VIG	VANGUARD DIVIDEND APPRECIATION ETF	316	234	284	331	267
DGRE	WSDMTR EMRNG MKT QLT DIV GWTH ETF	318	187	299	283	443
FXO	FIRST TRUST FINANCIALS ALPHADEX ETF	319	367	296	443	344
PIO	POWERSHARES GLOBAL WATER ETF	320	344	246	221	180
RDVY	FIRST TRST NASDAQ RSNQ DVD ACHVS ETF	321	332	204	378	233
KOL	VANECK VECTORS COAL ETF	322	281	303	280	292
VXF	VANGUARD EXTENDED MARKET ETF	323	299	268	391	307
EES	WISDOMTREE SMALLCAP EARNINGS ETF	324	285	288	457	274
MDYG	SPDR S&P 400 MID CAP GROWTH ETF	325	329	346	415	246
WBIF	WBI TACTICAL LCV ETF	326	274	257	339	355
IWC	ISHARES MICRO CAP ETF	327	273	257	342	289
FEU	SPDR STOXX EUROPE 50 ETF	328	507	424	310	384
EMFM	GLOBAL X NEXT EMERGING FRONTIER ETF	329	248	242	219	353
SCIU	GLOBAL X SCIENTIFIC BETA US ETF	329	523	497	520	461
IFEU	ISHARES EUROPE DEVELOPED REL EST ETF	331	262	215	187	220
FDIS	FIDELITY MSCI CONS DISCR INDX ETF	332	224	290	321	204
GWX	SPDR S&P INTERNATIONAL SMALL CAP ETF	333	377	423	369	224
PXH	POWERSHARES FTSE RAFI EMER MKTS ETF	334	266	473	382	628
EUSC	WISDOMTREE EUR HDGD SMLCP EQT ETF	335	526	437	272	237
VUSE	VIDENT CORE US EQUITY ETF	335	302	265	374	306
VCR	VANGUARD CONSUMER DISCRETIONARY ETF	337	238	301	344	232
SPHB	POWERSHARES S&P 500 HIGH BETA ETF	338	358	260	378	402
SPPP	SPROTT PHYSICAL PLATINUM PAL CF	338	180	393	168	423
SPHQ	POWERSHARES S P 500 QUALITY ETF	340	296	281	323	312
JIN	BARCLAYS BK IPATH BLOOM NICKEL ETN	341	333	450	385	748
ADRD	BLDRS DEVELOPED MARKETS 100 ADR ETF	342	463	442	327	447
PBE	POWERSHARES BIOTECHNOLOGY GENOME ETF	342	365	331	373	534
SYLD	CAMBRIA SHAREHOLDER YIELD ETF	344	346	280	433	381
DEF	GUGGENHEIM DEFENSIVE EQUITY ETF	345	293	217	222	171
FXD	FIRST TR CONS DSCRTNRY ALPHADEX ETF	346	279	254	439	265
IQDF	FLEXSHARES INTL QTY DIV INDEX ETF	346	436	447	422	559
FXH	FIRST TRUST HEALTH CARE ALPHADEX ETF	348	339	337	418	301
EFV	ISHARES MSCI EAFE VALUE ETF	349	531	488	388	422
PYZ	PWRSHRS DWA BSC MTRLS MNTM ETF	350	325	329	543	440
AIRR	FT RBA AMERICAN IND RENAISSANCE ETF	351	312	317	470	283
TILT	FLEXSHARES MORNINGSTAR US IDX ETF	352	316	302	375	353
FHK	FIRST TRUST HONG KONG ALPHADEX ETF	353	206	194	108	122
RSP	GUGGENHEIM S&P 500 EQUAL WEIGHT ETF	353	308	290	377	322
JETS	US GLOBAL JETS ETF	355	389	158	235	428
WBIL	WBI TACTICAL LCS ETF	355	347	363	361	359
VO	VANGUARD MID CAP ETF	357	318	317	394	338
GAL	SPDR SSGA GLOBAL ALLOCATION ETF	358	378	379	331	402

## The Lyons Share

VTWO	VANGUARD RUSSELL 2000 ETF	359	321	334	467	331
AFK	VANECK VECTORS AFRICA INDEX ETF	360	128	340	197	416
BBRC	COLUMBIA BEYOND BRICS ETF	360	251	396	291	351
CGW	GUGGENHEIM S&P GLOBAL WATER IDX ETF	360	313	166	206	141
EWL	ISHARES MSCI SWITZERLAND CAP ETF	360	512	412	352	439
RYH	GUGGENHEIM S&P 500 EQUAL WEIG HC ETF	364	263	316	356	297
IWR	ISHARES RUSSELL MID CAP ETF	365	333	309	402	325
IWM	ISHARES RUSSELL 2000 ETF	366	327	336	461	341
DBB	POWERSHARES DB BASE METALS ETF	367	157	342	235	314
NOBL	PROSHARES S&P 500 DIV ARISTOCRAT ETF	368	250	255	329	308
BBC	BIOSHARES BIOTCHNLGY CLNCL TRALS ETF	369	318	315	295	270
FHLC	FIDELITY MSCI HEALTH CARE INDX ETF	370	338	256	360	323
VHT	VANGUARD HEALTH CARE ETF	371	341	276	366	320
IYH	ISHARES US HEALTHCARE ETF	372	351	285	362	349
PRFZ	PWRSHS FTSE RAFI US 1500 SML MID ETF	373	320	333	445	330
XLY	SPDR FUND CONSUMER DISCRE SELECT ETF	374	276	373	365	285
DTH	WISDOMTREE INTERNATIONAL HGH DIV ETF	375	518	445	418	502
FNDX	SCHWAB FUNDAMENTAL US LARGE CO ETF	376	362	355	390	380
IJR	ISHARES CORE S&P SMALL CAP ETF	376	316	372	515	343
EWT	ISHARES MSCI TAIWAN ETF	378	457	541	200	544
SCHA	SCHWAB US SMALL CAP ETF	378	357	341	469	364
VIOO	VANGUARD S&P SMALL CAP 600 ETF	378	315	358	490	296
VB	VANGUARD SMALL CAP ETF	381	362	349	465	357
DLN	WISDOMTREE LARGE CAP DIVIDEND ETF	382	348	307	341	356
FKU	FIRST TRUST UK ALPHADEX ETF	382	420	487	383	472
GWL	SPDR S&P WORLD EX US ETF	384	192	181	162	150
PTNQ	PACER TRENDPILOT 100 ETF	385	353	345	319	319
DEM	WISDOMTREE EMRG MRKT HG DIV ETF	386	350	470	464	645
FDD	FIRST TRST STOXX EUR SEL DVD INC ETF	387	514	420	383	386
MGV	VANGUARD MEGA CAP VALUE ETF	388	395	389	440	409
JKG	ISHARES MORNINGSTAR MID CAP ETF	389	328	296	403	340
VTV	VANGUARD VALUE ETF	390	379	368	429	391
FNDB	SCHWAB FUNDAMENTAL US BROAD MKT ETF	391	370	377	405	393
KLDW	GAVEKAL KNWLDG LEADR DVLP WRLD ETF	392	386	397	354	373
RPV	GUGGENHEIM S&P 500 PURE VALUE ETF	393	397	343	494	430
AOA	ISHARES CORE AGGRESSIVE ALLOCATI ETF	394	486	292	277	303
DXJR	WISDOMTREE JAPAN HEDGED RL EST ETF	395	482	514	416	378
IJH	ISHARES CORE S&P MID CAP ETF	396	383	359	492	361
DRW	WISDOMTREE GLOBAL EX-US REAL EST ETF	397	256	208	180	271
IVOO	VANGUARD S&P MID CAP 400 ETF	398	390	365	482	352
PRF	POWERSHARE FTSE RAFI US 1000 POR ETF	399	382	378	401	395
EEMV	ISHR EDG MSCI MIN VOL EMG MKT ETF	400	331	366	287	404
EFAD	PROSHARES MSCI EAFE DVD GRWRS ETF	401	428	362	322	367
IHDG	WISDOMTREE INTER HDG QLY DIV GRT ETF	402	474	428	261	363
EWD	ISHARES MSCI SWEDEN ETF	403	612	566	486	525
SLX	VANECK VECTORS STEEL ETF	404	399	501	704	622
DTD	WISDOMTREE TOTAL DIVIDEND ETF	405	362	328	371	378
MLPN	CREDIT SUS X LKS CHG MLP INFR ETN	406	264	247	242	206
MDY	SPDR S&P MIDCAP 400 ETF	407	395	373	501	371
UBR	PROSHARES ULTRA MSCI BRZ CPD ETF	407	423	581	611	751
EQAL	POWERSHARES RSSLL 1000 EQL WT ETF	409	361	364	431	394
IAT	ISHARES US REGIONAL BANKS ETF	410	597	548	669	507
XLV	SELECT SECTOR HEALTH CARE SPDR ETF	410	368	330	381	382
PID	POWERSHARES INTL DVDND ACHVRS ETF	412	397	413	455	602
RUSL	DIREXION DAILY RSSIA BULL 3X SHS ETF	413	438	727	507	574
DOO	WISDOM TREE INTERNA DVD EX FINAN ETF	414	563	461	429	501
IBB	ISHARES NASDAQ BIOTECHNOLOGY ETF	414	431	360	452	495
PFM	POWERSHARES DIVIDEND ACHIEVERS ETF	414	324	387	348	374
VNQI	VANGUARD GLBAL EX US REAL ESTATE ETF	417	375	383	273	328
CSQ	CALAMOS STRATEGIC TOTAL RETURN CF	418	619	405	508	361
RFV	GUGGENHEIM S&P MIDCAP 400 PUE VA ETF	419	425	354	552	466
SCHV	SCHWAB US LARGE CAP VALUE ETF	419	402	399	449	420



## The Lyons Share

KBE	SPDR S&P BANK ETF	421	555	492	663	484
XME	SPDR S&P METALS & MINING ETF	422	365	432	685	623
TDIV	FIRST TR NASDAQ TECH DIV IDX ETF	423	440	430	399	450
HAP	VANECK VECTORS NATURAL RESRCS ETF	424	421	482	395	526
PWV	POWERSHARES DYNAMIC LARGE CAP ETF	425	441	395	396	383
RTH	VANECK VECTORS RETAIL ETF	425	310	351	299	277
QDEF	FLEXSHARES DEF QUAL DIV ETF	427	391	368	387	398
QDF	FLEXSHARES QUAL DIV ETF	427	381	367	404	412
JPN	DUTSCH X TRCK JAP JPX NIK 400 EQ ETF	429	443	473	436	424
RWK	OPPNHMR REVN WGHTE MD CP ETF	429	449	381	569	447
EWI	ISHARES MSCI HONG KONG ETF	431	337	404	179	283
IJS	ISHARES S&P SMALL CAP 600 ETF	432	393	405	575	400
EUMV	ISHARES EDGE MSCI MIN VOL EUR ETF	433	489	438	310	387
ECON	COLUMBIA EMERNG MKTS CONSMR ETF	434	284	391	388	524
DBAW	DEUT X TRK MSCI AL WLD EX US HDG ETF	435	604	495	350	405
VYM	VANGUARD HIGH DIVIDEND YIELD ETF	436	401	415	448	444
IQDE	FLEXSHS INTL QTY DIV DEF INDX ETF	437	515	499	434	528
PSP	POWRSHS GLBL LISTED PRIVATE EQTY ETF	438	656	644	616	646
DXJF	WISDOMTREE JAPAN HEDGED FNCLS ETF	439	630	650	705	629
QQXT	FIRST TST NASDAQ 100 EX TE SC ID ETF	440	391	416	441	426
VOE	VANGUARD MID CAP VALUE ETF	441	411	380	490	431
IDV	ISHARES INTERNATIONAL SEL DIV ETF	442	598	475	538	579
FNDA	SCHWAB FUNDAMENTAL US SMALL COM ETF	443	416	422	528	416
IYC	ISHARES US CONSUMER SERVICES ETF	444	384	400	427	368
EELV	POWERSHARES S&P EMERGING MARKETS ETF	445	406	508	428	550
TMF	DIR DAILY 20+ YEAR TRSRY BULL 3X ETF	445	419	227	188	273
VOOV	VANGUARD S&P 500 VALUE ETF	447	445	452	489	471
CVY	GUGGENHEIM MULTI ASSET INCOME ETF	448	433	429	515	481
EZY	WISDOMTREE LARGE CAP VALUE ETF	449	269	263	214	205
TTFS	ADVISORSHARES WILSHIRE BUYBACK ETF	449	464	434	497	441
IVE	ISHARES S&P 500 VALUE ETF	451	450	449	505	467
KRE	SPDR S&P REGIONAL BANKING ETF	452	629	561	749	531
IAK	ISHARES US INSURANCE ETF	453	464	466	517	397
SLY	SPDR S&P 600 SMALL CAP ETF	454	410	436	578	390
GUNR	FLEXSHARES UPSTREAM NATURAL IDX ETF	455	399	494	472	598
IXJ	ISHARES GLOBAL HEALTHCARE ETF	455	459	403	420	434
IBND	SPDR BLMBRG BARCLY INTL CRP ETF	457	387	421	407	406
FGD	FST TST DOW JNS GLBL SEL DVD IDX ETF	458	519	470	525	561
DEW	WISDOMTREE GLOBAL HIGH DIVI ETF	459	466	469	471	538
WBIE	WBI TACTICAL LCG ETF	460	442	440	495	437
HEFA	ISHARES CURRENCY HEDG MSCI EAFE ETF	461	648	509	423	438
XT	ISHARES EXPONENTIAL TECHNOLOGIES ETF	462	354	353	325	313
CDC	VICTORY CEMP US EQ INCM EHNCD ETF	463	434	418	450	388
CNXT	VANCK VCTR CHINAAMC SME CHINEXT ETF	464	268	431	281	294
EDIV	SPDR S&P EMERGING MARKETS DIVID ETF	465	358	553	540	724
KLD	ISHARES MSCI USA ESG SELECT ETF	466	291	289	247	258
AOR	ISHARES CORE GROWTH ALLOCATION ETF	467	621	409	370	399
IDLV	POWERSHARES S&P INTERNATIONAL DE ETF	467	485	485	372	401
VBR	VANGUARD SMALL CAP VALUE ETF	469	475	465	585	476
BNO	UNITED STATES BRENT OIL ETF	470	355	477	409	518
USMV	ISHARES EDGE MSCI MIN VOL USA ETF	471	407	435	416	385
EFAV	ISHARE EDGE MSCI MIN VOL EAFE ETF	472	467	444	354	411
THRK	SPDR RUSSELL 3000 ETF	473	369	373	312	321
RYJ	GUGGENHEIM RYMD JAMES SB-1 EQTY ETF	474	435	439	484	519
EWU	ISHARES MSCI UNITED KINGDOM ETF	475	510	512	414	527
SLYG	SPDR S&P 600 SMALL CAP GROWTH ETF	475	430	506	604	325
EPP	ISHARES MSCI PACIFIC EX JAPAN ETF	477	483	537	462	649
IUSG	ISHARES CORE RUSSELL US GROWTH ETF	478	376	386	318	329
DOD	ELEM DGS DW LKD DJ HGH SLCT 10 ETN	479	479	544	599	689
HACK	ETF MANG PUREFUNDS ISE CYBER SEC ETF	479	546	432	527	421
JKF	ISHARES MRNSTAR LARGE CAP VAL ETF	481	497	498	530	513
HEWI	ISHARES CURRENCY HDGD MSCI ITLY ETF	482	625	560	380	323

## The Lyons Share

HEWG	ISHARES CURRENCY HEDGED MSCI GER ETF	483	404	405	363	365
DBEF	DEUTSCH X TRKS MSCI EAFE HDG EQY ETF	484	652	555	453	463
EWC	ISHARES MSCI CANADA ETF	485	462	427	477	540
DON	WISDOMTREE MIDCAP DIVIDEND ETF	486	444	410	544	464
DWX	SPDR S&P INTERNATIONAL DIVIDEND ETF	487	536	515	519	551
FXE	GUGGENHEIM CURRENCYSHARES EURO ETF	487	413	479	488	458
WPS	ISHARES INTERNATIONAL DEV PRTY ETF	489	489	472	353	462
GUR	SPDR S&P EMERGING EUROPE ETF	490	371	360	338	315
WDIV	SPDR S&P GLOBAL DIVIDEND ETF	491	470	513	528	523
IWD	ISHARES RUSSELL 1000 VALUE ETF	492	492	491	536	499
VONV	VANGUARD RUSSELL 1000 VALUE ETF	493	498	489	547	497
LVL	GUGGENHEIM S&P GLBL DVD OPPS IDX ETF	494	476	454	476	535
PTLC	PACER TRENDPILOT 750 ETF	495	477	451	463	449
IVOV	VANGUARD S&P MID CAP 400 VALUE ETF	496	499	457	574	453
PHDG	POWERSHS SP 500 DWNSDE HEDGED ETF	496	494	455	437	454
IJT	ISHARES S&P SMLL CAP 600 GRTH ETF	498	454	464	442	425
IWX	ISHARES RUSSELL TOP 200 VALUE ETF	499	493	495	532	510
IJJ	ISHARES S&P MID CAP 400 VALUE ETF	500	505	468	615	499
KIE	SPDR S&P INSURANCE ETF	501	532	540	636	460
PSCT	POWERSHARES S&P SMALL TECH PORT ETF	501	349	530	627	493
EPHE	ISHARES MSCI PHILIPPINES ETF	503	502	447	397	521
HFXI	IQ 50 PERCENT HEDGED FTSE INTER ETF	504	520	529	459	489
OEUR	O SHARES FTSE EUROPE QULTY DIVI ETF	505	555	533	411	469
IPFF	ISHARES INTERNATIONAL PRF ETF	506	468	516	510	565
DXGE	WISDOMTREE GERMANY HEDGED ETF	507	718	582	386	465
ILF	ISHARES LATIN AMERICA 40 ETF	508	452	545	535	639
XSLV	POWERSHARES S&P SMALLCAP LOW VOL ETF	509	448	463	553	371
DBEZ	DEUTSCH X TRCKR MSCI EUR HDG EQY ETF	510	741	606	413	435
SPLV	POWERSHARES S&P 500 LOW VOLAT ETF	511	460	460	454	391
IWS	ISHARES RUSSELL MID CAP VALUE ETF	512	483	475	562	505
HEZU	ISHARES CRRNCY HDG MSCI EURZN ETF	513	756	610	447	429
GII	SPDR S&P GLOBAL INFRASTRUCTURE ETF	514	637	503	406	408
IDX	VANECK VECTR INDONESIA INDEX ETF	515	508	554	358	479
IWN	ISHARES RUSSELL 2000 VALUE ETF	516	524	536	642	515
XMLV	POWERSHARES S&P MIDCAP LOW VOL ETF	516	488	505	496	360
CWB	SPDR BLMBERG BRCLY CONV SECRT ETF	518	547	551	481	530
ACWV	ISHARES EDGE MSCI MIN VOL GLBL ETF	519	470	502	457	427
PICB	POWERSHARES INTL CORPORATE BOND ETF	520	451	507	468	480
EIDO	ISHARES MSCI INDONESIA ETF	521	473	522	393	478
MDYV	SPDR S&P 400 MID CAP VALUE ETF	522	534	511	644	511
WBI	WBI TACTICAL SMG ETF	523	538	558	655	555
PSCF	POWERSHARES S&P SMALL FINAN PORT ETF	524	555	571	746	536
DTN	WISDOM TREE DIVIDEND EX FINAN ETF	525	480	466	537	541
SDY	SPDR S&P DIVIDEND ETF	526	478	521	632	431
SLV	SPDR S&P 600 SMALL CAP VALUE ETF	527	503	538	688	413
QABA	FIRST TST NASDAQ ABA COM BK ID ETF	528	708	625	916	587
BRZU	DIREXION BRAZIL BULL 3X SHARES ETF	529	566	726	702	877
PTMC	PACER TRENDPILOT 450 ETF	530	513	493	548	488
DGRS	WISDMTRE US SMLCP QLT DIV GRW ETF	531	499	519	738	512
DBGR	DEUTSH X TRKS MSCI GRMNY HDG EQY ETF	532	751	611	398	477
FVD	FIRST TRUST VALUE DIVIDEND INDEX ETF	533	529	532	559	484
IUSV	ISHARES CORE RUSSELL US VALUE ETF	534	489	503	474	459
DES	WISDOMTREE SMALLCAP DIVIDEND ETF	535	496	486	707	529
DBEU	DEUTSCH X TRKS MSCI ERP HDG EQY ETF	536	747	589	475	520
RCD	GUGGENHEIM S&P 500 EQUAL WEI CON ETF	536	469	480	594	475
UGA	UNITED STATES GASOLINE ETF	538	418	456	456	533
RETL	DIREXION DAIL RETAIL BULL 3X SHS ETF	539	570	547	941	542
FXEU	PWRSHARS EUR CRNCY HD LW VLTLTY ETF	540	439	442	411	414
DVYE	ISHARES EMERGING MARKETS DIV ETF	541	576	668	554	702
ICLN	ISHARES GLOBAL CLEAN ENERGY ETF	542	590	603	613	656
IGN	ISHARES NORTH AMERICAN TECH ETF	543	539	548	586	492
EWZ	ISHARES MSCI BRAZIL CAPPED ETF	544	499	601	559	693

## The Lyons Share

CHY	CALAMOS CONVERTIBLE AND HIGH INC CF	545	675	618	652	495
PJP	POWERSHARES DYNAMIC PHARMACALS ETF	546	460	398	451	543
NFRA	FLEXSHAR STX GLOBAL BROAD INF ETF	547	582	523	487	490
SVVC	FIRSTHAND TECHNOLOGY VALUE CF	548	408	500	500	580
EWIM	ISHARES MSCI MALAYSIA ETF	549	528	616	431	504
EGPT	VANECK VECTORS EGYPT INDEX ETF	550	524	445	423	416
IGOV	ISHARES INTERNATIONAL TRSRY BND ETF	551	503	526	514	515
IFGL	ISHARES INTERNATIONAL DEV RL EST ETF	552	561	542	473	502
PSCC	POWERSHARES S&P CONS STAP PORT ETF	552	446	556	641	468
WBIB	WBI TACTICAL SMV ETF	554	579	579	711	591
XHS	SPDR S&P HEALTH CARE SERVICES ETF	554	506	458	656	486
PSL	PWRSHRS DWA CNSMR STPLS MNTM ETF	556	429	383	460	369
AOM	ISHARES CORE MODERATE ALLOCATIN ETF	557	677	520	483	508
UBT	PROSHARES ULTRA 20+ YR TREASURY ETF	558	550	370	314	474
KNOW	DIREXION ALL CAP INSIDER SENTI ETF	559	559	574	744	409
CCD	CALAMOS DYNAMIC CONVERTIBLE CF	560	656	539	634	513
KCNY	KRANESHARES E CHN CMRCL PPR ETF	561	533	570	517	537
LEMB	ISHARES EMERG MRTS LOCAL CUR ETF	562	530	565	571	571
WBID	WBI TACTICAL SMS ETF	563	585	572	699	572
GQRE	FLEXSHARES GLB QULY REAL EST IDX ETF	564	537	510	446	455
QYLD	RECON CAPITAL NAS 100 CVRD CAL ETF	565	610	543	498	585
SDOG	ALPS SECTOR DIVIDEND DOGS ETF	566	545	525	636	652
HDV	ISHARES CORE HIGH DIVIDEND ETF	567	526	546	541	547
FAN	FIRST TRUST GLOBAL WIND ENERGY ETF	568	639	621	583	653
RWJ	OPPENHEIMER REV WGHTE SMLLCP ETF	569	560	612	825	600
RLY	SPDR SSGA MULTI ASSET REAL RETUR ETF	570	539	563	554	679
CEW	WISDOMTREE EMERGING CUNCY STR ETF	571	547	567	562	609
PEJ	POWERSHARES DYNIC LEISURE & ENTE ETF	571	562	483	557	483
DVY	ISHARES SELECT DIVIDEND ETF	573	521	530	499	487
ERX	DIREXION DAILY ENERGY BULL 3X ETF	574	601	585	679	872
CEFL	UBS ETRACS MONTH PAY 2XLEV CEF ETF	575	670	651	676	508
QAI	IQ HEDGE MULTI-STRATEGY TRACKER ETF	576	599	587	566	588
COW	BACLYS BK IPATH BLOOM LIVESTOCK ETN	577	679	738	570	630
GRES	INDEXIQ GLOBAL RESOURCES ETF	577	414	535	573	605
UCO	PROSHARES ULTRA BLOOM CRUDE ETF	579	511	658	513	723
IHY	VANECK VECTORS INTL HG YLD BOND ETF	580	600	634	649	647
GXG	GLOBAL X MSCI COLOMBIA ETF	581	470	411	478	601
DHS	WISDOMTREE HIGH DIVIDEND ETF	582	543	517	550	556
EBND	SPDR BLMBRG BRCLY EMG MKT LCL ETF	583	549	584	575	558
HEDJ	WISDOMTREE EUROPE HEDGED EQTY ETF	583	794	712	546	553
BWZ	SPDR BLMBRG BARCLY SH TM INTL ETF	585	567	600	578	576
CIBR	FIRST TRUST NASDAQ CYBRSCRTY ETF	586	633	588	629	578
OUSA	O SHARES FTSE US QUALITY DIV ETF	587	553	557	532	551
DVYA	ISHARES ASIA/PACIFIC DIVIDEND ETF	588	620	597	658	822
FILL	ISHARES MSCI GLOBAL ENGY PROD ETF	588	632	580	522	640
BWX	SPDR BLMBRG BRCLY INTL TRSRY ETF	590	564	568	549	549
FXC	GUGGENHEIM CURR CANADIAN DOLLAR ETF	591	565	575	597	670
RWX	SPDR DOW JONES INTER REAL ESTATE ETF	592	605	577	589	582
CYB	WISDOMTREE CHINESE YUAN STRAY ETF	593	583	517	512	564
AOK	ISHARES CORE CONSERVATIVE ALLOC ETF	594	641	642	590	621
MNA	INDEXIQ MERGER ARBITRAGE ETF	594	541	674	722	633
IYK	ISHARES US CONSUMER GOODS ETF	596	481	524	539	557
WBIH	WBI TACTICAL HIGH INCOME ETF	597	639	609	620	714
FXB	GUGGE CUR BRITISH POUND STERLING ETF	598	555	604	554	569
ZROZ	PIMCO 25YR ZERO CUPN US TRS INDX ETF	599	612	458	410	532
DBE	POWERSHARES DB ENERGY ETF	600	453	591	479	643
PEY	POWERSHARES HIGH YIELD DIVIDEND ETF	601	606	595	726	585
EDV	VANGUARD EXTENDED DURATION ETF	602	618	480	437	546
EWA	ISHARES MSCI AUSTRALIA ETF	603	622	623	653	825
TWOK	SPDR RUSSELL 2000 ETF	604	589	583	561	548
KXI	ISHARES GLOBAL CONSUMER STAP ETF	605	577	561	501	554
COMT	ISHARES COMMODITIES SELCT STRTGY ETF	606	541	653	465	631

DBO	POWERSHARES DB OIL ETF	607	516	649	493	675
FUND	SPROTT FOCUS TRUST ORD	607	554	569	668	560
PSCU	POWERSHARES S&P SMALL UTILI PORT ETF	607	352	461	408	133
VCLT	VANGUARD LONG TERM COR BD ETF	610	583	576	526	566
CHI	CALAMOS CONVERTIBLE OPPO AND INCM CF	611	742	675	670	580
CUBA	HERZFELD CARIBBEAN BASIN CF	612	653	756	611	624
CLY	ISHARES 10+ YEAR CREDIT BOND ETF	613	586	577	534	568
GHYG	ISHARES GLOBAL HIGH CORP BOND ETF	614	709	760	733	619
PCEF	POWERSHARES CEF INC COMPOSITE PF ETF	614	699	645	673	681
UAE	ISHARES MSCI UAE CAPPED ETF	616	843	827	822	868
DSUM	POWERSHARES CHINESE YUAN DIM SUM ETF	617	592	590	581	583
RZV	GUGGENHEIM S&P SMALLCAP 600 PURE ETF	618	608	629	785	618
CDL	VICTORY CEMP US LG CAP HIGH DIV ETF	619	609	591	599	562
XRT	SPDR S&P RETAIL ETF	620	693	641	843	606
SPHD	PWRSHARS S P 500 GHG DIV LW VLTY ETF	621	623	572	602	597
HEWP	ISHARES CURNCY HDG MSCI SPAIN ETF	622	716	682	565	517
RSXJ	VANECK VECTOR RUSSIA SML CAP ETF	623	713	803	603	590
PBS	POWERSHARES DYNAMIC MEDIA ETF	624	588	643	827	655
FXA	GUGGENHEIM CURRENCY AUS DOLLAR ETF	625	633	671	799	870
FDL	FIRST TRUST MORNINGSTAR DIV LDRS ETF	626	660	652	716	668
SRET	GLOBAL X SUPERDIVIDEND REIT ETF	627	573	559	557	593
ANGL	VANECK VCTR FALN ANGL HY BND ETF	628	726	777	769	657
RSX	VANECK VECTORS RUSSIA ETF	629	650	825	596	659
IXC	ISHARES GLOBAL ENERGY ETF	630	703	698	650	728
WIP	SPDR CITI INTL GOV INFL PRTC BND ETF	631	611	593	580	607
EMLC	VANECK VCTR J P MORGN LCL BND ETF	632	624	656	700	704
GSP	BARCLAYS TRAD NTS GSCI TOT RET IDX	633	509	702	524	721
IYLD	ISHARES MORN MLTI ASS INC IND ETF	633	628	632	610	627
RDIV	OPPENHMR REV WGHTD ULTR DIV ETF	633	671	586	792	729
UGLD	CS VELOCITYSHARES 3X LONG GOLD ETN	636	415	633	601	675
SDIV	GLOBAL X SUPERDIVIDEND ETF	637	594	631	719	818
ILTB	ISHARES CORE 10 YEAR USD BOND ETF	638	635	602	568	611
BLV	VANGUARD LONG TERM BOND ETF	639	625	596	551	595
USCI	UNITED STATES COMMODITY INDEX ETF	640	614	719	651	752
LWC	SPDR BLMBRG BRCLY LNG TRM CRP ETF	641	616	599	583	570
URE	PROSHARES ULTRA REAL ESTATE ETF	642	544	385	376	452
DGP	DB GOLD DOUBLE LONG ETN	643	436	619	582	678
JXI	ISHARES GLOBAL UTILITIES ETF	644	727	612	480	436
SMLV	SPDR RUSSELL 2000 LOW VOLATILITY ETF	645	680	697	840	562
ELD	WISDOMTREE EMERGING MKRT LOCAL ETF	646	664	660	711	712
UCI	E TRACS UBS BLOOMBERG CMCI ETN	647	551	751	606	770
ASHS	DET X TRK HRVT CSI 500 CHN CL A ETF	648	595	793	571	694
GSG	ISHARES S&P GSCI COMMODITY INDXD ETF	649	591	717	545	730
IHE	ISHARES US PHARMACEUTICALS ETF	650	644	598	640	665
DBC	POWERSHARES DB CMMDTY IDX TRCKNG ETF	651	572	716	564	755
DXPS	WISDOMTREE UNITED KINGDOM HEG EQ ETF	652	799	722	754	873
XPH	SPDR S&P PHARMACEUTICALS ETF	653	571	551	575	591
IGHG	PROSHARES INVT GD INT RAT HED ETF	654	654	749	773	783
YYY	YIELDSHARES HIGH INCOME ETF	655	723	647	709	696
USL	UNITED STATES 12 MONTH OIL ETF	656	552	695	506	718
OIL	BARCLYS IPATH NOTES LKD GAS OIL INDX	657	517	701	504	714
MORL	UBS ETRACS 2XLEVERAGED REIT ETN	658	614	526	521	235
UGL	PROSHARES ULTRA GOLD ETF	659	456	656	639	713
HTUS	HULL TACTICAL US ETF	660	697	605	609	576
RHS	GUGGENHEIM S&P 500 EQUAL WE CONS ETF	661	587	593	607	617
VGLT	VANGUARD LONG TERM GOV BD ETF	661	665	607	566	608
RJN	AB SVSK ELM LKD RGRS IDX TTL RET ETN	663	522	707	511	706
BAB	POWERSHARES BUILD AMERICA ETF	664	669	622	591	603
ERUS	ISHARES MSCI RUSSIA CAPPED ETF	665	663	820	631	650
DIG	PROSHARES ULTRA OIL & GAS ETF	666	724	686	751	917
EMCB	WISDOMTREE EMERG MKTS CORP BOND ETF	667	763	664	756	657
ILB	PIMCO GLOBAL ADVANTAGE INFL ACTV ETF	667	661	648	635	615



EIS	ISHARES MSCI ISRAEL CAPPED ETF	669	568	779	795	777
FXG	FIRST TR CONSUMR STAPLS ALPHADEX ETF	670	573	624	697	613
FPE	FIRST TRUST PREFERRED SEC INCOME ETF	671	740	742	620	614
USO	UNITED STATES OIL ETF	672	535	728	509	718
LQD	ISHARES IBOXX INVNT GRADE BOND ETF	673	658	661	623	663
TLO	SPDR BLMBRG BRCLY LG TM TRSRY ETF	673	649	630	616	610
RVNU	DEUT X TRK MNCLP INFRSTRCTR RVNE ETF	675	638	608	624	589
IAU	ISHARES GOLD ETF	676	573	671	661	746
IXP	ISHARES GLOBAL TELECOM ETF	676	738	784	768	660
TUTT	TUTTLE MANAGEMENT U.S. CORE ETF	678	666	654	644	620
PXE	POWERSHARES DYNAMIC EXPLRTN PRDN ETF	679	725	658	680	684
SGOL	ETFS GOLD TRUST ETF	680	580	680	683	745
GLD	SPDR GOLD SHARES ETF	681	578	689	681	746
OUNZ	VANECK MERK GOLD ETF	682	580	677	671	743
WBIC	WBI TACTICAL SMY ETF	683	761	735	845	772
FBZ	FIRST TRUST BRAZIL ALPHADEX ETF	684	759	844	836	861
PWZ	POWERSH CALIFOR AMT FRE MUNI BND ETF	685	661	615	618	616
CORP	PIMCO INVEST GRADE CORP BND IDX ETF	686	684	669	654	651
AUNZ	WISDOMTREE AUSTRALIA NEW ZEALAND ETF	687	686	686	675	648
MLN	VANCK VCTR AMT FREE LNG MCPL ETF	688	650	635	625	638
FXF	GUGGENHEIM CURRENCY SWISS FRANC ETF	689	712	673	796	717
HYLD	PERITUS HIGH YIELD ETF	689	797	705	791	730
PCY	POWERSHARES EMRG MKTS SOVRGN DBT ETF	691	728	721	720	683
FSTA	FIDELITY MSCI CONS STPLS INDX ETF	692	627	627	647	685
QLTA	ISHARES AAA A RATED COR BOND ETF	693	689	700	672	692
LTPZ	PIMCO 15+ YEAR US TIPS INDEX ETF	694	667	733	587	671
TUR	ISHARES MSCI TURKEY ETF	695	631	616	595	584
DGL	POWERSHARES DB GOLD ETF	696	607	713	695	763
MORT	VANECK VCTR MRTGAG REIT INCM ETF	696	655	533	542	598
EWV	ISHARES MSCI MEXICO CAPPED ETF	698	705	693	633	494
DIV	GLOBAL X SUPERDIVIDEND US ETF	699	642	665	742	707
RWO	SPDR DOW JONE GLOBAL REAL ESTATE ETF	699	710	638	664	662
PHYS	SPROTT PHYSICAL GOLD ETY UNT	701	603	684	715	755
PHB	POWERSHARES FUNDAME H YIELD CORP ETF	702	822	817	816	771
FMB	FIRST TRUST MANAGED MUNICIPAL ETF	703	678	637	630	612
RJI	AB SVENSK ELEMENTS LKD RGR INDEX ETN	704	645	785	628	842
HYG	ISHARES IBOXX HIGH YIELD BOND ETF	705	821	847	856	803
XLP	SPDR FUND CONSUMER STAPLES ETF	706	647	626	636	687
IEO	ISHARES US OIL GAS EXL PROD ETF	707	711	691	752	775
XMPT	VANECK VECTORS CEF MNCPL INCM ETF	707	687	638	614	635
JNK	SPDR BLMBRG BRCLY HGH YLD BND ETF	709	820	854	864	809
VDC	VANGUARD CONSUMER STAPLES ETF	710	646	640	683	698
VVOB	VANGUARD EMERGING MKT GOVT BND ETF	711	745	753	747	742
VTEB	VANGUARD MUNI BND TAX EXEMPT ETF	712	704	699	688	665
AGGY	WSDMTR BRCLY US AGRGT BND ENHNC ETF	713	720	704	687	674
PZA	POWERSHARE NATL AMT FRE MUNI BND ETF	714	700	636	661	654
HYD	VANECK VECTR HG YLD MCPL INDX ETF	715	714	646	648	642
EMHY	ISHARES EMERGING MARKETS HIGH ETF	716	743	820	784	811
GGOV	PROSHARES GERMAN SUB SOVEREIGN ETF	717	681	667	657	643
ITM	VANCK VCTR AMT FR INTMDT MCPL ETF	718	682	655	666	634
ITR	SPDR BLMBRG BRCLY INTRMDT TRM ETF	718	720	722	701	673
GSC	GS S&P GSCI ENHA COMM RET STRA ETN	720	701	755	917	663
FXN	FIRST TRUST ENERGY ALPHADEX ETF	721	825	722	817	884
IGE	ISHARES NORTH AMER NATL RES ETF	722	772	764	806	891
FUTY	FIDELITY MSCI UTILITIES INDX ETF	723	688	690	592	470
IPW	SPDR SP INTERNA ENERGY SECTOR ETF	724	732	730	713	691
VPU	VANGUARD UTILITIES ETF	724	689	688	605	473
IDU	ISHARES US UTILITIES ETF	726	696	676	588	482
IBDQ	ISHR IBND DEC 2025 TRM ETF	727	706	744	660	703
BAL	BARCLAYS BK IPATH BLOOM COTN SUB ETN	728	809	815	945	794
GLTR	ETFS PHYSICAL PRECIOUS MTL BSKT ETF	728	643	747	722	793
TUTI	TUTTLE TCTCL MNGMT MLT STRGY INC ETF	730	735	737	718	686

CMF	ISHARES CALIFORNIA MUNI BOND ETF	731	734	681	686	679
TFI	SPDR NUVEEN BLMBRG BRCLY MNCP ETF	732	702	666	677	669
FREL	FIDELITY MSCI REAL ESTATE INDEX ETF	733	695	614	619	632
FCOM	FIDELITY MSCI TELECOM SERV INDX ETF	734	636	806	833	624
XLE	ENERGY SELECT SECTOR SPDR ETF	735	791	791	798	895
REET	ISHARES GLOBAL REIT ETF	736	714	663	682	690
PBJ	POWERSHARES DYN FOOD&BEVERAGE ETF	737	790	752	906	749
SEA	GUGGENHEIM SHIPPING ETF	738	905	905	925	959
DRN	DIREXION DAILY REAL EST BULL 3X ETF	739	674	477	485	567
VCIT	VANGUARD INTERMEDIATE TERM COR ETF	740	729	741	694	718
IYR	ISHARES US REAL ESTATE ETF	741	698	620	620	636
PDBC	PWRSHRS ACTVLY MNG OPTM YD DVRS ETF	741	685	808	592	768
PXMV	POWERSHARES RSSL MDCP PR VAL ETF	741	911	789	885	780
BSJL	GUGG BLTSHS 2021 HGH YLD CRP BND ETF	744	816	826	828	788
GYLD	ARROW DOW JONES GLOBAL YIELD ETF	745	938	898	846	925
SHYD	VANECK VCTRS SHT HY MNCPL INDEX ETF	745	748	732	734	682
BSCO	GUGGENHEIM BLTSHRS 2024 CRPT BND ETF	747	720	706	691	710
PLW	POWERSHARES 1 30 LADDERED TRSURY ETF	748	746	678	643	661
TLH	ISHARES 10-20 YEAR TSURY BOND ETF	749	752	708	667	699
IBDP	ISHARES IBONDS DEC 2024 TRM ETF	750	733	743	696	711
VRP	POWERSHARES VARIABLE RATE PRF ETF	751	770	758	754	641
IPU	SPDR S&P INTL UTILITIES SECTOR ETF	752	750	745	721	700
MUB	ISHARES NATIONAL MUNI BOND ETF	753	736	720	708	697
XLU	SELECT SECTOR UTI SELECT SPDR ETF	754	717	703	598	498
PGF	POWERSHARES FINANCIAL PREFERRED ETF	755	793	713	706	594
GUSH	DRXN DLY S&P OL GS EXP PRD BL 3X ETF	756	897	783	880	863
IYE	ISHARES US ENERGY ETF	757	803	786	803	897
GBF	ISHARES GOVT CREDIT BOND ETF	758	764	750	698	716
NFLT	NEWFLEET MLT SCTR UNCSTND BND ETF	759	795	790	731	721
WBII	WBI TACTICAL INCOME ETF	760	799	781	737	795
VDE	VANGUARD ENERGY ETF	761	809	794	818	908
HYS	PIMCO 0-5 YEAR HIGH YLD BND IDX ETF	762	853	837	886	827
DJP	BRCLYS BK IPATH BLOOM COMMODITY ETN	763	691	859	740	920
MUNI	PIMCO INTRMEDIATE MUNI BOND ACTV ETF	764	737	740	724	700
FENY	FIDELITY MSCI ENERGY INDX ETF	765	815	797	810	908
REM	ISHARES MORT REAL ESTATE CAP ETF	766	706	628	608	677
BSJM	GUGG BLTSHS 2022 HGH YLD CPT BND ETF	767	858	898	889	835
AGG	ISHARES CORE US AGGREGATE BOND ETF	768	765	766	732	760
PXI	PWRSHRS DWA ENERGY MNTM ETF	769	864	778	787	918
BSCN	GUGGENHEIM BLTSHRS 2023 CRPT BND ETF	770	753	754	717	733
DWAS	POWERSHARES DWA SMALLCAP MOM ETF	771	775	767	760	734
KBWB	POWERSHARES KBW BANK ETF	771	775	767	760	734
KBWD	POWERSHARES KBW HIGH DVD YLD FNL ETF	771	775	767	760	734
KBWP	PWRSHS KBW PRPRTY & CASUALTY INS ETF	771	775	767	760	734
KBWR	POWERSHARES KBW REGIONAL BANKING ETF	771	775	767	760	734
KBWY	PWRSHS KBW PREM YLD EQTY REIT ETF	771	775	767	760	734
UDF	UNITED DEVELOPMENT IV ORD	771	775	767	760	734
UWTI	VELOCITYSHARES 3X LNG CRD OIL ETN	771	775	767	760	734
BSJK	GUGGENHEIM BULLS 2020 HIGH BOND ETF	779	837	845	847	807
RYU	GUGGENHEIM S&P 500 EQUAL WEI UTI ETF	780	719	730	646	596
UST	PROSHARES ULTRA 7-10 YR TREASURY ETF	781	749	692	626	687
BND	VANGUARD TOTAL BOND MARKET ETF	782	769	764	729	757
DJCI	E-TRACS LINKED TO THE BLM COM ETN	783	693	875	748	885
SCHZ	SCHWAB US AGGREGATE BOND ETF	783	785	761	739	750
IBDO	ISHARES IBONDS DEC 2023 TERM ETF	785	756	767	734	767
PUI	PWRSHRS DWA UTILITIES MNTM ETF	786	731	718	658	491
TPYP	TORTOISE NORTH AMERICAN PIPELINE ETF	787	855	830	804	811
PFIG	PWRSHS FUND INV GRD CRP BND ETF	788	773	779	759	727
FBND	FIDELITY TOTAL BOND ETF	789	806	756	757	784
DBP	POWERSHARES DB PRECIOUS METALS ETF	790	668	763	757	801
IBDF	ISHARES IBONDS DEC 2016 TRM ETF	791	795	787	779	753
IBDN	ISHARES IBONDS DEC 2022 TERM ETF	792	787	792	774	781

SCHH	CHARLES SCHWAB US REIT ETF	793	755	670	674	704
BIV	VANGUARD INTERMEDIATE TERM BOND ETF	794	766	758	728	761
BOND	PIMCO TOTAL RETURN ACTIVE ETF	795	791	746	741	758
FTGC	FIRST TRUST GBL TTCL COMDTY STRA ETF	796	730	884	725	893
SOYB	TEUCRIUM SOYBEAN ETF	796	767	869	884	908
BZF	WISDOMTREE BRAZILIAN REAL STR ETF	798	774	661	829	821
VBND	VIDENT CORE US BOND STRATEGY ETF	799	787	776	692	754
BSCM	GUGGENHEIM BULLET 2022 COR BOND ETF	800	758	788	753	759
EMLP	FIRST TRUST NORTH AMERICAN ENER ETF	800	949	941	871	938
PGX	POWERSHARES PREFERRED PORTFOLIO ETF	802	804	728	714	603
CMBS	ISHARES CMBS ETF	803	822	795	781	797
ENY	GUGGENHEIM CANADIAN ENGY INCOME ETF	804	929	841	887	941
MLPX	GLOBAL X MLP ENERGY INFRASTRUCT ETF	805	933	937	923	965
PSK	SPDR WELLS FARGO PREFERRED STOCK ETF	806	768	748	730	626
HYLS	FIRST TRUST TACTICAL HIGH YIELD ETF	807	875	861	838	835
RYE	GUGGENHEIM S&P 500 EQUAL WEI ENG ETF	808	866	830	932	949
JJE	BARCLAYS BNK IPATH BLOOM ENERGY ETN	809	826	934	789	769
BNDX	VANGUARD TOTAL INTERNATIONAL BND ETF	810	827	725	690	672
XOP	SPDR S&P OIL & GAS EXPL & PROD ETF	811	869	812	861	911
GOVT	ISHARES US TREASURY BOND ETF	812	806	782	743	765
ICF	ISHARES COHEN AND STEERS REIT ETF	812	770	679	678	708
EMB	ISHARES JPMORGAN USD MTS BOND ETF	814	824	809	802	776
SMHD	UBS ETRCS MNLY PY 2XLVGD US SML ETN	815	798	960	997	873
DIVY	REALITY SHARES DIVS ETF	816	927	807	807	916
BSJJ	GUGGENHEIM BULLS 2019 HIGH BOND ETF	817	851	864	852	805
RIGS	RIVERFRONT STRATEGIC INCOME ETF	817	898	823	789	800
HDLV	UBS ETRACS PAY 2X US HG DIV LOW ETN	819	893	850	868	779
PST	PROSHARES ULTRASHORT LEHMAN 7-10 ETF	820	877	886	907	797
SST	SPDR BLMBRG BRCLY SHT TRM TRS ETF	821	831	814	813	786
GYEN	ADVISORSHARES GARTMAN GOLD YEN ETF	822	842	809	808	782
IBDM	ISHARES IBONDS DEC 2021 TERM ETF	822	806	799	778	799
BSJG	GUGGENHEIM BULLETSHARES 2016 ETF	824	838	812	814	789
GNMA	ISHARES GNMA BOND ETF	824	862	800	786	814
PFF	ISHARES U.S. PREFERRED STOCK ETF	826	836	820	812	785
BSCL	GUGGENHEIM BULLET 2021 COR BOND ETF	827	805	798	793	778
VMBS	VANGUARD MORTGAGE BACKED SEC ETF	828	833	803	772	774
HYEM	VNECK VCTR EMRG MKT HG YLD BOND ETF	829	835	840	863	832
MDIV	FT MULTI ASSET DIVERSIF INC IDX ETF	830	916	900	902	913
SCPB	SPDR BLMBRG BARCLY SHT TRM CP ETF	831	854	832	826	810
RWR	SPDR DOW JONES REIT ETF	832	787	709	710	744
FRI	FIRST TRUST S&P REIT INDEX ETF	833	786	695	693	709
SJNK	SPDR BLMBRG BRCLY SHT TRM HGH ETF	834	907	927	937	919
AGZ	ISHARES AGENCY BOND ETF	835	811	818	783	792
FXV	GUGGENHEIM CURRENCY JAPANESE YEN ETF	836	813	796	776	786
RING	ISHARES MSCI GLO GOLD MINERS ETF	837	856	835	820	796
SHYG	ISHARES HIGH YIELD CORPORAT BOND ETF	838	885	924	930	905
GVI	ISHARES INT GOV CREDIT BOND ETF	839	840	828	794	805
IBDL	ISHARES IBONDS DEC 2020 TRM ETF	840	848	829	819	816
VGIT	VANGUARD INTERMEDIATE TERM GOV ETF	841	840	801	777	791
TOTL	SPDR DOUBLELINE TTL RTRN TTCL ETF	842	827	833	805	802
XES	SPDR S&P OIL & GAS EQUIP & SERVS ETF	843	980	952	964	989
SCHR	SCHWAB INTERMEDIATE TERM US TRS ETF	844	832	801	774	790
PBP	POWERSHARES S&P 500 BUYWRITE ETF	845	880	711	665	636
FLTR	VANCK VCTRS INVST GRD FLOTNG ETF	846	861	856	837	837
PPLT	ETFS PHYSICAL PLATINUM SHARES ETF	847	884	865	912	932
VNQ	VANGUARD REIT ETF	848	812	713	703	725
FLTB	FIDELITY LIMITED TERM BOND ETF	849	866	815	829	824
BSCG	GUGGENHEIM BLSHS 2016 CORP BND ETF	850	873	848	842	829
BSCH	GUGGENHEIM BLSHS 2017 CORP BND ETF	851	865	851	843	834
PFXF	VANCK VECTR PRF SECR EX FNCL ETF	852	845	833	821	730
SGDM	SPROTT GOLD MINERS ETF	852	617	736	736	851
BSJH	GUGGENHEIM BULLETSHARES 2017 ETF	854	874	857	849	829

## The Lyons Share

SCHP	SCHWAB US TIPS ETF	855	830	842	770	811
MLPS	UBS ETRACS LKD TO ALERIAN MLP ETN	856	683	854	797	773
BSCK	GUGGENHEIM BULTSH 2020 CORP BOND ETF	857	846	839	815	815
CRED	ISHARES US CREDIT BOND ETF	858	877	851	847	819
GCC	WISDOMTREE CONTNUOUS CMODTY INDX ETV	859	802	933	895	934
VCSH	VANGUARD SHORT TERM COR BD ETF	860	860	849	829	840
IBDH	ISHARES IBONDS DEC 2018 TRM ETF	861	880	874	882	859
SRLN	SPDR BLACKSTONE GSO SENIOR LOAN ETF	862	889	920	932	900
FLOT	ISHARES FLOATING RATE BOND ETF	863	876	884	864	855
ITE	SPDR BLMBRG BRCLY INTRMDT TM ETF	864	857	838	811	803
FLRN	SPDR BLMBRG BRCLY INV GR FLTN ETF	865	879	890	857	852
MBG	SPDR BLMBRG BRCLY MRTG BKD BD ETF	865	902	842	808	826
GDX	VANECK VECTORS GOLD MINERS ETF	867	673	710	782	843
FTSM	FIRST TRUST ENHANCED SHORT MTRTY ETF	868	902	878	855	849
IBCC	ISHR IBND MAR 2018 TRM EX FNNCL ETF	869	896	872	871	867
IBDC	ISHARES IBONDS MAR 2020 TERM ETF	869	851	851	839	841
IBDK	ISHARES IBONDS DEC 2019 TERM ETF	869	872	883	864	844
MINT	PIMCO ENHANCED SHRT MATURTY ACTV ETF	869	880	868	870	853
PVI	POWERSHARES VRDO TAX FREE WEEKLY ETF	869	895	873	859	847
HYMB	SPDR NUVEEN S&P HIGH YIELD MUNI ETF	874	863	819	822	822
ROOF	IQ US REAL ESTATE SMALL CAP ETF	874	819	694	750	764
TIPZ	PIMCO BROAD US TIPS INDEX ETF	876	801	858	771	820
BIL	SPDR BLMBRG BRCLY 1 3 MNTH T ETF	877	887	880	877	863
SMB	VANCK VCTR AMT FREE MCPL INDX ETF	877	887	846	824	817
BTAL	QUANTSHARES US MARKET NEUTRAL AN ETF	879	844	824	745	766
GSY	GUGGENHEIM SHORT DURATION ETF	880	890	862	857	838
TIP	ISHARES TIPS BOND ETF	880	850	895	801	845
IBMI	ISHARS IBND SEP 2020 TRM MUN BND ETF	882	866	863	850	829
HVPW	US EQY HIGH VOLATILITY PW IND ETF	883	901	881	875	847
DBA	POWERSHARES DB AGRICULTURE ETF	884	936	954	929	933
REZ	ISHARES RESI REAL ESTATE CAP ETF	884	814	738	727	667
NEAR	ISHARES SHORT MATURITY BOND ETF	886	890	895	890	871
GASL	DIR DAILY NAT GAS REL BUL 3X ETF	887	943	930	956	944
MINC	ADVISORSHARES NEWFLET MUL SEC ETF	887	905	836	881	838
FTSL	FIRST TRUST SENIOR LOAN ETF	889	944	928	926	926
PSAU	PWRSHS GLOBAL GOLD & PREC MET ETF	889	676	734	780	854
BSCJ	GUGGENHEIM BULTSH 2019 CORP BOND ETF	891	898	877	873	863
IBCD	ISHRS IBND MAR 2020 TRM EX FNNCL ETF	891	859	860	868	833
SHM	SPDR NVN BLMBRG BRCLY SHT TM ETF	891	900	865	853	845
SHV	ISHARES SHORT TREASURY BOND ETF	894	912	888	897	879
ULST	SPDR SSGA ULTRA SHORT TERM BOND ETF	894	880	887	859	876
RJA	AB SVNK ELEMENTS LKD RGR INDX AGR	896	934	948	945	950
IBMF	ISHRS IBND SEP 2017 TRM MN BND ETF	897	915	892	892	877
BSV	VANGUARD SHORT-TERM BOND ETF	898	886	865	854	850
IBDJ	ISHARES IBONDS DEC 2017 TERM ETF	898	913	894	899	883
RRF	WISDOMTREE GLOBAL REAL RETURN ETF	898	908	888	883	855
SUB	ISHARES SHORT TERM NTNL MUN BND ETF	901	904	878	867	863
BSJI	GUGGENHEIM BULLESHARES 2018 ETF	902	921	912	921	890
IBDB	ISHARES IBONDS MAR 2018 TRM ETF	903	928	882	913	880
CSJ	ISHARES 1-3 YEAR CREDIT BOND ETF	904	922	897	898	881
IBMG	ISHARS IBND SEP 2018 TRM MUN BND ETF	905	890	916	879	896
AMLP	ALPS ALERIAN MLP ETF	906	991	987	974	989
ISTB	ISHARES CORE 1 5 YEAR USD BOND ETF	907	917	893	892	875
CHAD	DIREXION DLY CSI 300 CHN A BR 1X ETF	908	909	902	891	868
FRAK	VANECK VCTR UNCNVNTNL OIL GAS ETF	908	934	926	961	962
CIU	ISHARES INTERM CREDIT BOND ETF	910	917	891	896	857
IPE	SPDR BLOOMBERG BARCLAYS TIPS ETF	911	869	904	799	858
BSCI	GUGGENHEIM BULTSH 2018 CORP BOND ETF	912	923	908	909	886
GEUR	ADVISORSHARES GARTMAN GOLD EURO ETF	912	920	914	903	886
ASFI	ASTA FUNDING ORD	914	783	803	980	962
NIB	BARCLAYS BANK IPATH BLOOM COCOA ETN	914	893	941	888	726
BKLN	POWERSHARES SENIOR LOAN ETF	916	913	923	935	905



## The Lyons Share

WEAT	TEUCRIUM WHEAT ETF	917	951	951	932	943
IBMH	ISHRS IBND SEP 2019 TRM MUN BND ETF	918	909	901	862	860
TUZ	PIMCO 1-3 YEAR US TREASURY ETF	918	926	910	904	893
DAG	DB AGRICULTURE DOUBLE LONG ETN	920	966	972	967	980
GDXX	PROSHARES ULTRA GOLD MINERS ETF	920	596	682	841	924
JJG	BARCLAYS BK IPATH BLOOM GRAINS ETN	922	948	947	947	947
IEI	ISHARES 3-7 YEAR TRERY BOND ETF	923	942	922	920	904
VOX	VANGUARD TELECOMMUNICATION SERVC ETF	924	759	943	968	898
SHY	ISHARES 1-3 YEAR TREASURY BOND ETF	925	938	916	918	903
SCHO	SCHWAB SHORT TERM US TREASURY ETF	926	931	910	908	900
VGSH	VANGUARD SHORT TERM GOVERNMENT ETF	927	925	908	901	900
IUSB	ISHARES TOTAL USD BOND MARKET ETF	928	937	919	922	898
TDTF	FLEXSHARES IBOXX 5 YR TIPS IDX ETF	929	917	929	876	914
LMBS	FRST TRT LOW DRTN OPPRNTS ETF	930	947	912	850	889
PSCE	POWERSHARES S&P SMALLCA ENG PORT ETF	931	971	964	949	977
PXJ	POWERSHARES DYNM OIL SRVCS PRNFL ETF	932	980	971	980	987
CORN	TEUCRIUM CORN ETF	933	958	945	950	935
IEZ	ISHARES US OIL EQUIP SER ETF	934	993	970	983	996
SGDJ	SPROTT JUNIOR GOLD MINERS ETF	934	672	684	834	921
VTIP	VANGUARD SHRT INF PROT SEC INDEX ETF	934	941	876	835	827
MLPA	GLOBAL X MLP ETF	937	986	994	976	992
TIPX	SPDR BLMBRG BRCLY 1 10 YR TIP ETF	938	923	930	873	882
FXU	FIRST TRUST UTILITIES ALPHADEX ETF	939	930	939	910	808
WDTI	WISDOMTREE MANAGED FUTURES STRAT ETF	940	944	930	930	923
SLVP	ISHARES MSCI GLOBAL SILR MIN ETF	941	754	870	878	929
SIVR	ETFS SILVER TRUST ETF	942	817	907	905	946
ZMLP	DIREXION ZACKS MLP GHG INCM SHS ETF	943	972	968	959	969
SLV	ISHARES SILVER TRUST ETF	944	817	915	911	944
FTSD	FRANKLIN LBRTY SHRT DUR US GVRN ETF	945	940	934	918	929
IEF	ISHARES 7-10 YEAR TRSURY BOND ETF	946	954	937	942	921
SPFF	GLOBAL X SUPERINCOME PREFERRED ETF	946	954	944	952	927
URA	GLOBAL X URANIUM ETF	946	743	564	788	861
PSLV	SPROTT PHYSICAL SILVER CF	949	869	916	915	941
ATMP	BARCLAYS SELECT MLP ETN	950	975	982	968	983
DBS	POWERSHARES DB SILVER ETF	951	834	925	928	948
GDXJ	VANECK VECTOR JUNR GOLD MNRS ETF	951	739	811	913	937
STPZ	PIMCO 1-5 YEAR US TIPS INDEX ETF	953	954	950	937	928
USDU	WISDOMTREE BLOMBRG US DOL BUL ETF	953	952	936	924	886
SCO	PROSHARES ULTRST BLOM CRUDE ETF	955	957	871	829	762
STIP	ISHARES 0-5 YEAR TIPS BOND ETF	955	953	948	936	931
OIH	VANECK VECTORS OIL SERVICES ETF	957	996	973	978	995
RINF	PROSHARES INFLATION EXPECTATIONS ETF	958	838	963	940	891
NUGT	DRXN DLY GLD MNS INX BL 3X ETF	959	602	762	926	958
SIL	GLOBAL X SILVER MINERS ETF	960	784	903	894	940
TDTT	FLEXSHARES IBOXX 3 YR TIPS IDX ETF	960	959	955	943	936
MLPC	CITI C TRACKS MILLER HOWARD MLP ETN	962	973	977	953	981
DVHL	UBS ETRACS PAY 2XLV DIV HIGH INC ETN	963	977	976	982	956
PGHY	POWERSHS GLOB SHORT TERM HY BOND ETF	964	962	959	950	951
IMLP	BARCLAYS IPATH SP MLP ETN	965	979	974	954	976
MBB	ISHARES MBS ETF	966	966	958	954	951
OHAI	OHA INVESTMENT ORD	967	964	957	900	953
AGQ	PROSHARES ULTRA SILVER ETF	968	848	952	948	964
RUSS	DIREXION DAILY RUSSIA BR 3X SHS ETF	969	962	921	944	914
BZQ	PROSHARES ULTRSHRT MSCI BRZL CPD ETF	970	969	962	957	905
AMU	UBS ETRACS ALERIAN MLP INDEX ETN	971	984	982	975	991
TTT	PROSHARES ULTPRO SH 20 YR TSRY ETF	972	961	978	989	938
USLV	CS VELOCITYSHARES 3X LONG SILVER ETN	973	829	967	962	973
IYZ	ISHARES US TELECOM ETF	974	847	961	987	956
ARCC	ARES CAPITAL ORD	975	949	969	970	961
AMJ	JP MORGAN CHASE ALERIAN ETN	976	985	984	977	986
SLVO	CREDIT SUISSE X LNK SLVR CVR CAL ETN	976	946	956	957	970
SILJ	ETF MANG PUREFUNDS ISE JUNIR SIL ETF	978	762	905	937	965

## The Lyons Share

DBV	POWERSHARES DB G10 CURR HARVEST ETF	979	973	945	960	972
JNUG	DIREXION DILY JR GOLD MIN BUL 3X ETF	980	692	940	972	979
YMLI	VANCK VCTR HG INCM INFRST MLP ETF	981	989	988	964	987
UUP	POWERSHRS DB US DLR INDX BULLISH ETF	982	976	966	963	954
MLPI	UBS E TRACS ALERIAN MLP INFRASTR ETN	983	997	995	988	978
STPP	BARCLAYS BK IPATH US TREAS STEEP ETN	984	965	965	971	960
JO	BARCLAYS BK IPATH BLOOM COFFEE ETN	985	987	989	985	983
BIZD	VANECK VECTORS BDC INCOME ETF	986	983	979	990	971
SGG	BARCLAYS BK IPATH BLOOM SUGAR RT ETN	987	968	997	1000	999
BDCS	UBS E TRACS LKD WLS FRG DEV ETN	988	978	985	993	911
AMZA	INFRACAP MLP ETF	989	994	993	985	994
QAT	ISHARES MSCI QATAR CAPPED ETF	990	980	992	995	1000
UNL	UNITED STATES 12 MT NATURAL GAS ETF	991	960	975	966	968
FXP	PROSHARES ULTRASH FTSE CHINA 50 ETF	992	992	980	984	967
BDCL	UBS LEV LNG SEC LKD WF BUS DEV ETN	993	1000	998	999	955
YANG	DIREXION DLY FTSE CHNA BER 3X ETF	994	998	985	992	975
GAZ	BARCLYS BK IPATH BLOOM NATL GAS ETN	995	999	996	997	993
UNG	UNITED STATES NATURAL GAS ETF	996	970	989	979	985
TICC	TICC CAPITAL ORD	997	932	981	973	974
TECS	DIREXION DAILY TECHNOLOGY BER 3X ETF	998	988	991	991	982
BOIL	PROSHARES ULTRA BLOM NAT GAS ETF	999	990	999	994	997
UGAZ	VELOCITYSHARES 3X LNG NTRL GS ETN	1000	995	1000	996	998

### Disclaimer

#### Important Consumer Disclosure

The Lyons Share's web site is limited to the dissemination of general investment-related information together with possible access to additional publications and links. Accordingly, the publication of The Lyons Share's web site on the Internet should not be construed by any prospective or existing subscriber as a solicitation to effect, or attempt to effect transactions in securities, or the rendering of personalized investment advice for compensation over the Internet.

Subscribers are solely responsible for choosing investments for their accounts based on their own risk tolerance and general circumstances. The Lyons Share does not make any representations or warranties as to the accuracy, timeliness, suitability, completeness, or relevance of any information prepared by any unaffiliated third party, whether linked to The Lyons Share's web site or incorporated herein, and takes no responsibility therefor. All such information is provided solely for convenience purposes only and all users thereof should be guided accordingly.

Past performance may not be indicative of future results. Therefore, no prospective or existing subscriber should assume that future performance of any specific investment or investment strategy, including the investments and/or investment strategies made reference to directly or indirectly by The Lyons Share on its web site, or indirectly via a link to an unaffiliated third party web site, will be profitable or equal any historical performance level(s).

Please remember that different types of investments involve varying degrees of risk, and there can be no assurance that any specific investment will be suitable for a prospective or existing subscriber's investment portfolio.

Historical performance results for investment indices and/or categories generally do not reflect the deduction of transaction and/or custodial charges, the deduction of an investment management fee, nor the impact of taxes, the incurrence of which would have the effect of decreasing historical performance results.

Certain portions of The Lyons Share's web site (i.e. videos, posts, commentaries, etc.) may contain a discussion of, and/or provide access to, positions and/or recommendations as of a specific prior date. Due to various factors, including changing market conditions, such discussion may no longer be reflective of current position(s) and/or recommendation(s). Moreover, no prospective or existing subscriber should assume that any such discussion serves as the receipt of, or a substitute for, personalized advice from an investment professional.

The Lyons Share is neither an attorney nor an accountant, and no portion of the web site content should be interpreted as legal, accounting or tax advice.

The Lyons Share does not make any representations or warranties as to the accuracy, timeliness, suitability, completeness or relevance of any information prepared by any unaffiliated third party, whether linked to The Lyons Share's web site or incorporated herein, and takes no responsibility therefore. All such information is provided solely for convenience purposes only and all users thereof should be guided accordingly.

Each prospective or existing subscriber agrees, as a condition precedent to his/her/its access to The Lyons Share's web site, to release and hold harmless The Lyons Share, its officers, directors, owners, employees and agents from any and all adverse consequences resulting from any of his/her/its actions and/or omissions which are independent of his/her/its receipt of access to The Lyons Share.